

Highly Improved. Fantastic Amenities. Excellent Location.



# MIZNER PLACE

Premier Destination for  
Wellington Professionals

OFFICE | MEDICAL | RETAIL

**Jason L. Sundook, SIOR**  
561 471 8000 | [www.mhcreal.com](http://www.mhcreal.com)

±1,098-1,391 SF  
Class-A Office/Retail Space  
in the heart of Wellington



# MIZNER PLACE

12300 South Shore Boulevard, Wellington, Florida 33414

## Property Features

- Highly improved and well-maintained building
- Building signage, improvement allowance and covered parking available
- Located in the Equestrian Capital of the World, with a mecca of equestrian programs, activities and events
- In the heart of Wellington, adjacent to Palm Beach Polo, and minutes from the Florida Turnpike, US-441, the Mall at Wellington Green, and more

For more information:

**Jason L. Sundook, SIOR**  
Principal | [jsundook@mhcreal.com](mailto:jsundook@mhcreal.com)

## Key Features:



Office, medical and retail space



Approved for medical use



Multiple signage opportunities



New On-site Restaurant



Equestrian community

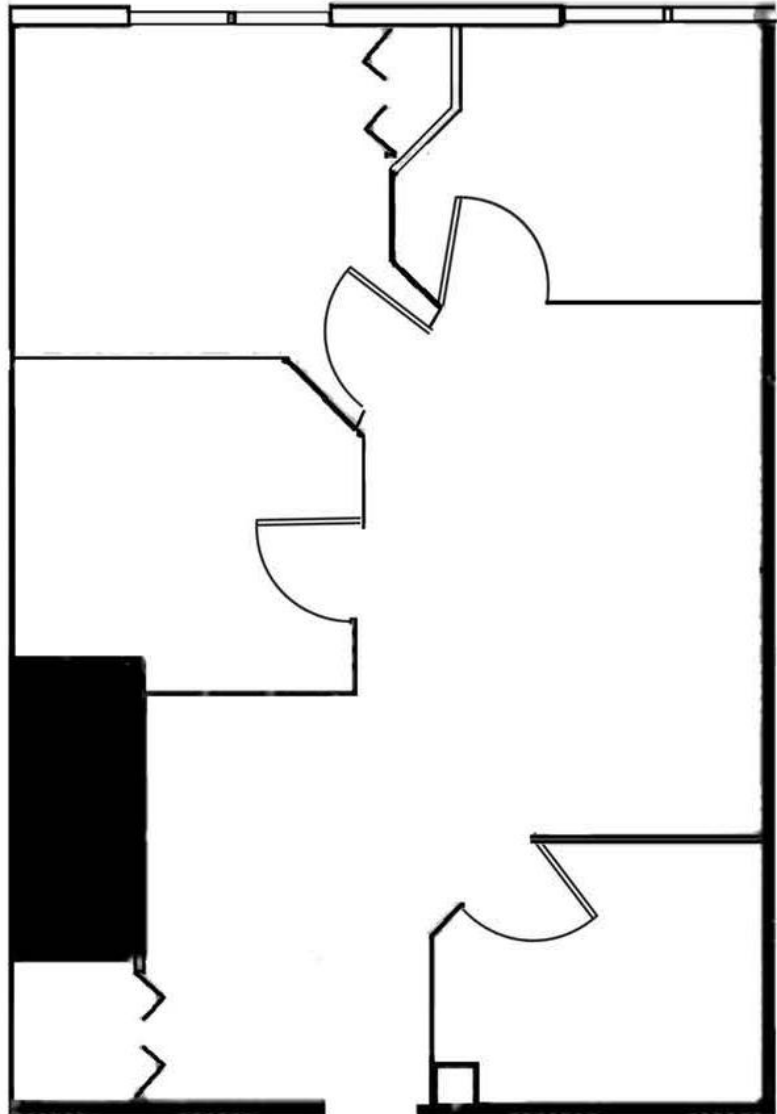


**FOR LEASE: MIZNER PLACE**

## LOCATED IN THE HEART OF WELLINGTON

### Suite 216 ±1,098 SF

- Second-floor office
- Mix of offices and open area space



\*Not to scale. Subject to error.

**LET'S SCHEDULE YOUR TOUR TODAY!**

 **561 471 8000**