

# FOR LEASE | INDUSTRIAL SPACE

19 Bartlett Road | Gorham, ME

PRICE REDUCTION



## 16,600± SF INDUSTRIAL SPACE

- Located in the Gorham Industrial Park
- One drive in door and two loading docks
- Includes office space
- Ample on-site parking along the side of the building

**LEASE RATE: \$10.00/SF NNN**



**JOE MALONE, CCIM**  
207.773.2554 D  
207.233.8000 C  
[joe@malonecb.com](mailto:joe@malonecb.com)



**LUKE MALONE**  
207.358.0475 D  
207.939.0155 C  
[luke@malonecb.com](mailto:luke@malonecb.com)

**MALONE COMMERCIAL BROKERS**  
5 Moulton Street • Suite 3  
Portland, ME 04101  
207.772.2422 • [malonecb.com](http://malonecb.com)



# PROPERTY SUMMARY

19 Bartlett Road | Gorham, ME



**OWNER:** MTB Properties LLC

**DEED:** Book 40585, Page 53

**ASSESSOR:** Map 12, Lot 24

**LOT SIZE:** 4.5± AC

**AVAILABLE SPACE:** 16,600± SF

**BUILDING SIZE:** 33,308± SF

**YEAR BUILT:** 1973

**CONSTRUCTION:** Steel frame

**ROOF:** Metal

**SIDING:** Pre-finished metal

**CEILING HEIGHT:** 16-19'±

**ELECTRICITY:** 3 phase

**LOADING:** One drive in door & two loading docks

**HVAC:** Gas

**UTILITIES:** Municipal water & sewer

**RESTROOM:** In common

**SPRINKLER:** Wet system

**SIGNAGE:** Pylon at street

**PARKING:** Ample on-site

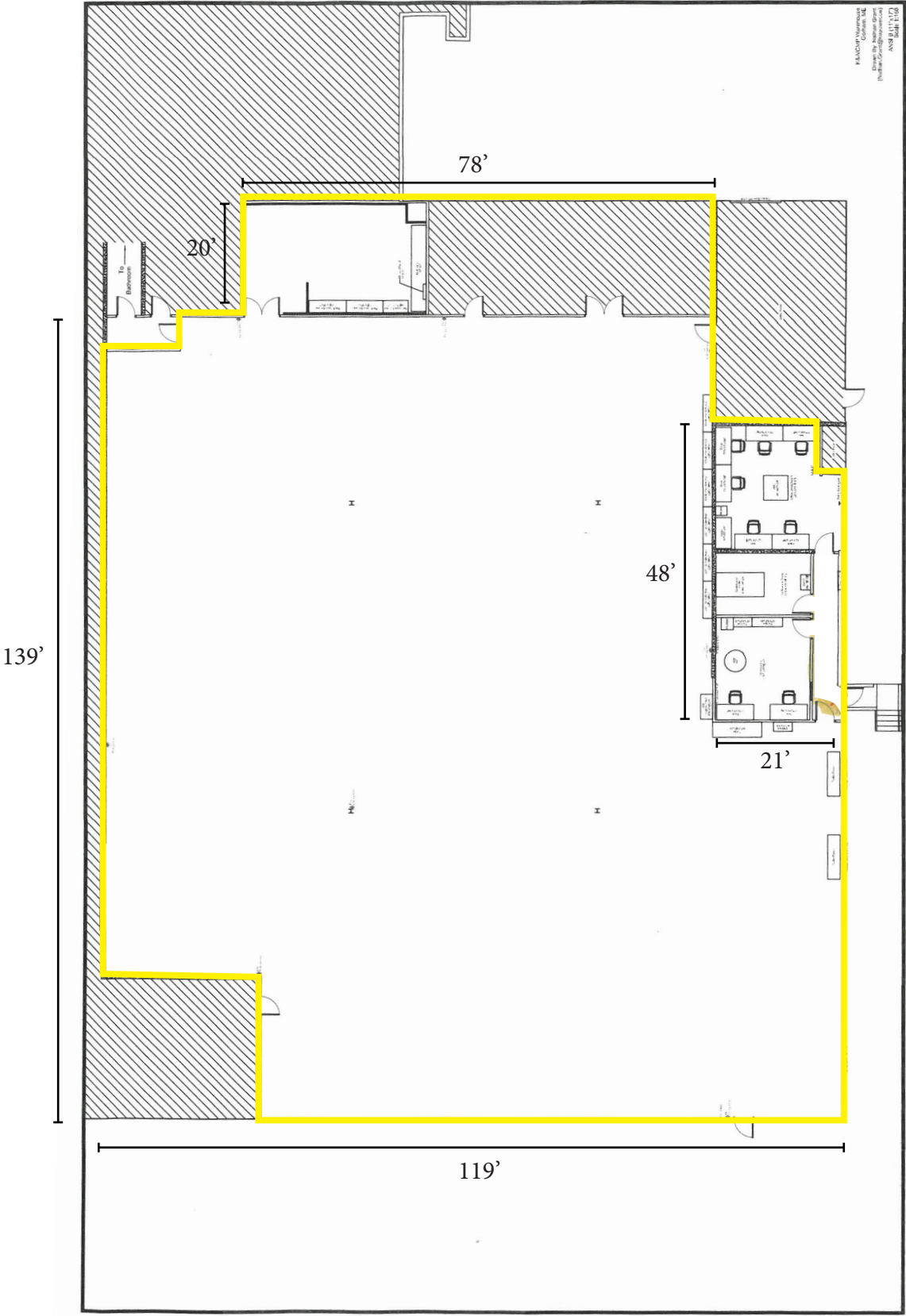
**ZONING:** I - Industrial

**LEASE RATE:** \$10.00/SF NNN



# FLOOR PLAN

19 Bartlett Road | Gorham, ME





# FOR LEASE | INDUSTRIAL SPACE

19 Bartlett Road | Gorham, ME



This document has been prepared by Malone Commercial Brokers for advertising and general information only. Malone Commercial Brokers makes no guarantees, representations or warranties of any kind, expressed or implied, regarding, but not limited to, warranties of content, accuracy, and reliability. Any interested party should undertake their own inquiries as to the accuracy of the information. Malone Commercial Brokers excludes unequivocally all informed or implied terms, conditions and warranties arising out of this document and excludes all liability for loss and damages there from. All data is subject to change of price, error, omissions, other conditions or withdrawal without notice. Malone Commercial Brokers is acting as the Seller's/Lessor's agent in the marketing of this property.



**JOE MALONE, CCIM**

207.773.2554 D

207.233.8000 C

[joe@malonecb.com](mailto:joe@malonecb.com)



**LUKE MALONE**

207.358.0475 D

207.939.0155 C

[luke@malonecb.com](mailto:luke@malonecb.com)

**MALONE COMMERCIAL BROKERS**

5 Moulton Street • Suite 3

Portland, ME 04101

207.772.2422 • [malonecb.com](http://malonecb.com)