



Land For Sale

Cherry Hill Rd

**SITE**

INTERSTATE  
**80**



Briggs St

New Lenox Rd

New Lenox Rd

W Haven Ave

W Haven Ave

NAVISTAR

HICKORY FARMS

**Truck Route**

S Briggs St

# INDUSTRIAL LAND I-80 FRONTAGE

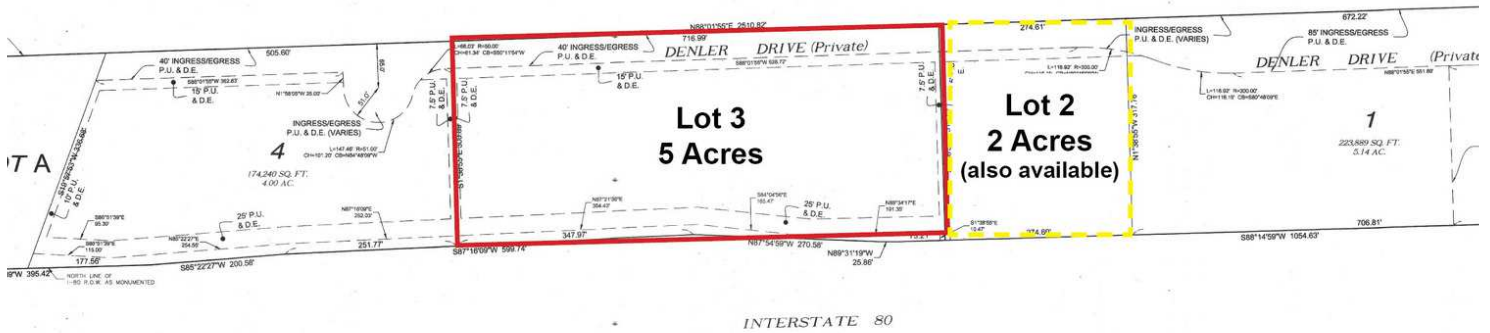
LOT 3 CHERRY HILL , JOLIET, IL 60433



INDUSTRIAL LAND I-80 FRONTAGE

RECORDING PLAT  
OF  
DENLER SUBDIVISION

R2022054110  
KAREN A. STANLEY  
WILL COUNTY RECORDS  
RECORDED ON:  
02/15/2022 09:27:06.1  
500.000.00.00  
ILLINOIS STATE BOARD OF  
REALTORS  
LSM



EASEMENT PROVISIONS  
An easement for serving the subdivision and other property with electric and communication service is hereby reserved for and granted to:  
DRAINAGE EASEMENT AND COVENANT PROVISIONS

OFFERING SUMMARY

Sale Price: \$1,540,000

Lot Size: 5.0 Acres

County: Will

Taxes (2023): 1,749.97

PROPERTY HIGHLIGHTS

- Truck businesses allowed
- Frontage on I-80 with visibility
- Private entrance on Cherry Hill Rd will be provided and paved
- Detention will be provided off-site
- All lots are 100% buildable
- Unincorporated Will County, well and septic
- Gas and electric nearby

LOCATION OVERVIEW

Prime location at the NEC of Cherry Hill and I-80, approximately 1.5 miles to I-80 interchange at Briggs St. Minutes from full I-80/I-355 interchange.