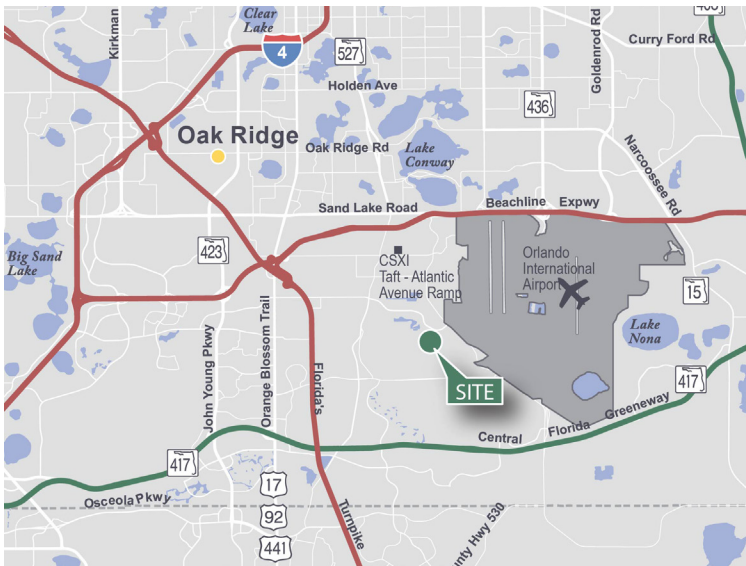


# 44,470 SF

**2487 Tradeport Drive, Suite 200**  
**Orlando, FL 32824**

Prologis Park at AIPO



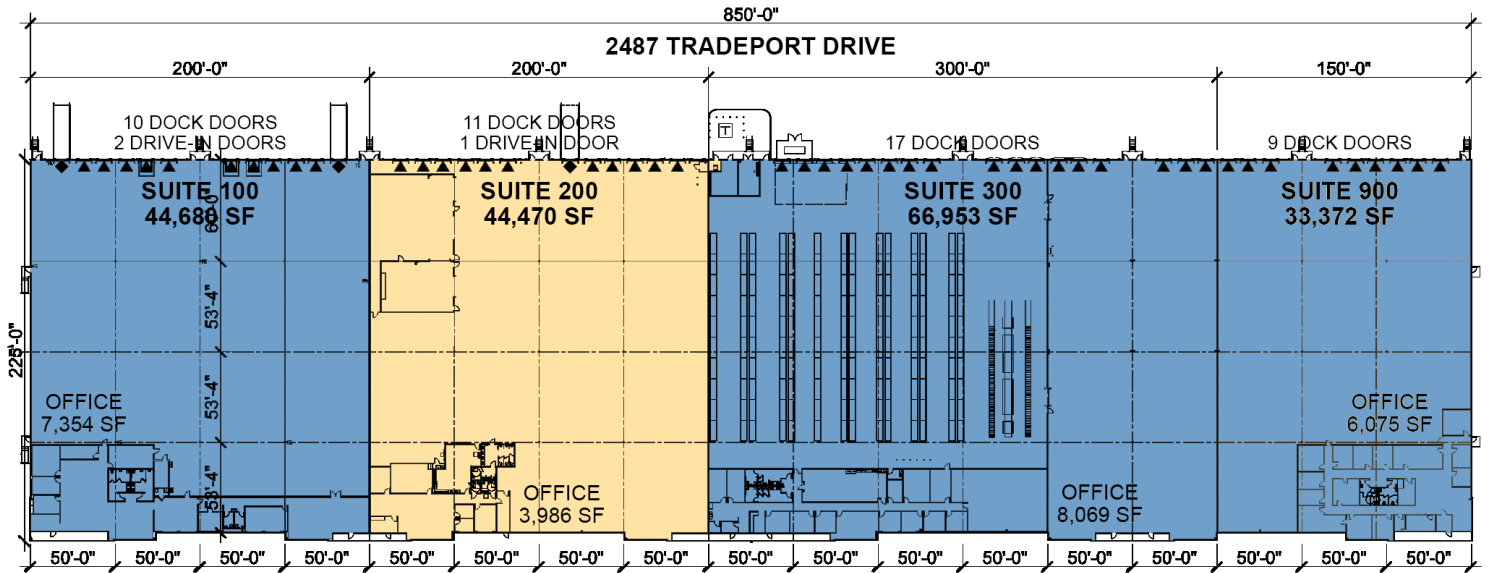
- South of the Beachline Expressway (SR 528) and adjacent to Orlando International Airport.
- Excellent access to Sand Lake Road, S. Orange Avenue and Orange Blossom Trail (US 441).
- Approved Foreign Trade Zone.
- Access to Port Tampa Bay via Interstate 4 (I-4).

## Property Features

|                    |                 |
|--------------------|-----------------|
| Available Space    | 44,470 SF       |
| Office SF          | 3,986 SF        |
| Clear Height       | 28'             |
| Column Spacing     | 53' - 60' x 50' |
| Speed Bay          | 60'             |
| Dock Doors         | 11              |
| Drive-In Door      | 1               |
| Truck Court        | 165'            |
| Car Parking Spaces | 193             |
| Lighting           | LED             |
| Sprinkler System   | ESFR            |



Unlock the full potential of your warehouse with one strategic, single-source partner.



LEGEND

- AVAILABLE
- LEASED
- DOCK DOOR
- DRIVE-IN DOOR



AIPO  
Paul Sabga  
psabga@aipo.net  
ph +1 407 927 3981

Prologis  
John Kruszewski  
jkruszewski@prologis.com  
ph +1 407 244 7109

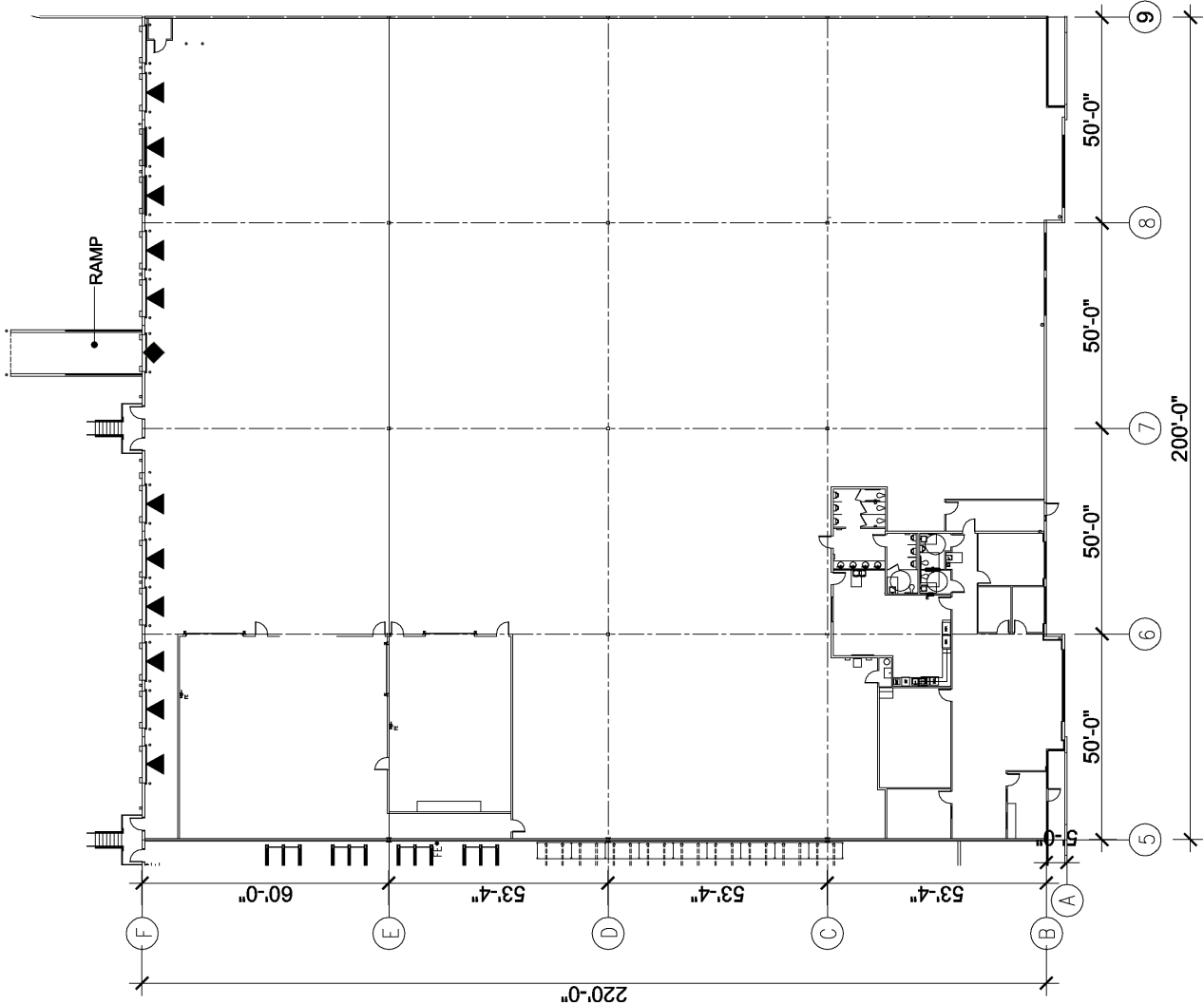
PROLOGIS  
PARK AT AIPO  
BUILDING

2487 Tradeport Drive, Suite 200  
Orlando, FL 32824

|                |           |
|----------------|-----------|
| Total:         | 44,470 SF |
| Office:        | 3,986 SF  |
| Warehouse:     | 40,484 SF |
| Dock Doors:    | 11        |
| Drive-in Door: | 1         |

LEGEND

- ▲ Dock Position
- ◆ Drive-In Door





Unlock the full potential of your warehouse with one strategic, single-source partner.



**AIPO**  
**Paul Sabga**  
psabga@aipo.net  
ph +1 407 927 3981

**Prologis**  
**John Kruszewski**  
jkruszewski@prologis.com  
ph +1 407 244 7109

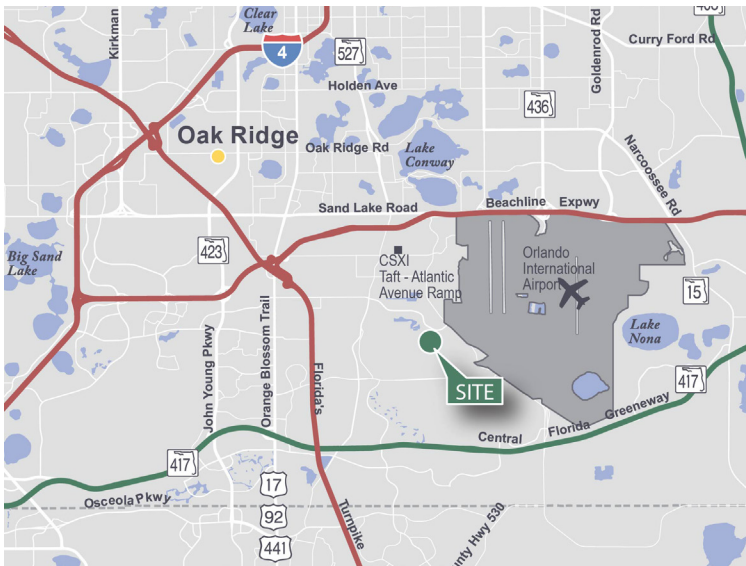
INDUSTRIAL SPACE FOR LEASE

33,372 SF



2487 Tradeport Drive, Suite 900  
Orlando, FL 32824

Prologis Park at AIPO



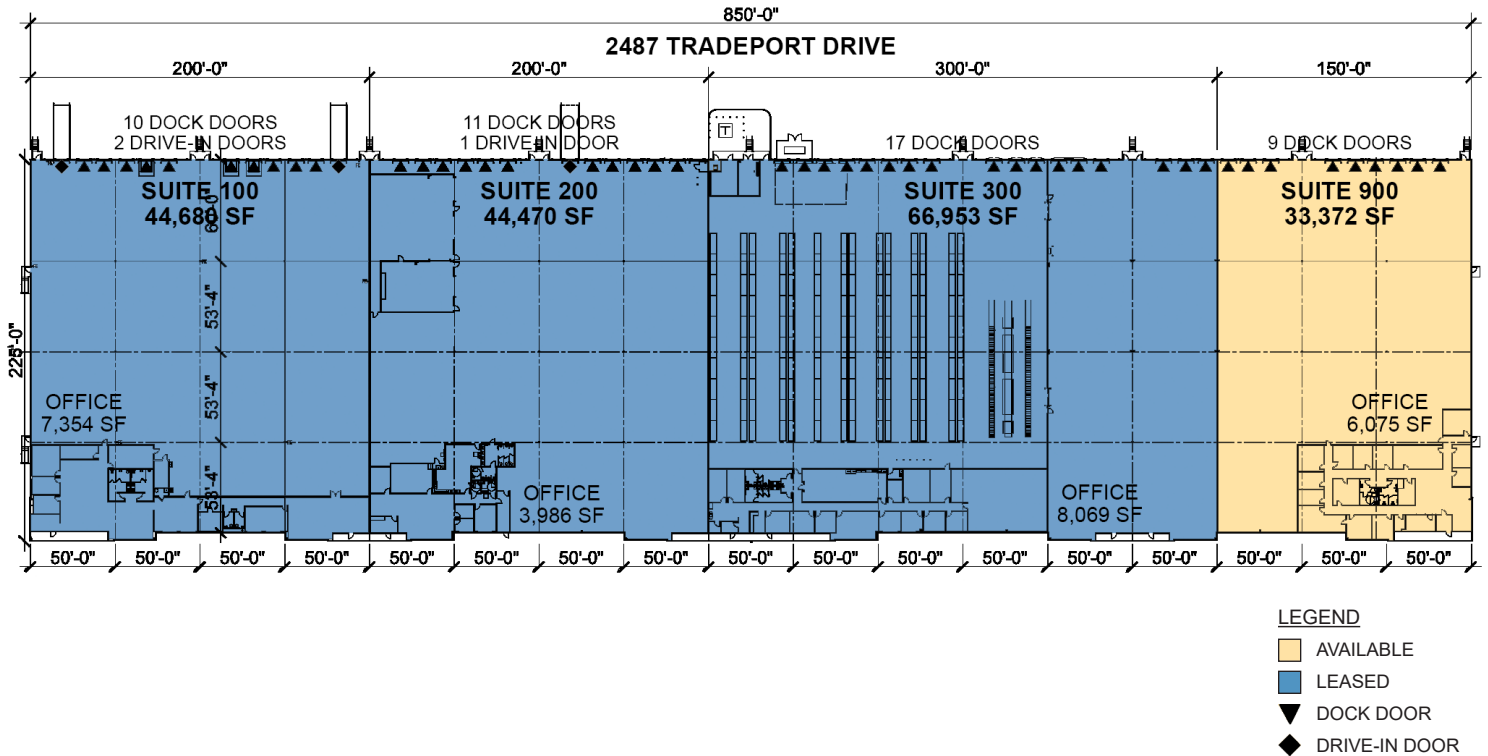
- South of the Beachline Expressway (SR 528) and adjacent to Orlando International Airport.
- Excellent access to Sand Lake Road, S. Orange Avenue and Orange Blossom Trail (US 441).
- Approved Foreign Trade Zone.
- Access to Port Tampa Bay via Interstate 4 (I-4).

## Property Features

|                    |                 |
|--------------------|-----------------|
| Available Space    | 33,372 SF       |
| Office SF          | 6,075 SF        |
| Clear Height       | 28'             |
| Column Spacing     | 53' - 60' x 50' |
| Speed Bay          | 60'             |
| Dock Doors         | 9               |
| Truck Court        | 165'            |
| Car Parking Spaces | 193             |
| Lighting           | LED             |
| Sprinkler System   | ESFR            |



Unlock the full potential of your warehouse with one strategic, single-source partner.



**AIPO**  
**Paul Sabga**  
psabga@aipo.net  
ph +1 407 927 3981

**Prologis**  
**John Kruszewski**  
jkruszewski@prologis.com  
ph +1 407 244 7109

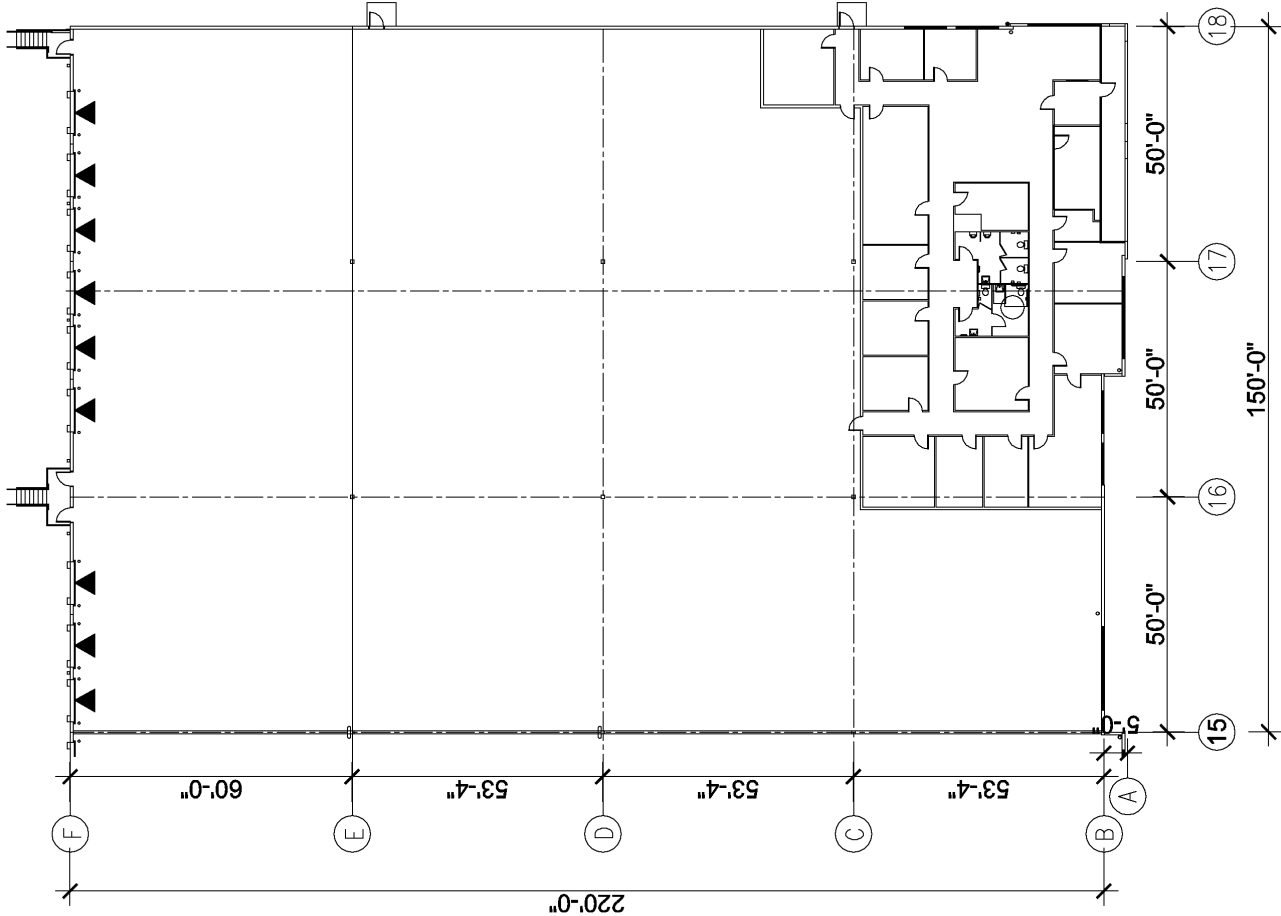
PROLOGIS  
PARK AT AIPO  
BUILDING

2487 Tradeport Drive, Suite 900  
Orlando, FL 32824

|             |           |
|-------------|-----------|
| Total:      | 33,372 SF |
| Office:     | 6,075 SF  |
| Warehouse:  | 27,297 SF |
| Dock Doors: | 9         |

LEGEND

- ▲ Dock Position
- ◆ Drive-In Door





Unlock the full potential of your warehouse with one strategic, single-source partner.



**AIPO**  
**Paul Sabga**  
psabga@aipo.net  
ph +1 407 927 3981

**Prologis**  
**John Kruszewski**  
jkruszewski@prologis.com  
ph +1 407 244 7109