

FOR SALE

MEDICAL/PROFESSIONAL OFFICE CONDO BUILDING



CHAMPIONS
DFW COMMERCIAL REALTY

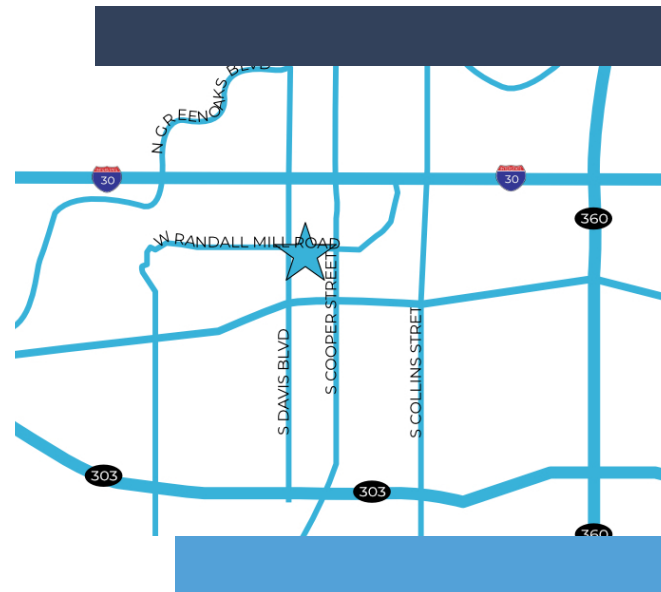
912 WRIGHT ST, STE D, ARLINGTON, TX 76012



PROPERTY HIGHLIGHTS

- 1,739 SF
- Medical/Professional Office Condo Unit
- Excellent parking, including covered parking for owner
- Equipped with 4 exam rooms and 5 restrooms
- Located in the heart of Arlington's Medical District
- Minutes from AT&T Stadium, Globe Life Field and Texas Live
- Proximity to Arlington Memorial Hospital
- Located near Cooper Street & Randall Mill Road

SALE PRICE CALL FOR PRICING



CONTACT INFORMATION

ERIC GOODWIN

Office: 817.488.4333
eric@championsdfw.com

GRANT GOODWIN

Office: 817.488.4333
grant@championsdfw.com

Champions DFW Commercial Realty

880 S Village Center Dr., Suite 200, Southlake, TX 76092

©2025 Champions DFW Commercial Realty LLC.

All rights reserved. The information contained herein was obtained from sources believed to be reliable. It is subject to verification. The presentation of this property is submitted subject to errors, omissions, change of price or conditions, prior to sale or lease, or withdrawal without notice.

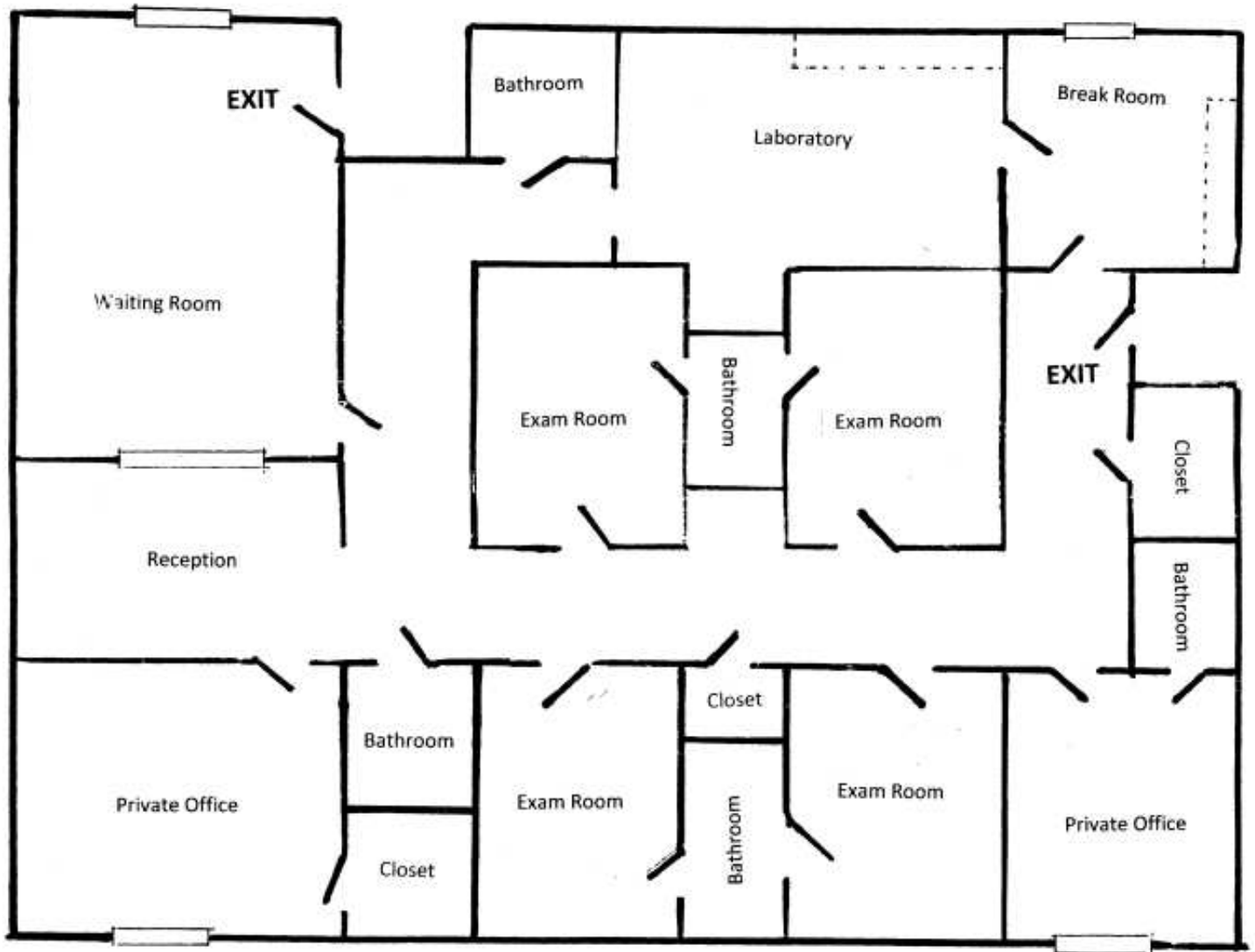
FOR SALE

MEDICAL/PROFESSIONAL OFFICE CONDO BUILDING



912 WRIGHT ST STE D, ARLINGTON, TX 76012

FLOOR PLAN



Champions DFW Commercial Realty

880 S Village Center Dr., Suite 200, Southlake, TX 76092

©2025 Champions DFW Commercial Realty LLC.

All rights reserved. The information contained herein was obtained from sources believed to be reliable. It is subject to verification. The presentation of this property is submitted subject to errors, omissions, change of price or conditions, prior to sale or lease, or withdrawal without notice.

FOR SALE

MEDICAL/PROFESSIONAL OFFICE CONDO BUILDING



912 WRIGHT ST STE D, ARLINGTON, TX 76012

EXTERIOR PHOTOS



Champions DFW Commercial Realty

880 S Village Center Dr., Suite 200, Southlake, TX 76092

©2025 Champions DFW Commercial Realty LLC.

All rights reserved. The information contained herein was obtained from sources believed to be reliable. It is subject to verification. The presentation of this property is submitted subject to errors, omissions, change of price or conditions, prior to sale or lease, or withdrawal without notice.

FOR SALE

MEDICAL/PROFESSIONAL OFFICE CONDO BUILDING



912 WRIGHT ST STE D, ARLINGTON, TX 76012

INTERIOR PHOTOS



Champions DFW Commercial Realty

880 S Village Center Dr., Suite 200, Southlake, TX 76092

©2025 Champions DFW Commercial Realty LLC.

All rights reserved. The information contained herein was obtained from sources believed to be reliable. It is subject to verification. The presentation of this property is submitted subject to errors, omissions, change of price or conditions, prior to sale or lease, or withdrawal without notice.

FOR SALE

MEDICAL/PROFESSIONAL OFFICE CONDO BUILDING



CHAMPIONS
DFW COMMERCIAL REALTY

912 WRIGHT ST STE D, ARLINGTON, TX 76012

INTERIOR PHOTOS



Champions DFW Commercial Realty

880 S Village Center Dr., Suite 200, Southlake, TX 76092

©2025 Champions DFW Commercial Realty LLC.

All rights reserved. The information contained herein was obtained from sources believed to be reliable. It is subject to verification. The presentation of this property is submitted subject to errors, omissions, change of price or conditions, prior to sale or lease, or withdrawal without notice.

FOR SALE

MEDICAL/PROFESSIONAL OFFICE CONDO BUILDING



CHAMPIONS
DFW COMMERCIAL REALTY

912 WRIGHT ST STE D, ARLINGTON, TX 76012

RETAILER MAP



Champions DFW Commercial Realty

880 S Village Center Dr., Suite 200, Southlake, TX 76092

©2025 Champions DFW Commercial Realty LLC.

All rights reserved. The information contained herein was obtained from sources believed to be reliable. It is subject to verification. The presentation of this property is submitted subject to errors, omissions, change of price or conditions, prior to sale or lease, or withdrawal without notice.

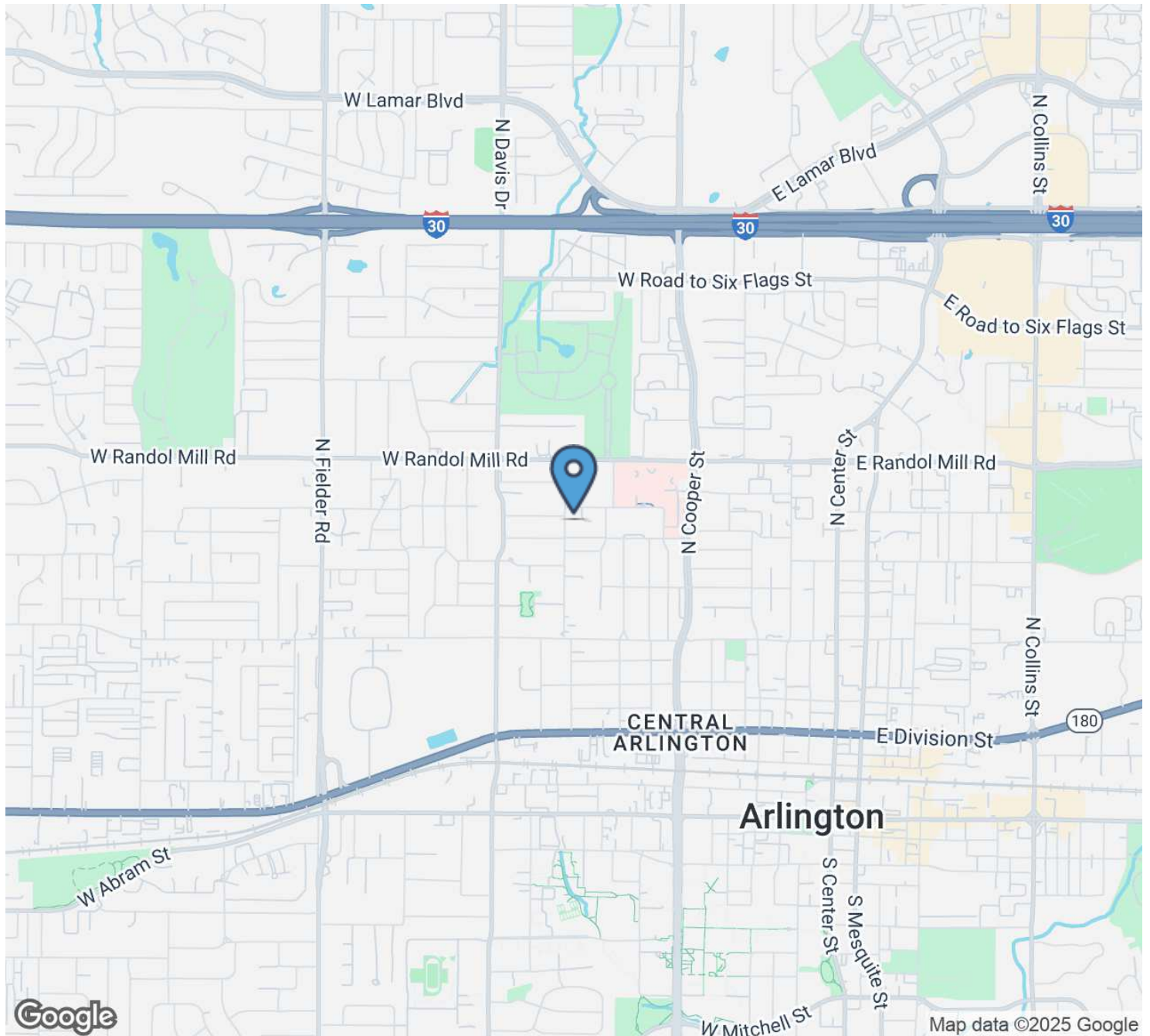
FOR SALE

MEDICAL/PROFESSIONAL OFFICE CONDO BUILDING



912 WRIGHT ST STE D, ARLINGTON, TX 76012

LOCATION MAP



Champions DFW Commercial Realty

880 S Village Center Dr., Suite 200, Southlake, TX 76092

©2025 Champions DFW Commercial Realty LLC.

All rights reserved. The information contained herein was obtained from sources believed to be reliable. It is subject to verification. The presentation of this property is submitted subject to errors, omissions, change of price or conditions, prior to sale or lease, or withdrawal without notice.

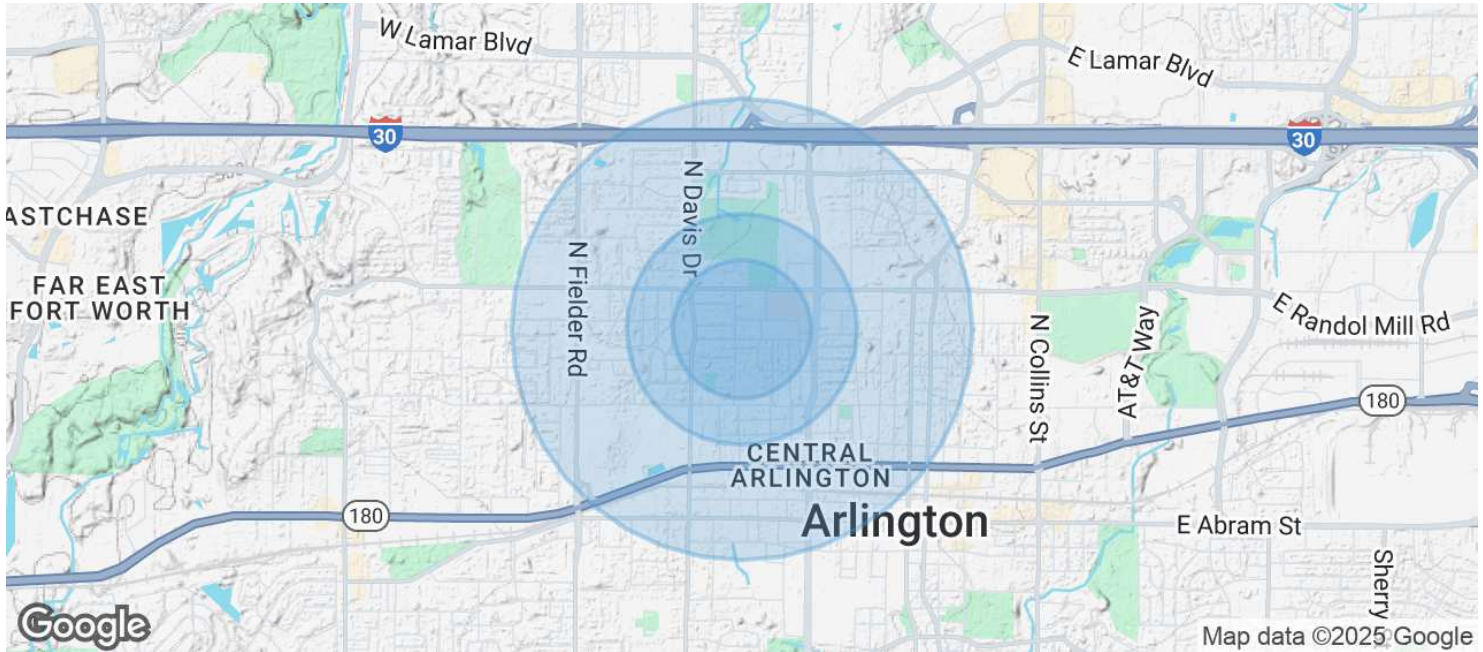
FOR SALE

MEDICAL/PROFESSIONAL OFFICE CONDO BUILDING



912 WRIGHT ST STE D, ARLINGTON, TX 76012

DEMOGRAPHICS MAP & REPORT



POPULATION	0.3 MILES	0.5 MILES	1 MILE
Total Population	821	3,314	15,393
Average Age	39	39	36
Average Age (Male)	38	37	35
Average Age (Female)	40	40	37

HOUSEHOLDS & INCOME	0.3 MILES	0.5 MILES	1 MILE
Total Households	339	1,261	5,477
# of Persons per HH	2.4	2.6	2.8
Average HH Income	\$67,613	\$63,581	\$63,435
Average House Value	\$273,094	\$279,841	\$266,135

Demographics data derived from AlphaMap

Champions DFW Commercial Realty

880 S Village Center Dr., Suite 200, Southlake, TX 76092

©2025 Champions DFW Commercial Realty LLC.

All rights reserved. The information contained herein was obtained from sources believed to be reliable. It is subject to verification. The presentation of this property is submitted subject to errors, omissions, change of price or conditions, prior to sale or lease, or withdrawal without notice



912 WRIGHT ST STE D, ARLINGTON, TX 76012

INFORMATION ABOUT BROKERAGE SERVICES



Information About Brokerage Services

Texas law requires all real estate license holders to give the following information about brokerage services to prospective buyers, tenants, sellers and landlords.

TYPES OF REAL ESTATE LICENSE HOLDERS:

- **A BROKER** is responsible for all brokerage activities, including acts performed by sales agents sponsored by the broker.
- **A SALES AGENT** must be sponsored by a broker and works with clients on behalf of the broker.

A BROKER'S MINIMUM DUTIES REQUIRED BY LAW (A client is the person or party that the broker represents):

- Put the interests of the client above all others, including the broker's own interests;
- Inform the client of any material information about the property or transaction received by the broker;
- Answer the client's questions and present any offer to or counter-offer from the client; and
- Treat all parties to a real estate transaction honestly and fairly.

A LICENSE HOLDER CAN REPRESENT A PARTY IN A REAL ESTATE TRANSACTION:

AS AGENT FOR OWNER (SELLER/LANDLORD): The broker becomes the property owner's agent through an agreement with the owner, usually in a written listing to sell or property management agreement. An owner's agent must perform the broker's minimum duties above and must inform the owner of any material information about the property or transaction known by the agent, including information disclosed to the agent or subagent by the buyer or buyer's agent.

AS AGENT FOR BUYER/TENANT: The broker becomes the buyer/tenant's agent by agreeing to represent the buyer, usually through a written representation agreement. A buyer's agent must perform the broker's minimum duties above and must inform the buyer of any material information about the property or transaction known by the agent, including information disclosed to the agent by the seller or seller's agent.

AS AGENT FOR BOTH - INTERMEDIARY: To act as an intermediary between the parties the broker must first obtain the written agreement of *each party* to the transaction. The written agreement must state who will pay the broker and, in conspicuous bold or underlined print, set forth the broker's obligations as an intermediary. A broker who acts as an intermediary:

- Must treat all parties to the transaction impartially and fairly;
- May, with the parties' written consent, appoint a different license holder associated with the broker to each party (owner and buyer) to communicate with, provide opinions and advice to, and carry out the instructions of each party to the transaction.
- Must not, unless specifically authorized in writing to do so by the party, disclose:
 - that the owner will accept a price less than the written asking price;
 - that the buyer/tenant will pay a price greater than the price submitted in a written offer; and
 - any confidential information or any other information that a party specifically instructs the broker in writing not to disclose, unless required to do so by law.

AS SUBAGENT: A license holder acts as a subagent when aiding a buyer in a transaction without an agreement to represent the buyer. A subagent can assist the buyer but does not represent the buyer and must place the interests of the owner first.

TO AVOID DISPUTES, ALL AGREEMENTS BETWEEN YOU AND A BROKER SHOULD BE IN WRITING AND CLEARLY ESTABLISH:

- The broker's duties and responsibilities to you, and your obligations under the representation agreement.
- Who will pay the broker for services provided to you, when payment will be made and how the payment will be calculated.

LICENSE HOLDER CONTACT INFORMATION: This notice is being provided for information purposes. It does not create an obligation for you to use the broker's services. Please acknowledge receipt of this notice below and retain a copy for your records.

Champions DFW Commercial
Realty, LLC

Licensed Broker/Broker Firm Name or
Primary Assumed Business Name

584733

License No.

jim@championsdfw.com

Email

(817) 488-4333

Phone

Jim Kelley

Designated Broker of Firm

545842

License No.

jim@championsdfw.com

Email

(817) 488-4333

Phone

FOR SALE

MEDICAL/PROFESSIONAL OFFICE CONDO BUILDING



912 WRIGHT ST STE D, ARLINGTON, TX 76012

BROKER CONTACTS



ERIC GOODWIN

Vice President

Direct: 817.488.4333
eric@championsdfw.com



GRANT GOODWIN

Sales Associate

Direct: 817.488.4333
grant@championsdfw.com

Champions DFW Commercial Realty

880 S Village Center Dr., Suite 200, Southlake, TX 76092

©2025 Champions DFW Commercial Realty LLC.

All rights reserved. The information contained herein was obtained from sources believed to be reliable. It is subject to verification. The presentation of this property is submitted subject to errors, omissions, change of price or conditions, prior to sale or lease, or withdrawal without notice.



Champions DFW Commercial Realty

880 S Village Center Dr., Suite 200, Southlake, TX 76092

©2025 Champions DFW Commercial Realty LLC.

All rights reserved. The information contained herein was obtained from sources believed to be reliable. It is subject to verification. The presentation of this property is submitted subject to errors, omissions, change of price or conditions, prior to sale or lease, or withdrawal without notice