

# The Shoppes at East Broad

7995 - 8173 E Broad Street  
Reynoldsburg, OH

- Power Center with Space for lease
- Anchor Tenants include TJ MAXX, Hobby Lobby, Half Price Books, Dollar Tree & Lowes
- Other retailers in the area: Target, Meijer, Aldi and Office Max
- Center is adjacent to the Limited Brands Distribution campus
- Strong traffic counts at 35,000 per day

DEMOGRAPHICS	1 MILE	3 MILES	5 MILES
Population	10,723	70,954	150,282
Median HH Income	\$85,291	\$76,986	\$68,777
Education (College)	50.2%	46.8%	45.3%
Median Age	34.1	37.7	37.4
Daytime Population	10,874	69,639	143,822

## Contact Us

**Luke Streng**  
Vice President  
+1 614 781 5130  
luke.streng@cbre.com

**Tyler Thebes**  
Associate  
+1 614 781 5134  
tyler.thebes@cbre.com





## The Shoppes at East Broad

7995-8173 E Broad Street | Reynoldsburg, OH

For Lease

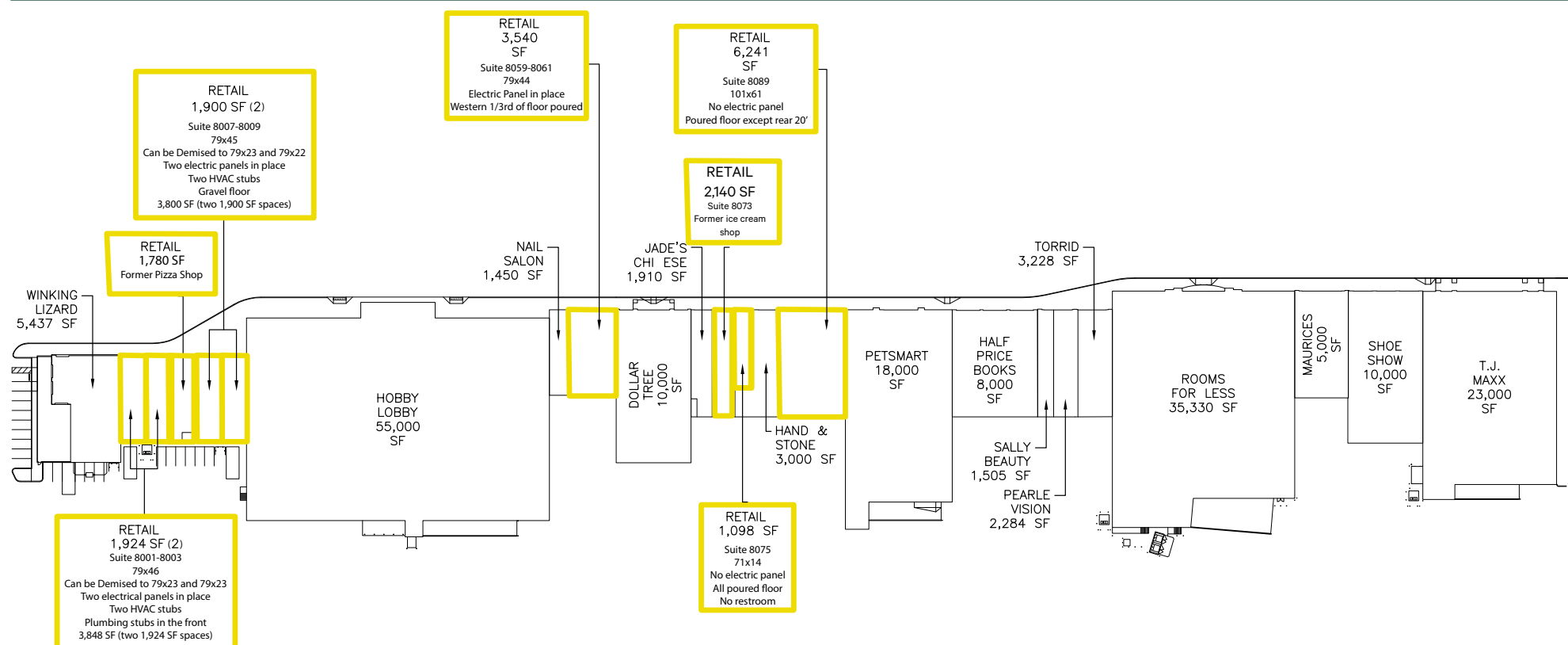




# The Shoppes at East Broad

7995-8173 E Broad Street | Reynoldsburg, OH

For Lease



Unit	Name	Sq Ft
7995	Winking Lizard	5,437
8001	VACANT	1,924
8003	VACANT	1,924
8004	VACANT	1,780
8005	Riser Room	100
8007	VACANT	1,900
8009	VACANT	1,900
8035	Hobby Lobby Stores, Inc	55,000
8057	Khuong Hoang (Nail Talk Nail Salon)	1,440
8059	VACANT	3,540
8067	Dollar Tree Stores Inc	10,000
8071	Can Chen (Jade's Chinese Takeout)	1,910
8073	VACANT	2,140

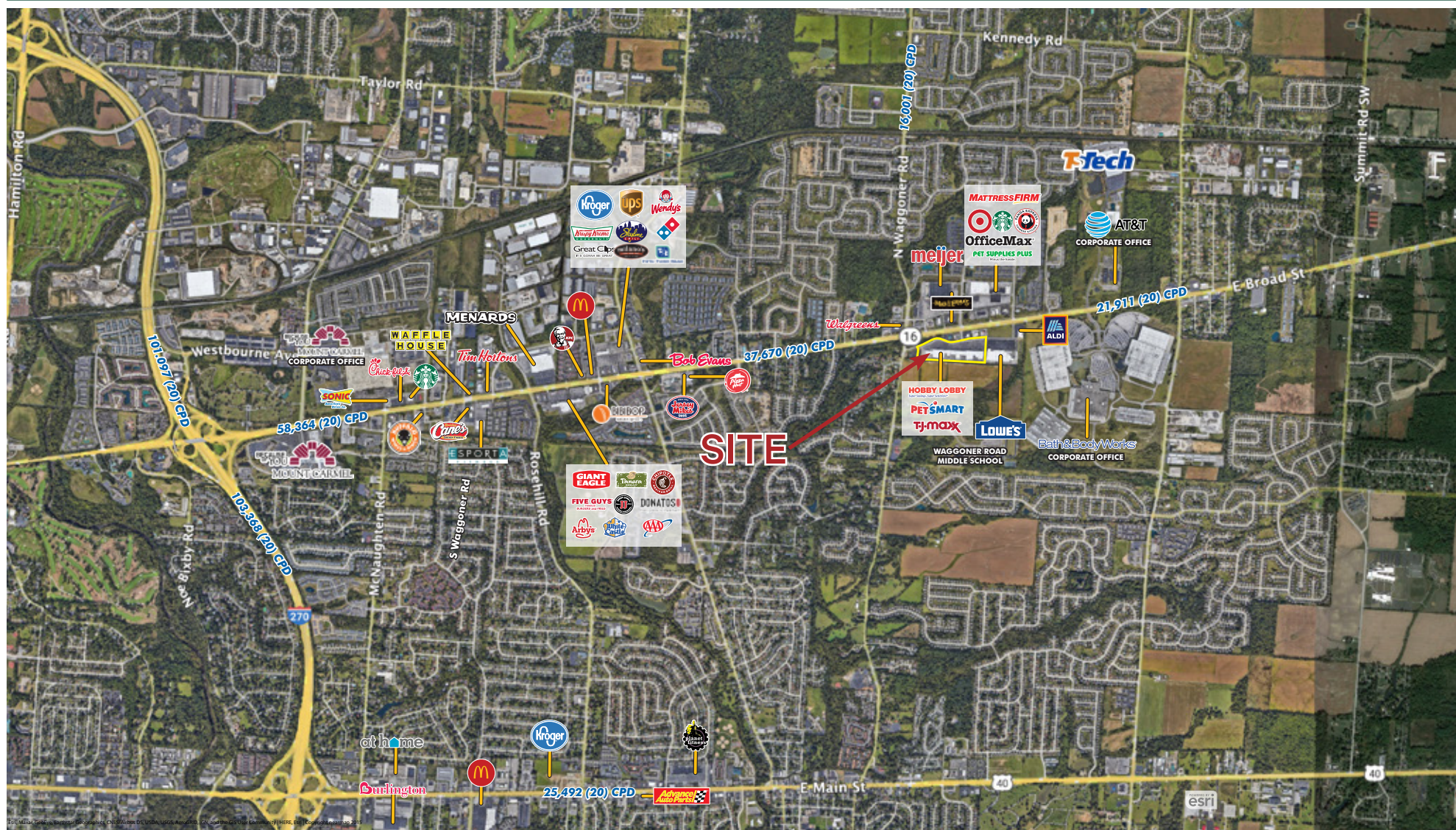
Unit	Name	Sq Ft
8075	VACANT	1,098
8077	Hand & Stone Massage and Facial Spa	3,000
8089	VACANT	6,241
8095	PetSmart	17,931
8107	Half Price Books, Records, Magazines Inc	8,000
8119	Sally Beauty Supply LLC	1,500
8121	West Point Optical Group LLC	2,284
8123	Torrid	3,264
8137	Rooms For Less	35,000
8157	Maurices Incorporated	5,000
8163	Shoe Show Inc	10,000
8173	TJ Maxx	22,500
TOTAL		204,813



# The Shoppes at East Broad

7995-8173 E Broad Street | Reynoldsburg, OH

For Lease



© 2021 CBRE, Inc. All rights reserved. This information has been obtained from sources believed reliable, but has not been verified for accuracy or completeness. You should conduct a careful, independent investigation of the property and verify all information. Any reliance on this information is solely at your own risk. CBRE and the CBRE logo are service marks of CBRE, Inc. All other marks displayed on this document are the property of their respective owners, and the use of such logos does not imply any affiliation with or endorsement of CBRE. Photos herein are the property of their respective owners. Use of these images without the express written consent of the owner is prohibited.