

# THE BROWNSTONES



AVAILABLE NOW  
1,384 SF - 4,576 SF

Bluemound Rd. & Discovery Dr. / Brookfield, WI



RETAIL OPPORTUNITY

# THE BROWNSTONES



## Address

17430-17680 W. Bluemound Rd.  
Brookfield, WI 53045

## Availability

First Floor:

1,593 SF  
2,983 SF } (Can be combined)

Second Floor:

1,384 SF | 908 SF  
2,000 SF | 1,875 SF

Total GLA: 137,816 SF

## Property Details

- Highly accessible and recognizable shopping center anchored by T.J. Maxx and Metro Market (Kroger)
- Located in the heart of Brookfield's retail corridor at the intersection of Bluemound Road and Discovery Drive
- Regional trade area with highly desirable demographics
- Excellent access provided by 3 points along Bluemound Road, including a signalized intersection
- Parking: 690 stalls

## Traffic Counts

35,000 vpd on Bluemound Road  
20,500 vpd on Calhoun Road

## NNN Expenses

\$6.75 PSF



## Demographics

	1 MILE	3 MILES	5 MILES
POPULATION	3,505	41,779	121,985
HOUSEHOLDS	1,518	17,498	52,124
AVG HOUSEHOLD INCOME	\$136,672	\$138,167	\$112,251
DAYTIME POPULATION	7,813	55,684	184,215

# THE BROWNSTONES



## THE BROWNSTONES SHOPPING CENTER

### Current Tenant Listing

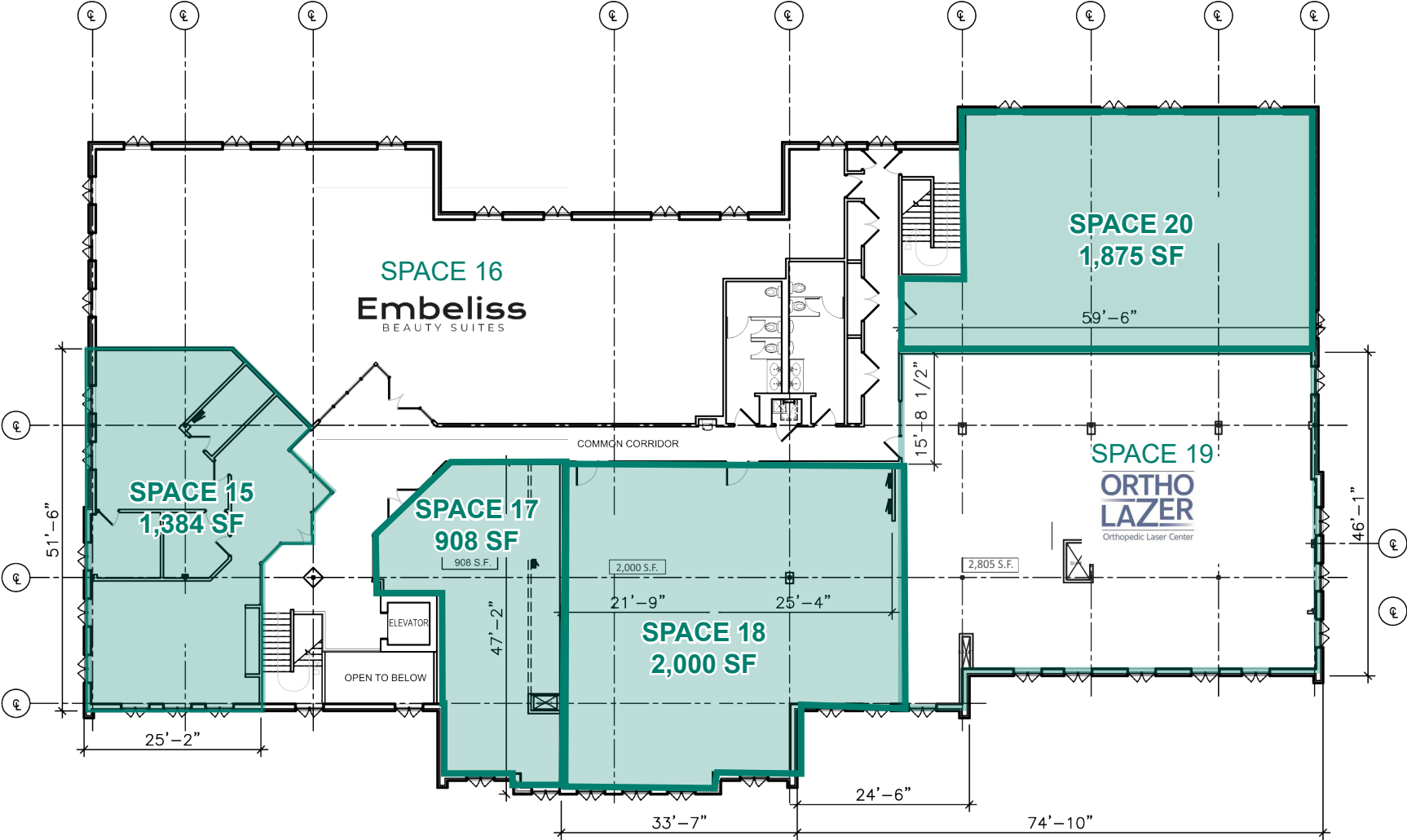
1. Metro Market - 64,871 SF
2. First Watch - 4,553 SF
3. Verizon Wireless - 3,203 SF
4. Crumbl Cookies- 2,744 SF
5. Jersey Mike's Subs - 1,490 SF
6. Pearle Vision - 2,610 SF
7. Burrachos
8. **AVAILABLE - 1,593 SF**
9. **AVAILABLE - 2,983 SF** } **4,576 SF**  
(Can be combined)
10. T.J. Maxx - 25,050 SF
11. Dairy Queen - 1,518 SF
12. Milan Laser Hair Removal - 1,690 SF
13. La Vie Nails & Spa - 1,663 SF
14. BJ's Brewhouse - 8,900 SF
15. **AVAILABLE - 1,384 SF**
16. Embeliss Beauty Suites - 3,331 SF
17. **AVAILABLE - 908 SF**
18. **AVAILABLE - 2,000 SF**
19. Ortholazaer - 2,800 SF
20. **AVAILABLE - 1,875 SF**



# THE BROWNSTONES



SECOND FLOOR SITE PLAN



# THE BROWNSTONES

## BLUEMOUND ROAD CORRIDOR



AERIAL

# THE BROWNSTONES



Scott  
Satula

T: 414.390.1424

[SSatula@MidAmericaGrp.com](mailto:SSatula@MidAmericaGrp.com)



600 N. Plankinton Ave, Suite 301  
Milwaukee, Wisconsin 53203  
414.273.4600

[MidAmericaGrp.com](http://MidAmericaGrp.com)

CONTACT

# BROKER DISCLOSURE TO NON-RESIDENTIAL CUSTOMERS



Prior to negotiating on your behalf the brokerage firm, or an agent associated with the firm, must provide you the following disclosure:

## DISCLOSURE TO CUSTOMERS

You are a customer of the brokerage firm (hereinafter Firm). The Firm is either an agent of another party in the transaction or a subagent of another firm that is the agent of another party in the transaction. A broker or a salesperson acting on behalf of the Firm may provide brokerage services to you. Whenever the Firm is providing brokerage services to you, the Firm and its brokers and salespersons (hereinafter Agents) owe you, the customer, the following duties:

- The duty to provide brokerage services to you fairly and honestly.
- The duty to exercise reasonable skill and care in providing brokerage services to you.
- The duty to provide you with accurate information about market conditions within a reasonable time if you request it, unless disclosure of the information is prohibited by law.
- The duty to disclose to you in writing certain Material Adverse Facts about a property, unless disclosure of the information is prohibited by law.
- The duty to protect your confidentiality. Unless the law requires it, the Firm and its Agents will not disclose your confidential information or the confidential information of other parties.
- The duty to safeguard trust funds and other property held by the Firm or its Agents.
- The duty, when negotiating, to present contract proposals in an objective and unbiased manner and disclose the advantages and disadvantages of the proposals.

Please review this information carefully. An Agent of the Firm can answer your questions about brokerage services, but if you need legal advice, tax advice, or a professional home inspection, contact an attorney, tax advisor, or home inspector. This disclosure is required by section 452.135 of the Wisconsin statutes and is for information only. It is a plain-language summary of the duties owed to a customer under section 452.133(1) of the Wisconsin statutes.

## CONFIDENTIALITY NOTICE TO CUSTOMERS

The Firm and its Agents will keep confidential any information given to the Firm or its Agents in confidence, or any information obtained by the Firm and its Agents that a reasonable person would want to be kept confidential, unless the information must be disclosed by law or you authorize the Firm to disclose particular information. The Firm and its Agents shall continue to keep the information confidential after the Firm is no longer providing brokerage services to you.

The following information is required to be disclosed by law:

1. Material Adverse Facts, as defined in Wis. Stat. § 452.01(5g) (see "Definition of Material Adverse Facts").
2. Any facts known by the Firm or its Agents that contradict any information included in a written inspection report on the property or real estate that is the subject of the transaction.

To ensure that the Firm and its Agents are aware of what specific information you consider confidential, you may list that information below. At a later time, you may also provide the Firm or its Agents with other Information you consider to be confidential.

**NON-CONFIDENTIAL INFORMATION** (*the following information may be disclosed by the Firm and its Agents*): \_\_\_\_\_

\_\_\_\_\_  
(Insert information you authorize to be disclosed, such as financial qualification information.)

**CONFIDENTIAL INFORMATION:** \_\_\_\_\_

## DEFINITION OF MATERIAL ADVERSE FACTS

A "Material Adverse Fact" is defined in Wis. Stat. § 452.01(5g) as an Adverse Fact that a party indicates is of such significance, or that is generally recognized by a competent licensee as being of such significance to a reasonable party, that it affects or would affect the party's decision to enter into a contract or agreement concerning a transaction or affects or would affect the party's decision about the terms of such a contract or agreement.

An "Adverse Fact" is defined in Wis. Stat. § 452.01(1e) as a condition or occurrence that a competent licensee generally recognizes will significantly and adversely affect the value of the property, significantly reduce the structural integrity of improvements to real estate, or present a significant health risk to occupants of the property; or information that indicates that a party to a transaction is not able to or does not intend to meet his or her obligations under a contract or agreement made concerning the transaction.

## NOTICE ABOUT SEX OFFENDER REGISTRY

You may obtain information about the sex offender registry and persons registered with the registry by contacting the Wisconsin Department of Corrections on the Internet at <http://www.doc.wi.gov> or by telephone at 608-240-5830.