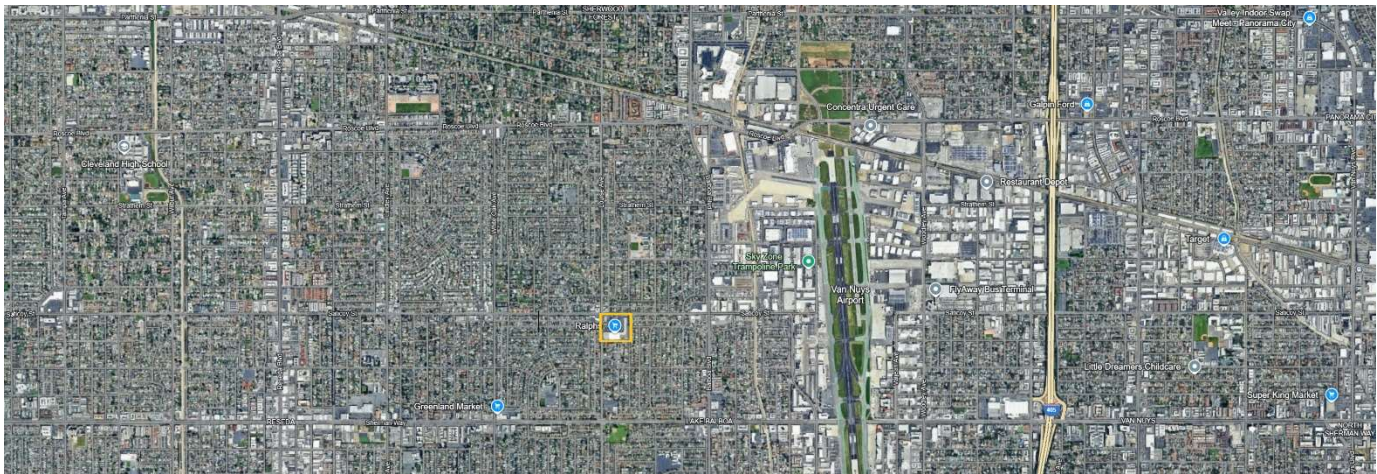
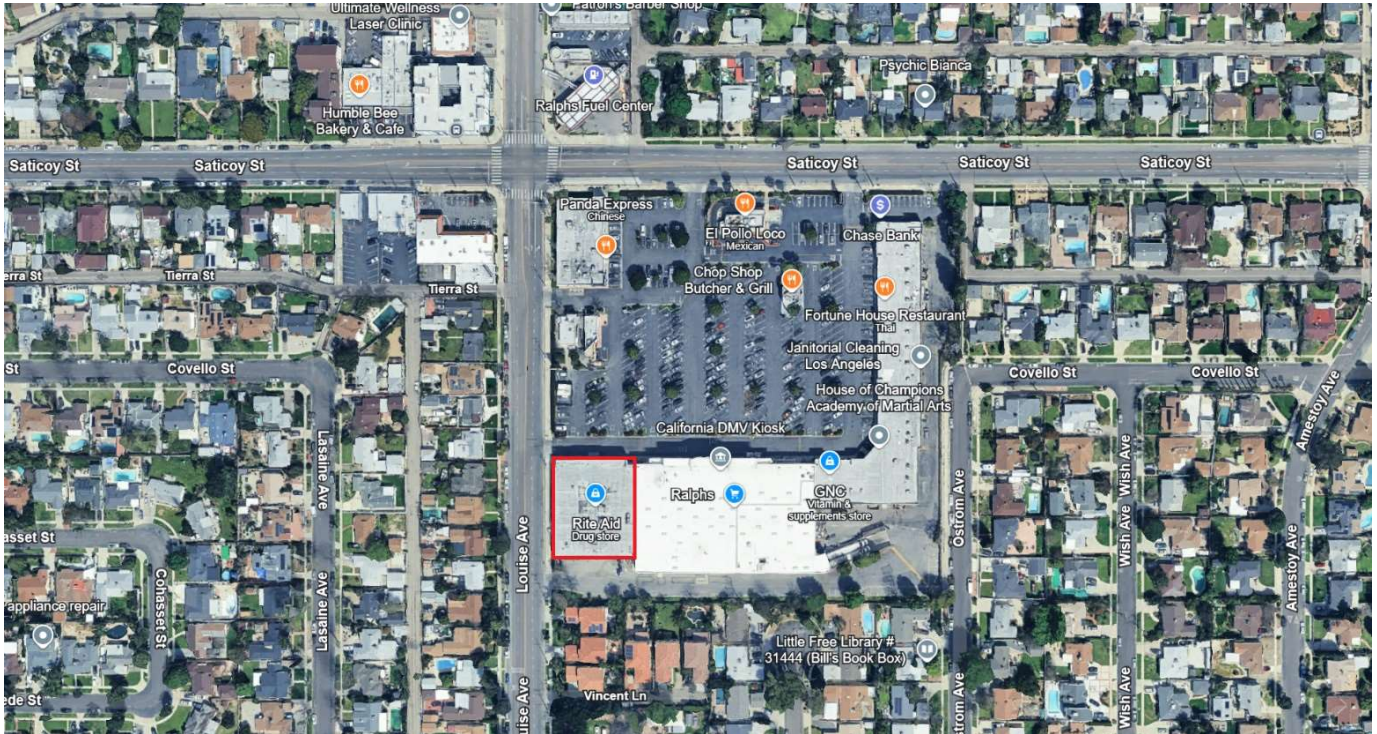


Prime Co-Anchor End Cap Available

“First time in 40 years”

17266 Saticoy St. Lake Balboa, CA 91406

17,640 sf



Highlights:

- Ample parking
- Two (2) double-sided monuments signs on Saticoy St. and Louise Ave.
- Dominant Grocery Anchored Center in trade area
- Ralphs Fuel Center

For Additional Information:

Shawn D Moradian

805.907.6666 or shawnDmoradian@gmail.com