

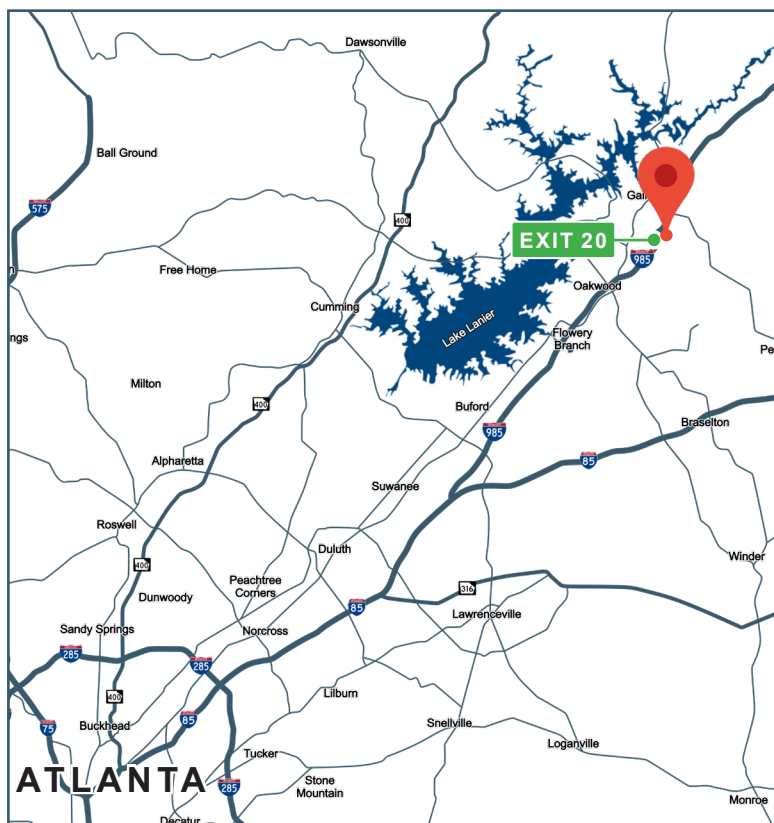
FOR LEASE

2317 DANBURY LN, SUITE A, GAINESVILLE, GA 30507



PROPERTY INFORMATION

AVAILABLE SIZE	±2,963 SF
OFFICE SIZE	±1,200 SF
INTERIOR AMENITIES	<ul style="list-style-type: none">• (3) Three Offices• (2) Two Office Restrooms• (1) One Warehouse Restroom
CLEAR HEIGHT	16'
LOADING DOORS	(1) One 12' x 14' Drive-In Bay
PROPERTY AMENITIES	<ul style="list-style-type: none">• Fenced Lot (<i>shared w/ 1 tenant</i>)• Power & Concrete for Trash Compactor
ZONING	HI (Heavy Industrial)
BUILDING TYPE	Metal Construction with Brick Front
LOCATION	<ul style="list-style-type: none">• ±1 Mile to I-985 (Exit 20)• ±22 Miles to I-85• ±38 Miles to I-285



All information contained herein is believed to be accurate but is not warranted. This offer is subject to errors, omissions, prior sale or withdrawal.



Hughes Commercial Real Estate, Inc.
8215 Roswell Road, Building 700
Atlanta, GA 30350
770-559-1099 | hughes-cre.com

Jake Myddelton
404-436-3272
jake@hughes-cre.com

FOR LEASE

2317 DANBURY LN, SUITE A, GAINESVILLE, GA 30507



All information contained herein is believed to be accurate but is not warranted. This offer is subject to errors, omissions, prior sale or withdrawal.



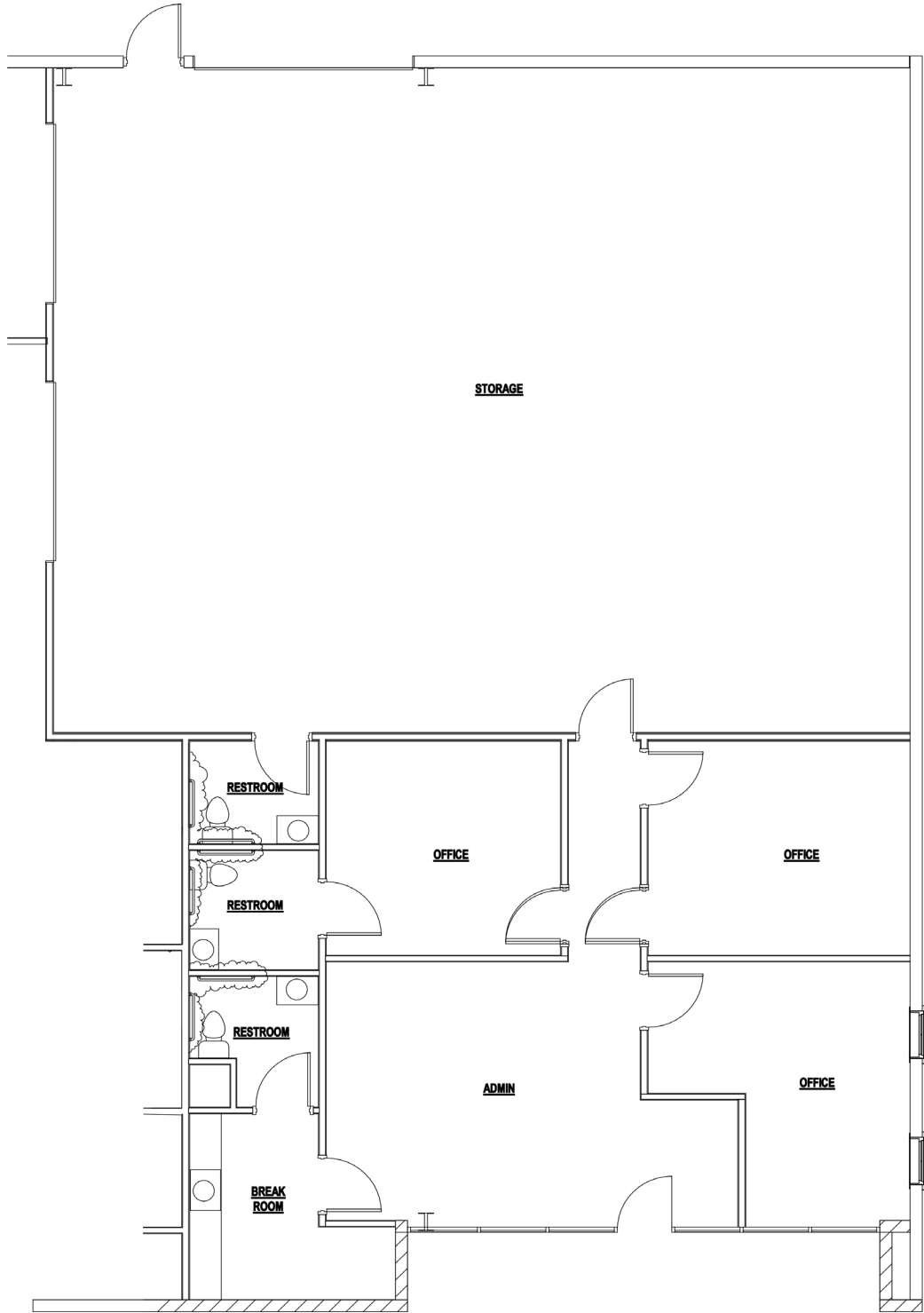
Hughes Commercial Real Estate, Inc.
8215 Roswell Road, Building 700
Atlanta, GA 30350
770-559-1099 | hughes-cre.com

Jake Myddelton
404-436-3272
jake@hughes-cre.com

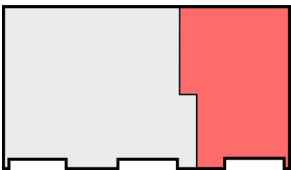
FOR LEASE

2317 DANBURY LN, SUITE A, GAINESVILLE, GA 30507

FLOOR PLAN



KEY PLAN



All information contained herein is believed to be accurate but is not warranted. This offer is subject to errors, omissions, prior sale or withdrawal.



Hughes Commercial Real Estate, Inc.
8215 Roswell Road, Building 700
Atlanta, GA 30350
770-559-1099 | hughes-cre.com

Jake Myddelton
404-436-3272
jake@hughes-cre.com