

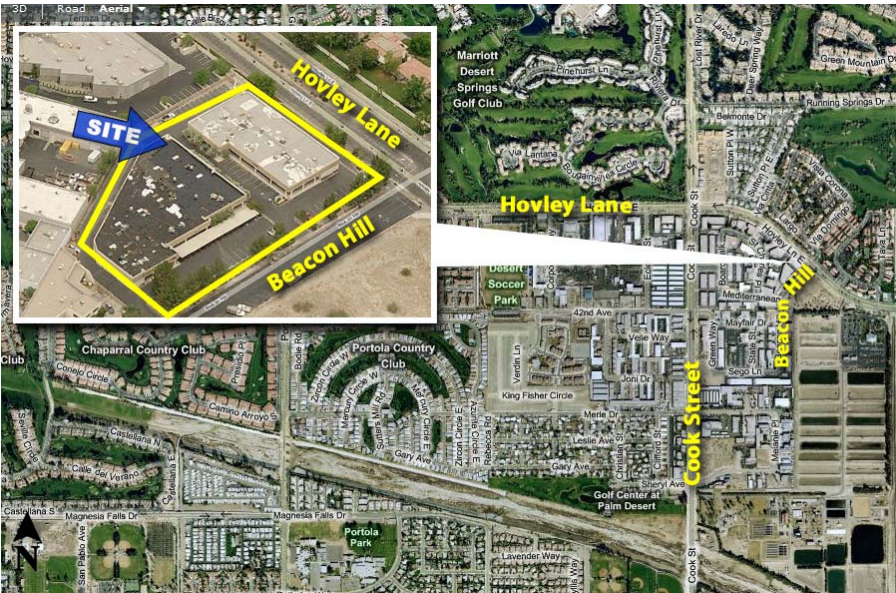
INDUSTRIAL /OFFICE SHOWROOM FOR LEASE

COOK STREET BUSINESS AREA



**Well-Maintained Property • Centrally Located: Just Minutes to Hwy 111 & I-10
Great Street Visibility & Signage • Plenty of Parking**

41921 Beacon Hill, Palm Desert
Off Cook Street & Hovley Lane



AVAILABLE SUITE:

41921 "A" Approx. 2,992 SF \$3,830/Mo. MG

**Measured to the drip line.*

PROPERTY FEATURES:

Built in 1987
Clear Height: 14' - 17'
Rollup Doors (1) 12' x 10'
Zoned - Service Industrial (S-I)
Total Bldg Size: Approx. 24,564 SF



www.baxleyproperties.com
Phone: 760-773-3310
Fax: 760-773-3013
73712 Alessandro Drive, Ste B-4, Palm Desert, CA 92260

John Marshall
john@baxleyproperties.com
760-774-9763
DRE License # 00684680

DISCLAIMER:

The information above has been obtained from sources believed reliable. While we do not doubt its accuracy, we have not verified it and make no guarantee, warranty or representation about it. It is your responsibility to independently confirm its accuracy and completeness. Any projections, opinions, assumptions or estimates used are for example only, and do not represent the current or future performance of the property.

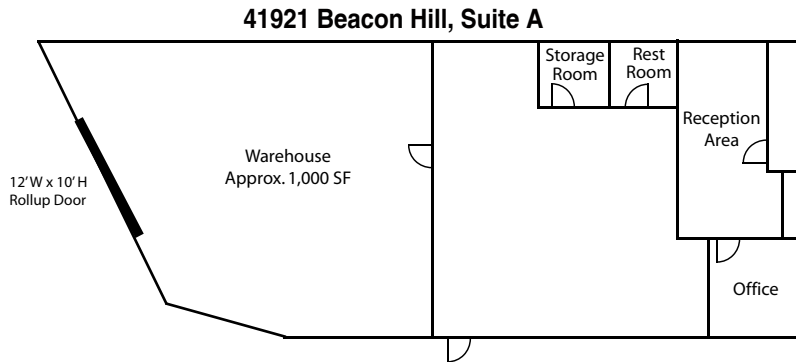
12/6/2024

INDUSTRIAL / OFFICE SHOWROOM FOR LEASE

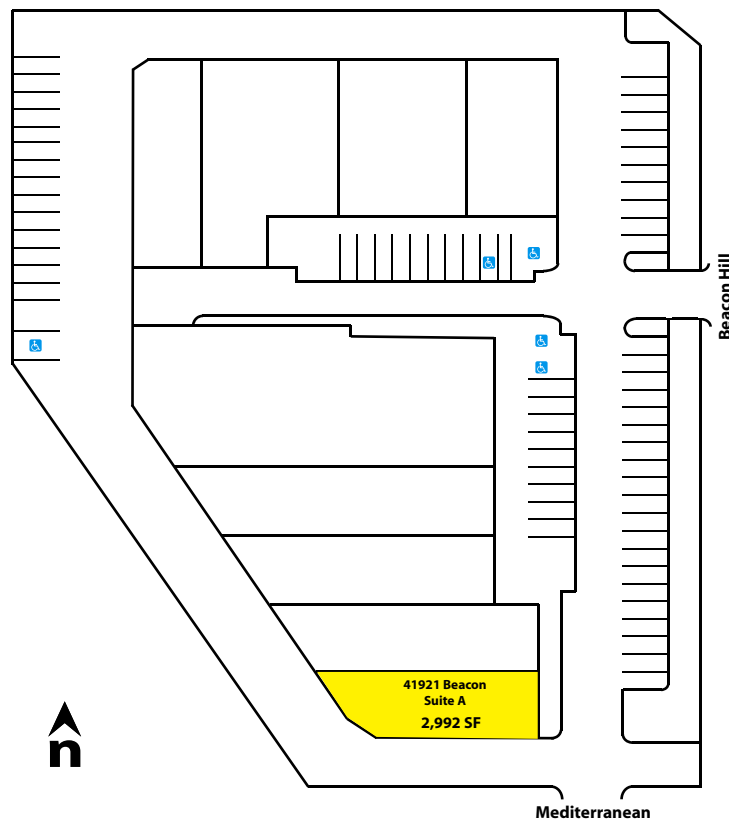
41921 BEACON HILL, SUITE A, PALM DESERT, CA

Site Plan

Approximately 2,992 SF



SITE LAYOUT



DISCLAIMER:

The information above has been obtained from sources believed reliable. While we do not doubt its accuracy, we have not verified it and make no guarantee, warranty or representation about it. It is your responsibility to independently confirm its accuracy and completeness. Any projections, opinions, assumptions or estimates used are for example only, and do not represent the current or future performance of the property.