

58 MAIDEN LN

SAN FRANCISCO, CA 94108

*Full Floor Suites Available
For Lease in Union Square,
San Francisco*

SUITE AVAILABILITY

Suite #	Total SF
SUITE 300	±8,182
SUITE 500	±7,234

Exclusively listed by

JIM WALKER
415.229.8910
jim.walker@kidder.com
LIC N° 01750435

SCOTT VIX
415.229.8924
scott.vix@kidder.com
LIC N° 01407761

KIDDER.COM





Prestigious office space in the heart of Union Square, known for its vibrant atmosphere and central location in San Francisco.

Two (2) lobby entrance (165 Post & 58 Maiden Lane)

Elevator access

Surrounded by restaurants and retail amenities

5 minute walk to BART station

99

WALKER'S SCORE

100

TRANSIT SCORE

88

BIKE SCORE

JIM WALKER

415.229.8910

jim.walker@kidder.com

LIC N° 01750435

SCOTT VIX

415.229.8924

scott.vix@kidder.com

LIC N° 01407761

THIRD FLOOR PLAN

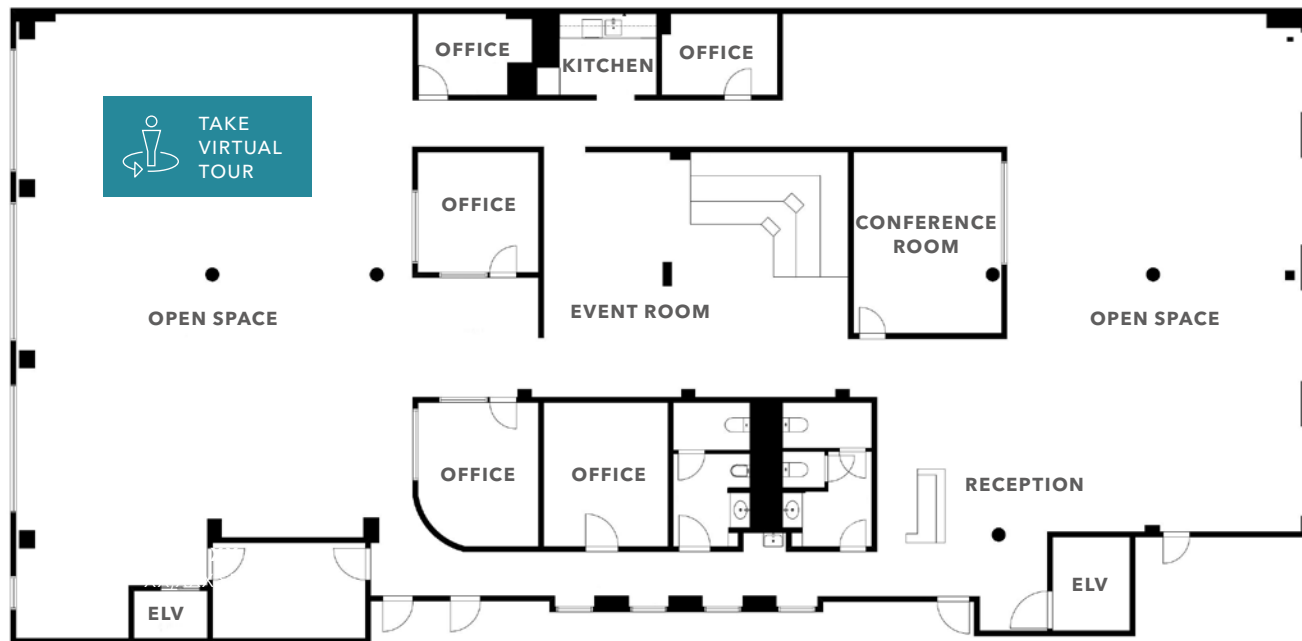
Full floor creative office suite

±8,182 SF

AVAILABLE

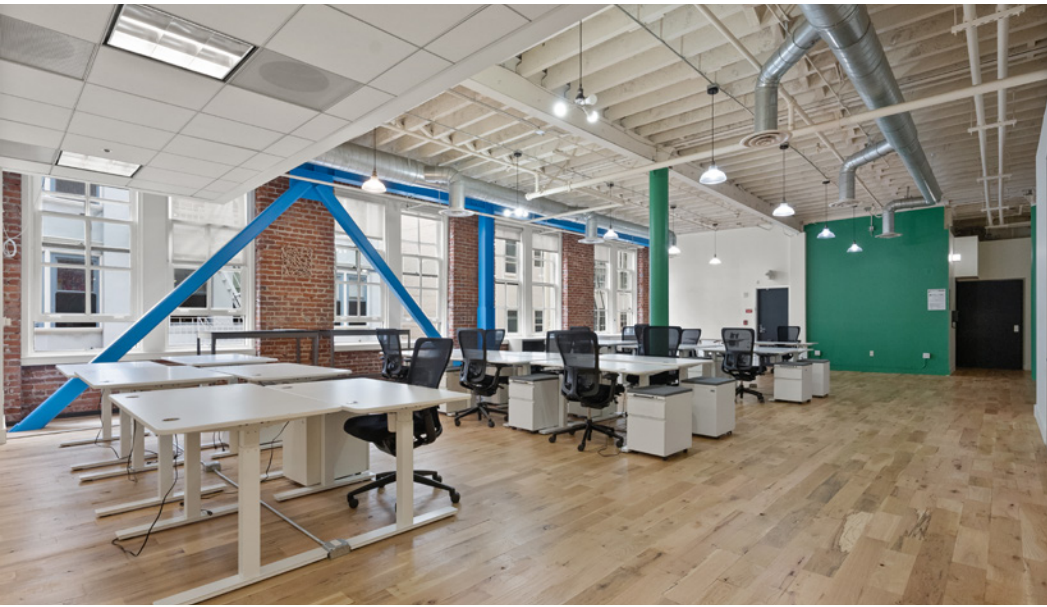
5

OFFICES



- Full floor creative office suite
- Two (2) standard offices
- One (1) conference room
- Three (3) small offices
- Two (2) large open areas
- One (1) event room (stadium seating)
- Kitchen
- 11 foot exposed vaulted ceilings
- Wood floors
- Operable windows & HVAC





5TH FLOOR PLAN

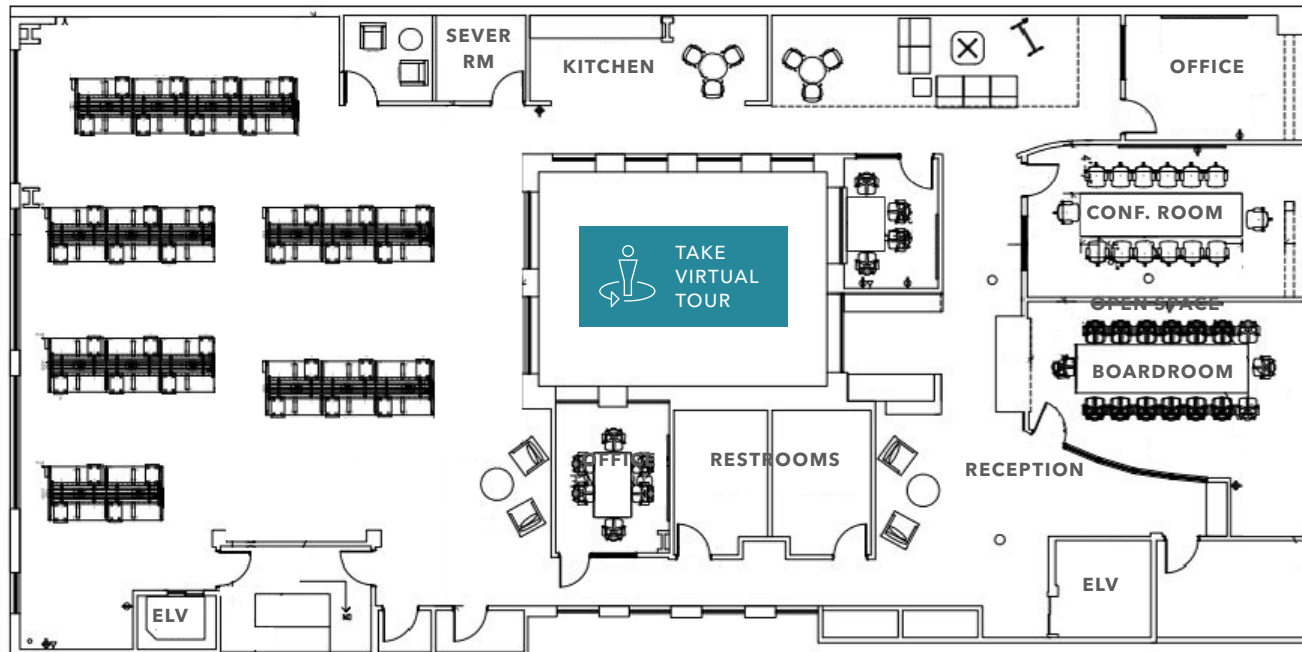
Full floor creative office suite

±7,234 SF

AVAILABLE

1

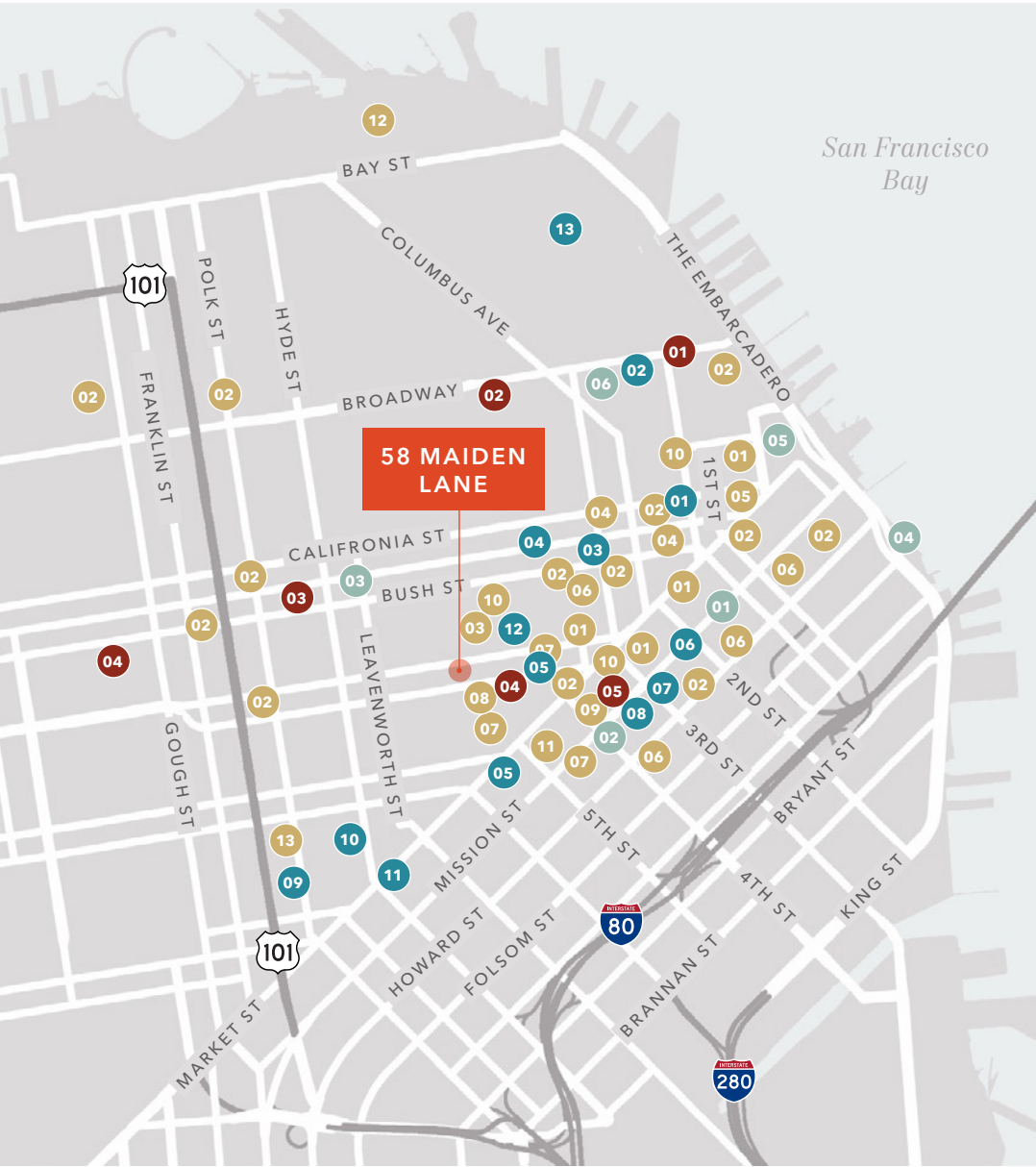
OFFICES



- 2 large conference rooms
- 3 medium conference rooms
- 6 phone booths
- 1 server room
- Open kitchen
- 15 foot exposed vaulted ceilings
- Wood floors
- Operable windows & HVAC







NEARBY AMENITIES

RESTAURANTS & BARS

- 01 Peets Coffee
- 02 Starbucks
- 03 Morton's
- 04 Subway
- 05 Noah's Bagels
- 06 Chipotle
- 07 Jamba Juice
- 08 Cheesecake Factory
- 09 California Pizza Kitchen
- 10 McDonald's
- 11 Shake Shack
- 12 In-N-Out Burger
- 13 Dicky's BBQ

LIFESTYLE & FITNESS

- 01 24 Hour Fitness
- 02 Fitness SF Embarcadero
- 03 Orangetheory Fitness
- 04 Planet Fitness
- 05 Equinox
- 06 Fitness SF Transbay
- 07 SF Museum of Modern Art
- 08 Yerba Buena Center for the Arts
- 09 San Francisco City Hall
- 10 Asian Art Museum
- 11 Orpheum Theatre
- 12 Union Square
- 13 Coit Tower

SCHOOLS

- 01 John Yehall Chin Elementary
- 02 Jean Parker Elementary
- 03 Redding Elementary
- 04 Stuart Hall High School
- 05 Gordon J. Lau Elementary
- 06 City College of San Francisco

RECREATION & PARKS

- 01 Salesforce Park
- 02 Yerba Buena Gardens
- 03 St Mary's Square
- 04 Ricon Park
- 05 Sue Bierman Park
- 06 Sydney G Walton Square



58
MAIDEN LANE

For more lease information or touring, contact

JIM WALKER
415.229.8910
jim.walker@kidder.com
LIC N° 01750435

SCOTT VIX
415.229.8924
scott.vix@kidder.com
LIC N° 01407761

KIDDER.COM

This information supplied herein is from sources we deem reliable. It is provided without any representation, warranty, or guarantee, expressed or implied as to its accuracy. Prospective Buyer or Tenant should conduct an independent investigation and verification of all matters deemed to be material, including, but not limited to, statements of income and expenses. Consult your attorney, accountant, or other professional advisor.

