

Old Wenatchee Jail



Unlocking History. Defining Downtown.

Welcome to Wenatchee, WA

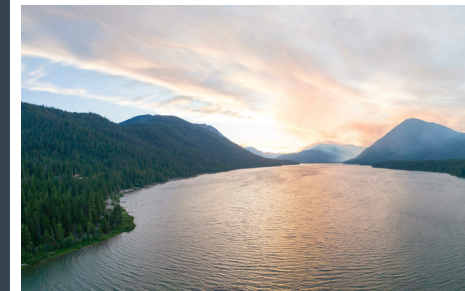
At the meeting point of the Cascade Mountains and the Columbia River lies Wenatchee – the Apple Capital of the World – a city where history and creativity converge. At the southern edge of its vibrant downtown, a new story is unfolding: the restoration of the 1910 Old Jailhouse and the addition of contemporary masonry buildings in a striking architectural dialogue. Together, they're creating a destination where heritage meets modernity – a premier culinary and cultural hub that celebrates Wenatchee's spirit of nature, recreation, and community.

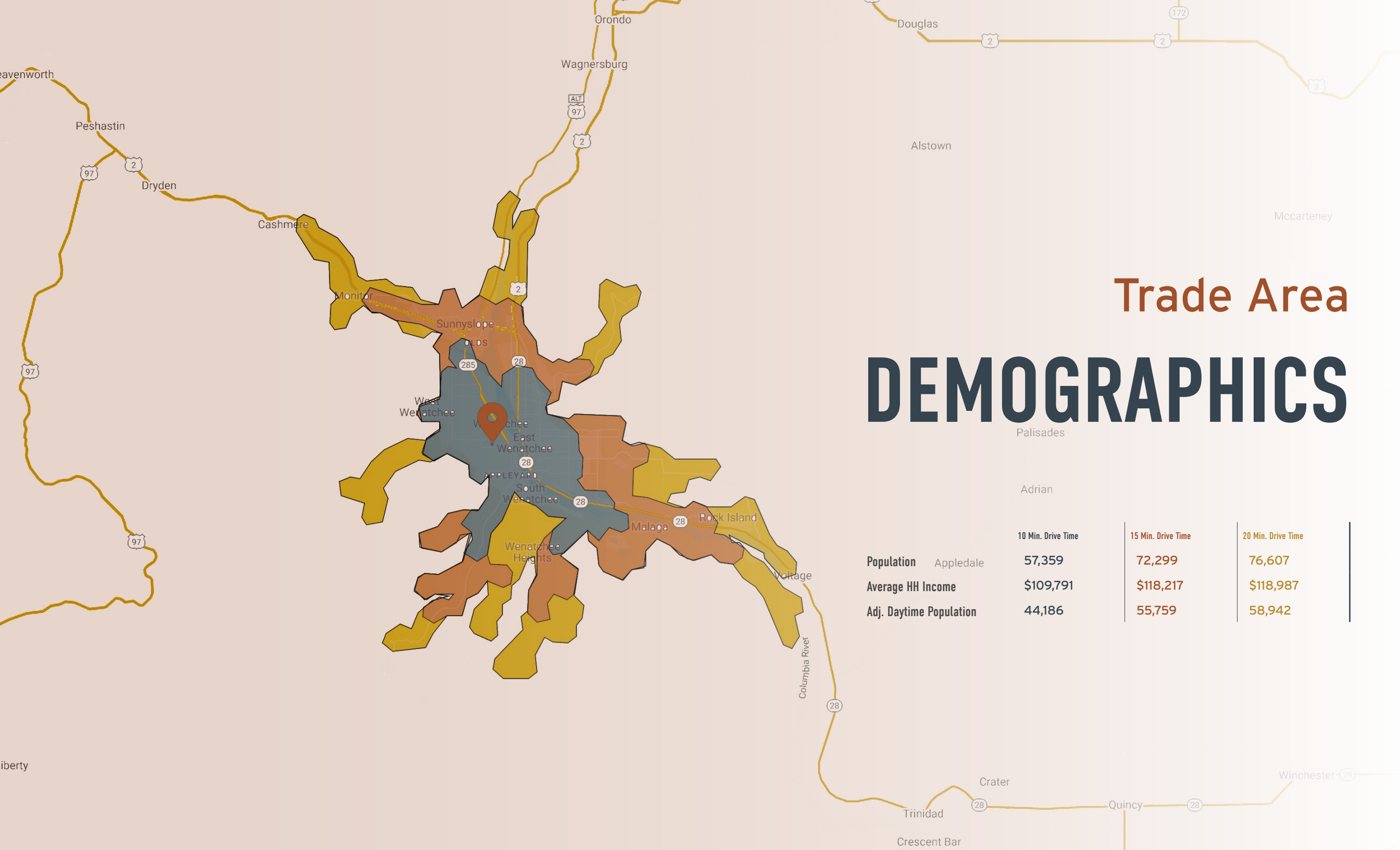


Mountain
Gateway...



...Community
Current





Trade Area

DEMOGRAPHICS

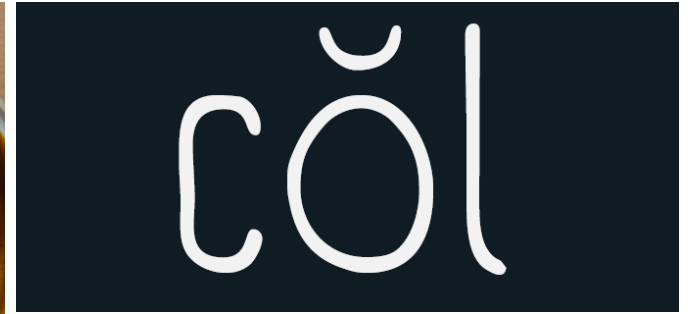
	Palisades	Adrian	10 Min. Drive Time	15 Min. Drive Time	20 Min. Drive Time
Population	Appledale	57,359	72,299	76,607	
Average HH Income	\$109,791	\$118,217	\$118,987		
Adj. Daytime Population	44,186	55,759	58,942		

Authenticity Meets Contemporary Craft

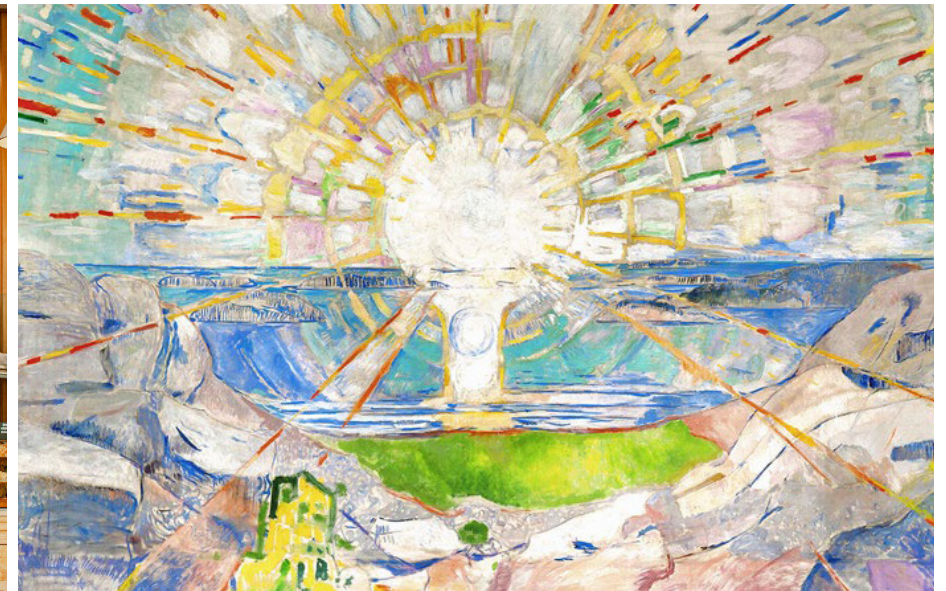
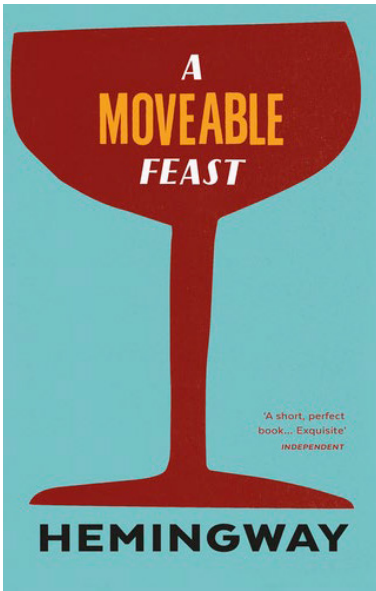
A Transformative Public Realm

- Preserved 1910 Brick Original Architectural Elements.
- Restaurant + Terrace + Cocktail Bar + Bistro + Cafe + Bakery + Butcher + Larder
- New, Dedicated Public Plaza and Courtyard Activation.
- Adjacent to The Majestic Luxury Apartments
- Dedicated Underground Parking Access.
- North Building Space Available





The primary restaurant concept. cöl spans both floors of the south building, split between a more casual daytime space on the ground level, and a more serious evening dining space on the second level.





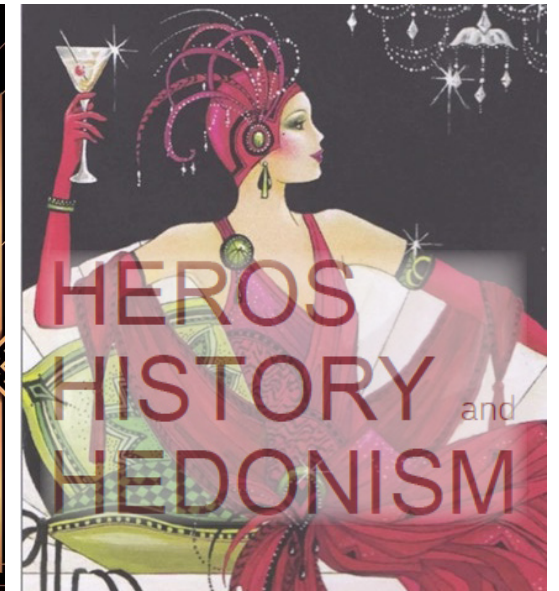
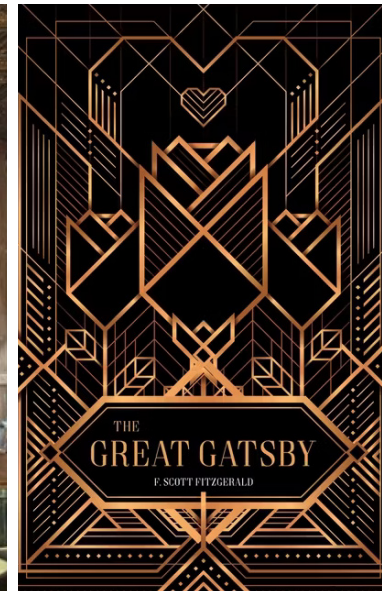
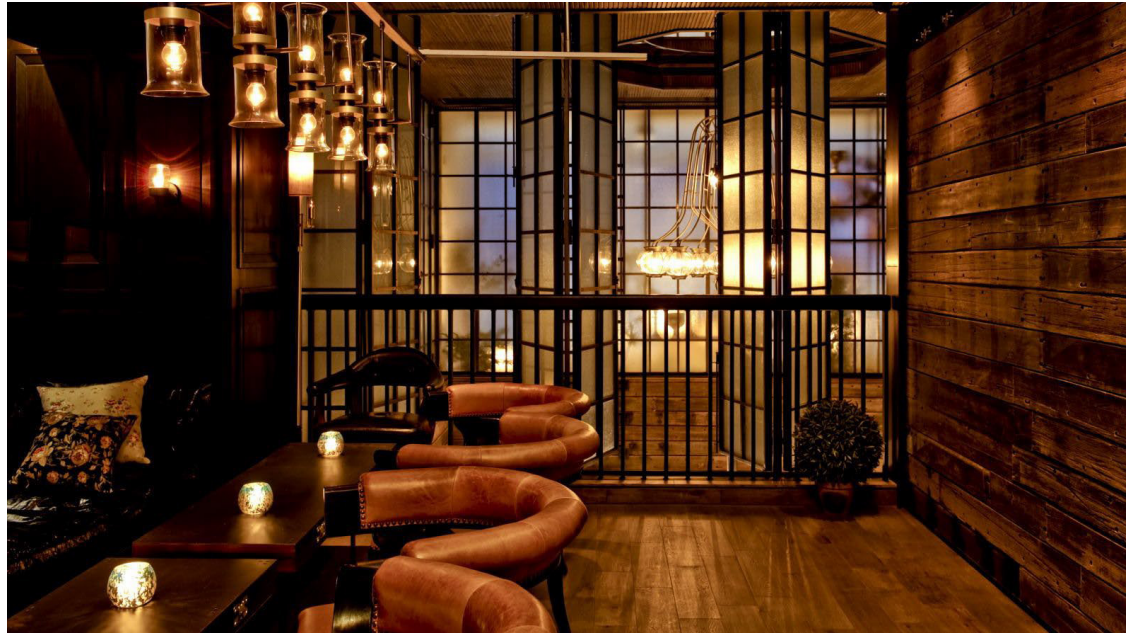
THE VALE BUTCHER & LARDER

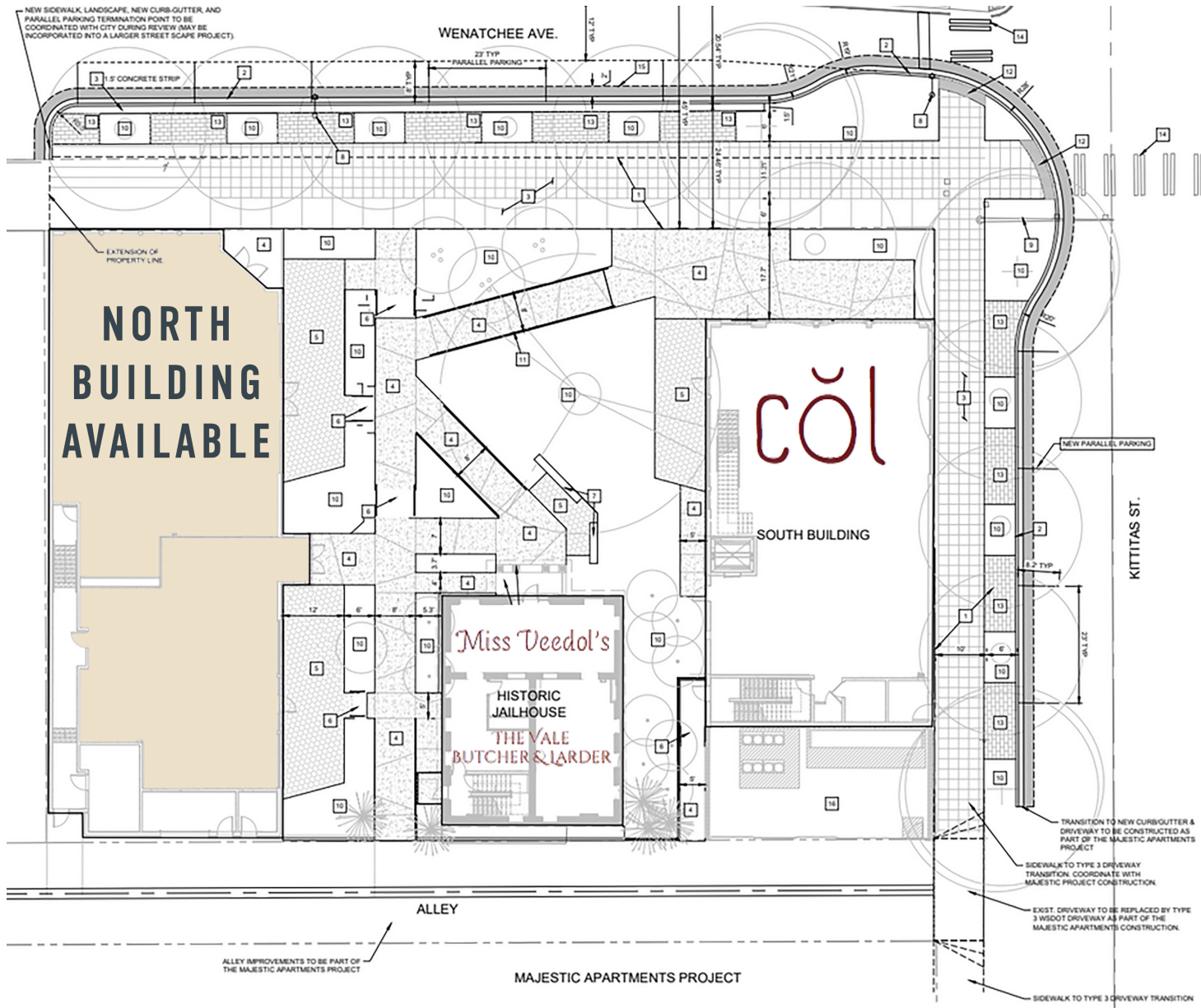
The first floor of the jailhouse is home to a Spanish-style butcher and provisions shop/ Primarily serving as a retail outlet, there is limited seating for guests to enjoy burgers and other items off the grill. The aesthetic here stands in opposition to Miss Veedol's upstairs. Playful wall stencils and tiling create an upbeat atmosphere. The clean, bright and colorful space is in juxtaposition to the dark anti-authority vibes upstairs.



Miss Deedol's

The Jailhouse second floor speakeasy concept specializing in classic cocktails and champagne. The art deco and art nouveau stylings hearken back to the historical era of the jailhouse. Imbued with subtle aviation iconography.





Inquire



PACIFIC ASSET ADVISORS, INC.

Broker Contact:

Ryan Cornish
206.375.6142
ryan@paadvisors.com



Broker Contact:

Angela Oliveri
206.853.1330
aoliveri@fwp-inc.com