



WALDROP PROPERTIES, LLC
Commercial Real Estate Solutions

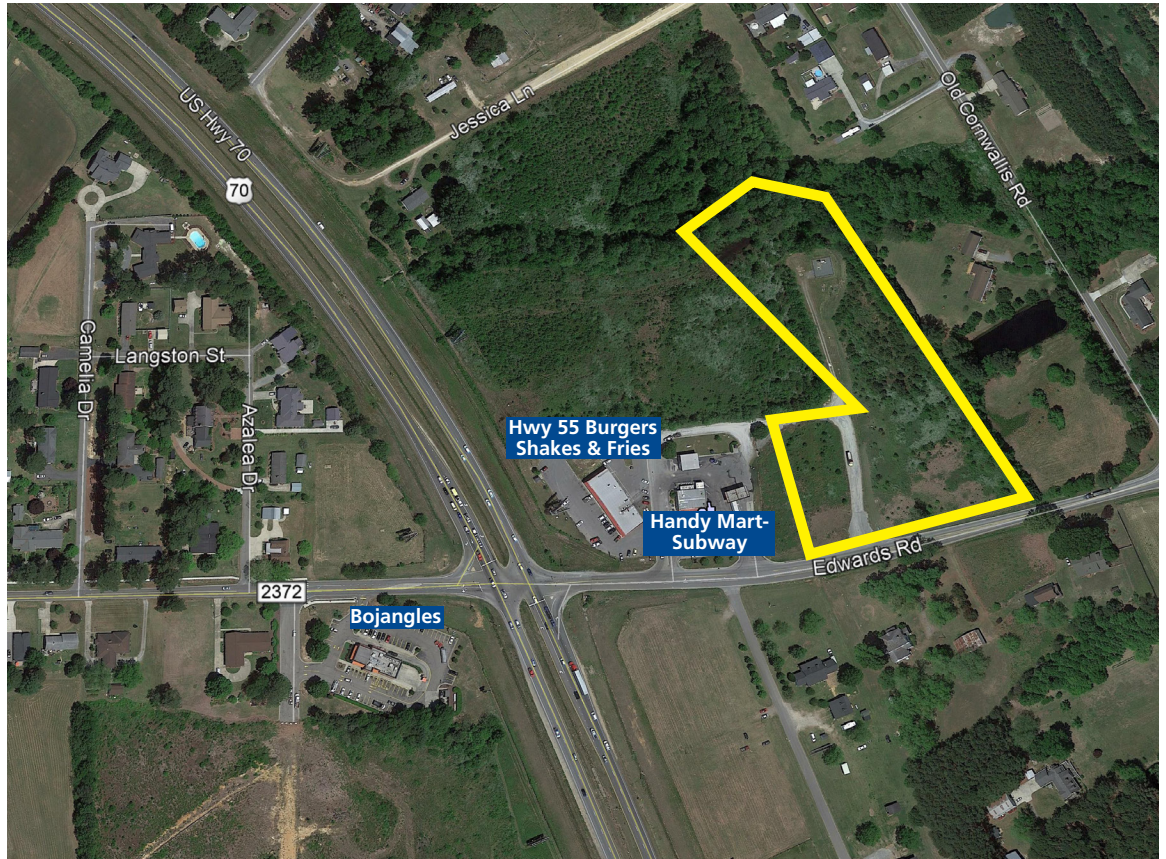
For Sale - Land

+/- 6.06 Acres

950 Edwards Road, Princeton, North Carolina

Near The Intersection Of US Hwy 70 And Edwards Road

- **Offering Price: \$274,000**
- **Acreage:**
Approximately 6.06 Acres
- **Site Map:**
Please See Below/
Attached
- **Zoning: C-3, Highway Commercial**
(Zoning Ordinance Allows 10 Multi-Family Dwellings Per Acre)
- **Proposed Hwy 70 Interchange At US Hwy 70 & Edwards Road:**
<https://www.ncdot.gov/news/public-meetings/Documents/R-5829-pearl-street-edwards-road.pdf>
- **Parcel Number:**
265210-36-9046
- **Utilities: Available**
- **Traffic Count:**
28,000 Vehicles Per Day On US Hwy 70
Source: 2022 Kalibrate Technologies
- **Nearby Businesses:**
Handy Mart-Subway, Hwy 55 Burgers Shakes & Fries, and Bojangles
- **Location:**
Convenient Access To The Signalized Intersection At Hwy 70



for more information contact

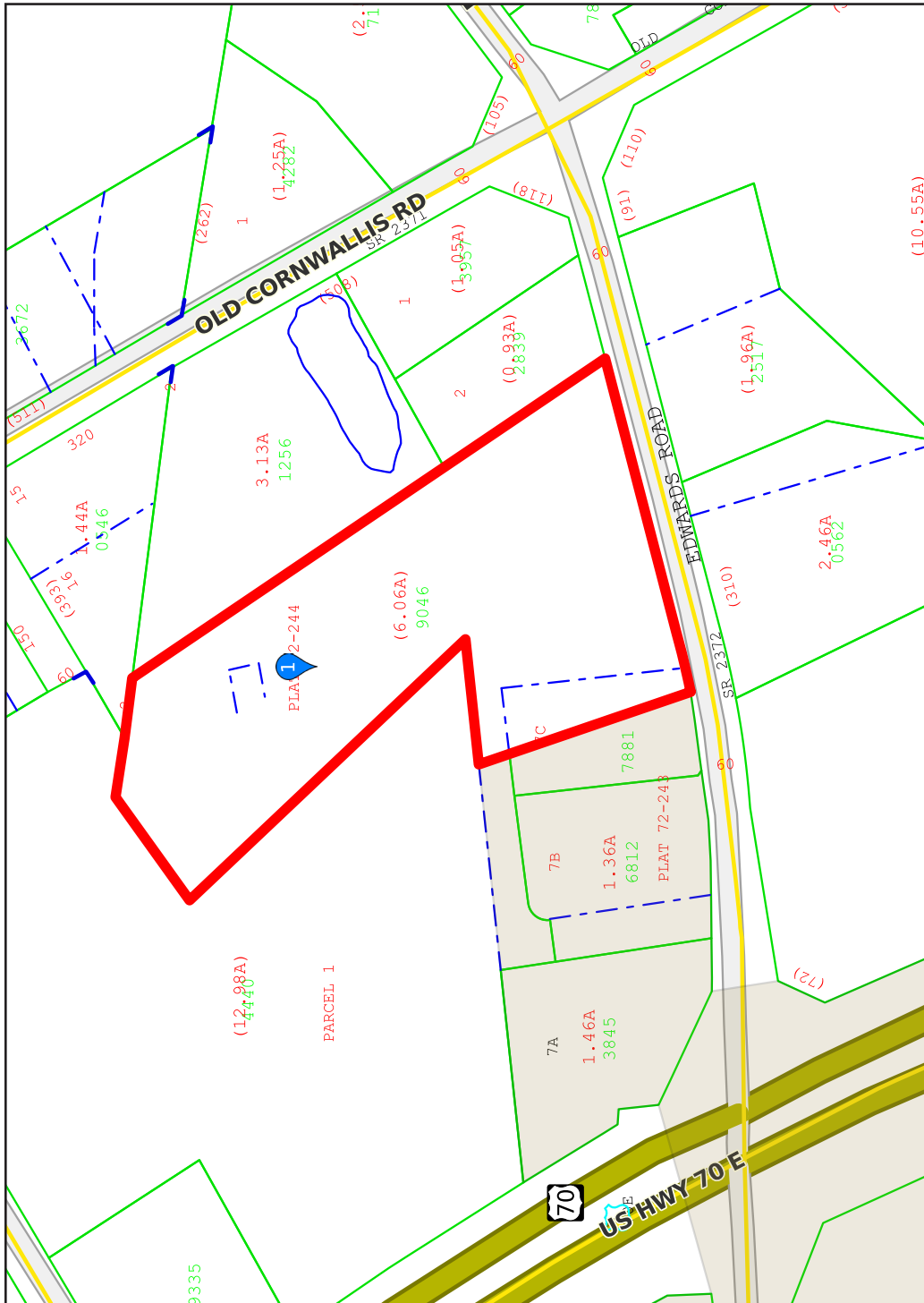
Michael Waldrop at 919-645-1605
michael@wp-cre.com

3700 Computer Dr., Suite 240
Raleigh, NC 27609
Office: 919-645-1605
Fax: 919-645-1606
www.waldropproperties.com

The information contained herein has been obtained from sources deemed reliable, however, no representation or warranty, either expressed or implied, is made as to its completeness or accuracy. Prospective buyers should make their own investigations to ascertain the accuracy of the material contained herein. This offering is subject to change, correction or withdrawal.

950 Edwards Road

Princeton, North Carolina



Site Map

for more information contact

Michael Waldrop at 919-645-1605
michael@wp-cre.com

www.waldropproperties.com

