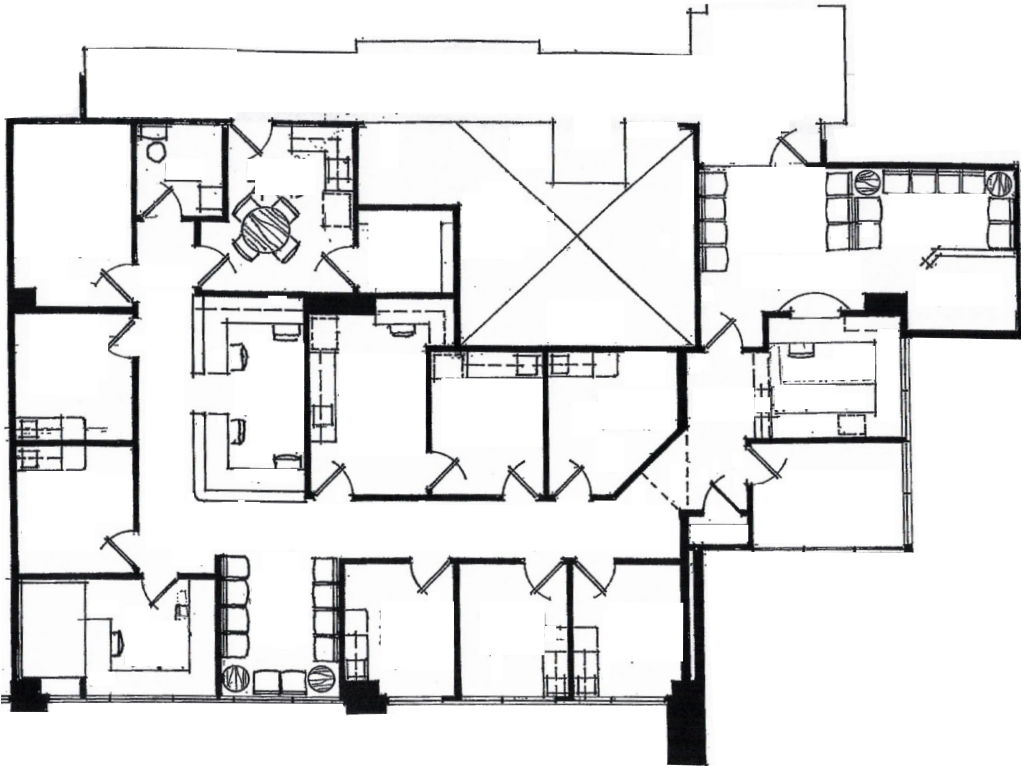




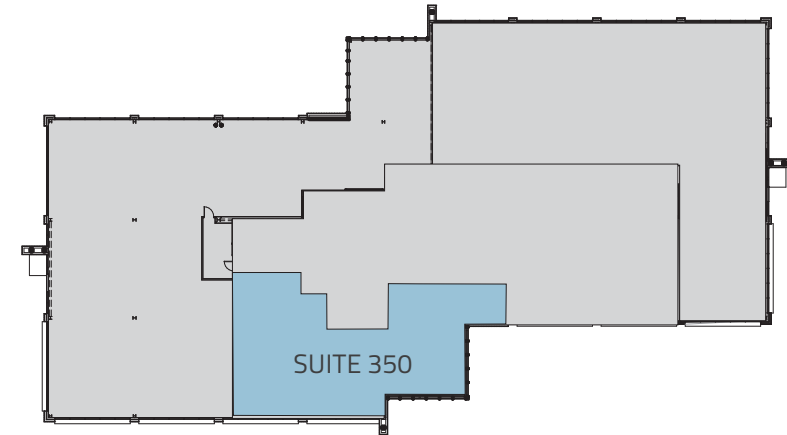
ESTRELLA HEALTH CENTER

MEDICAL SPACE FOR LEASE
9250 WEST THOMAS ROAD, PHOENIX, AZ 85037

Suite 350: ±3,000 RSF



THIRD FLOOR - KEY PLAN



Leasing Information:

Kevin Smigiel

602.265.5502

kevin.smigiel@transwestern.com

Kathleen Morgan

602.809.1048

kathleen.morgan@transwestern.com

Vince Femiano

602.954.7559

vince.femiano@transwestern.com

Andrew Olivet

602.370.2685

andrew.olivet@transwestern.com

TRANSWESTERN REAL ESTATE SERVICES

2501 E Camelback Rd, Ste 1

Phoenix, AZ 85016

transwestern.com

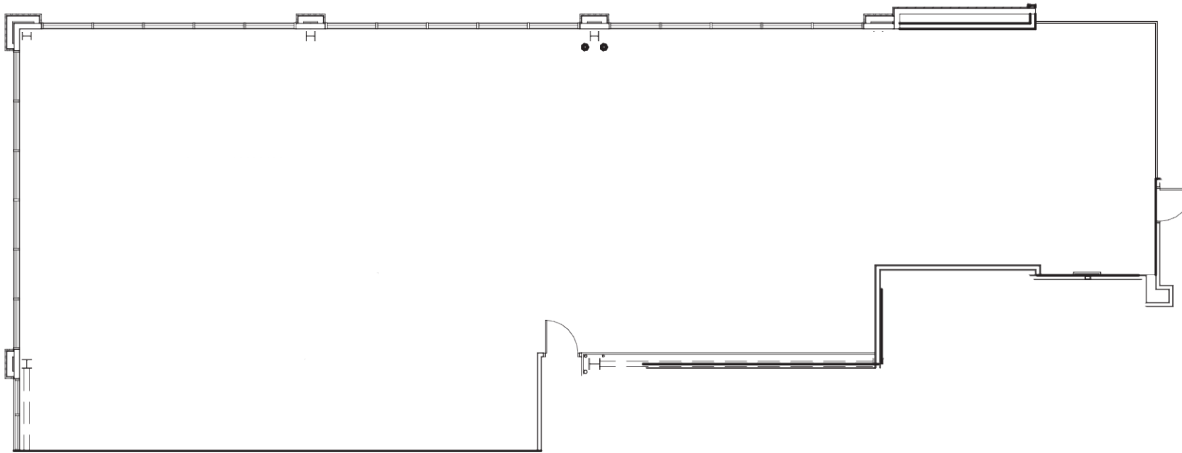
The information provided herein was obtained from sources believed reliable; however, Transwestern makes no guarantees, warranties or representations as to the completeness of accuracy thereof. The presentation of this property is submitted subject to errors, omissions, change of price or conditions, prior to sale or lease, or withdrawal without notice. Copyright © 2025 Transwestern.



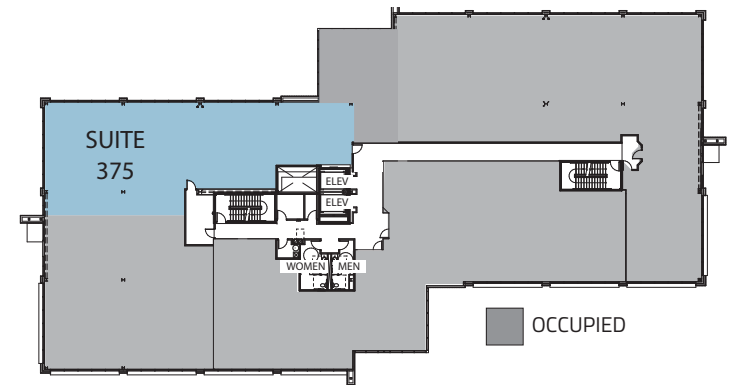
ESTRELLA
HEALTH CENTER

MEDICAL SPACE FOR LEASE
9250 WEST THOMAS ROAD, PHOENIX, AZ 85037

Suite 375: ±4,790 RSF



THIRD FLOOR - KEY PLAN



Leasing Information:

Kevin Smigiel
602.265.5502
kevin.smigiel@transwestern.com

Kathleen Morgan
602.809.1048
kathleen.morgan@transwestern.com

Vince Femiano
602.954.7559
vince.femiano@transwestern.com

Andrew Olivet
602.370.2685
andrew.olivet@transwestern.com



2501 E Camelback Rd, Ste 1
Phoenix, AZ 85016
transwestern.com