



FOR LEASE

6501 Hall Street

St. Louis, MO 63147

Lease Rate:

\$6.50 PSF, NNN

CONTACT US

Daniel Bamberger, SIOR

Executive Vice President
+1 314 584 6226
daniel.bamberger@colliers.com

Joseph Hill, CCIM, SIOR

Executive Vice President
+1 314 584 6213
joseph.hill@colliers.com

Colliers

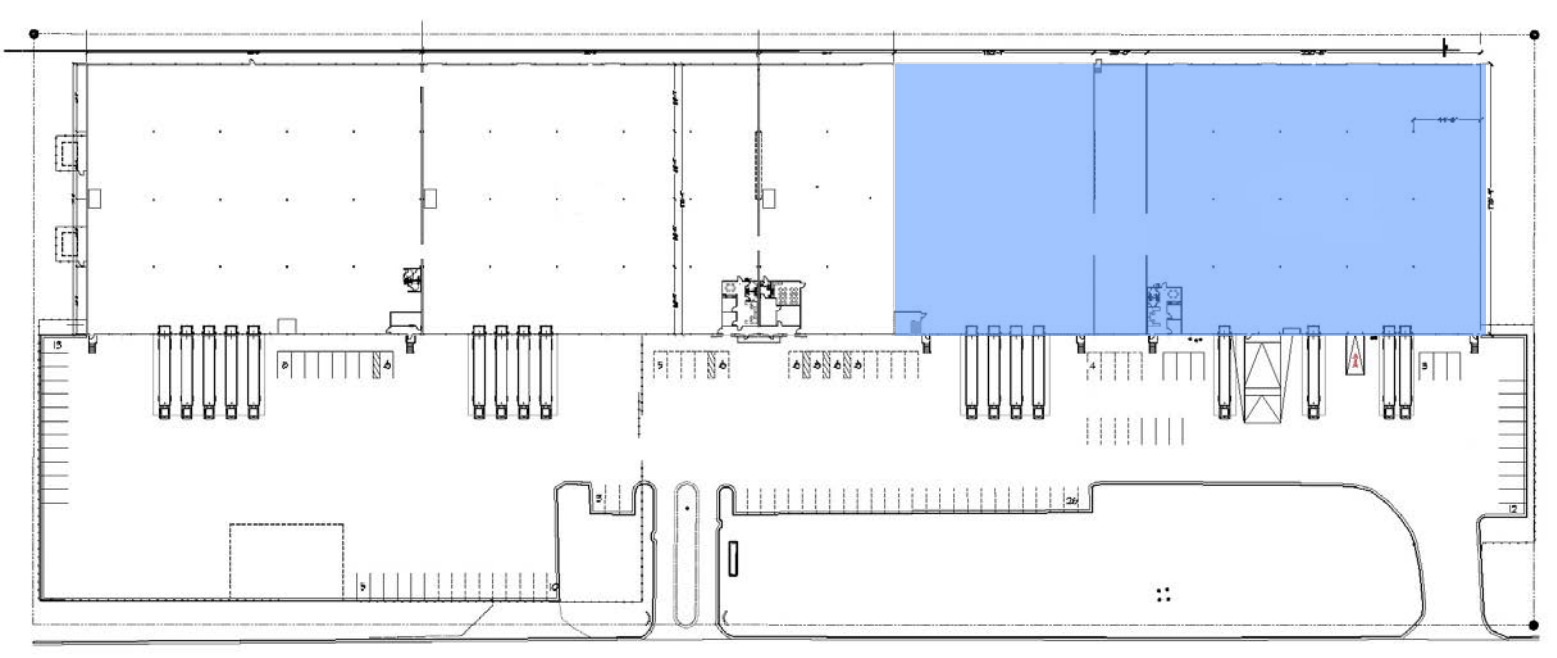
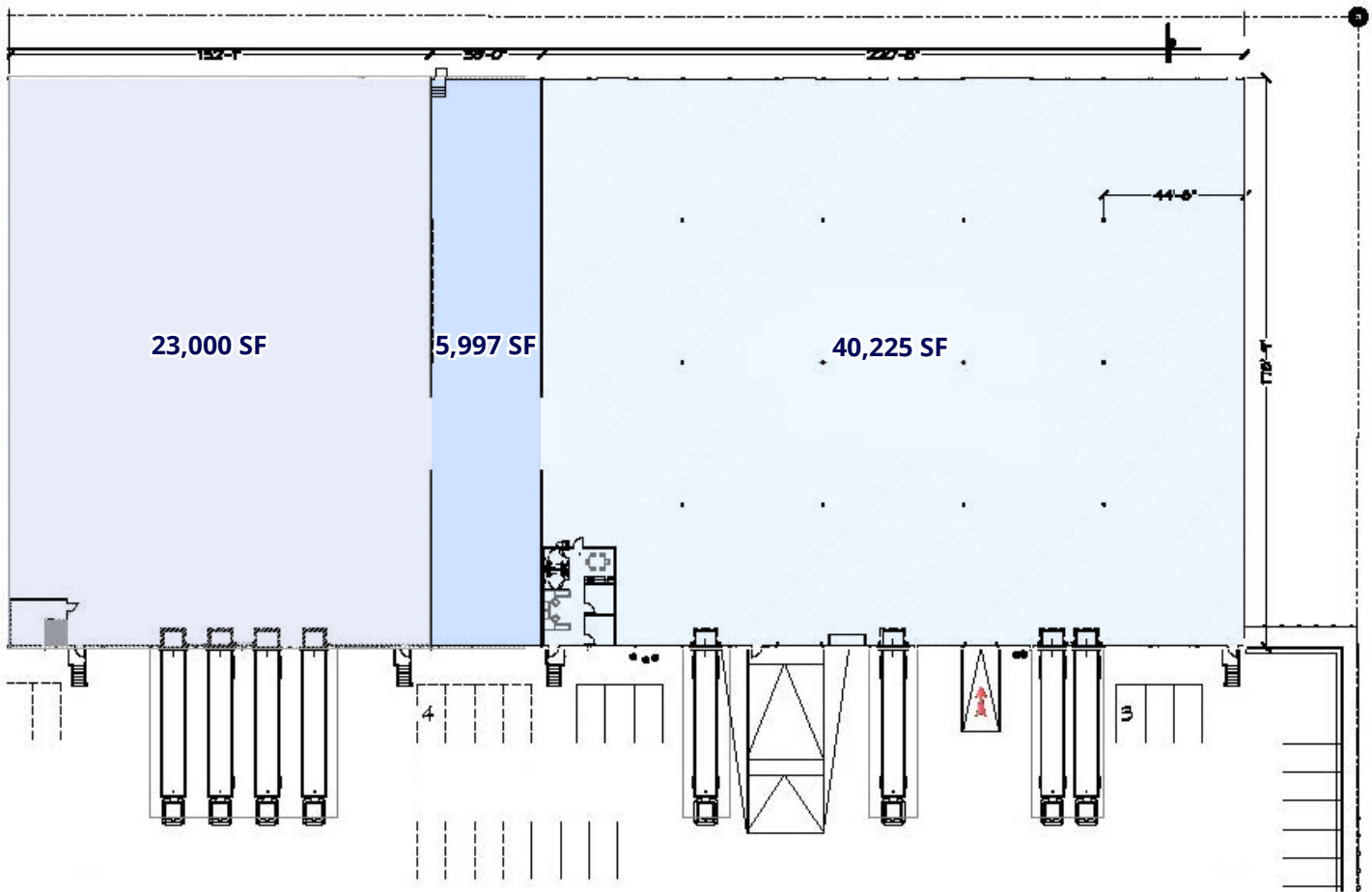
101 South Hanley Road
Suite 1400
St. Louis, MO 63105
+1 314 863 4447
colliers.com/stlouis

69,422 SF Industrial Distribution Space

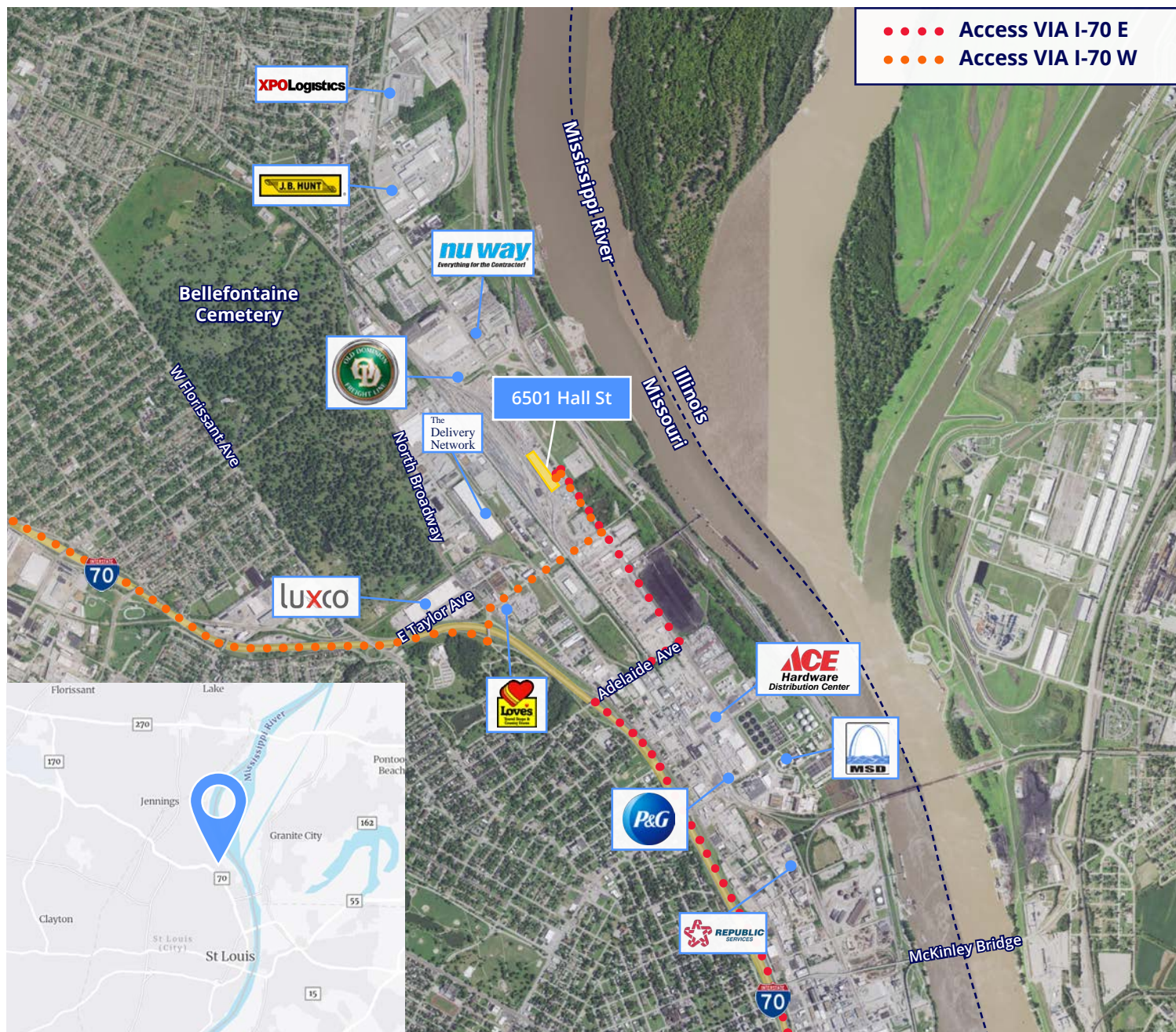
Highlights

- Total Building Size: 163,490 SF
- Total Available: 69,422 SF end cap space
- Available September 1, 2025
- Flexible Options: 23,200 SF - 69,422 SF
- Approximately 725 SF office
- Eight (9' x 10') dock-high loading docks
- One (14' x 12') drive-in door
- 44' x 44' column spacing
- 26' - 27' clear height
- Yard Space
 - Up to 40 trailer drops available
 - Possible fenced outside storage
- Rail service available
- Easy access to Interstate 70

FLOOR PLAN



LOCATION



CONTACT US

Daniel Bamberger, SIOR

Executive Vice President
+1 314 584 6226
daniel.bamberger@colliers.com

Joseph Hill, CCIM, SIOR

Executive Vice President
+1 314 584 6213
joseph.hill@colliers.com

Colliers

101 South Hanley Road
Suite 1400
St. Louis, MO 63105
+1 314 863 4447
colliers.com/stlouis

