

TURNKEY PROFESSIONAL OFFICE CONDOS

9310 Old Kings Rd Units 501-503 | \$695,000



Courtney Smith
(786) 587-8702
Courtney@welchteam.com

Ryan Cleary
(352) 270-4132
Ryan@welchteam.com

Scan to view online



301 Kingsley Lake Dr. Suite #502 St. Augustine, FL 32092
904-712-3304 | Commercial@welchteam.com

PROPERTY OVERVIEW

9310 Old Kings Rd Units 501-503



Located at 9310 Old Kings Rd Units 501-503 in Jacksonville, this 3,561 SF fully built-out professional office suite offers a highly functional layout ideal for a variety of business uses. The space includes multiple private offices and conference rooms, three bathrooms, a recently updated and beautifully renovated kitchen and breakroom, and a common work area, creating an efficient and professional work environment.

PROPERTY OVERVIEW

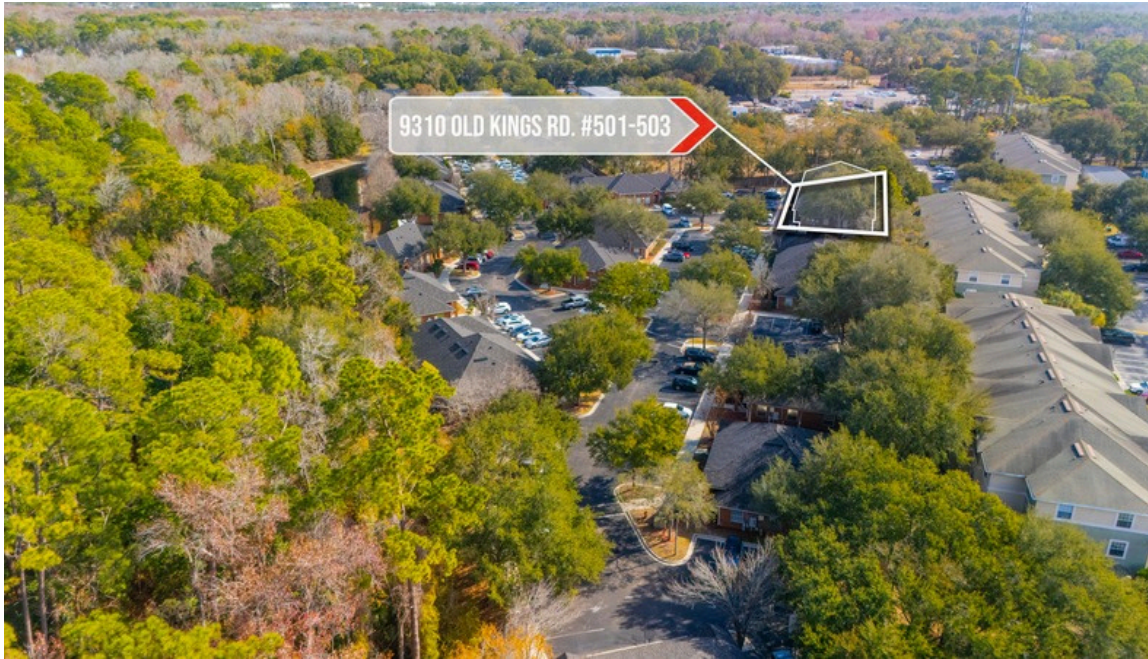
9310 Old Kings Rd Units 501-503

The property offers quick access to I-95, US-1 (Philips Highway), Baymeadows Road, and Sunbeam Road, ensuring excellent regional connectivity. Within a 5-mile radius, users benefit from strong retail amenities including Brierwood Village, neighborhood shopping centers, restaurants, services, and The Avenues Mall. Situated in an established office park with ample parking, this location combines convenience, accessibility, and a professional setting ideal for growing businesses.



PROPERTY PHOTOS

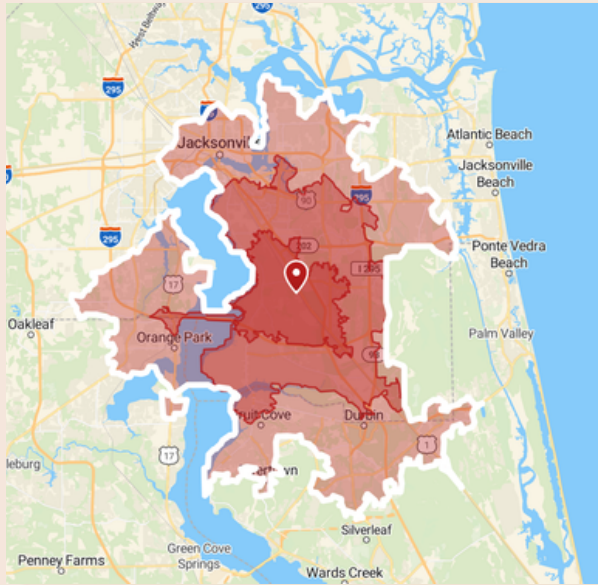
9310 Old Kings Rd Units 501-503



BENCHMARK DEMOGRAPHICS

9310 Old Kings Rd, Jacksonville, Florida, 32219

Drive time of 5 mins, 10 mins, & 15 mins



Based on ideas by Gary M. Ralston, CCIM, SIOR, CPM, CRE, CLS, CDP, CRX, FRICS

Source: This infographic contains data provided by Esri (2025, 2030), Esri-Data Axle (2025)

THE CCIM INSTITUTE



AGE SEGMENTS	DRIVE TIME			GEOGRAPHY			
	5 mins	10 mins	15 mins	Counties Duval County	CBSAs Jacksonville, FL Metropolitan Statistical Area	States Florida	USA
0 - 4	5.78%	5.89%	6.31%	5.69%	5.44%	4.69%	5.39%
5 - 9	6.11%	6.26%	6.53%	5.93%	5.86%	5.03%	5.75%
10 - 14	6.25%	6.55%	6.37%	5.73%	6.04%	5.34%	5.98%
15 - 19	6.68%	6.49%	6.72%	6.05%	6.22%	5.84%	6.47%
20 - 34	19.32%	18.06%	19.40%	21.29%	19.22%	18.43%	20.33%
35 - 54	25.07%	24.26%	24.17%	25.70%	25.63%	24.41%	25.20%
55 - 74	23.83%	24.05%	23.31%	22.41%	23.50%	25.55%	22.82%
75+	7.03%	8.45%	7.23%	7.24%	8.09%	10.74%	8.05%
HOUSEHOLD INCOME							
<\$15,000	9.2%	13.9%	14.9%	9.8%	8.1%	8.0%	8.3%
\$15,000-\$24,999	8.2%	7.2%	8.2%	5.5%	5.0%	5.8%	5.9%
\$25,000-\$34,999	9.4%	8.1%	9.5%	6.4%	5.8%	6.7%	6.3%
\$35,000-\$49,999	10.8%	10.4%	12.7%	11.0%	9.8%	10.5%	9.8%
\$50,000-\$74,999	16.8%	22.1%	20.1%	17.8%	16.5%	16.9%	15.6%
\$75,000-\$99,999	18.4%	12.4%	11.5%	12.8%	12.8%	12.9%	12.5%
\$100,000-\$149,999	20.5%	15.0%	14.4%	18.9%	19.6%	18.4%	17.8%
\$150,000-\$199,999	4.6%	5.9%	4.8%	7.5%	9.3%	8.7%	9.8%
\$200,000+	2.0%	5.0%	4.0%	10.3%	13.0%	12.1%	14.0%
KEY FACTS							
Population	6,657	54,548	186,289	1,054,465	1,764,628	23,027,836	339,887,819
Daytime Population	5,511	48,233	187,027	1,140,746	1,765,462	22,846,618	338,218,372
Employees	2,824	23,417	80,901	525,747	841,514	10,832,721	167,630,539
Households	2,453	20,532	72,638	431,039	699,626	9,263,074	132,422,916
Average HH Size	2.70	2.63	2.53	2.39	2.47	2.43	2.50
Median Age	39.7	40.5	38.6	38.7	40.4	43.6	39.6
HOUSING FACTS							
Median Home Value	286,490	261,673	236,124	355,630	395,594	416,969	370,578
Owner Occupied %	73.3%	70.8%	60.3%	58.2%	66.7%	67.2%	64.2%
Renter Occupied %	26.7%	29.2%	39.8%	41.8%	33.3%	32.8%	35.8%
Total Housing Units	2,744	22,290	79,980	468,453	767,323	10,635,372	146,800,552
INCOME FACTS							
Median HH Income	\$69,072	\$61,113	\$55,264	\$74,128	\$82,649	\$78,205	\$81,624
Per Capita Income	\$28,078	\$29,895	\$28,346	\$41,767	\$45,252	\$44,891	\$45,360
Median Net Worth	\$165,231	\$154,313	\$95,108	\$153,805	\$249,654	\$253,219	\$228,144

LOCATION OVERVIEW

9310 Old Kings Rd Units 501-503



Courtney Smith
(786) 587-8702
Courtney@welchteam.com

Ryan Cleary
(352) 270-4132
Ryan@welchteam.com

