

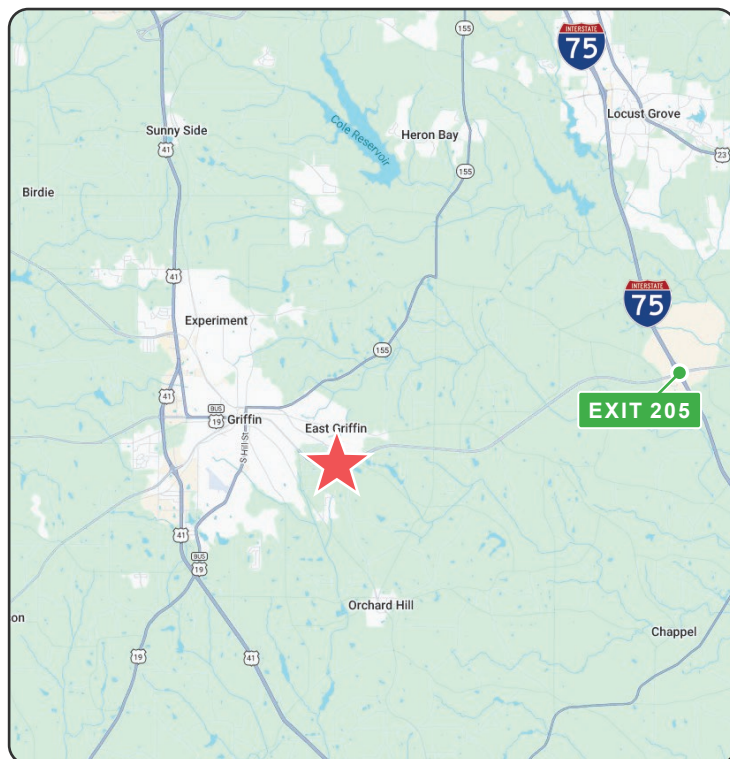
FOR SALE

100 HUDSON INDUSTRIAL DRIVE, GRIFFIN, GA 30224



PROPERTY HIGHLIGHTS

- ±9,065 SF Industrial Building
- ±3,500 SF Office/Production Area
- ±1.7 Acre Lot
- Office Area Includes: Two (2) Private Offices, Kitchenette, Two (2) Restrooms
- Production Room
- 24' Max Clear Height
- Heavy Power
- Side Load Configuration
- One (1) Dock-High Door
- One (1) Drive-In Door
- Built in 2006
- ±0.5 mi to SR-16 (Arthur K Bolton Pkwy)
- ±9 mi to I-75 (Exit 205)
- Spalding County Municipality
- Parcel 221 03008D



All information contained herein is believed to be accurate but is not warranted. This offer is subject to errors, omissions, prior sale or withdrawal.



Hughes Commercial Real Estate, Inc.
8215 Roswell Road, Building 700
Atlanta, GA 30350
770-559-1099 | hughes-cre.com

Elliott Stroud | 912-580-1617 | elliott@hughes-cre.com

Mason Marsteller | 404-790-9615 | mason@hughes-cre.com

FOR SALE

100 HUDSON INDUSTRIAL DRIVE, GRIFFIN, GA 30224

PHOTOS



All information contained herein is believed to be accurate but is not warranted. This offer is subject to errors, omissions, prior sale or withdrawal.



Hughes Commercial Real Estate, Inc.
8215 Roswell Road, Building 700
Atlanta, GA 30350
770-559-1099 | hughes-cre.com

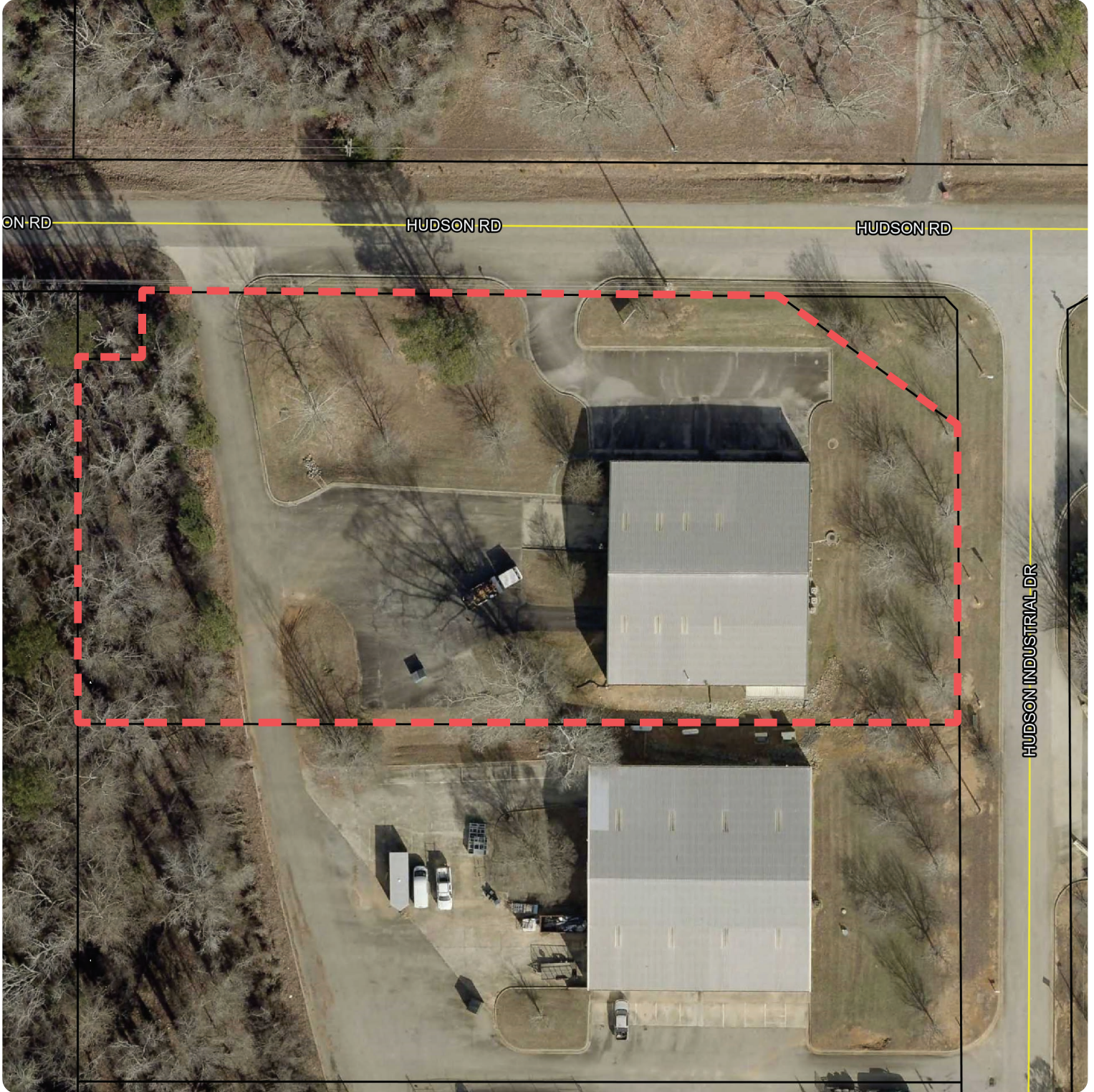
Elliott Stroud | 912-580-1617 | elliott@hughes-cre.com

Mason Marsteller | 404-790-9615 | mason@hughes-cre.com

FOR SALE

100 HUDSON INDUSTRIAL DRIVE, GRIFFIN, GA 30224

AERIAL VIEW



All information contained herein is believed to be accurate but is not warranted. This offer is subject to errors, omissions, prior sale or withdrawal.



Hughes Commercial Real Estate, Inc.
8215 Roswell Road, Building 700
Atlanta, GA 30350
770-559-1099 | hughes-cre.com

Elliott Stroud | 912-580-1617 | elliott@hughes-cre.com

Mason Marsteller | 404-790-9615 | mason@hughes-cre.com