

2020 FOREST AVENUE

SAN JOSE, CA 95128



HIGHLIGHTS

- Great Central San Jose Location
- Easy Freeway (280/880/17) Accessibility
- Close to Santana Row and Westfield Valley Fair Mall
- Close Proximity to O'Connor Hospital

AVAILABLE

- **Suite 5:** ±832 RSF
- **Suite 7:** ±1,794 RSF

LEASE RATE

- Call Broker for Lease Rate



HealthMedRealty

260 Los Gatos-Saratoga Rd., Los Gatos, CA 95030
Lic. 01902032 | 408.217.6000
www.healthmedrealty.com

No warranty or representation, express or implied is made as to the accuracy of the information contained herein, and the same is submitted subject to errors, omissions, changes of price, rental or other conditions, withdrawal without notice.

For Further Information, Please Contact:

Eric Yeung

☎ 408-457-8806
✉ ericy@healthmedrealty.com
📄 Lic. 01937705

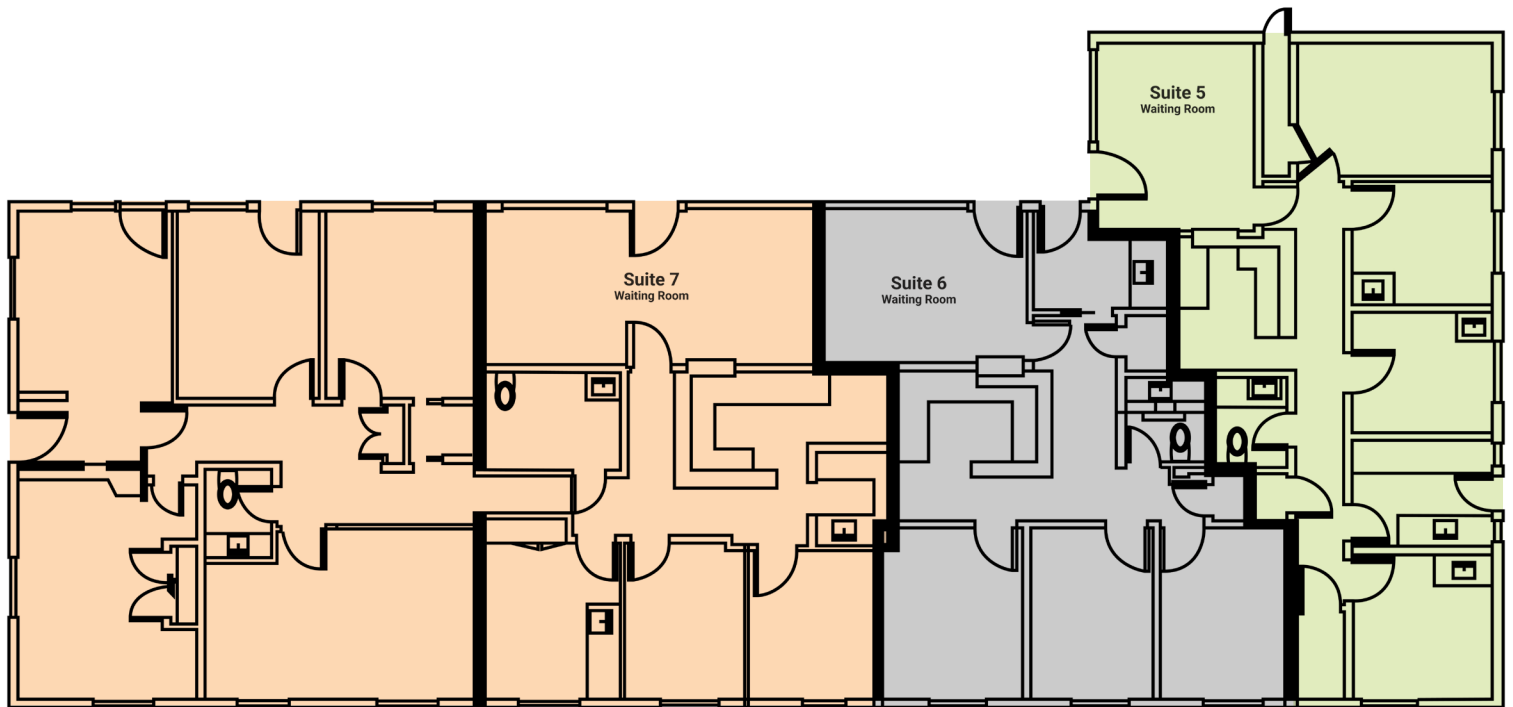


2020 FOREST AVENUE

SAN JOSE, CA 95128

FLOOR PLAN

- **Suite 5:** ±832 RSF - Available
- **Suite 7:** ±1,794 RSF - Available



Drawing not to scale



HealthMedRealty

260 Los Gatos-Saratoga Rd., Los Gatos, CA 95030
Lic. 01902032 | 408.217.6000
www.healthmedrealty.com

No warranty or representation, express or implied is made as to the accuracy of the information contained herein, and the same is submitted subject to errors, omissions, changes of price, rental or other conditions, withdrawal without notice.

For Further Information, Please Contact:

Eric Yeung

☎ **408-457-8806**

✉ ericy@healthmedrealty.com

📄 Lic. 01937705

