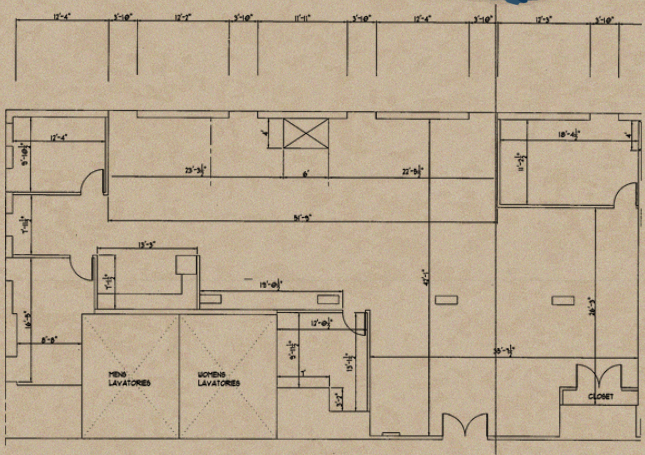


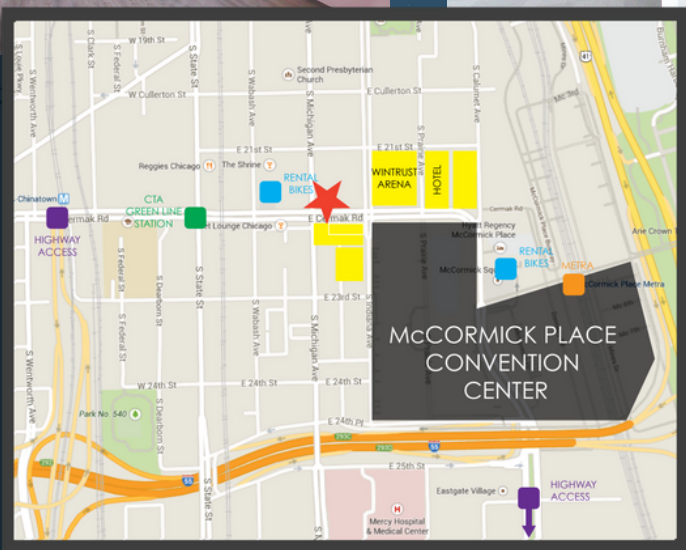
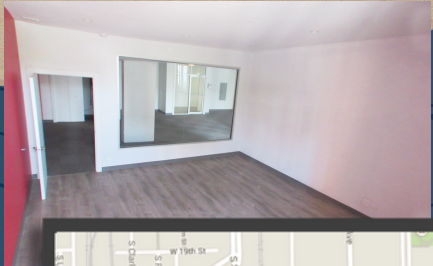
2210 S MICHIGAN



**SOUTH LOOP
OFFICE SPACE FOR LEASE**



2,994 SF



2210 S Michigan is a mixed-use building with ground-level retail and second-floor office space. Its location is second to none, with proximate access to Wintrust Arena and McCormick Place. The Green and Red line trains are just a few short blocks away, and commuters will appreciate the close proximity to the highway.

**JONATHAN ZIMMERMAN WILLARDJONES.COM
JZIMMERMAN@WILLARDJONES.COM 312.263.8787**

