



# 3916 Tradeport, Building 1000, Atlanta, GA 30354

## A Superior Location.

Atlanta Tradeport is a master-planned business park strategically located near the intersection of Interstate 75 and Interstate 285, minutes from Atlanta's Hartsfield Jackson International Airport and downtown Atlanta. Building 1000 is also located within Atlanta Tradeport's Foreign Trade Zone, a federally-designated site created to help businesses remain competitive in a global marketplace. With lower duties, reduced processing fees and quicker movement of goods from the port, this property is ideal for businesses seeking to reduce the cost of doing business while increasing supply chain efficiencies.

**Located in Foreign Trade Zone**

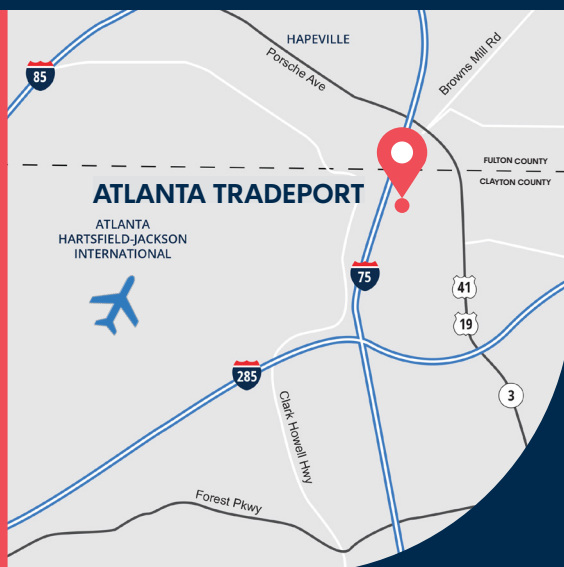
**Close proximity to airport**

**MARTA-accessible**

**Immediate access to I-75**

**Master-planned business park**

**Clayton County**



## Specifications

**9,287 sq. ft.**  
AVAILABLE

**2,475 sq. ft.**  
OFFICE AREA

**53,016 sq. ft.**  
BUILDING SIZE

**18'**  
CLEAR HEIGHT

**40' x 40'**  
COLUMN SPACING

**5 DH**  
DOCK DOORS

**1 DI**  
DRIVE-IN DOORS

**2.5 / 1,000**  
AUTO PARKING RATIO

**LED**  
LIGHTING

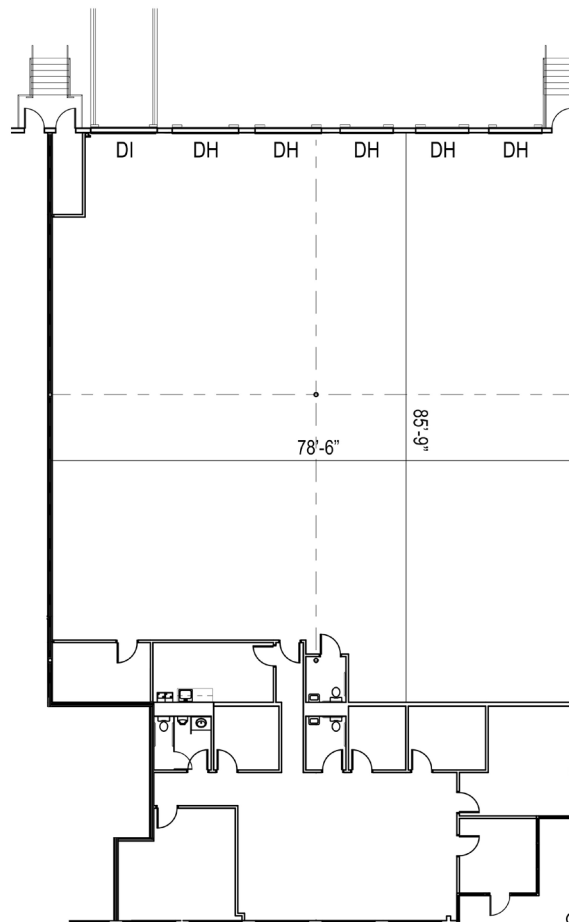
**WET**  
FIRE SPRINKLERS



## SUITE 1001

Office	2,475 SF
Warehouse	6,812 SF
<hr/>	
TOTAL	9,287 SF
Dock-High Doors	5 DH
Drive-In Door	1 DI

*This is a conceptual plan. It is based on preliminary information which is not fully verified and may be incomplete. It is meant as a comparative aid in examining alternate development strategies and any quantities indicated are subject to revision as more reliable information becomes available.*



## Contacts



**Adam Richards**  
D 404.760.7181  
arichards@reliant-re.com  
Lic. 228320

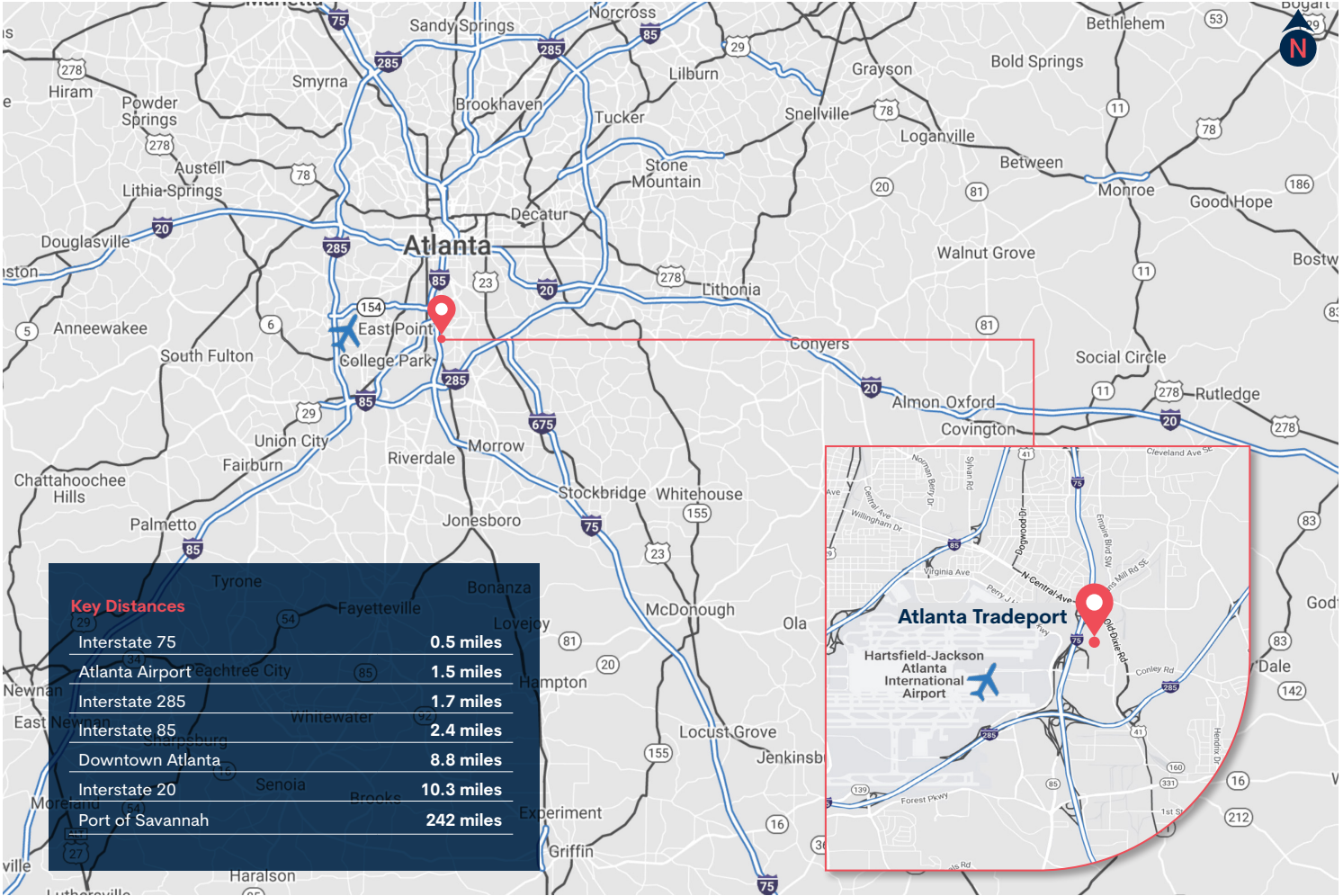
**Mike Weinberger**  
D 404.760.7183  
mweinberger@reliant-re.com  
Lic. 360808

**Celeste Land**  
D 404.418.4168  
celeste.land@brookfieldproperties.com





## Area Map & Key Distances



## Contacts



**Adam Richards**  
D 404.760.7181  
arichards@reliant-re.com  
Lic. 228320

**Mike Weinberger**  
D 404.760.7183  
mweinberger@reliant-re.com  
Lic. 360808

**Celeste Land**  
D 404.418.4168  
celeste.land@brookfieldproperties.com