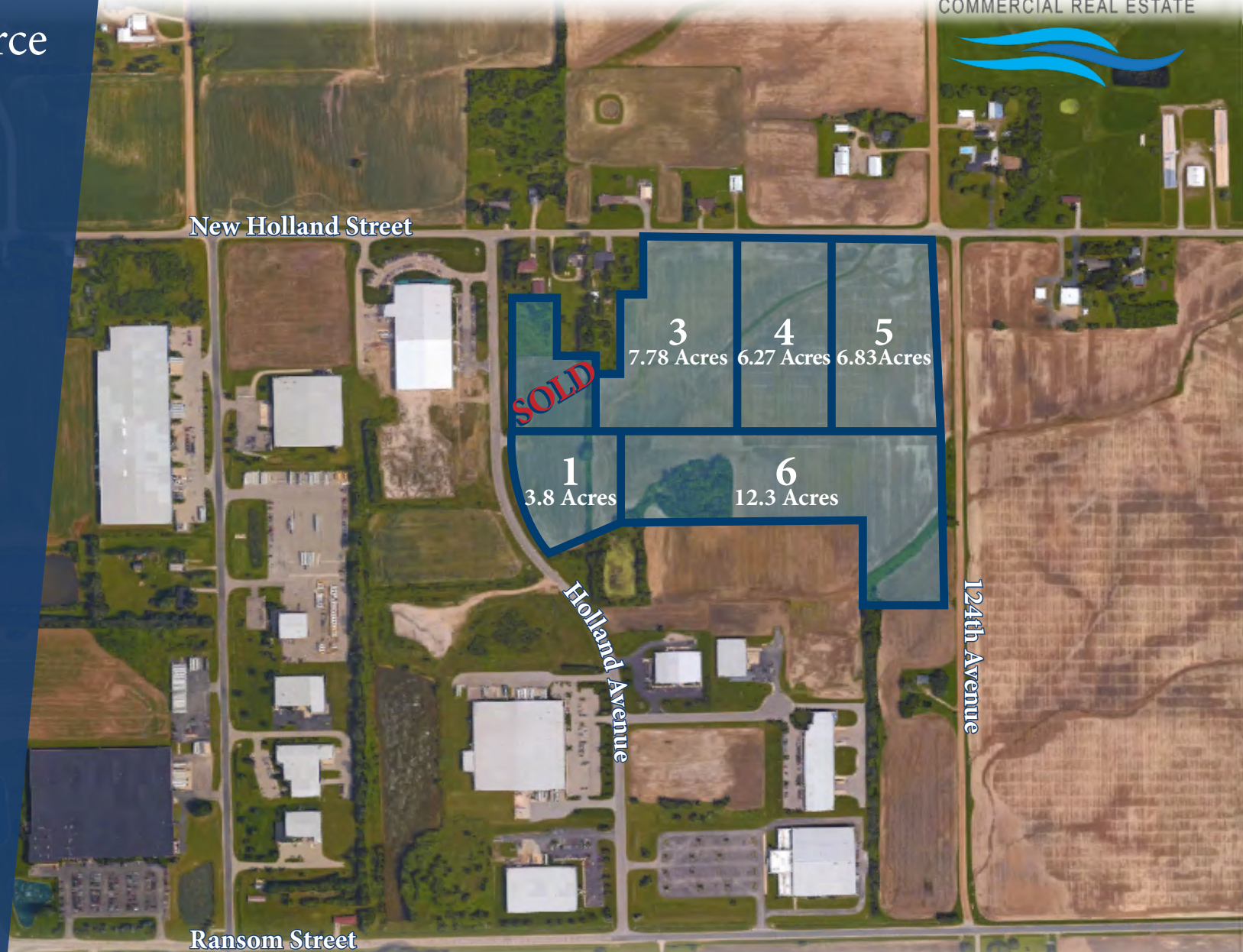


FOR SALE

Holland Commerce Park

Holland, MI 49424

Looking for one parcel, or many, this location is ideal for your industrial needs. This fast growing area east of US-31 on Holland's north side is perfectly situated for your business needs. Options of 3.8 - 40.78 acres with easy access to US-31, near Downtown Holland and Zeeland.



INDUSTRIAL VACANT LAND

3.8 - 40.78 ACRES

JASON DEWITT

- DIR +1 616 355 3156
- MOB +1 616 836 2856
- JASON@LAKESHORECOMMERCIAL.COM

www.LakeshoreCommercial.com
44 East 8th Street, Suite 510 | Holland, MI 49423 | 616.394.4500

SALE INFORMATION

<u>Parcel</u>	<u>APN</u>	<u>Acres</u>	<u>Price per Acre</u>	<u>Sale Price</u>
1	70-16-04-100-055	3.8	\$55,000	\$209,000
3	70-16-04-100-052	7.78	\$50,000	\$389,000
4	70-16-04-100-053	6.27	\$50,000	\$313,500
5	70-16-04-100-054	6.83	\$45,000	\$307,350
6	70-16-04-100-056	12.3	\$30,000	\$369,000
3-5	70-16-04-100-052,-053,-054	20.88	\$48,364	\$1,108,850
3-6	70-16-04-100-052,-053,-054,-056	36.98	\$37,286	\$1,378,850
1-6	70-16-04-100-052,-053,-054,-055,-056	40.78	\$37,000	\$1,508,860

LOCATION

Directions:

East of US-31, between New Holland Street and Ransom Street

Proximity:

US-31 - .5 Miles

I-196 - 5 miles

M-6 - 17 Miles

Downtown Holland - 4 Miles

Grand Rapids - 30 Miles

UTILITY SOURCE

Electric: Holland Board of Public Works

Telephone: Choice

Natural Gas: SEMCO

Sanitary Sewer: Holland Charter Township

Storm Sewer: Ottawa County Drain Commission/Road Commission

Water: Holland Charter Township

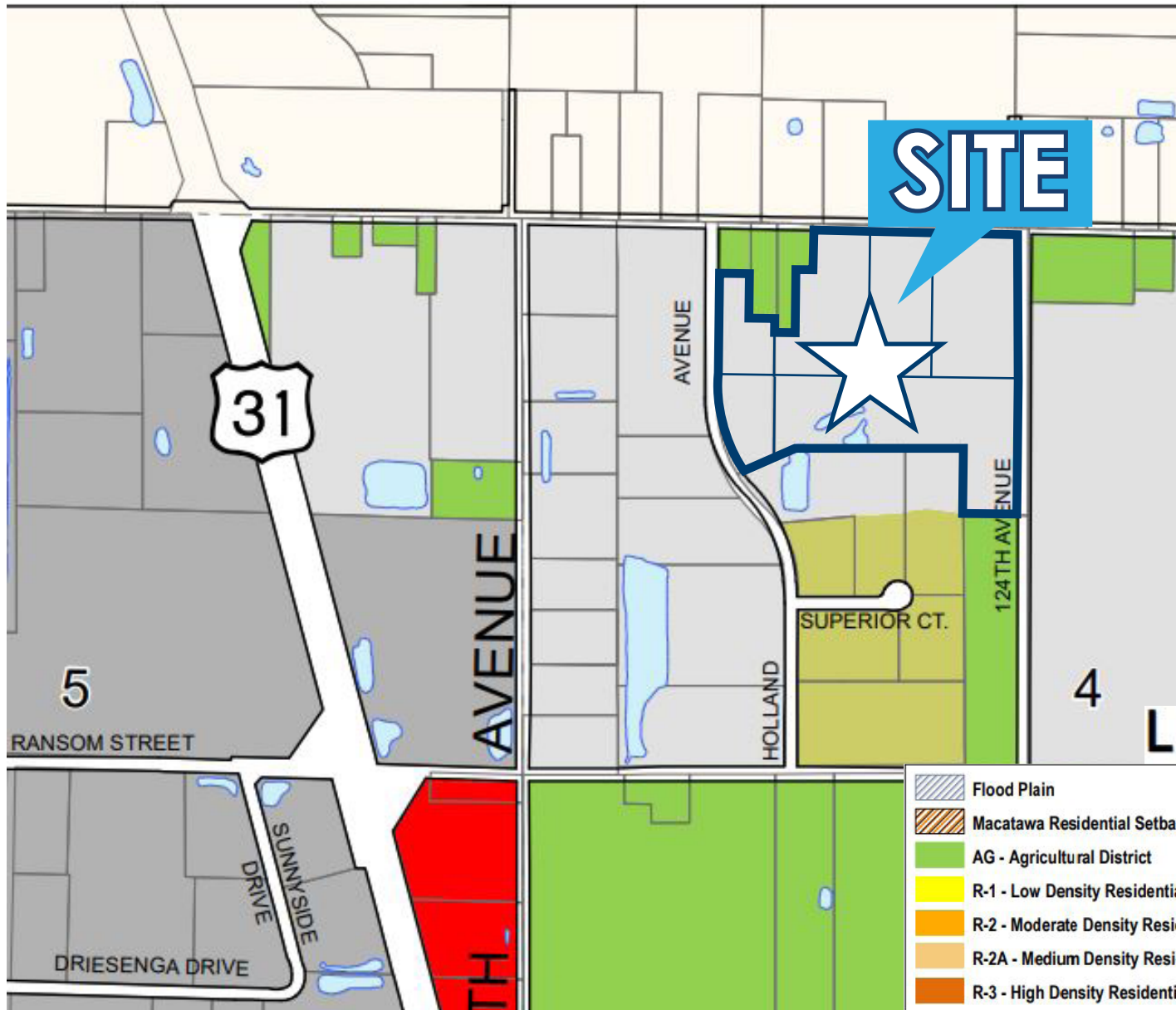
LAND HIGHLIGHTS

- All front foot assessments paid
- Zoning I-1- Light Industrial District
- North and South entrances off Ransom Street and New Holland Street
- Paved all weather interior road with concrete curb and gutter
- Close proximity to US-31
- Close to local airports
- Building and use restriction to maintain quality and integrity of the park
- All utilities underground
- Municipal water and sewer installed
- 198 Tax Abatement District
- Parcels are ready to build

ZONING MAP

View Zoning Map at:

https://www.hct.holland.mi.us/images/stories/hollandcharter/Forms/HCT_Zoning_36x42_2024-01-01.pdf



Holland Charter Township
Ottawa County, Michigan

ZONING

January 1, 2024

Preis & Newhof
The City of Holland is pleased to have this
Holland Charter Township and Holland
Map for the City of Holland
2024

For more information on what is allowed in the Light Industrial District, click the link below to go to the Holland Charter Township Code of Ordinances
www.hct.holland.mi.us/code-of-ordinances

LEGEND

	Flood Plain		C-1 - Neighborhood Commercial District
	Macatawa Residential Setback Overlay		C-2 - Community Commercial District
	AG - Agricultural District		C-3 - Highway Commercial District
	R-1 - Low Density Residential District		O-S - Office and Service District
	R-2 - Moderate Density Residential District		I-1 - Light Industrial District
	R-2A - Medium Density Residential District		I-2 - General Industrial District
	R-3 - High Density Residential District		Planned Unit Development

MAP



YOUR PREMIER BROKER IN WEST MICHIGAN

Lakeshore Commercial Real Estate has over 100 years of experience in the industry. We have seen many changes and evolutions over the years, but our focus has always remained the same: to serve businesses in our community and help them achieve their success. We specialize in all aspects of commercial real estate, including sales, management, and leasing. We have a deep understanding of the local market and the unique needs of different businesses. We use our expertise to help our clients find the right property, negotiate the best deals, and manage their properties efficiently and effectively. We don't just have you covered on the Lakeshore. We have created excellent relationships with brokers outside of the Lakeshore area to ensure we are serving you best. We are committed to our clients and their success. We work closely with each client to understand their needs and goals, and we develop customized solutions to help them achieve those goals.



JASON DEWITT
PRINCIPAL

DIRECT (+1) 616-355-3156
CELL (+1) 616-836-2856
JASON@LAKESHORECOMMERCIAL.COM



TOM POSTMA
PRINCIPAL

DIRECT (+1) 616-355-3145
CELL (+1) 616-283-2411
TOM@LAKESHORECOMMERCIAL.COM



DREW DURHAM
PRINCIPAL

DIRECT (+1) 616-355-3148
CELL (+1) 616-566-2039
DREW@LAKESHORECOMMERCIAL.COM



KRIS DEPREE
PRINCIPAL

DIRECT (+1) 616-355-3141
CELL (+1) 616-212-5576
KRIS@LAKESHORECOMMERCIAL.COM