



Colliers

Accelerating success.



## Office for Lease

Lease Rate

**\$24.50/SF**

Full Service

406 W South Jordan Pkwy  
South Jordan, Utah

### Property Highlights

- 25,272 total RSF
  - Suite 300 - 12,636 RSF - Divisible
  - Suite 500 - 12,636 RSF - Divisible
- 5/1,000 parking ratio
- Tenant Improvements available
- Excellent freeway access
- Golf course views
- Central valley location
- Newly renovated lobbies

#### Contact:

**Doug Petty**, CCIM  
Vice President  
+1 801 947 8334  
doug.petty@colliers.com

#### Colliers

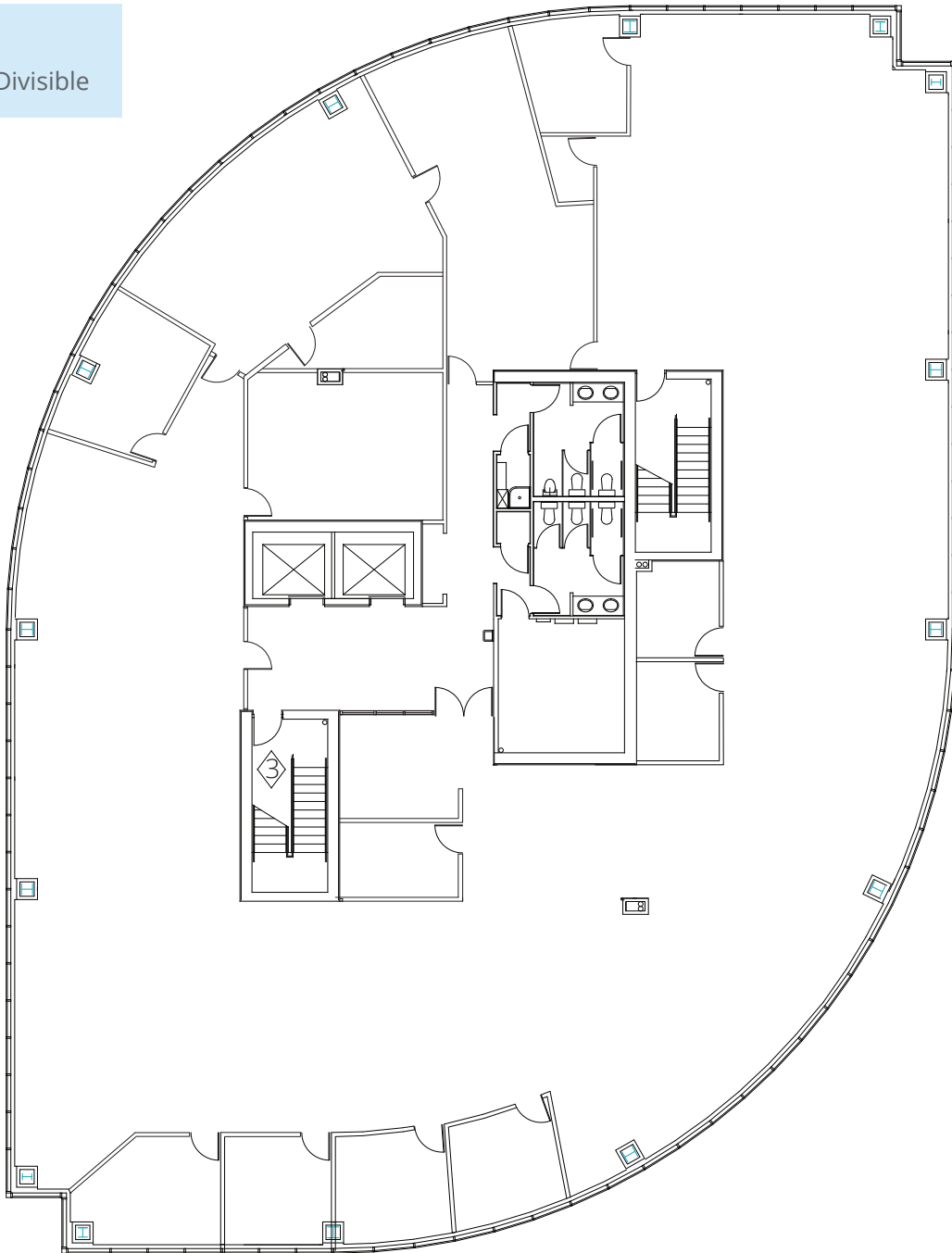
6440 S. Millrock Dr., Suite 500  
Salt Lake City, UT 84121  
Main: +1 801 947 8300  
colliers.com

Accelerating success.

# Floor Plan

## Floor 3

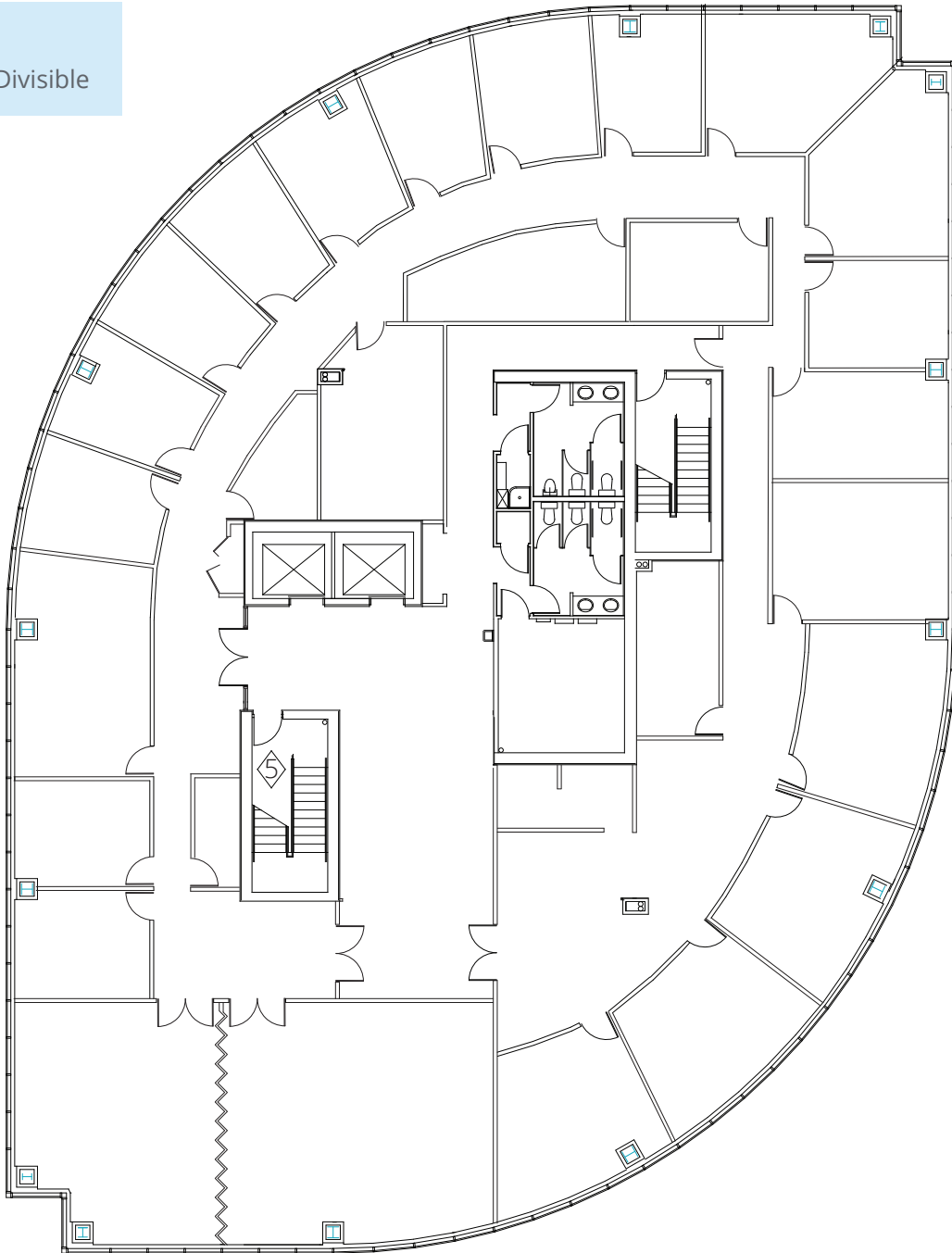
Suite 300  
12,636 RSF - Divisible



# Floor Plan

## Floor 5

Suite 500  
12,636 RSF - Divisible







#### Colliers

6440 S. Millrock Dr., Suite 500  
Salt Lake City, UT 84121  
Main: +1 801 947 8300  
colliers.com

**Doug Petty, ccim**  
Vice President  
+1 801 947 8334  
doug.petty@colliers.com

This document has been prepared by Colliers International for advertising and general information only. Colliers International makes no guarantees, representations or warranties of any kind, expressed or implied, regarding the information including, but not limited to, warranties of content, accuracy and reliability. Any interested party should undertake their own inquiries as to the accuracy of the information. Colliers International excludes unequivocally all inferred or implied terms, conditions and warranties arising out of this document and excludes all liability for loss and damages arising there from. This publication is the copyrighted property of Colliers International and/or its licensor(s). ©2024. All rights reserved.