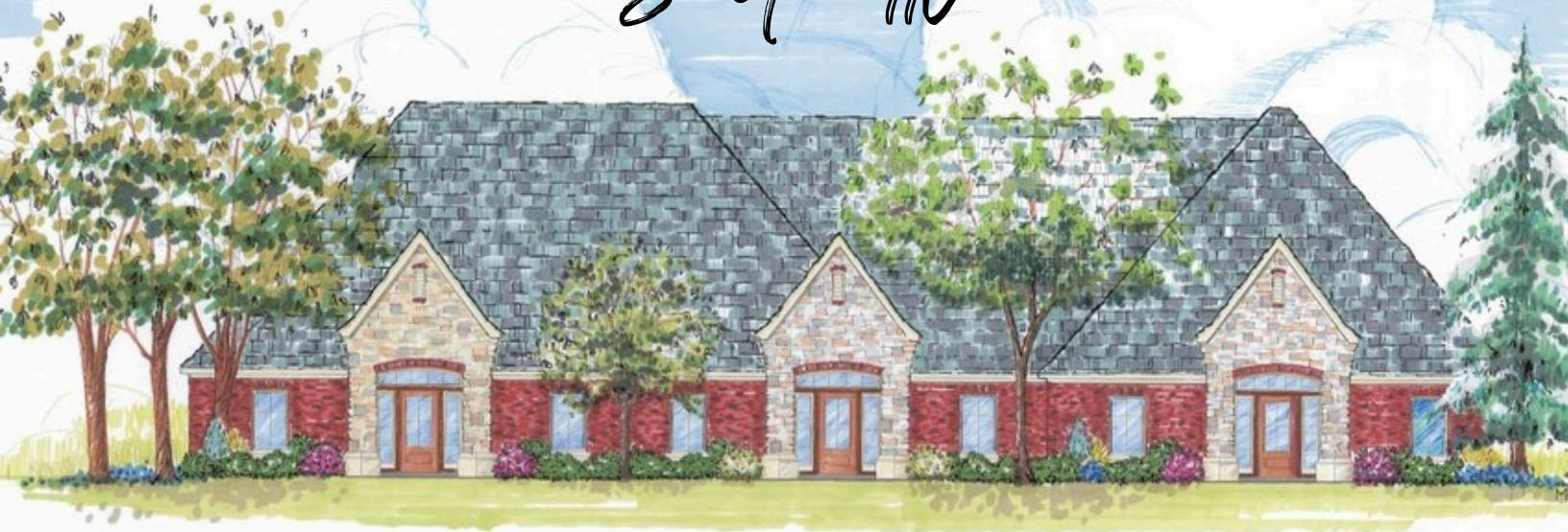


Covell Village

PROFESSIONAL PARK

*2600 Covell Village Drive
Suite 110*



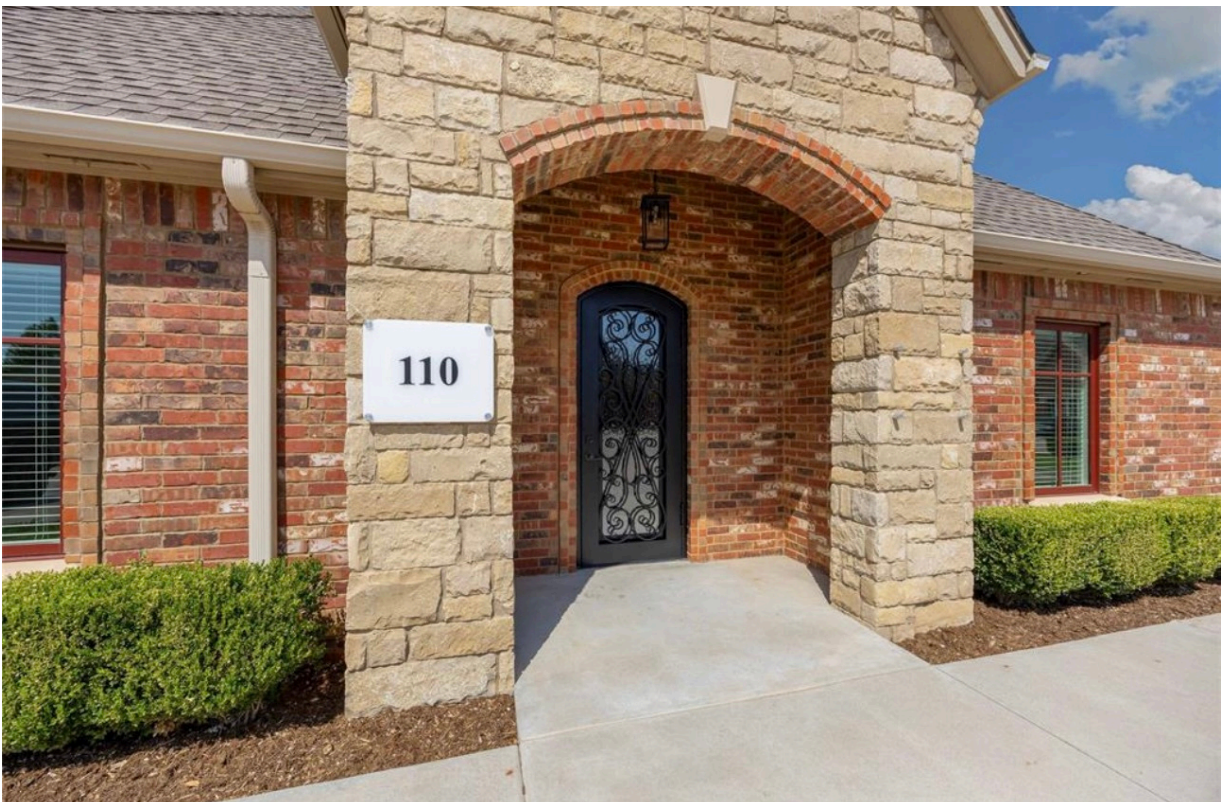
Gorgeous office space for lease. Beautiful finishes with four different offices, a conference room, a breakroom with a kitchenette, a receptionist area, and a restroom for a total of 1500 SF. Plenty of storage as well as pull up parking. This space is located in Covell Village Professional Office Park, a high-end beautiful office park located at Covell and Kelly in Edmond. Close to Uptown Grocery, Pepperoni Grill, Prime TFCU Bank, Covell Post Office, Garage Burgers, Hunny Bunny Biscuit Company, Liv Medical Spa, Mitch Park. You couldn't dream up a better location! .

- 46,000 +cars pass through the 4 way intersection of Kelly & Covell daily
- One of the highest ranking intersections in Edmond, OK for 24-hour daily average count
- Flourishing restaurants, coffee shops, and other small business neighbors

Covell Village

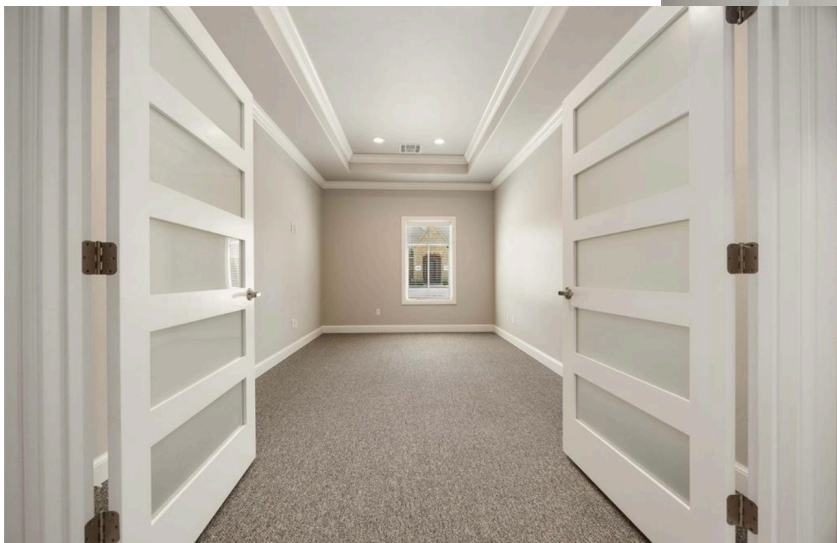
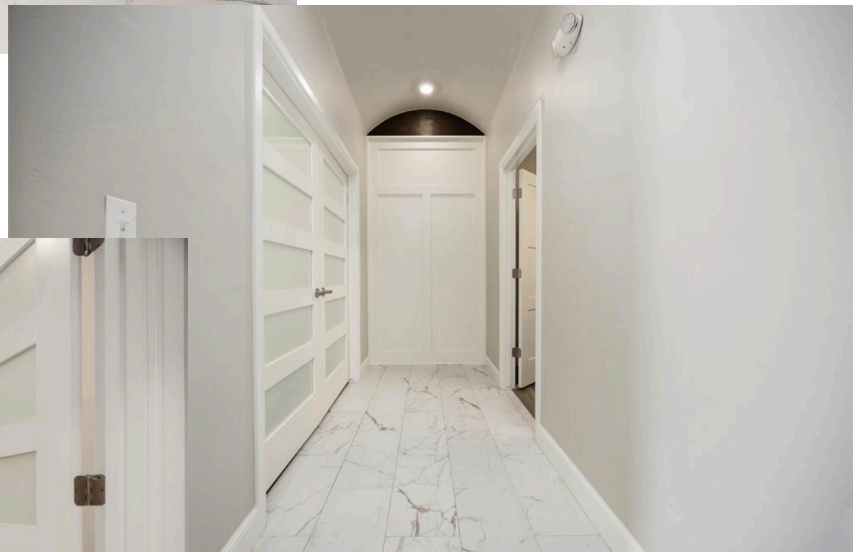
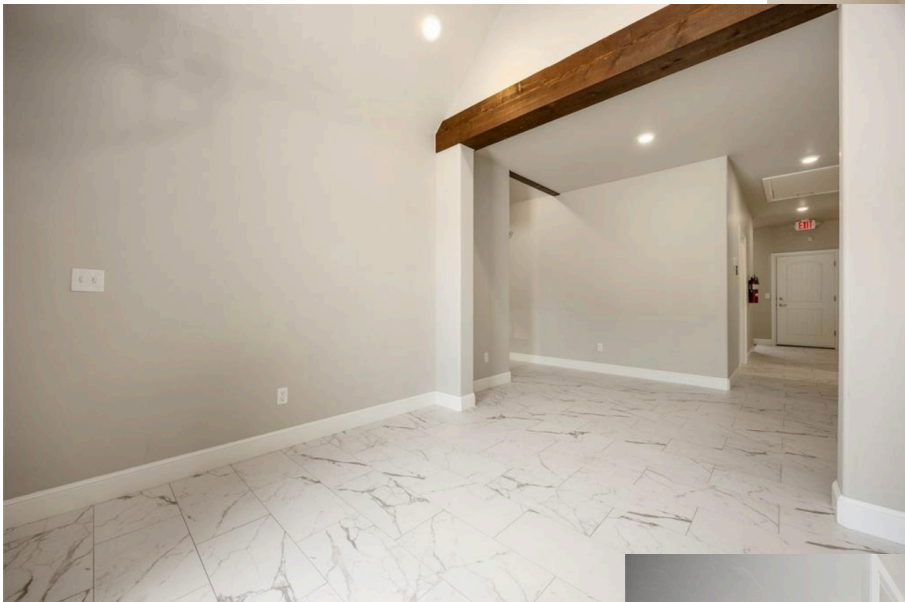
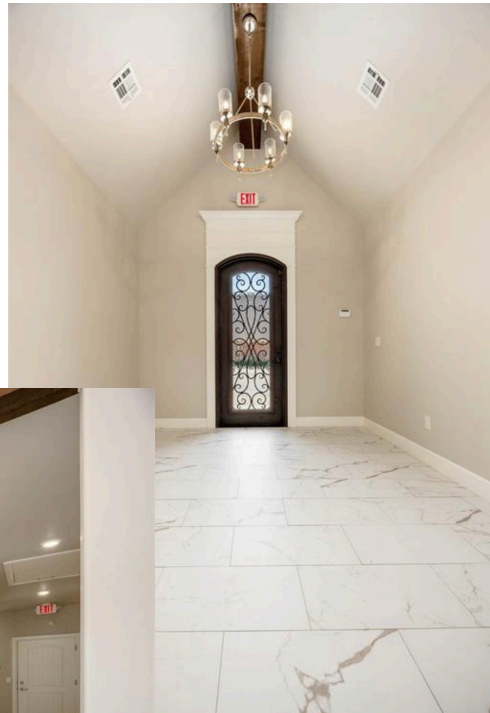
PROFESSIONAL PARK

- 1500 SF
- 4 Office Spaces
- Conference Room
- Breakroom With A Sink And Refrigerator Space
- High End Finishes
- Triple Net Lease, Minimum Three Year
- \$2950 Per Month
- \$1350 Quarterly CAM Charge Includes All Outdoor Maintenance And Outside Electric



Covell Village

PROFESSIONAL PARK

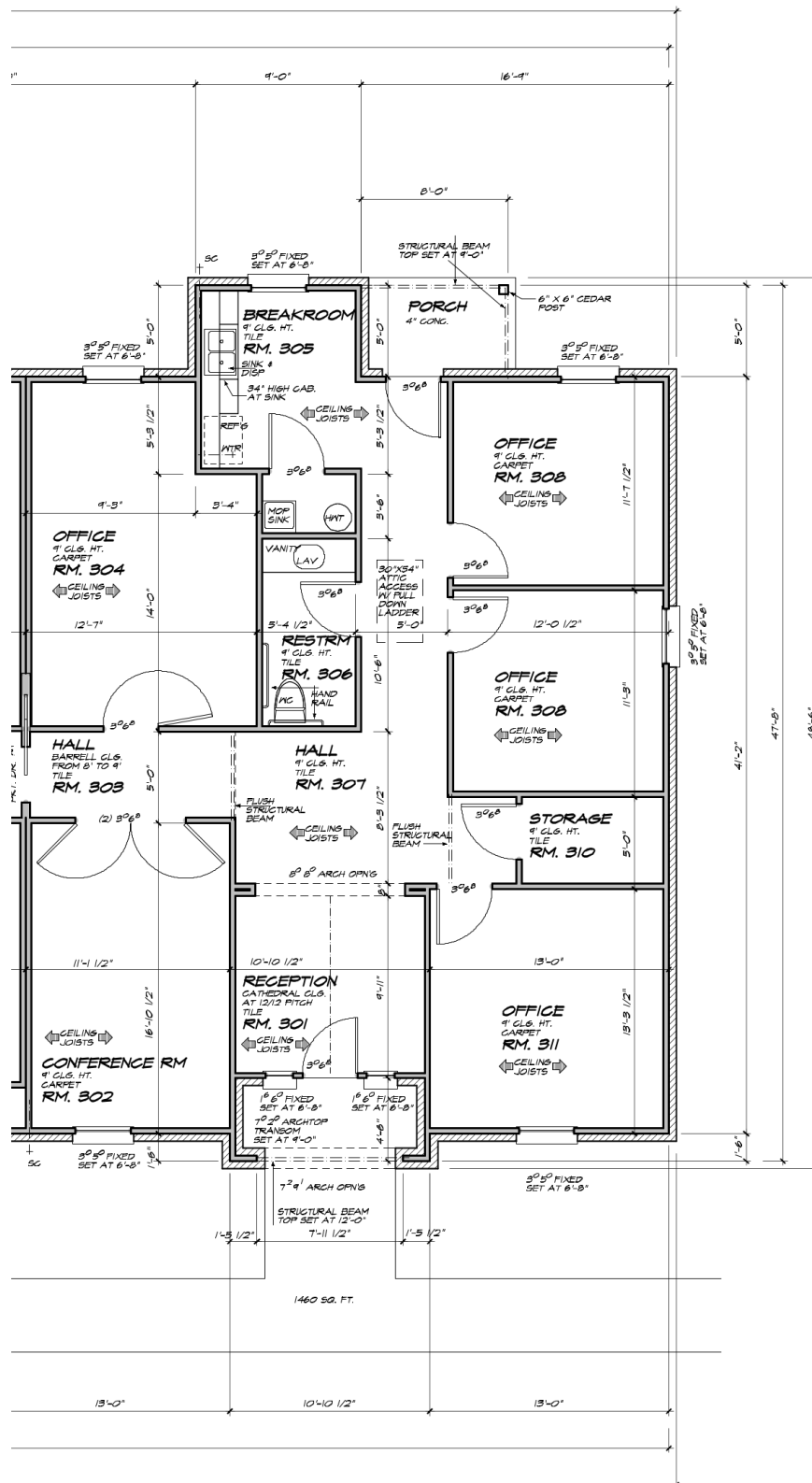


Covell Village

PROFESSIONAL PARK



PROFESSIONAL PARK



Connect With Me

Website Link



Instagram



Facebook




Michelle Johnson
REALTOR

OKC Metro - Tulsa Metro - Grand Lake Area - Shawnee



STETSON BENTLEY
REAL ESTATE

(405) 200-0822
3117 N. Sooner Rd, Suite 100
Edmond, OK 73034

(405) 905-9409

michelle.johnson@stetsonbentley.com

michellejohnsonre.com