



PORTLAND, OR

**CLOUD CITY REALTY**

FOR LEASE

## RETAIL

**8201 SE Powell Blvd  
Portland, OR 97266**

- Next to end suite with separate exit in rear
- Undergoing renovation
- High visibility signage options
- On Trimet Bus Lines
- Less than 1 mile to I-205 and Trimet SE Powell Station

**Busy intersection near  
Powell Street Station,  
by Jade District**

**~1,766 SF at \$24-28 SF / YR + NNN**

**POWELLHURST-GILBERT**



JJ HEWITT  
Commercial Broker  
503-502-0379  
jj@cloudcityrealty.com



### NEIGHBORING TENANTS

- 82 Powell Deli & Grocery
- Killer Banh Mi
- CaFung LLC
- Metro PCS
- Qing Qing Foot Spa
- Puddletown Organics

### CLOSE BUSINESSES & INSTITUTIONS

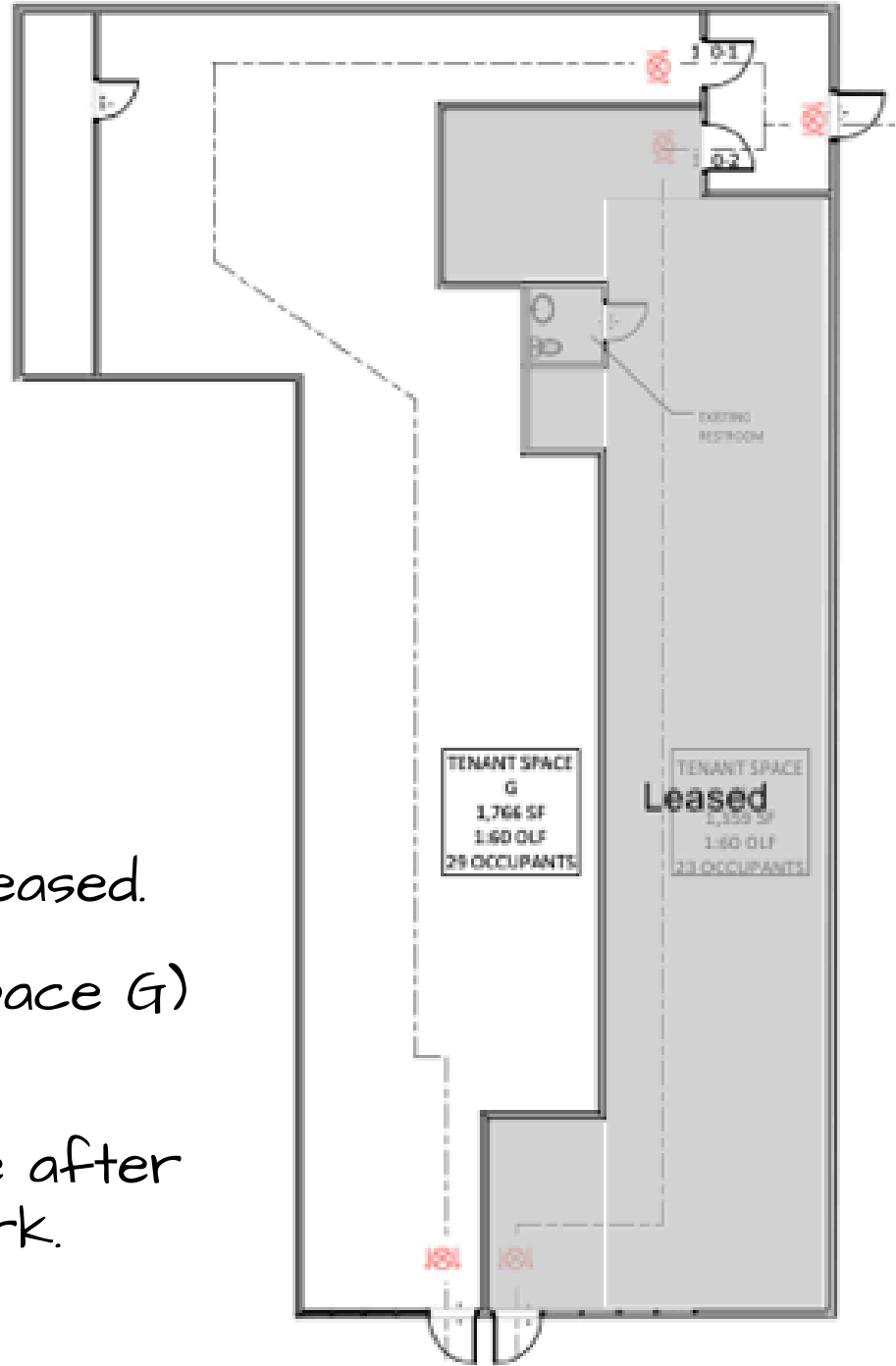
- PCC
- APANO
- Fubon
- Winco Foods
- Los Gorditos
- Kenny's Noodle House
- Best Baguette
- Numerous fast food restaurants
- Century Theatres



JJ HEWITT  
Commercial Broker  
503-502-0379  
jj@cloudcityrealty.com

# Floor Plan

- Right side has been leased.
- Left side (Tenant Space G) is available for lease.
- New photos to come after more renovation work.



# LOCATION HIGHLIGHTS

Cloud City Realty  
5901 NE Shaver St  
Portland, OR 97213  
www.cloudcityrealty.com  
971-339-1456

