



CREEK|CRE

RETAIL SPACE FOR LEASE

# 14201 N SANTA FE AVE

Edmond, OK 73013

**AJ TOLBERT**  
630.843.1989  
aj@creekcre.com

**ADEN STRUBLE**  
405.210.3910  
aden@creekcre.com

600 NE 4TH STREET, SUITE 100 | OKLAHOMA CITY, OK 73104-6231 | 405.510.0079 | CREEKCRE.COM

MAY 05, 2026

## PROPERTY SUMMARY



### PROPERTY DESCRIPTION

Santa Fe Shops is a modern neighborhood retail center featuring contemporary construction with dark brick columns, expansive storefront glass, and a clean flat roofline. The center offers strong street visibility and monument signage along North Santa Fe Avenue, with ample surface parking on all sides. A dual-facing layout provides traditional retail storefronts on the front elevation and overhead roll-up doors on the rear, making the center uniquely adaptable for a wide range of tenant types. The property offers convenient access to the John Kilpatrick Turnpike (I-344) and the Broadway Extension, connecting tenants and their customers to the greater OKC metro in minutes. Santa Fe Shops is situated along the high-traffic North Santa Fe Avenue corridor in Edmond, Oklahoma.

### PROPERTY HIGHLIGHTS

- Modern construction featuring storefront glass, dark brick columns, and a clean contemporary design
- Dual-facing layout with retail storefronts on the front and roll-up bay doors on the rear for maximum tenant flexibility
- Strong street visibility with monument signage and ample surface parking on all sides

### OFFERING SUMMARY

Lease Rate:	\$16-18 SF/yr (NNN)
Available SF:	1,074 - 6,098 SF
Lot Size:	78,887 SF
Building Size:	19,450 SF

DEMOGRAPHICS	1 MILE	3 MILES	5 MILES
Total Households	1,770	32,644	77,581
Total Population	4,896	74,658	184,882
Average HH Income	\$136,147	\$92,625	\$111,401

AJ TOLBERT  
630.843.1989  
aj@creekcre.com

ADEN STRUBLE  
405.210.3910  
aden@creekcre.com

14201 N SANTA FE AVE  
14201 N SANTA FE AVE | EDMOND, OK 73013

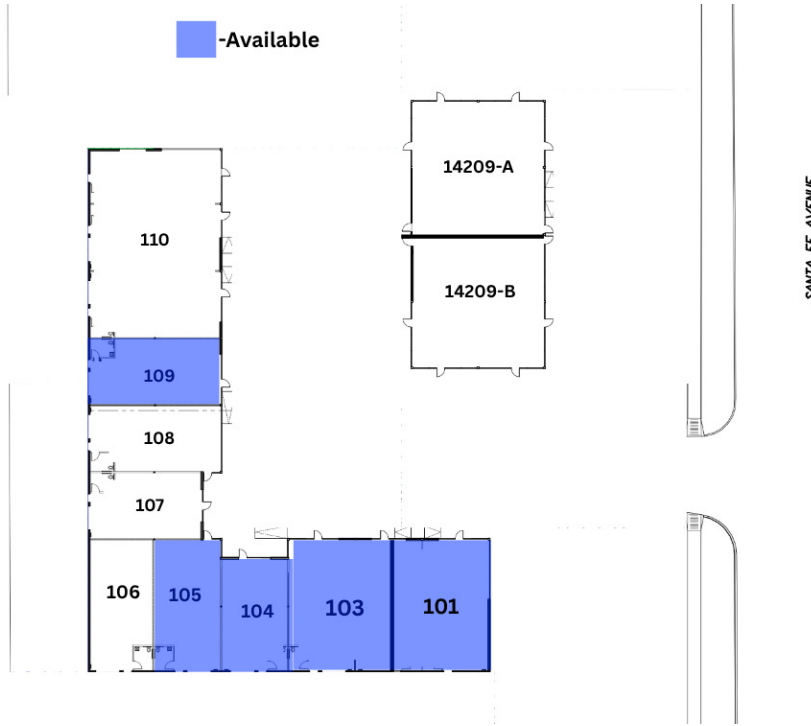
## ADDITIONAL PHOTOS



**AJ TOLBERT**  
630.843.1989  
aj@creekcre.com

**ADEN STRUBLE**  
405.210.3910  
aden@creekcre.com

## LEASE SPACES



### LEASE INFORMATION

Lease Type:	NNN
Total Space:	1,074 - 6,098 SF

Lease Term:	3-5 Years
Lease Rate:	\$16 - \$18 SF/yr

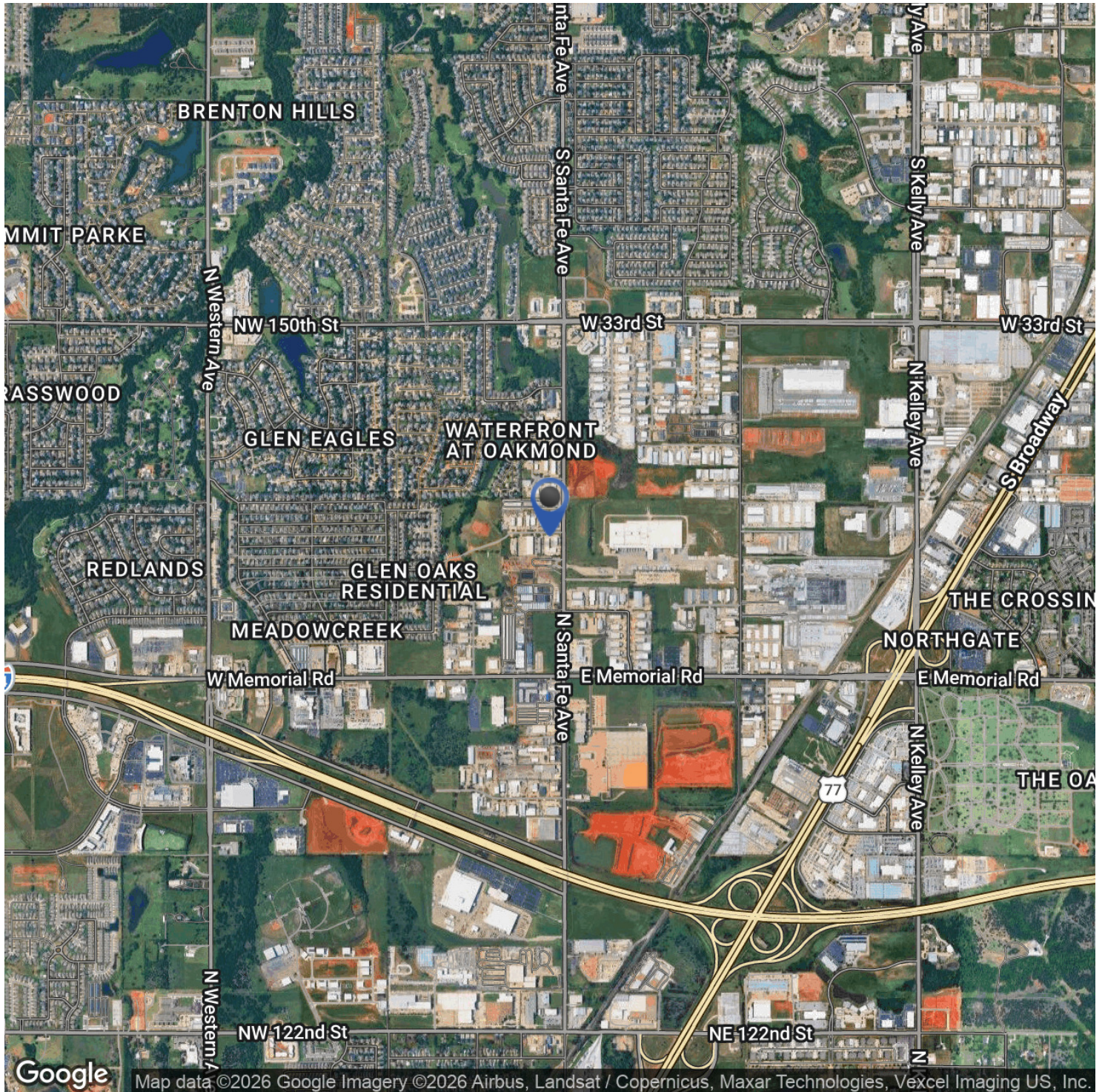
### AVAILABLE SPACES

SUITE	TENANT	SIZE (SF)	LEASE TYPE	LEASE RATE
101	Available	1,975 - 6,098 SF	NNN	\$18.00 SF/yr
103	Available	1,975 - 6,098 SF	NNN	\$16.00 SF/yr
104	Available	1,074 - 6,098 SF	NNN	\$16.00 SF/yr
105	Available	1,074 - 6,098 SF	NNN	\$16.00 SF/yr
109	Available	1,250 SF	NNN	\$16.00 SF/yr

AJ TOLBERT  
 630.843.1989  
 aj@creekcre.com

ADEN STRUBLE  
 405.210.3910  
 aden@creekcre.com

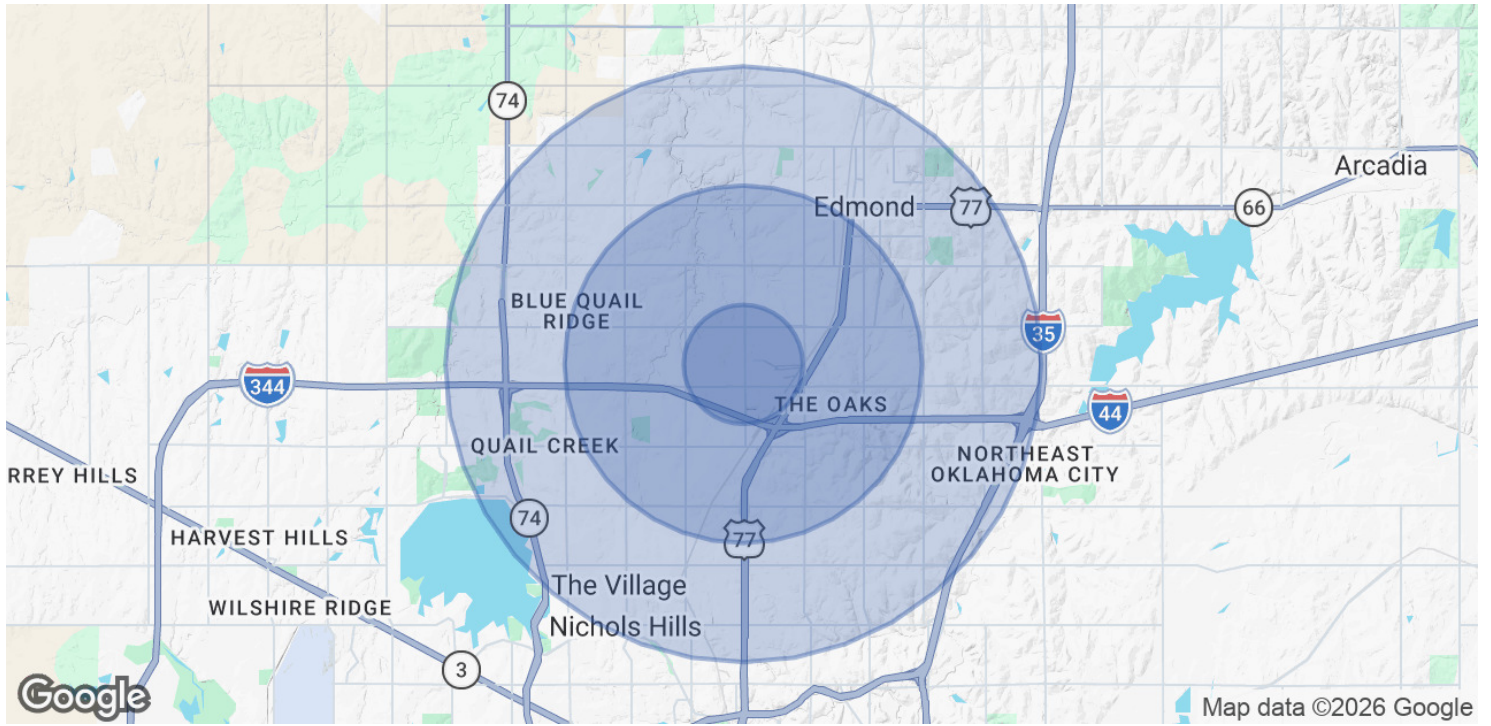
## LOCATION MAP



AJ TOLBERT  
630.843.1989  
aj@creekcre.com

ADEN STRUBLE  
405.210.3910  
aden@creekcre.com

## DEMOGRAPHICS MAP & REPORT



POPULATION	1 MILE	3 MILES	5 MILES
Total Population	4,896	74,658	184,882
Average Age	37.1	35.7	36.7
Average Age (Male)	35.6	33.7	35.5
Average Age (Female)	47.0	38.7	38.6

HOUSEHOLDS & INCOME	1 MILE	3 MILES	5 MILES
Total Households	1,770	32,644	77,581
# of Persons per HH	2.8	2.3	2.4
Average HH Income	\$136,147	\$92,625	\$111,401
Average House Value	\$312,719	\$246,161	\$315,460

2023 American Community Survey (ACS)

**AJ TOLBERT**  
 630.843.1989  
 aj@creekcre.com

**ADEN STRUBLE**  
 405.210.3910  
 aden@creekcre.com