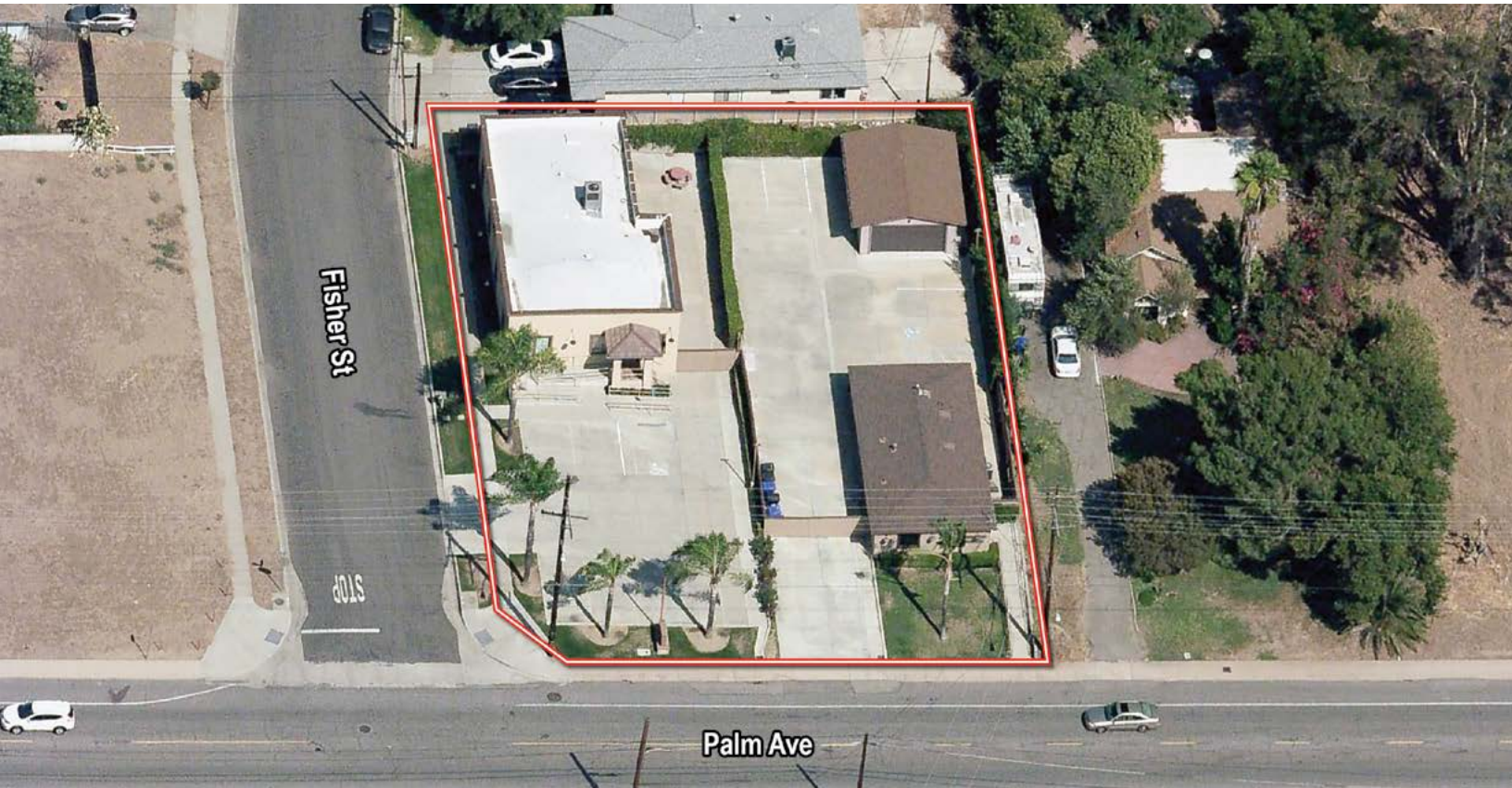


# ±3,644 SF AVAILABLE

FOR SALE | 7035 & 7045 PALM AVE, HIGHLAND, CA



## PROPERTY FEATURES

- 7035: ±1,968 SF Building
- 7045: ±1,176 SF & ±500 SF Buildings
- Medical Office
- Partially Fenced
- Plumbing for Medical
- APN: 1200-361-03 & 1200-361-04
- Great Access to 210 and 10 Freeways
- Can be Sold Together or Separately
- Owner/User/Investment Opportunity



**CHRISTIAN EMERSON**  
Senior Associate  
909.545.8018  
cemerson@voitco.com  
Lic. #02104669

**DANTE BORRUSO**  
Vice President, Partner  
909.775.4475  
dborruso@voitco.com  
Lic. #02086368

**Voit**  
REAL ESTATE SERVICES  
[www.VoitCo.com](http://www.VoitCo.com)

# ±3,644 SF AVAILABLE

FOR SALE | 7035 & 7045 PALM AVE, HIGHLAND, CA

FISHER ST

PALM AVE



**CHRISTIAN EMERSON**  
Senior Associate  
909.545.8018  
cemerson@voitco.com  
Lic. #02104669

**DANTE BORRUSO**  
Vice President, Partner  
909.775.4475  
dborruso@voitco.com  
Lic. #02086368

**Voit**  
REAL ESTATE SERVICES  
[www.VoitCo.com](http://www.VoitCo.com)

# ±3,644 SF AVAILABLE

FOR SALE | 7035 & 7045 PALM AVE, HIGHLAND, CA

## 7035 Palm Ave. Property Photos



**CHRISTIAN EMERSON**  
Senior Associate  
909.545.8018  
cemerson@voitco.com  
Lic. #02104669

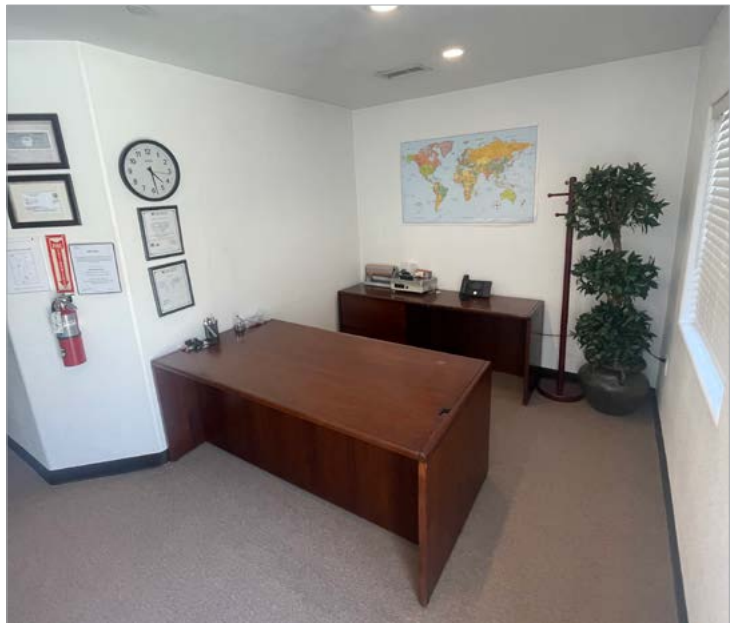
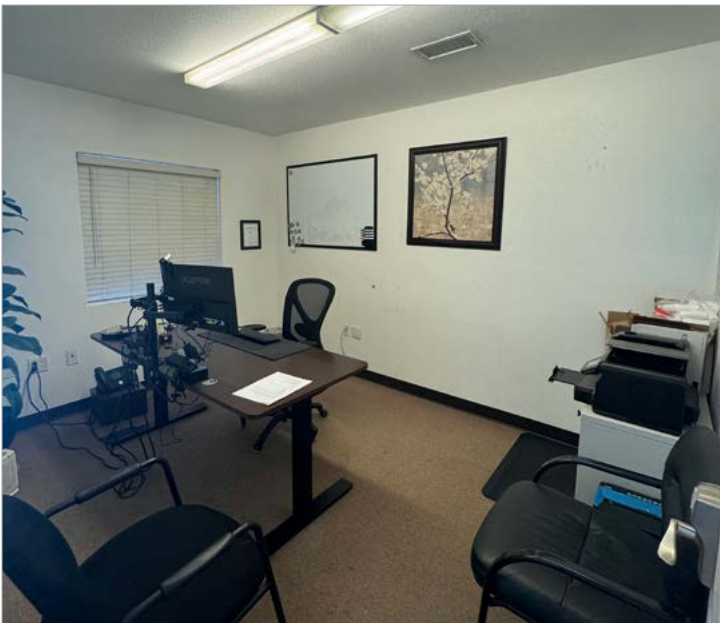
**DANTE BORRUSO**  
Vice President, Partner  
909.775.4475  
dborruso@voitco.com  
Lic. #02086368

**Voit**  
REAL ESTATE SERVICES  
[www.VoitCo.com](http://www.VoitCo.com)

# ±3,644 SF AVAILABLE

FOR SALE | 7035 & 7045 PALM AVE, HIGHLAND, CA

## 7045 Palm Ave. Property Photos



**CHRISTIAN EMERSON**  
Senior Associate  
909.545.8018  
cemerson@voitco.com  
Lic. #02104669

**DANTE BORRUSO**  
Vice President, Partner  
909.775.4475  
dborruso@voitco.com  
Lic. #02086368

**Voit**  
REAL ESTATE SERVICES  
[www.VoitCo.com](http://www.VoitCo.com)