

SUBLEASE

3239 N Loop 1604

cresa



Contact

Marcus Andrade
mandrade@endurasa.com
210.878.6722

Kate Rhodes
krhodes@cresa.com
832.443.9464

Karra Guess
kguess@cresa.com
972.342.7218

Multiple Suites Available
± 1,448 – 18,847 SF

PROPERTY DETAILS

SUBLEASE



GREENWAY PARK
3239 N LOOP 1604
SAN ANTONIO, TX 78257

Rental Rate: Contact Broker

Parking: 3.25 / 1000

Sublease Exp: 1/31/2027

AVAILABLE SUITES

1ST FLOOR

Suite 101: ± 3,474 SF

2ND FLOOR

Suite 218: ± 1,448 SF

3RD FLOOR

Suite 300: ± 18,847 SF



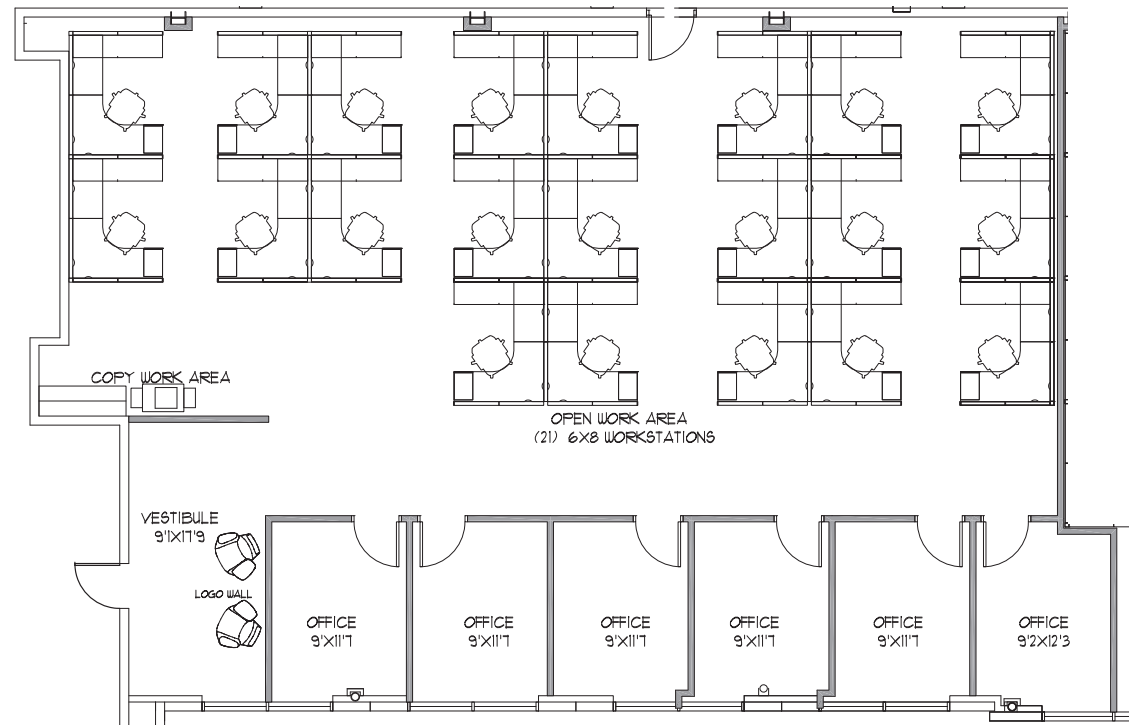
SUITE 101

± 3,474 SF

3239 N LOOP 1604

SUITE FEATURES

- 6 Private Offices
- 21 Cubicles
- Reception Area





SUITE 101



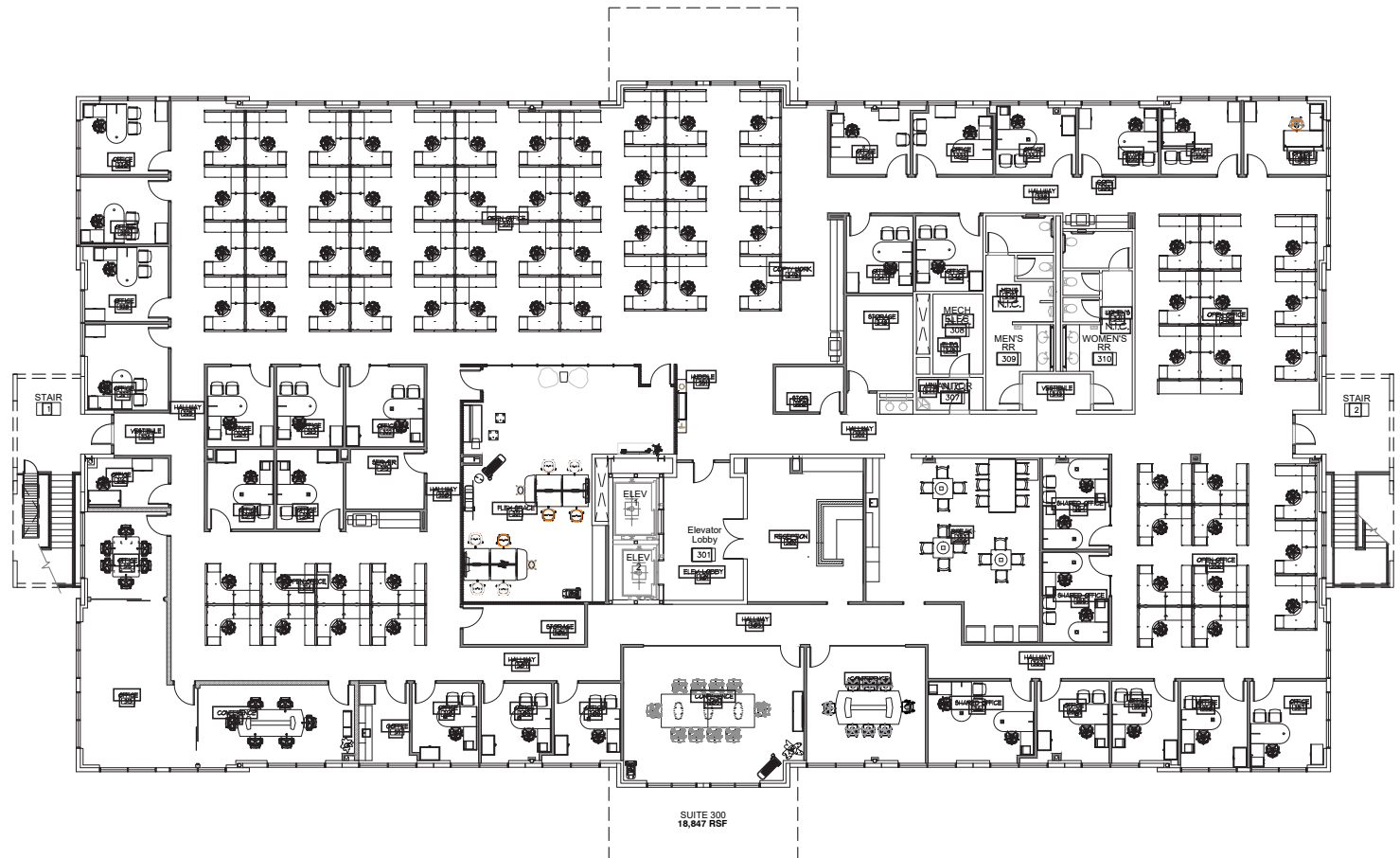
SUITE 300

± 18,847 SF

3239 N LOOP 1604

SUITE FEATURES

- Full Floor (Not Divisible)
- 17 Exterior Offices
- 9 Interior Offices
- Kitchen/ Large Break Room
- 68 Cubicles
- 3 Conference Rooms
- Training Room
- Reception Area
- 3 Copy/Work Areas





SUITE 300





SUITE 300



AREA MAP

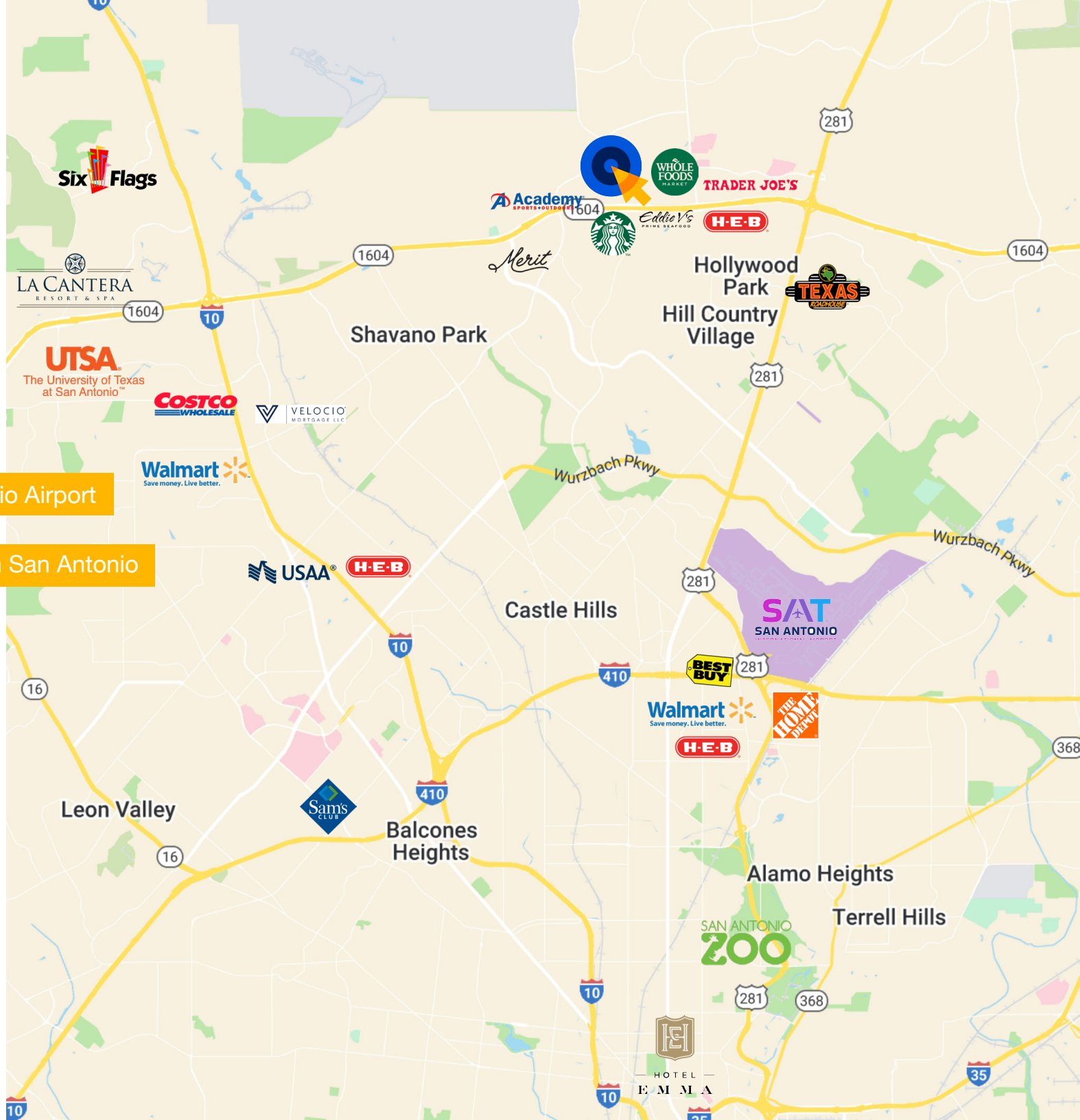
3239 N Loop 1604



13 minutes to San Antonio Airport



22 minutes to Downtown San Antonio





Contact Broker

Marcus Andrade
mandrade@endurasa.com
210.878.6722

Kate Rhodes
krhodes@cresa.com
832.443.9464

Karra Guess
kguess@cresa.com
972.342.7218

Address

901 W. 9th Street
Suite 102
Austin, TX 78703

[TREC Information on Broker Services](#)

Even though obtained from sources deemed reliable, no warranty or representation, express or implied, is made as to the accuracy of the information herein, and it is subject to errors, omissions, change of price, rental or other conditions, withdrawal without notice, and to any special listing conditions imposed by our principals.