



Office Space For Lease

2765 S Colorado Blvd | Denver

735 SF - 843 SF | **\$21.50/SF NNN** | NNN = \$14.18/SF *

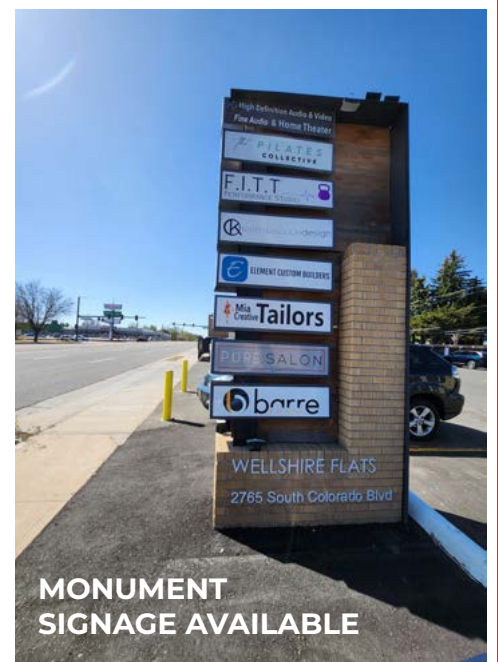
* Expenses include: Property and common area maintenance, building insurance, property taxes, internet, all utilities and camera/security.



Positioned along the highly trafficked South Colorado Boulevard corridor, 2765 S Colorado Blvd offers a rare opportunity to lease efficient, small-format office suites in a highly accessible central Denver location.

With strong surrounding demographics, excellent visibility, and easy highway connectivity, this property is ideal for small businesses seeking a professional presence in a well-established and amenity-rich submarket.

Demographics & Community	1 Mile	3 Miles	5 Miles
Population	14,679	152,393	418,492
Avg. Household Income	\$155,644	\$130,304	\$127,970
Estimated Households	6,650	70,993	196,628



MONUMENT SIGNAGE AVAILABLE

Heather Taylor, CCIM
Principal
720.217.1315
heather@impactcommercial.co

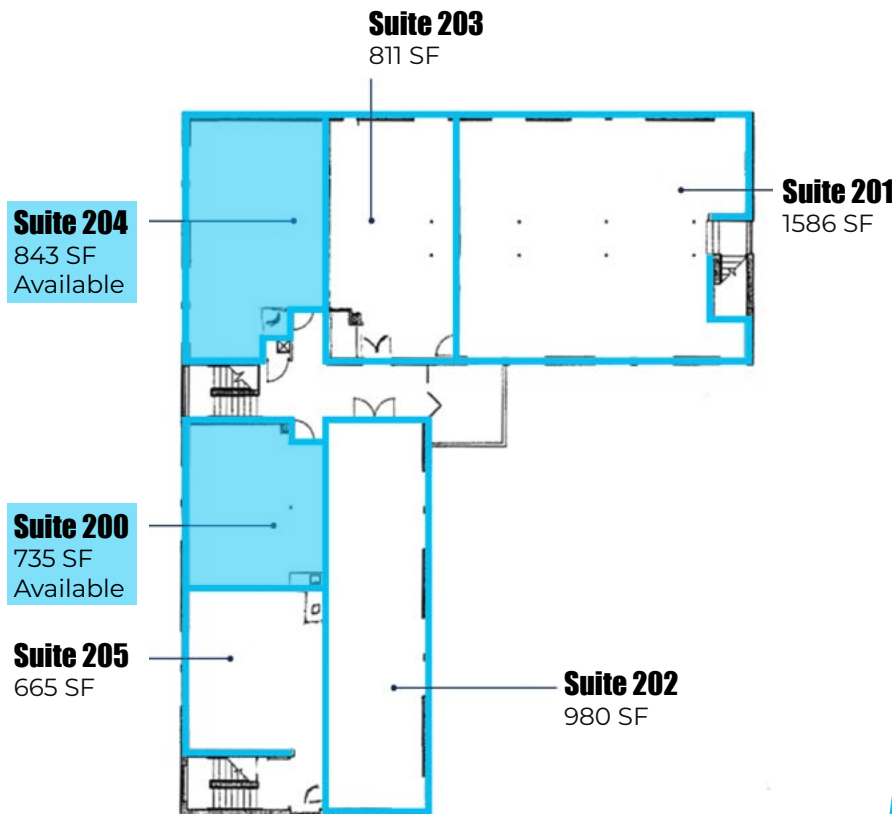
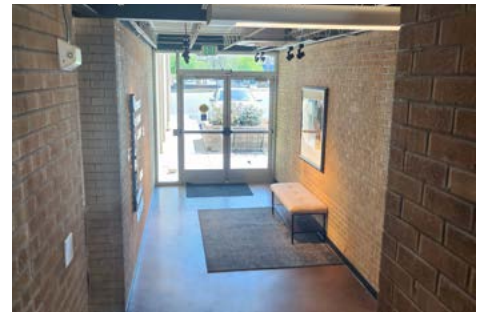
Erika Christiansen
Broker Associate
801.520.3818
erika@impactcommercial.co

7000 S. Yosemite St., Ste. 290
Centennial, CO 80112
720.608.4201
impactcommercial.co



Office Space For Lease

2765 S Colorado Blvd | Denver



Current Availability

Suite 200 - 735 SF

Suite 204 - 843 SF

Lease Rate

\$21.50/SF + \$14.18/SF NNN

Expenses Include

- Property and common area maintenance
- Building insurance
- Property taxes
- Internet
- All Utilities
- Camera/Security

Rare Small Spaces Available

Heather Taylor, CCIM

Principal

720.217.1315

heather@impactcommercial.co

Erika Christiansen

Broker Associate

801.520.3818

erika@impactcommercial.co

7000 S. Yosemite St., Ste. 290

Centennial, CO 80112

720.608.4201

impactcommercial.co