

# 24681 NORTHWESTERN HWY

SOUTHFIELD, MI 48075

980- 2,765 SF 2ND FLOOR OFFICE SPACE AVAILABLE

**FOR LEASE**



**KATHLEEN GARMO**

248.406.1761

kgarmo@keystonecres.com



# 24681 NORTHWESTERN HWY

SOUTHFIELD, MI 48075

## PROPERTY DETAILS & HIGHLIGHTS

Property Type	Office
Property Subtype	Office Building
APN	76-24-26-151-002
Building Size	46,144 SF
Lot Size	9.12 Acres
Building Class	C
Year Built	1970
Year Renovated	June 2023
Number of Floors	4

Discover the ideal space for your business at 24681 Northwestern Hwy in Southfield, MI. This prime commercial property offers modern amenities and flexible floor plans to suit a variety of business needs. The location provides excellent visibility and easy access for clients and employees. With ample parking and high-quality facilities, the property is designed to enhance productivity and efficiency. Take advantage of professional property management and dedicated maintenance services to ensure a seamless work environment. Whether you're seeking office space, a retail storefront, or a new headquarters, this property offers the perfect combination of convenience and quality to elevate your business to new heights.

### KATHLEEN GARMO

248.406.1761  
kgarmo@keystonecres.com



- Prime location on Northwestern Hwy and Evergreen
- Fully furnished offices- move in ready
- June 2023- 100% remodeled for modern design
- Approximately 180 parking spaces for tenants and guests
- Professional property management and security system
- 24 hour access
- Convenience store, fitness center and café on premise
- Ideal for office space, retail, or headquarters use
- Proximity to dining, retail, and other business services



# 24681 NORTHWESTERN HWY

SOUTHFIELD, MI 48075

## PHOTOS - LOBBY



KATHLEEN GARMO

248.406.1761

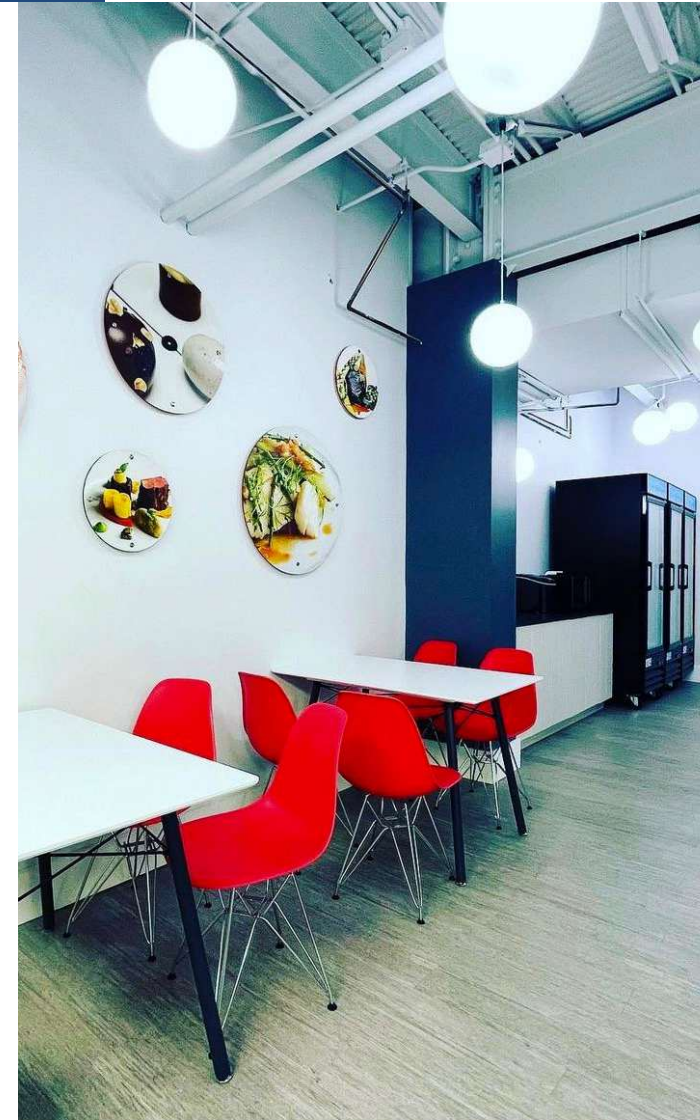
kgarmo@keystonecres.com



# 24681 NORTHWESTERN HWY

SOUTHFIELD, MI 48075

PHOTOS - CONFERENCE ROOM, FITNESS CENTER & CAFE



KATHLEEN GARMO

248.406.1761

kgarmo@keystonecres.com

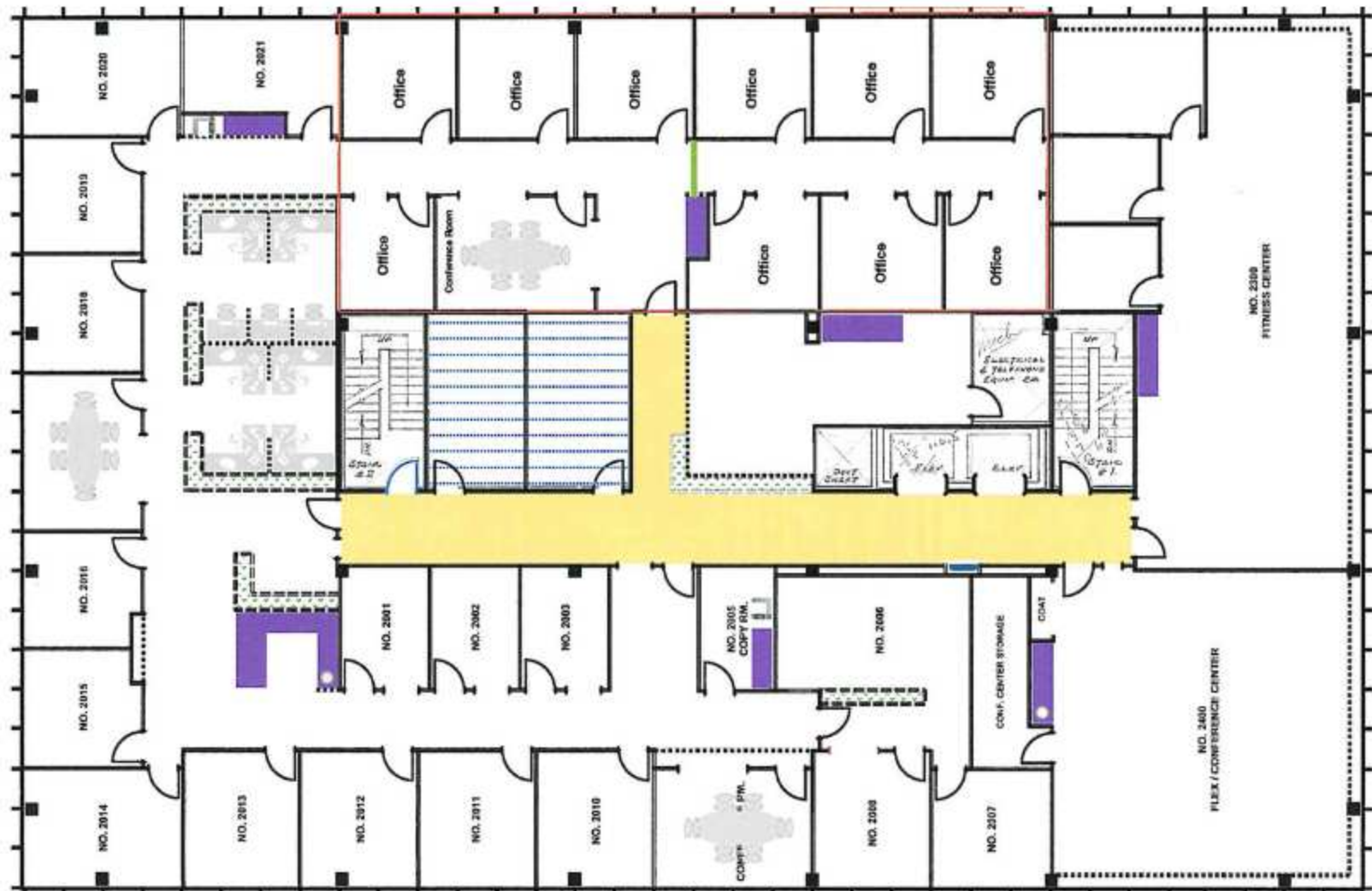


# 24681 NORTHWESTERN HWY

SOUTHFIELD, MI 48075

## SITE PLAN - 2ND FLOOR OFFICE SPACE

### 2nd FLOOR



KATHLEEN GARMO

248.406.1761

kgarmo@keystonecres.com



# 24681 NORTHWESTERN HWY

SOUTHFIELD, MI 48075

## PHOTOS-2ND FLOOR OFFICE SPACE



KATHLEEN GARMO

248.406.1761

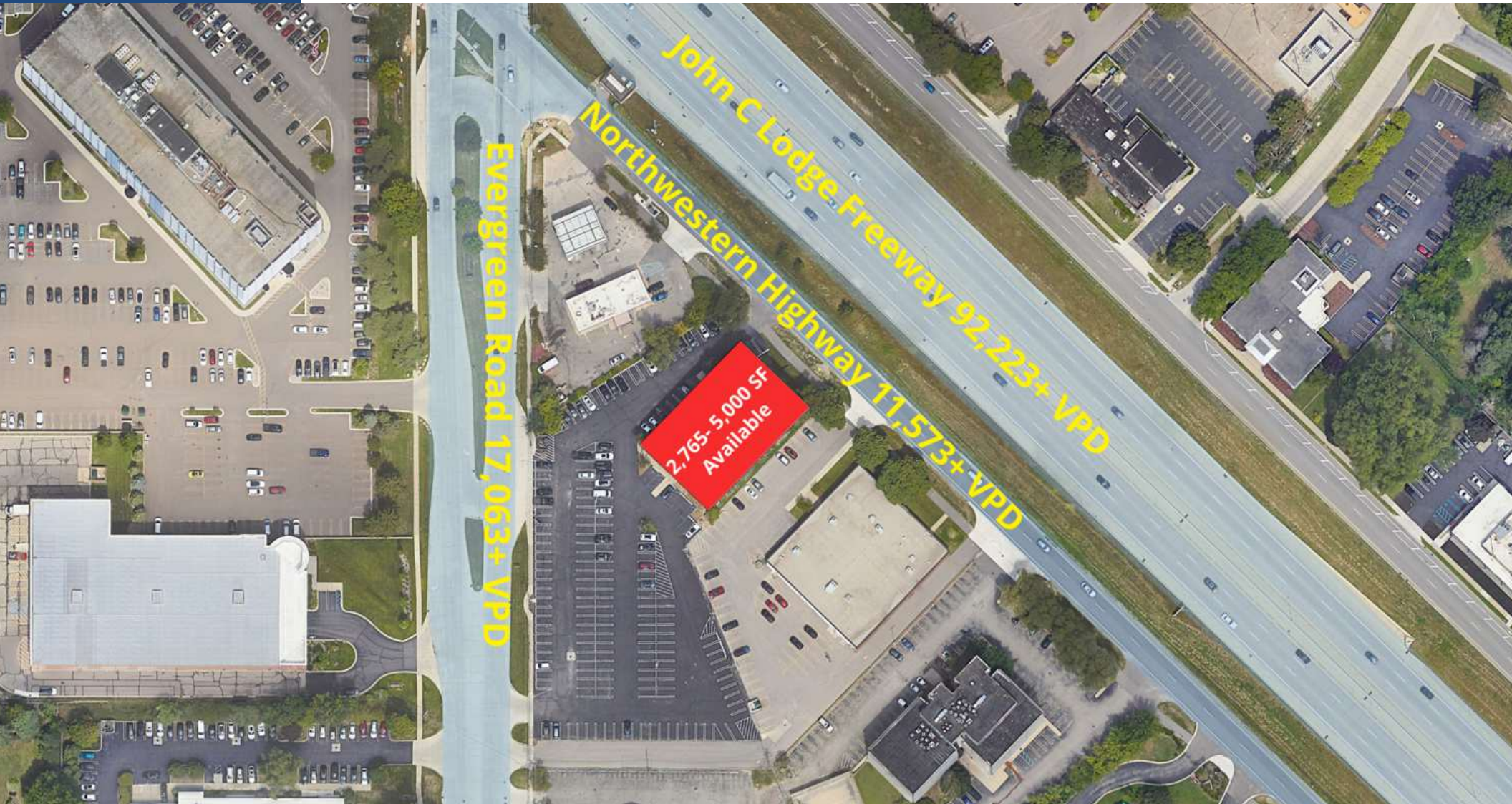
kgarmo@keystonecres.com



# 24681 NORTHWESTERN HWY

SOUTHFIELD, MI 48075

## SITE PLAN



KATHLEEN GARMO

248.406.1761

kgarmo@keystonecres.com



# 24681 NORTHWESTERN HWY

SOUTHFIELD, MI 48075

TRADE AERIAL



KATHLEEN GARMO

248.406.1761

kgarmo@keystonecres.com

31000 NORTHWESTERN HWY SUITE 200 | FARMINGTON HILLS, MI 48334



WWW.KEYSTONECRES.COM

# 24681 NORTHWESTERN HWY

SOUTHFIELD, MI 48075

## DEMOGRAPHICS

POPULATION	1 MILE	3 MILES	5 MILES
Total Population	6,445	106,461	342,009
Average Age	44	43	42
Average Age (Male)	43	40	40
Average Age (Female)	45	44	43

HOUSEHOLDS & INCOME	1 MILE	3 MILES	5 MILES
Total Households	2,420	45,753	146,877
# of Persons per HH	2.7	2.3	2.3
Average HH Income	\$96,763	\$83,314	\$93,880
Average House Value	\$232,915	\$214,197	\$244,775

RACE	1 MILE	3 MILES	5 MILES
Total Population - White	1,191	23,488	119,838
Total Population - Black	4,634	75,715	194,363
Total Population - Asian	126	1,431	5,977
Total Population - Hawaiian	14	37	84
Total Population - American Indian	9	208	828
Total Population - Other	206	1,219	3,850

*Demographics data derived from AlphaMap*



**KATHLEEN GARMO**

248.406.1761  
kgarmo@keystonecres.com



# 24681 NORTHWESTERN HWY

SOUTHFIELD, MI 48075

B R O K E R



**KATHLEEN GARMO**

Senior Advisor

kgarmo@keystonecres.com

**KATHLEEN GARMO**

248.406.1761

kgarmo@keystonecres.com

