



GRANADA BUILDINGS

672 La Fayette Park Place, Los Angeles, CA 90057

JMF DEVELOPMENT



PROPERTY OVERVIEW

The Granada Buildings are an imaginative, Mediterranean and Spanish Colonial Revival style block-long complex consisting of four courtyard-connected structures encompassing over 60,000 square feet. The two-story studios were initially built as live-work spaces in 1927 by a Kentucky-born journalist turned developer, Franklin Harper.

Over the years, the Granada Buildings have developed a reputation as one of LA's creative centers, housing some of its best-known architects, artists, and designers. The complex was renovated and reopened in 1990 as 42 office/studio suites.

In the Westlake District of Downtown Los Angeles, a historic area adjacent to Lafayette Park, tenants will enjoy an impressive city skyline and a peaceful, picturesque park. The Granada Buildings offer easy connectivity to the 10, 110, and 101 Freeways, providing efficient travel times to the office. Just two miles from Downtown Los Angeles, this destination is within reach of all the retail, dining, and entertainment attractions this sprawling city offers.

HIGHLIGHTS

Prime LA Location: Discover the vibrant heart of Los Angeles at 672 S La Fayette Park Pl, with easy access to cultural attractions and business hubs.

Timeless Charm: Step into a historic gem with captivating architectural details that bring a touch of elegance to the work environment.

Versatile Office Spaces: Find the perfect fit for businesses through a range of flexible floor plans and configurations to suit tenant needs.

Scenic Views: Enjoy sweeping vistas of the city skyline or the serene Lafayette Park, adding inspiration to your everyday work experience.

Convenient Parking: Benefit from on-site parking, ensuring hassle-free accessibility for tenants and visitors, making your daily commute a breeze.

Outdoor Space: Experience ample outdoor space in the block-long complex of four courtyard-connected structures and balconies on select suites.



PROPERTY PHOTOS





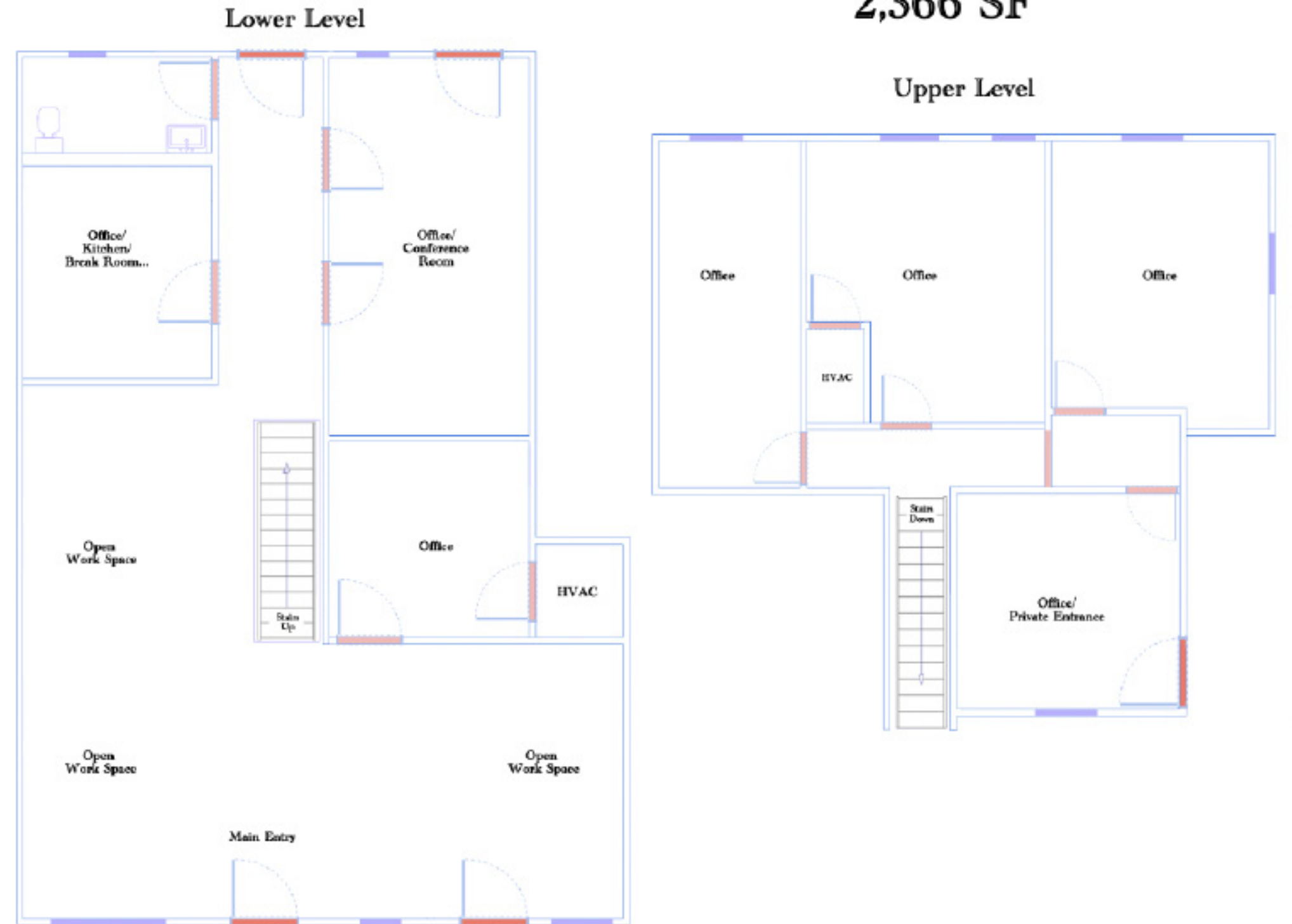
SUITE 4-5

Ideal for larger teams, this suite includes 5 private offices, a conference room seating 10, a kitchenette, and a versatile open workspace. With high ceilings, plenty of natural light, and a private parking lot entrance, it's a perfect fit for collaborative work.

Space Available: 2,366 SF
Rental Rate: \$18.00 /SF/YR
Contiguous Area: 4,776 SF
Date Available: Now Service
Type: Modified Gross Space
Type: Relet Space Use: Office
Lease Term: 1-5 Years



The Granada Buildings Suite 4-5 2,366 SF



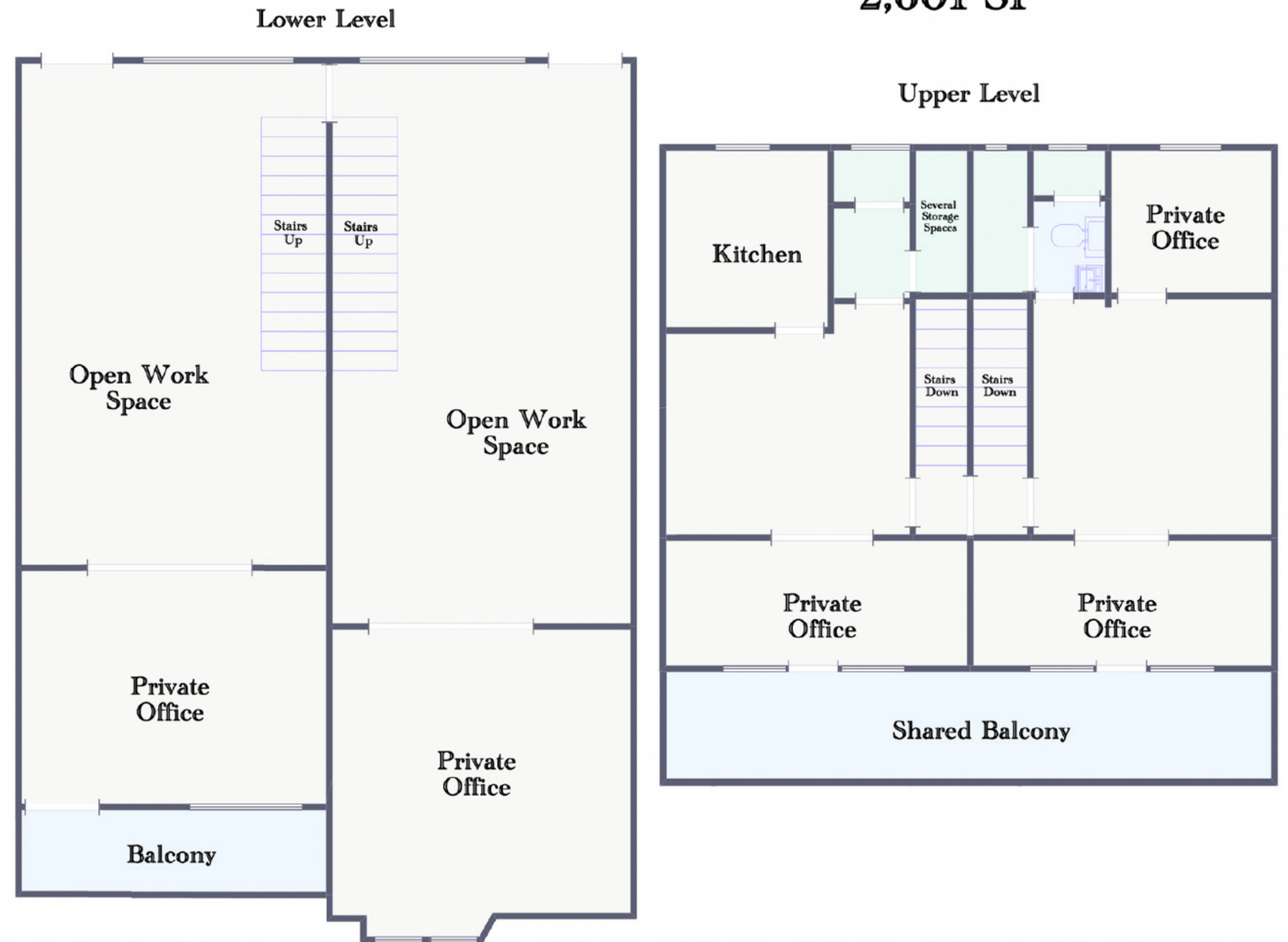
SUITE 28-29

A great fit for larger teams, this suite has 4 private offices, 2 conference rooms (seats 10), a kitchenette, and spacious open workspaces that can be utilized in many ways. The suite features high ceilings and ample natural light, as well as a private balcony to the lower level.

Space Available: 2,601 SF
Rental Rate: \$22.00 /SF/YR
Date Available: Now
Service Type: Modified Gross
Space Type: Relet
Space Use: Office
Lease Term: 1-3 Years



The Granada Buildings Suite 28-29 2,601 SF



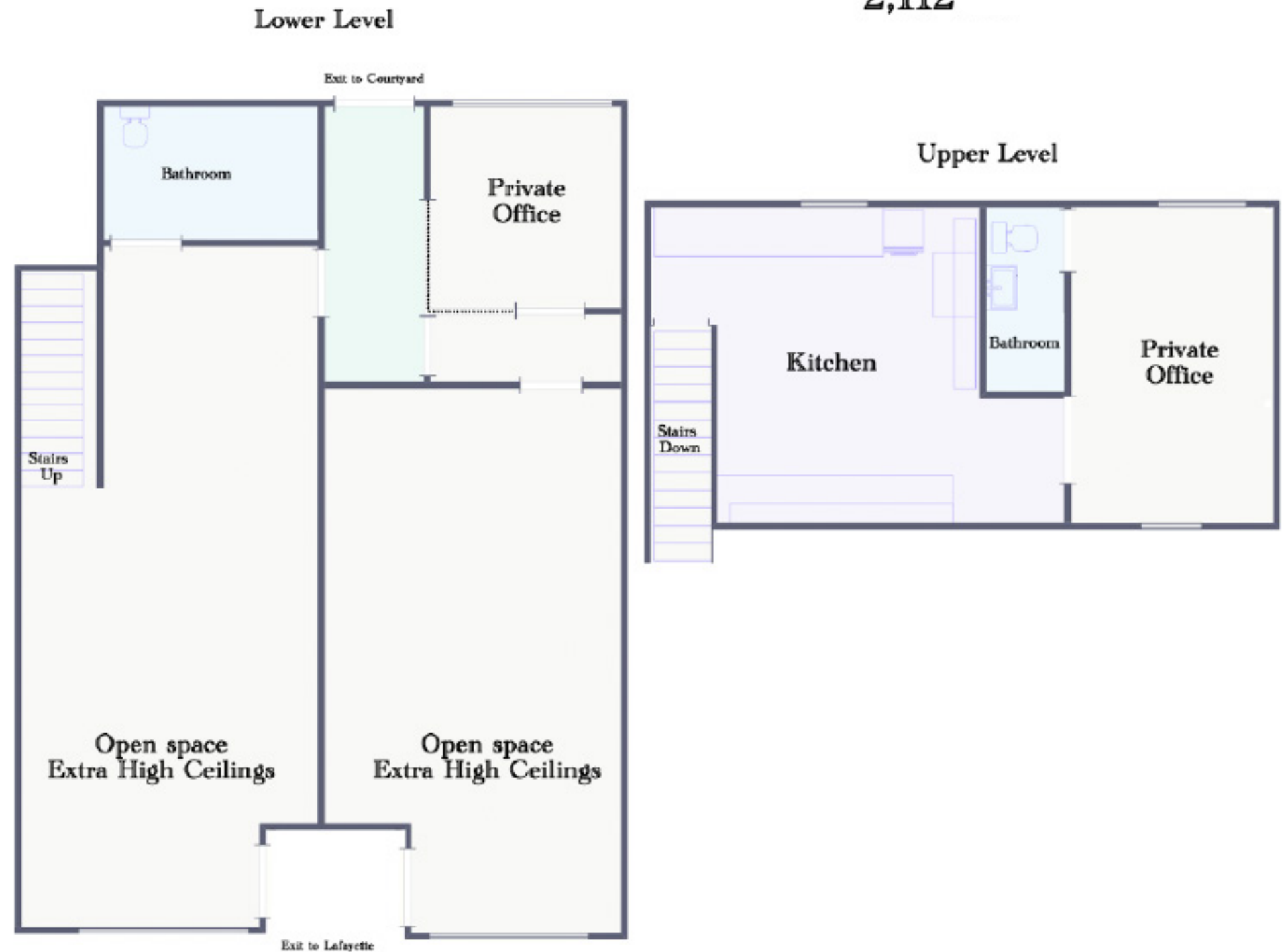
SUITE 669

With two large open spaces sectioned off, this suite is great for those who like to customize their space with their own layout. This space also features two private offices and a large kitchen on the upper level.

Space Available: 2,112 SF
Date Available: Now
Service Type: Modified Gross
Space Type: Relet
Space Use: Office
Lease Term: 1-5 Years



The Granada Buildings Suite 669 2,112



SUITE 674

With two large open spaces sectioned off, this suite is great for those who like to customize their space with their own layout. This space also features two private offices and a large kitchen on the upper level.

Space Available: 2,178 SF
Rental Rate: \$20.28 SF/YR
Date Available: Now
Service Type: Modified Gross
Space Type: Relet
Space Use: Office
Lease Term: 1-5 Years

FLOOR PLAN COMING SOON

SUITE 676

Ideal for larger teams operating in a collaborative environment, this suite offers ample space for 10+ individuals, whether they prefer workstations, cubicles, or desks. The expansive open area on the lower level provides an ideal office setting. Additionally, the suite includes two private offices, two bathrooms, and a kitchen on the upper level.

Space Available: 2,254 SF
Rental Rate: \$24.00 /SF/YR
Date Available: Now
Service Type: Modified Gross
Space Type: Relet
Space Use: Office
Lease Term: 1-5 Years



The Granada Buildings Suite 676 2,254 SF





CONTACT DETAILS

ARSHAK PAPAZYAN
LEASING MANAGER

mobile: (213) 929-3428
direct: (213) 654-5739

arshak.papazyan@jmfdevelopment.com
leasing@jmfdevelopment.com