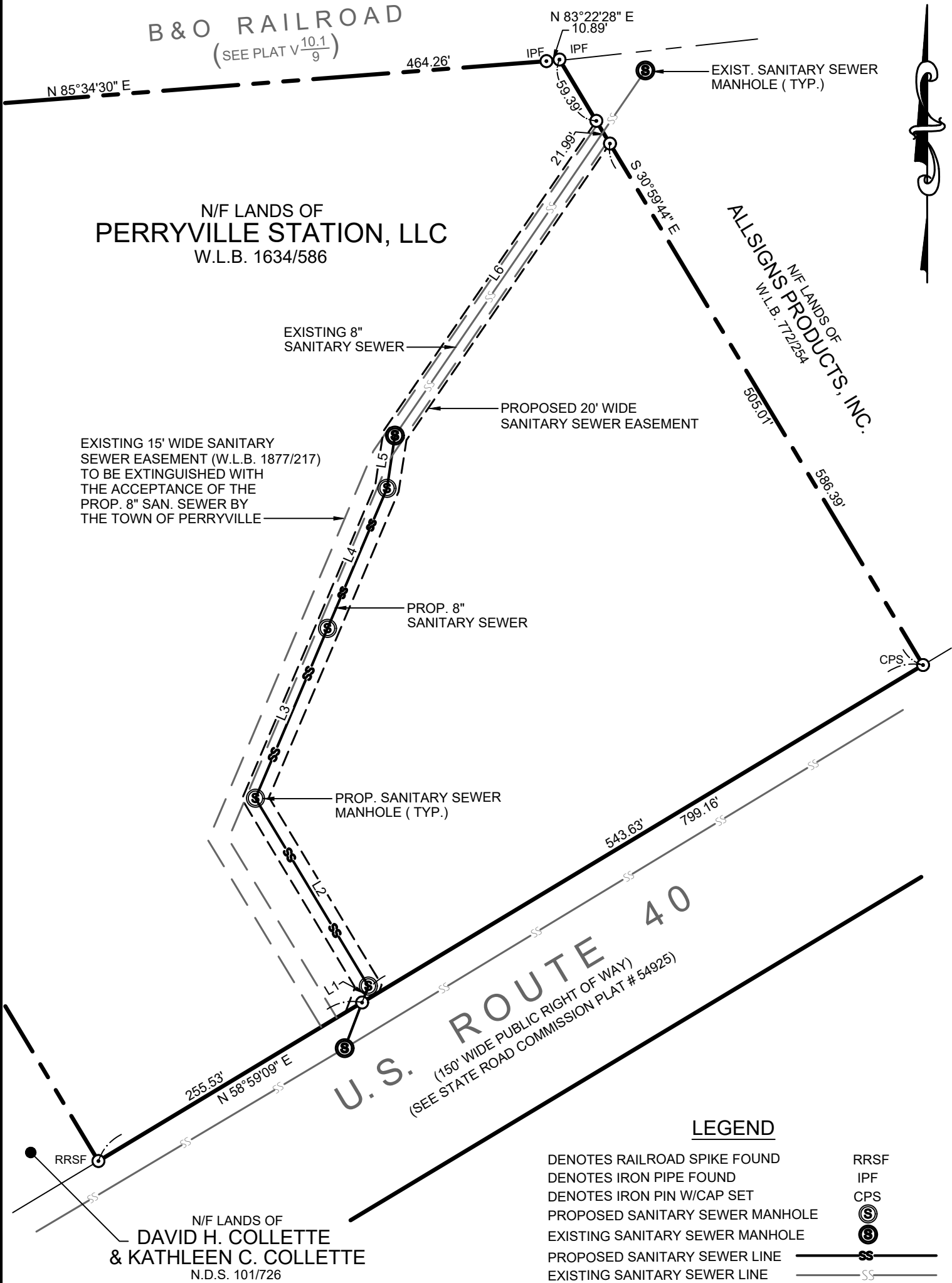


EXHIBIT "B"

LINE	BEARING	DISTANCE
L1	N20°51'28"E	14.58'
L2	N31°00'51"W	181.95'
L3	N23°00'06"E	153.15'
L4	N23°00'06"E	126.33'
L5	N08°35'55"E	44.31'
L6	N34°27'50"E	305.49'



PROPOSED SANITARY SEWER EASEMENT RELOCATION
ON THE LANDS OF
PERRYVILLE STATION, LLC
SEVENTH ELECTION DISTRICT, CECIL COUNTY, MARYLAND
FOR : PERRYVILLE STATION, L.L.C.

McCRONE
ENGINEERING ■ ENVIRONMENTAL SCIENCES
LAND PLANNING & SURVEYING ■ CONSTRUCTION SERVICES
CLAYTON PROFESSIONAL BUILDING
118 NORTH STREET
ELKTON, MARYLAND
(410) 388-1550
© COPYRIGHT LAST DATE INDICATED HEREON
ANNAPOLIS-CENTREVILLE-DOVER-ELKTON-SALISBURY

DRAWN BY: M. LLOYD
SCALE: 1"=100'
DATE: APRIL 2005
JOB NO.: D3020272
FOLDER: 2638