

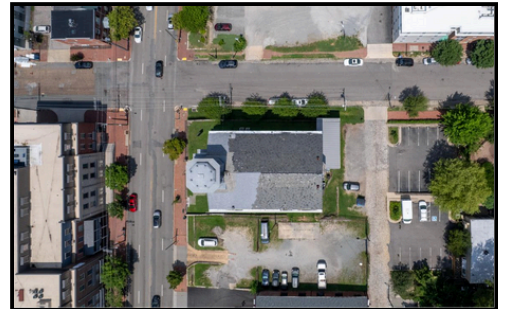


2000 & 1920 E Broad St. Richmond, VA

Situated at 2000 E Broad Street in Richmond, this $\pm 9,440$ SF historic church occupies nearly half an acre and is zoned M-1. An adjacent ± 0.26 -acre vacant parcel at 1920 E Broad Street presents further redevelopment potential.



Church Hill is Richmond's oldest intact neighborhood, rich in history and cultural energy. Home to landmarks like St. John's Church and Libby Hill Park, the area also offers a vibrant mix of events, dining, and green spaces. With its walkability, strong community vibe, and growing community, Church Hill is a prime location for living, visiting, and developing.



- $\pm 9,440$ SF Church | Lot: ± 0.49 acres
- Adjacent ± 0.26 -acre Vacant Lot
- Broad St Frontage
- M-1 Zoning
- Ideal for Redevelopment or Adaptive Reuse



Robert Jones

President
(804) 293-2621
Robert@ICONCommercialRVA.com
www.ICONCommercialRVA.com
4501 E Main St, Suite A
Richmond, VA 23231



Colby Kay

Senior Vice President
(804) 293-2621
ColbyKay@ICONCommercialRVA.com
www.ICONCommercialRVA.com
4501 E Main St, Suite A
Richmond, VA 23231