



# 16889-16929 Beach Blvd

Huntington Beach, California 92647

## Property Highlights

- 6,000 SF Endcap Available
- 3x Restrooms, 2x Showers, Private Office
- Former Crossfit Gym
- Prime Visibility from Beach Boulevard - 70,000 Vehicles Per Day
- Beautiful Neighborhood Center Positioned Near the Beach Boulevard & Warner Retail Corridor
- Nice Tenant Mix Including Restaurants, Coffee Shops, Salon
- Over 200,000 people within a 3-Mile radius. Average household income over \$100k.

## OFFERING SUMMARY

Available SF:	6,000 SF
Suite #:	16929
Rate:	\$3.00 (MG)

## DEMOGRAPHICS

	1 MILE	3 MILES	5 MILES
Total Households	9,768	73,898	174,282
Total Population	28,166	211,562	520,455
Average HH Income	\$118,506	\$138,941	\$133,271

**Steve Liu**

Executive Vice President | 949.468.2385  
sliu@naicapital.com | CalDRE #01323150

**Alex Tohidian**

Senior Associate | 949.468.2335  
atohidian@naicapital.com | CalDRE #02185779







**FOR LEASE**



**RETAIL SPACE**



**6,000 SF**



**Steve Liu**

Executive Vice President | 949.468.2385  
sliu@naicapital.com | CalDRE #01323150

**Alex Tohidian**

Senior Associate | 949.468.2335  
atohidian@naicapital.com | CalDRE #02185779



[www.naicapital.com](http://www.naicapital.com)

NO WARRANTY, EXPRESS OR IMPLIED, IS MADE AS TO THE ACCURACY OF THE INFORMATION CONTAINED HEREIN. THIS INFORMATION IS SUBMITTED SUBJECT TO ERRORS, OMISSIONS, CHANGE OF PRICE, RENTAL OR OTHER CONDITIONS, WITHDRAWAL WITHOUT NOTICE, AND IS SUBJECT TO ANY SPECIAL LISTING CONDITIONS IMPOSED BY OUR PRINCIPALS. COOPERATING BROKERS, BUYERS, TENANTS AND OTHER PARTIES WHO RECEIVE THIS DOCUMENT SHOULD NOT RELY ON IT, BUT SHOULD USE IT AS A STARTING POINT OF ANALYSIS, AND SHOULD INDEPENDENTLY CONFIRM THE ACCURACY OF THE INFORMATION CONTAINED HEREIN THROUGH A DUE DILIGENCE REVIEW OF THE BOOKS, RECORDS, FILES AND DOCUMENTS THAT CONSTITUTE RELIABLE SOURCES OF THE INFORMATION DESCRIBED HEREIN. LOGOS ARE FOR IDENTIFICATION PURPOSES ONLY AND MAY BE TRADEMARKS OF THEIR RESPECTIVE COMPANIES. NAI CAPITAL COMMERCIAL, INC. CAL DRE LIC. #02130474





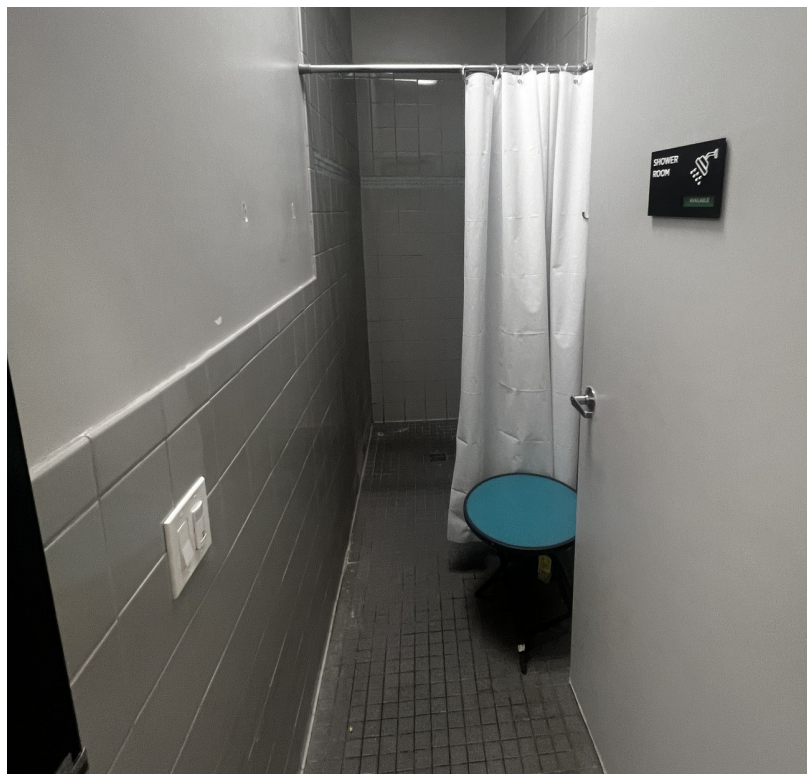
**FOR LEASE**



**RETAIL SPACE**



**6,000 SF**



**Steve Liu**

Executive Vice President | 949.468.2385  
sliu@naicapital.com | CalDRE #01323150

**Alex Tohidian**

Senior Associate | 949.468.2335  
atohidian@naicapital.com | CalDRE #02185779



[www.naicapital.com](http://www.naicapital.com)

NO WARRANTY, EXPRESS OR IMPLIED, IS MADE AS TO THE ACCURACY OF THE INFORMATION CONTAINED HEREIN. THIS INFORMATION IS SUBMITTED SUBJECT TO ERRORS, OMISSIONS, CHANGE OF PRICE, RENTAL OR OTHER CONDITIONS, WITHDRAWAL WITHOUT NOTICE, AND IS SUBJECT TO ANY SPECIAL LISTING CONDITIONS IMPOSED BY OUR PRINCIPALS. COOPERATING BROKERS, BUYERS, TENANTS AND OTHER PARTIES WHO RECEIVE THIS DOCUMENT SHOULD NOT RELY ON IT, BUT SHOULD USE IT AS A STARTING POINT OF ANALYSIS, AND SHOULD INDEPENDENTLY CONFIRM THE ACCURACY OF THE INFORMATION CONTAINED HEREIN THROUGH A DUE DILIGENCE REVIEW OF THE BOOKS, RECORDS, FILES AND DOCUMENTS THAT CONSTITUTE RELIABLE SOURCES OF THE INFORMATION DESCRIBED HEREIN. LOGOS ARE FOR IDENTIFICATION PURPOSES ONLY AND MAY BE TRADEMARKS OF THEIR RESPECTIVE COMPANIES. NAI CAPITAL COMMERCIAL, INC. CAL DRE LIC. #02130474



POPULATION	1 MILE	3 MILES	5 MILES
Total Population	28,166	211,562	520,455
Average Age	39	43	43
Average Age (Male)	38	42	42
Average Age (Female)	40	44	44
HOUSEHOLDS & INCOME	1 MILE	3 MILES	5 MILES
Total Households	9,768	73,898	174,282
# of Persons per HH	2.9	2.9	3
Average HH Income	\$118,506	\$138,941	\$133,271
Average House Value	\$802,451	\$992,122	\$931,964
RACE	1 MILE	3 MILES	5 MILES
% White	39.6%	41.8%	37.4%
% Black	1.8%	1.3%	1.1%
% Asian	17.4%	33.7%	33.8%
% Hawaiian	0.4%	0.3%	0.4%
% American Indian	1.4%	0.7%	0.9%
% Other	24.9%	10.6%	14.2%

Demographics data derived from AlphaMap



## Steve Liu

Executive Vice President | 949.468.2385  
sliu@naicapital.com | CalDRE #01323150

## Alex Tohidian

Senior Associate | 949.468.2335  
atohidian@naicapital.com | CalDRE #02185779