

# McCONNELL REAL ESTATE, INC.



**±0.526 ACRES**  
**LETTON DRIVE, PARIS, KY**  
**ZONED B-2 (GENERAL COMMERCIAL)**



**TODD McCONNELL**  
PRINCIPAL BROKER  
PRINCIPAL AUCTIONEER  
**859.707.6824**  
[Todd@soldbymcre.com](mailto:Todd@soldbymcre.com)



# ± 0.526 ACRES | PARIS, KY

## ZONED B-2 (GENERAL COMMERCIAL)



### PROPERTY SUMMARY

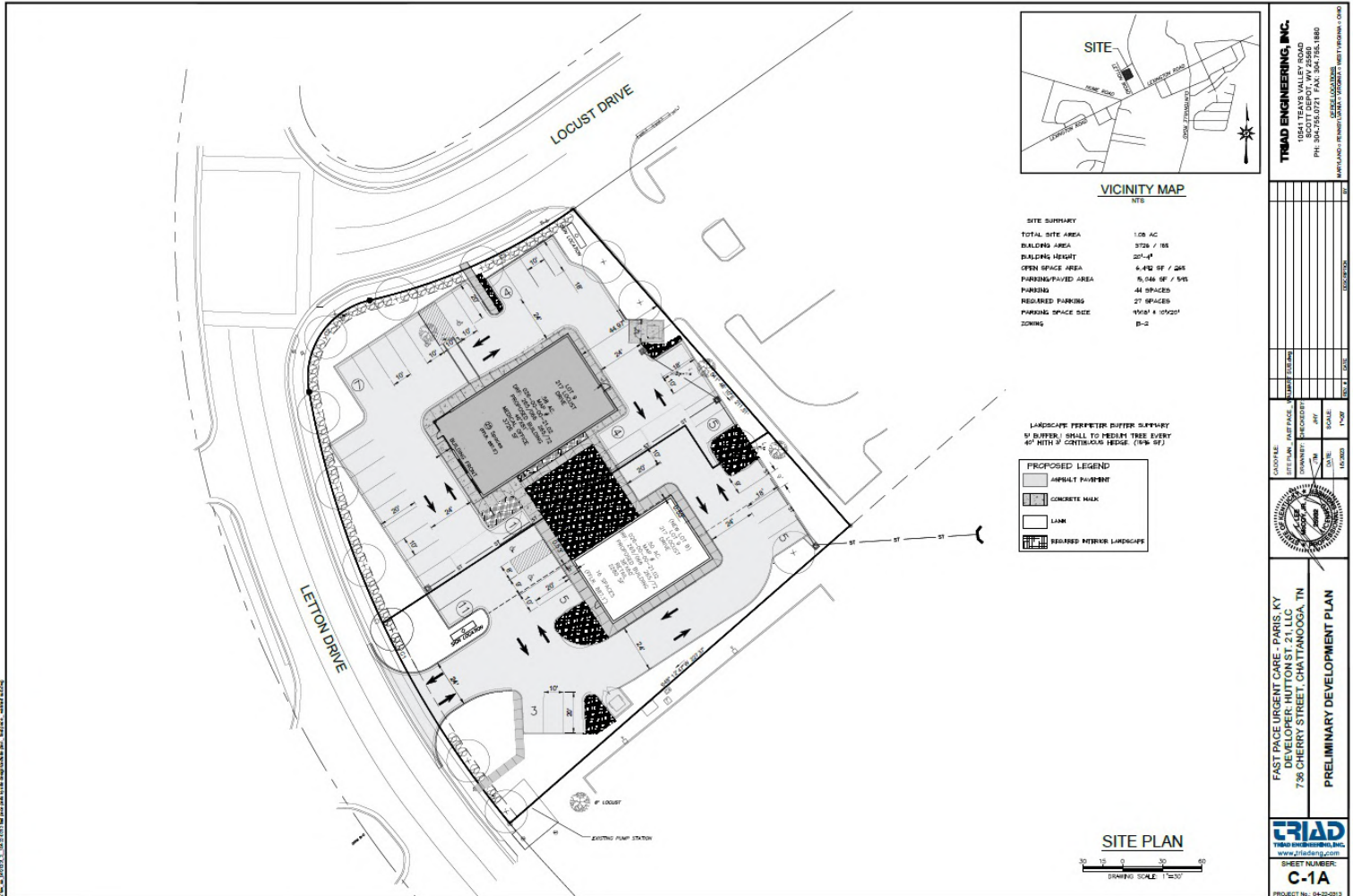
Prime 0.526 Acre Commercial Parcel in high visibility area near Walmart Shopping Center, Newly Constructed Residential Development, Top-Rated Vehicle Dealership, and several retail, food and service establishments. Offers frontage on Letton Drive and entrance already in place. Accessible from Lexington Road & Paris By-Pass Road. Ready for investors, builders, and business owners. Lot is zoned B-2 General Commercial.

**TODD McCONNELL** 859.707.6824 [Todd@soldbymcre.com](mailto:Todd@soldbymcre.com)



# ± 0.526 ACRES | PARIS, KY

## ZONED B-2 (GENERAL COMMERCIAL)



### PROPOSED PROPERTY SITE PLAN | NEW LOT B OFFERED



**TODD McCONNELL** 859.707.6824 Todd@soldbymcre.com

