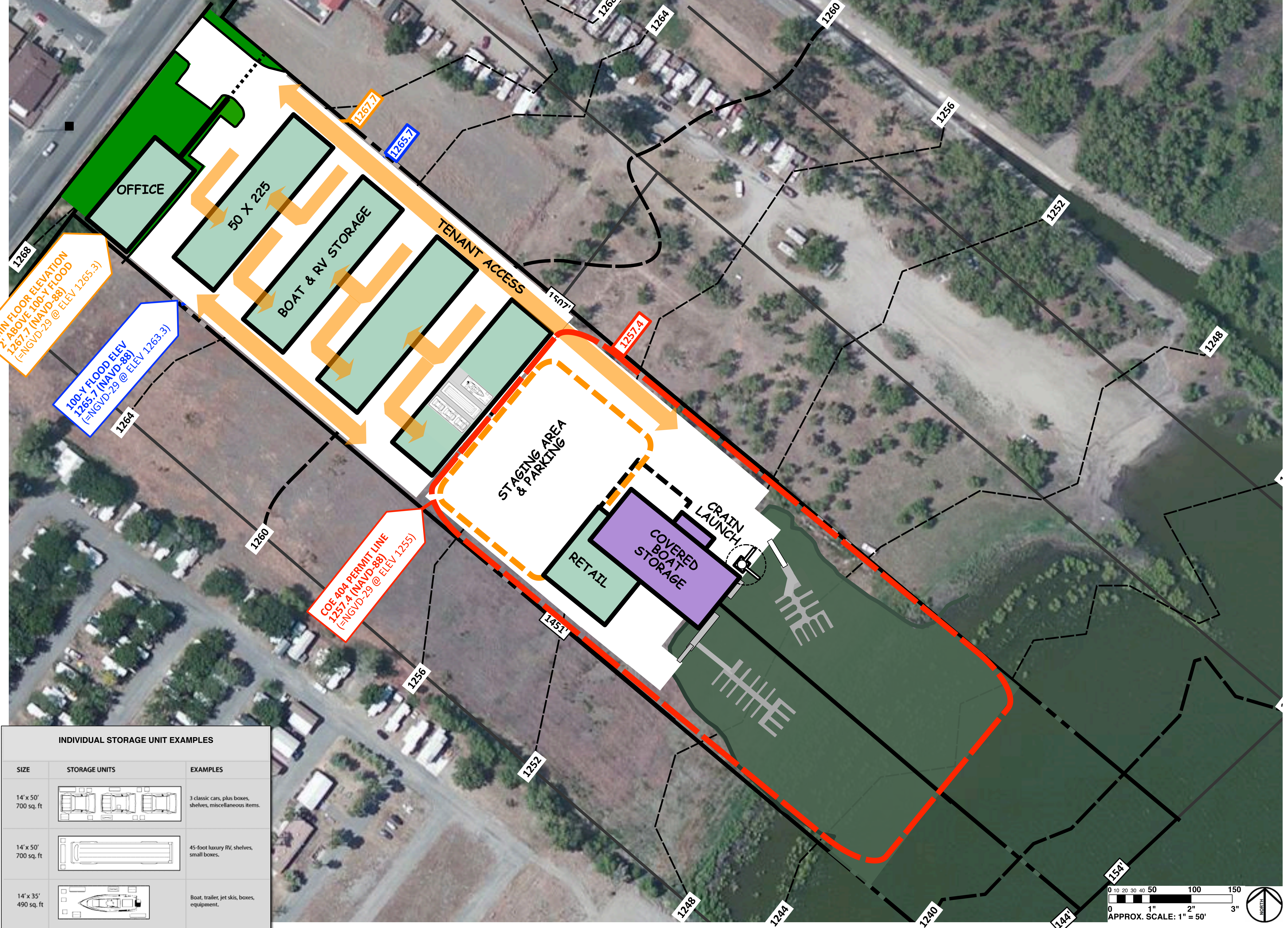


NOTE: TOPOGRAPHIC INFORMATION IS DIAGRAMATIC & CONTOUR ELEVATIONS ARE APPROXIMATE. The contour lines were interpolated from a map based on the North American Vertical Datum of 1988 (NAVD-88), which is 2.4' higher than the National Geodetic Vertical Datum of 1929 (NGVD-29)

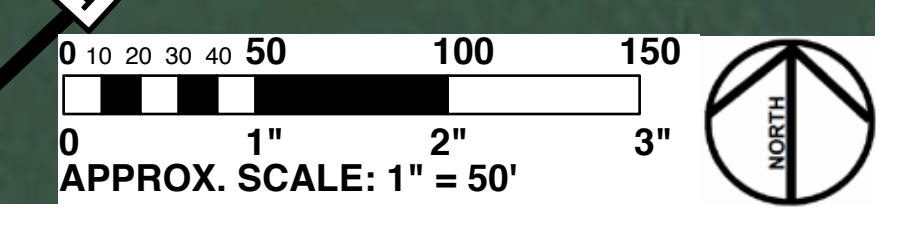


MIN FLOOR ELEVATION
2' ABOVE 100-Y FLOOD
1267.7 (NAVD-88)
(=NGVD-29 @ ELEV 1265.3)

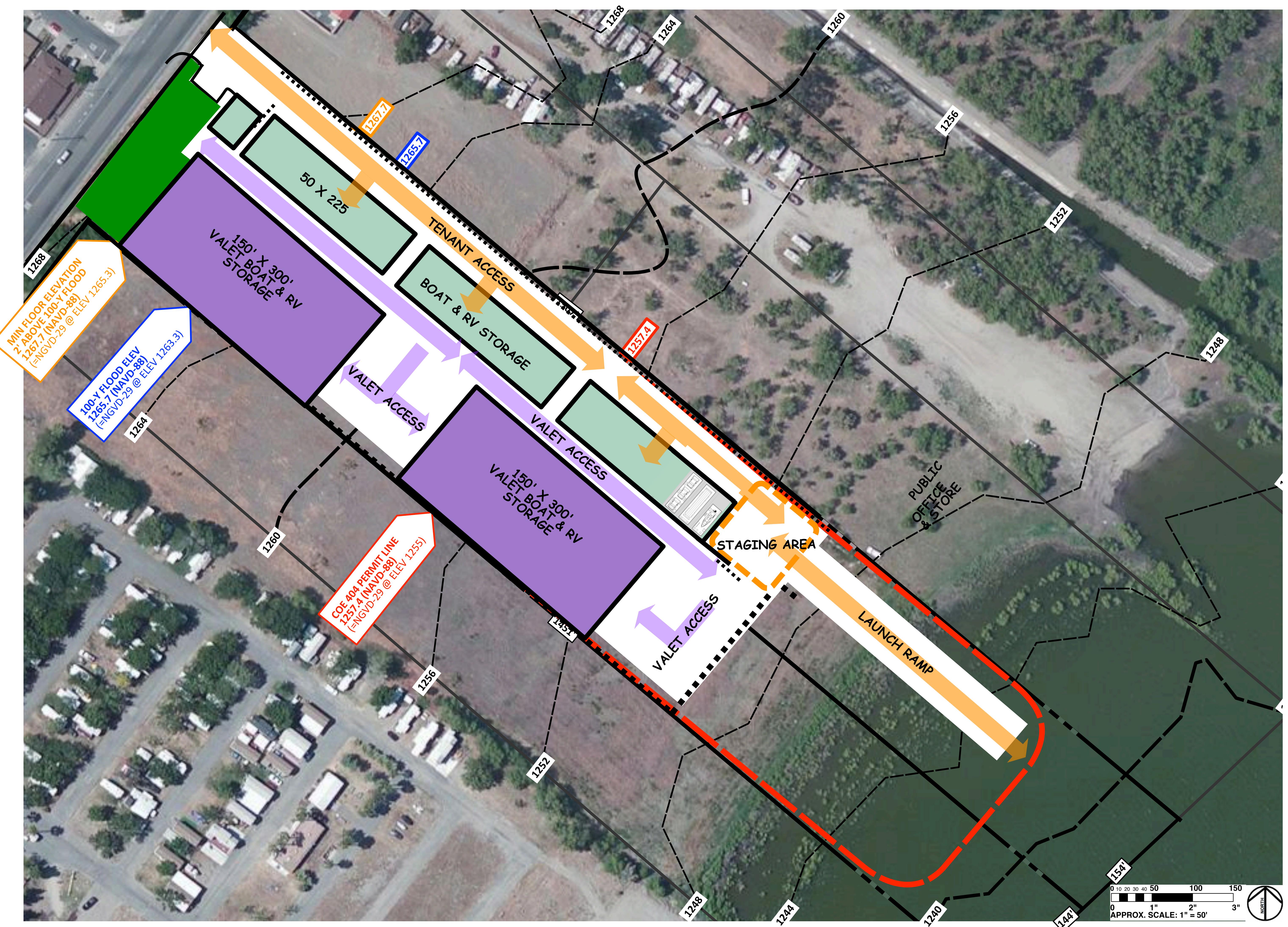
100-Y FLOOD ELEV
1265.7 (NAVD-88)
(=NGVD-29 @ ELEV 1263.3)

COE 404 PERMIT LINE
1257.4 (NAVD-88)
(=NGVD-29 @ ELEV 1255)

INDIVIDUAL STORAGE UNIT EXAMPLES		
SIZE	STORAGE UNITS	EXAMPLES
14' x 50' 700 sq. ft		3 classic cars, plus boxes, shelves, miscellaneous items.
14' x 50' 700 sq. ft		45-foot luxury RV, shelves, small boxes.
14' x 35' 490 sq. ft		Boat, trailer, jet skis, boxes, equipment.



NOTE: TOPOGRAPHIC INFORMATION IS DIAGRAMATIC & CONTOUR ELEVATIONS ARE APPROXIMATE. The contour lines were interpolated from a map based on the North American Vertical Datum of 1988 (NAVD-88), which is 2.4' higher than the National Geodetic Vertical Datum of 1929 (NGVD-29)



NOTE: TOPOGRAPHIC INFORMATION IS DIAGRAMATIC & CONTOUR ELEVATIONS ARE APPROXIMATE. The contour lines were interpolated from a map based on the North American Vertical Datum of 1988 (NAVD-88), which is 2.4' higher than the National Geodetic Vertical Datum of 1929 (NGVD-29)

