



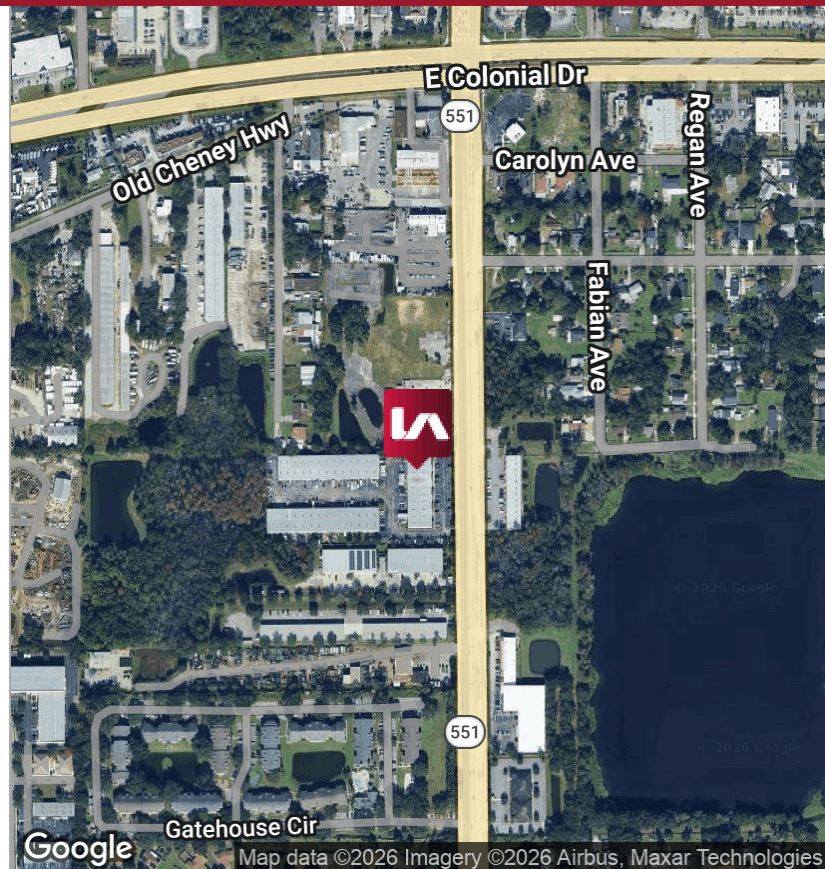
## LISTING DATA

**Available SF:** Suite 100 | 4,000 SF  
**Doors:** Two 12' x 14' Grade Level Doors  
**Clear Height:** 17.5' - 20.5'  
**Zoning:** IND-1/IND-5 (Orange County)  
**Loading:** Rear  
**Parking Ratio:** 3/1,000 SF

**Comments:** Goldenrod Business Center is comprised of 3 Industrial/Flex buildings totaling 78,736 SF located in east central Orlando with convenient access to SR-50, SR-408, and SR-417. The project is professionally owned and managed making it an ideal location for years to come.

## ECONOMIC DATA

**Lease Rate:** Call For Info



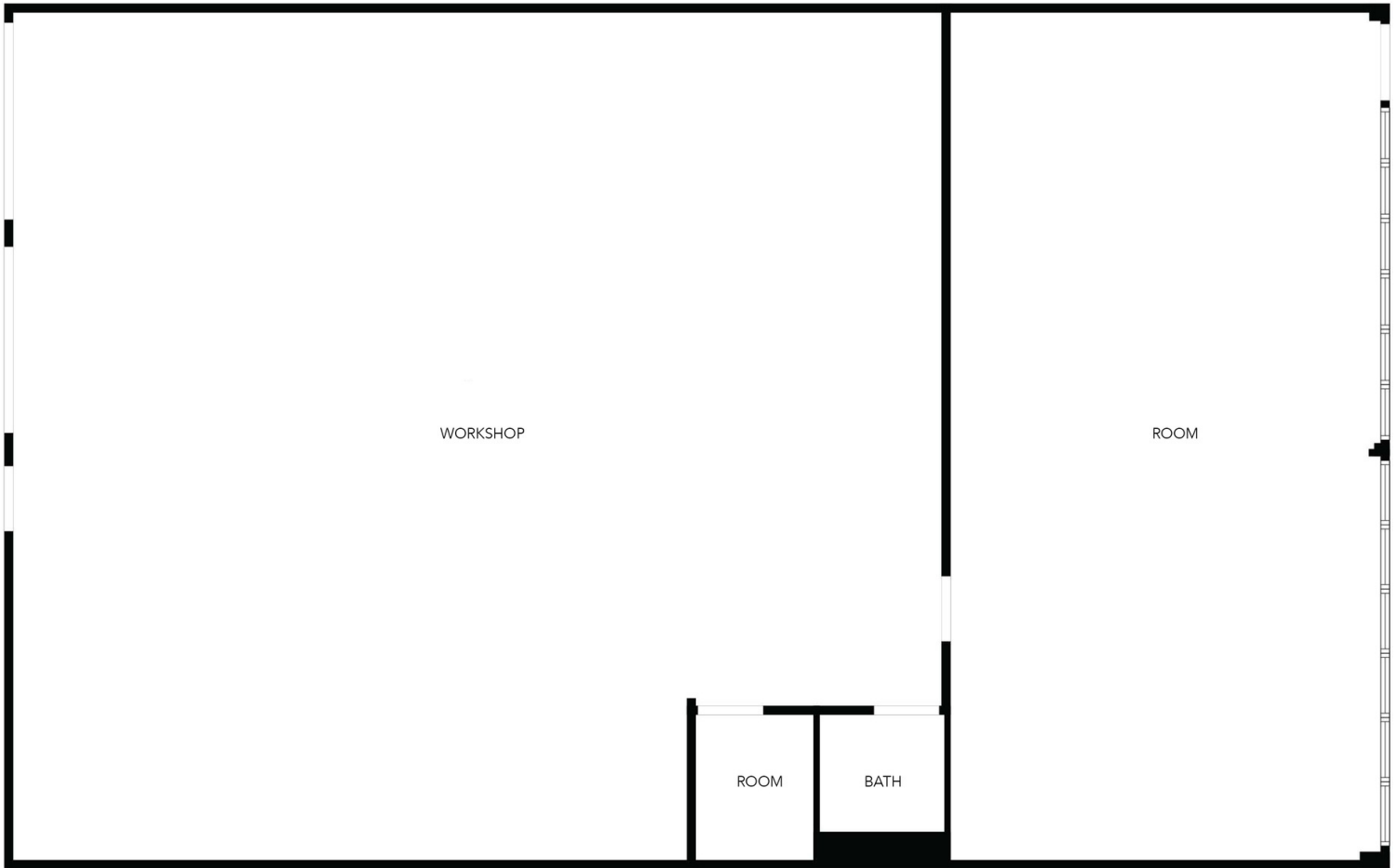


**LEASE INFORMATION**

Lease Type:	NNN	Lease Term:	Negotiable
Total Space:	4,000 SF	Lease Rate:	Call For Info

**AVAILABLE SPACES**

SUITE	TENANT	SIZE (SF)	LEASE TYPE	LEASE RATE	DESCRIPTION
Suite 100	Available	4,000 SF	NNN	Call For Info	1,200 SF of Showroom / Office space and Two (2) 12' x 14' Grade Level Doors



SUITE 100 - 4,000 SF - AVAILABLE NOW