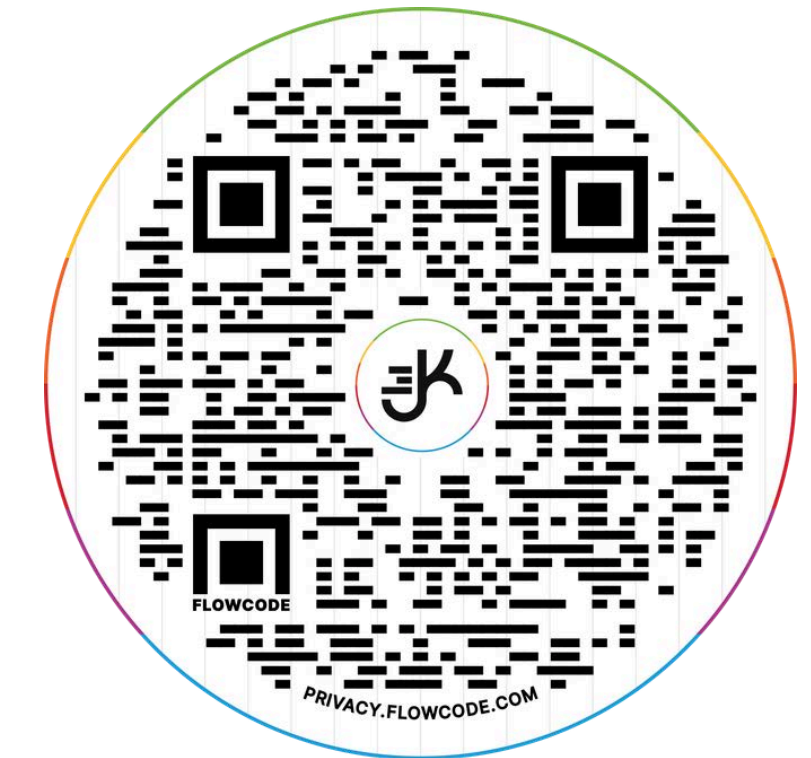




186 AVENUE B

BTWN 11TH & 12TH STREETS

ALPHABET CITY - EAST VILLAGE



SCAN OR CLICK FOR 360 TOUR



WWW.J3K.COM

186 AVENUE B

BETWEEN 11TH & 12TH STREETS | EV

SIZE (approx.)

1,000 SF
+ 600 SF Backyard + Basement

NEIGHBORS

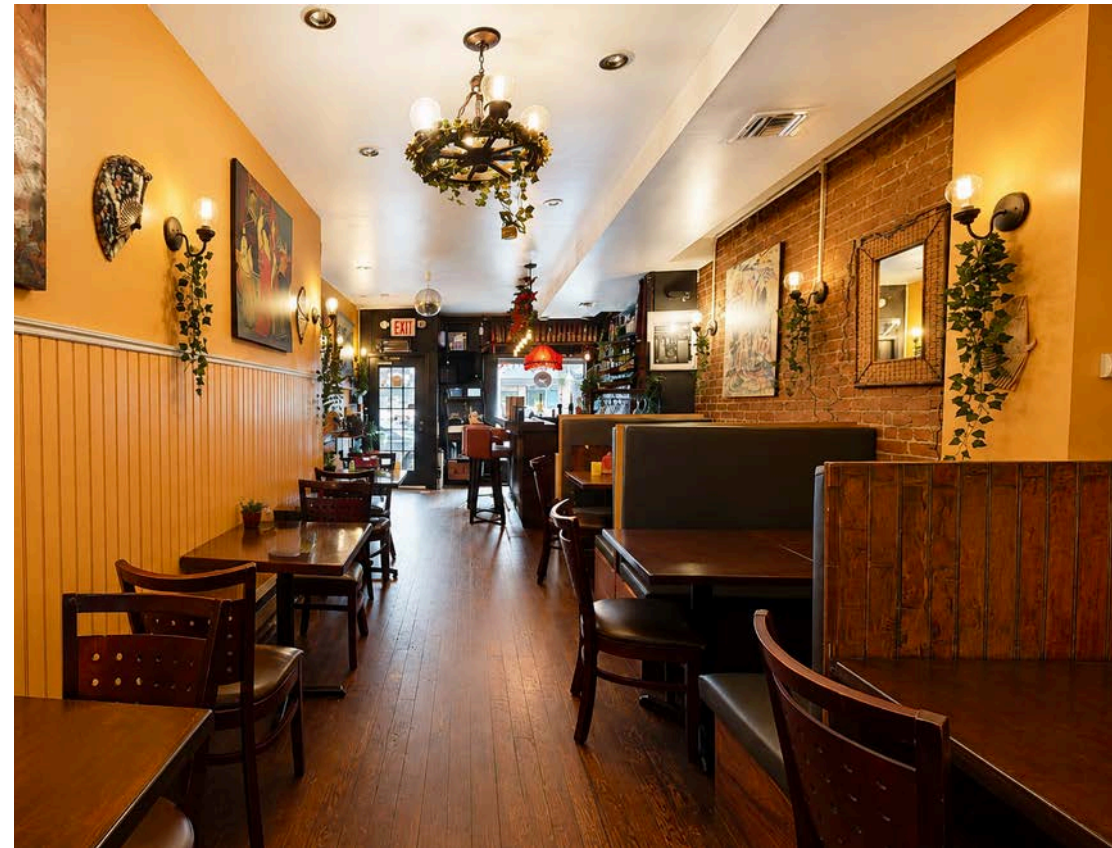
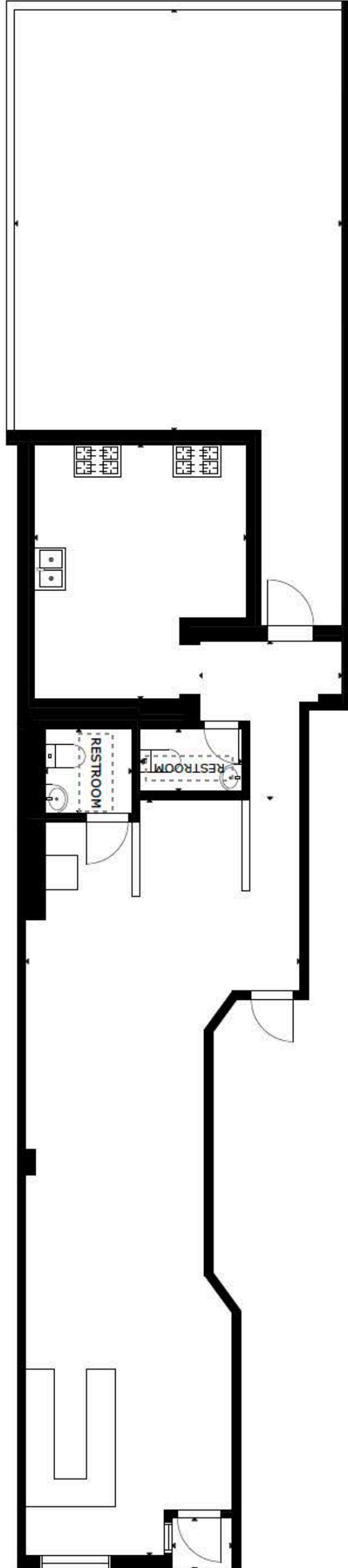
The York, Ama Raw, Bar, Haile Bistro, Frangos Peri Peri, Salumeria Rosi, Tompkins Square Park, Holy Cow Burgers, Oddball, Mona's, Hi- Note Radio, Pavlo Mochi, East Village Vintage Collective, GNIGHTON, Pop's Pizza

TRANSPORTATION

4 5 6 L

HIGHLIGHTS

- Restaurant + Liquor License
- Two Bathrooms + Basement
- Blade Signage
- Outdoor Garden Seating
- Vented with Gas + Full Kitchen



For more information please contact:

JON KAMALI

646-450-1859

jon@j3k.com

JUSTIN KAMALI

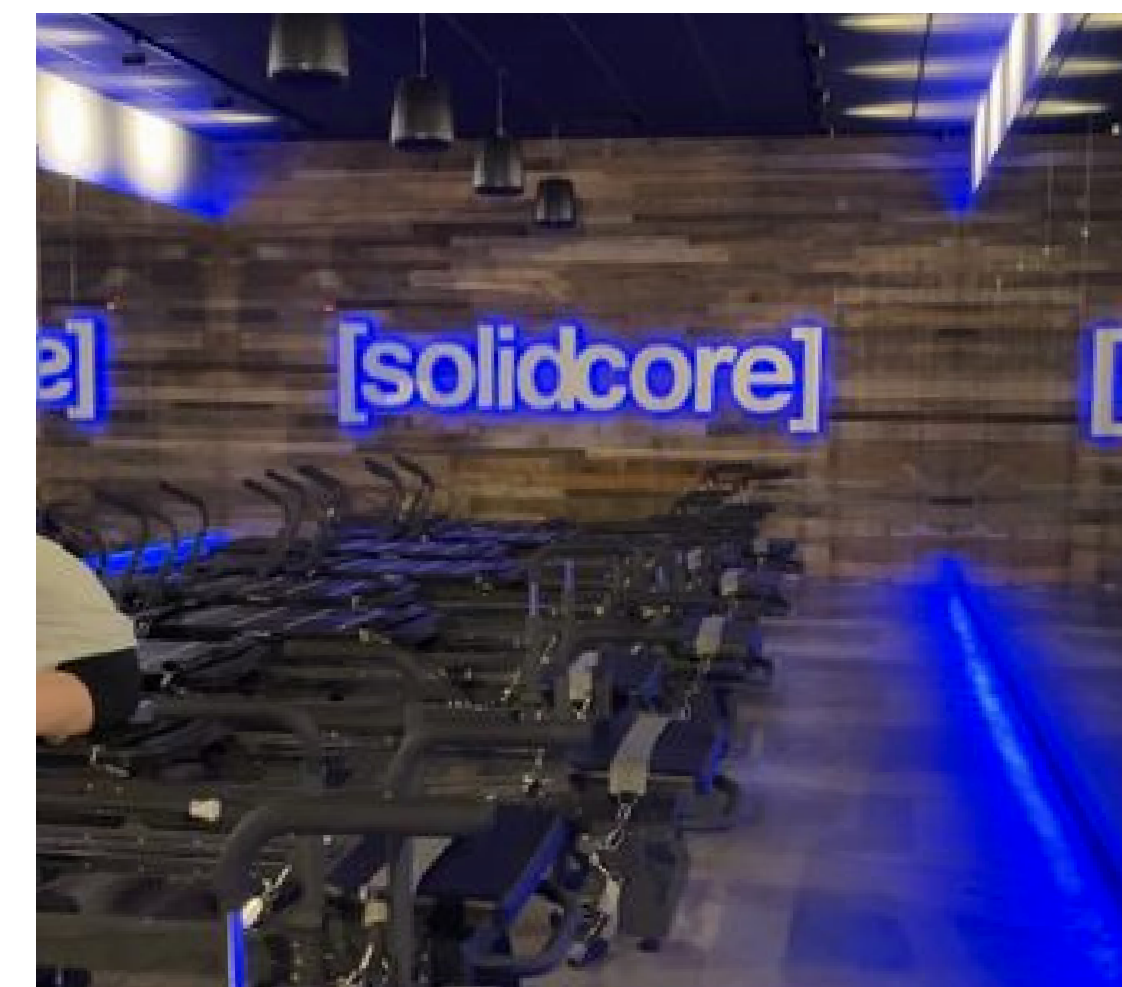
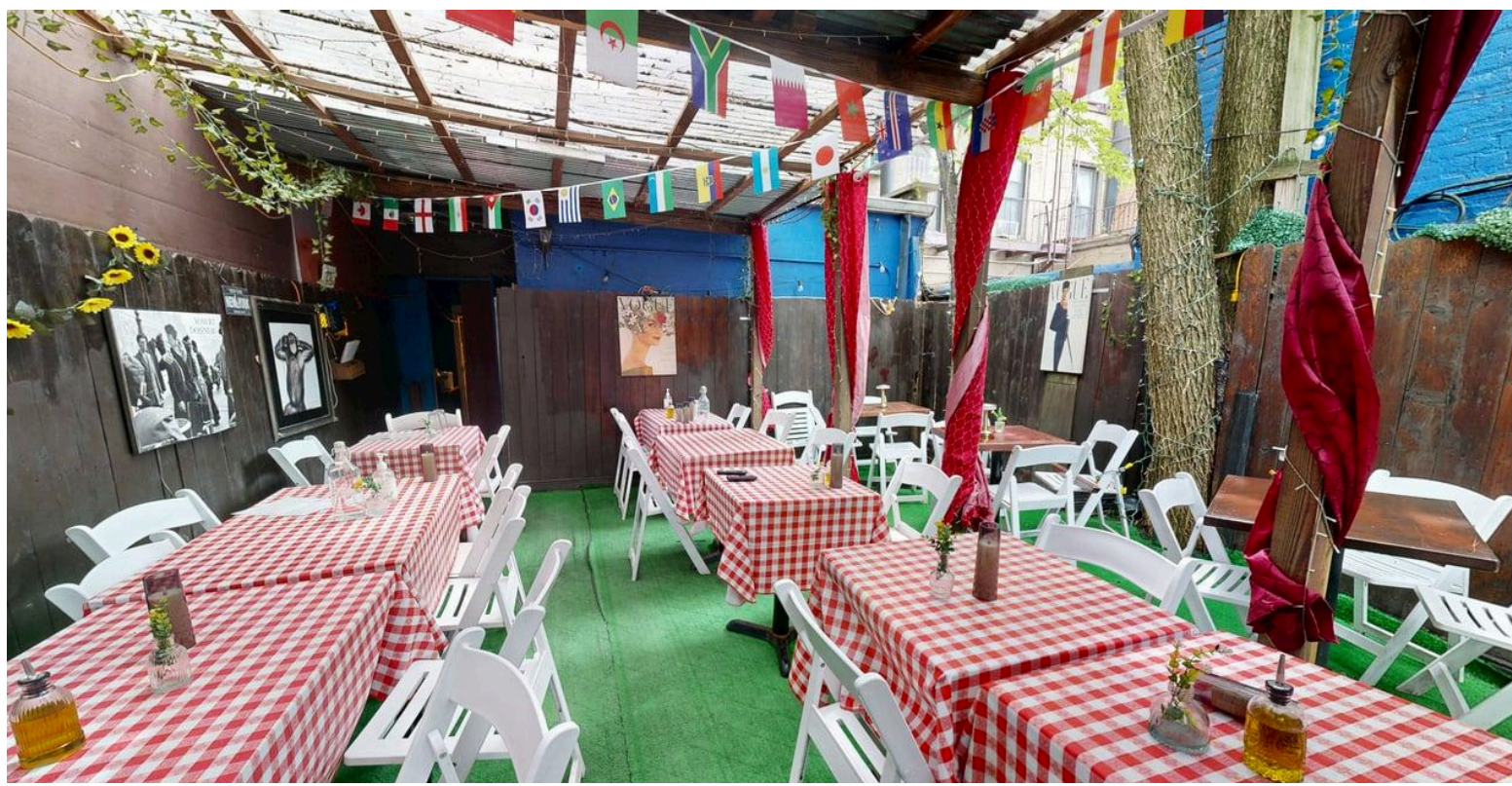
516-306-2518

justin@j3k.com



WWW.J3K.COM

ALPHABET CITY-EAST VILLAGE



For more information please contact:

JON KAMALI

646-450-1859

jon@j3k.com

JEREMY KAMALI

646-450-5985

jeremy@j3k.com

JUSTIN KAMALI

516-306-2518

justin@j3k.com



WWW.J3K.COM