

# ELIZABETHTON HWY INDUSTRIAL

2695 Elizabethton Highway  
Johnson City, TN 37601

## Location

Between the intersections of Taylortown Road and West Elk Avenue on Elizabethton Highway

## Available for Lease

Building A: 2,000 SF - \$10/SF/year NNN

## Highlights

Brand new construction

(2) 14' roll-up doors & 2 side doors

15' eaves, 16' max. ceiling height

Office and restroom

Gravel laydown yard

Convenient to Johnson City and Elizabethton

Approx. 4 miles from I-26, exit 23

## Traffic Counts

Elizabethton Hwy: 6,259 (2022)

W Elk Ave: 30,319 (2022)

## Demographics

(2024 Est.)	5 mile	15 mile	25 mile
Population	55,628	217,300	430,652
Median HH Income	\$49,850	\$61,429	\$58,452
Median Age	40.6	43.2	44.6

## Contact

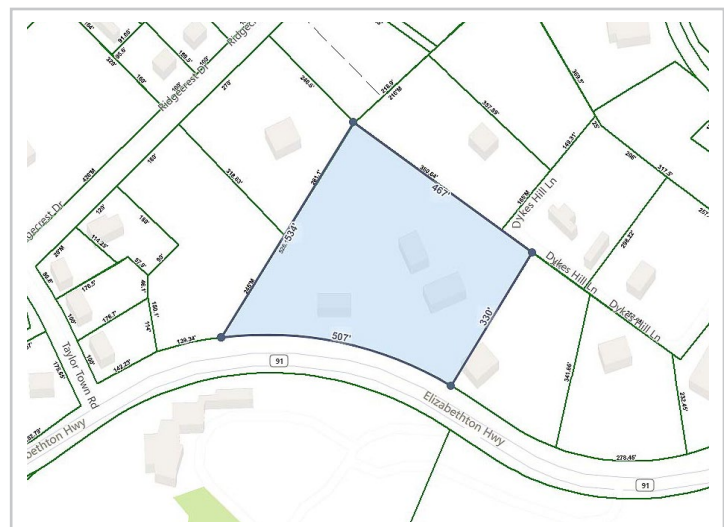
**Shannon K. Castillo**

Affiliate Broker

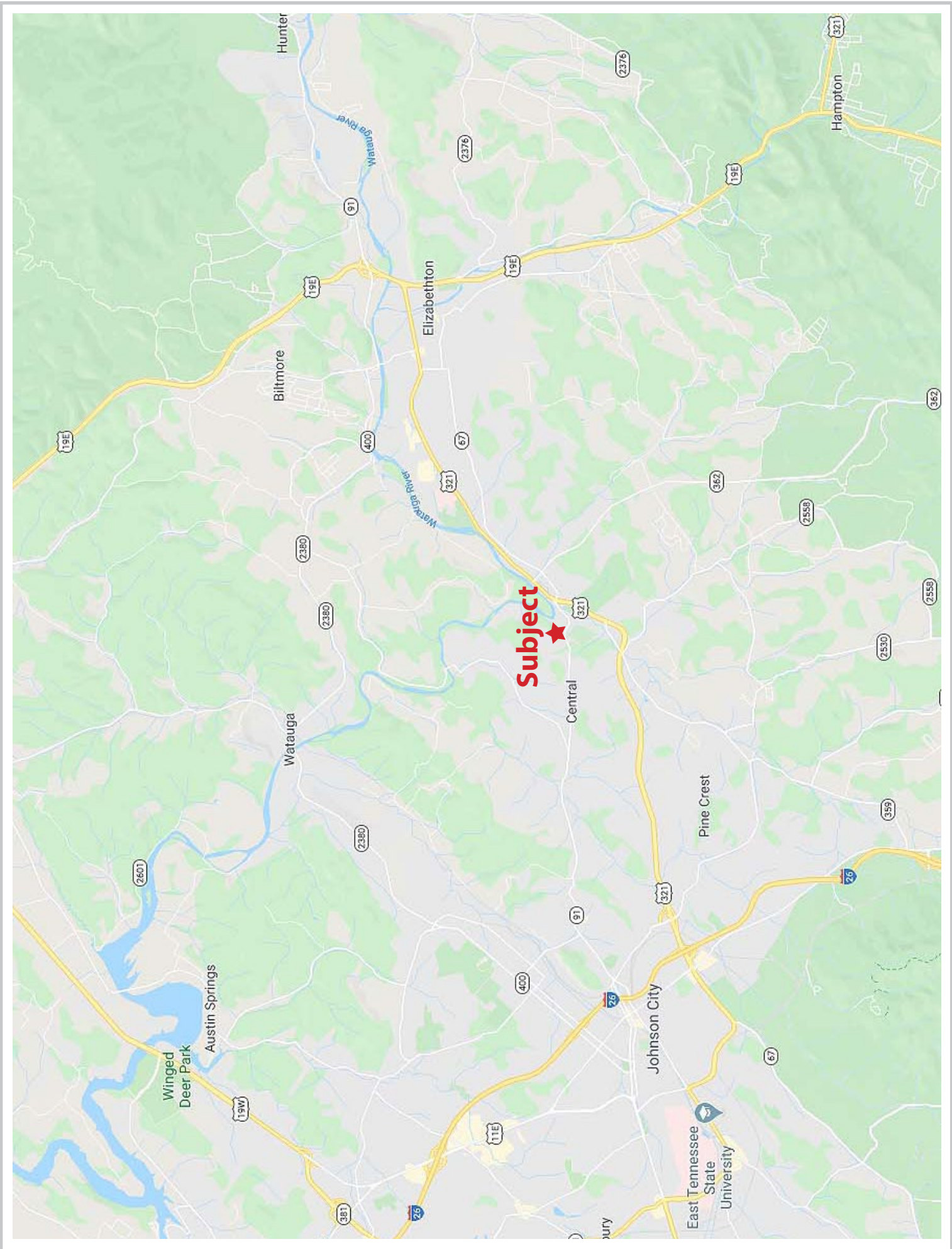
shannon@mitchcox.com

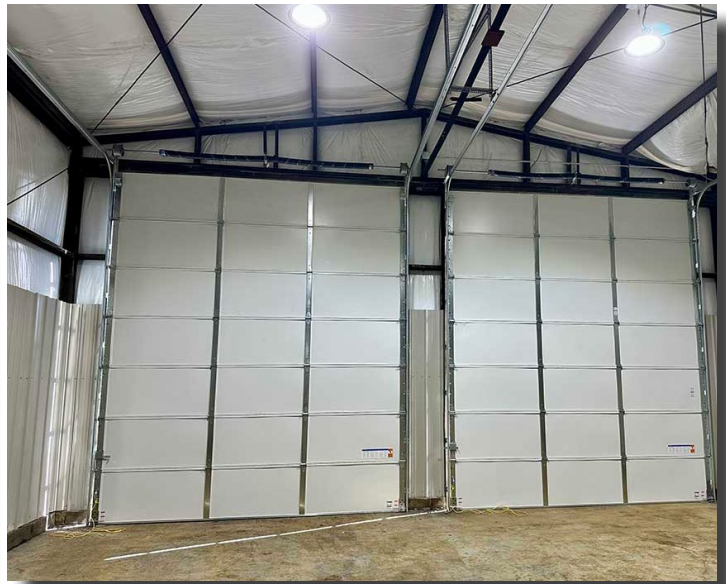
📞 423-282-6582 | 📠 423-282-5903

www.mitchcox.com









**MITCH COX**  
REALTOR, INC.

2304 Silverdale Drive, Suite 200, Johnson City, TN 37601  
423-282-6582 (o) 423-282-5903 (f) [www.mitchcox.com](http://www.mitchcox.com)