

8025 Arjons Drive

San Diego, CA 92126

Property Features

- Lot Size: ±2.08 Acres
- Building Size: ±9,000 SF
- Warehouse Area: ±7,000 SF
- Showroom/Office Area: ±2,000 SF
- Secure Yard with Efficient Dual Access
- Dock High Loading, Multiple Positions
- [Link to Zoning: IL-2-1 \(City of San Diego\)](#)
- Central Miramar Location
- **Call Agent for Lease Rate**



For more
information

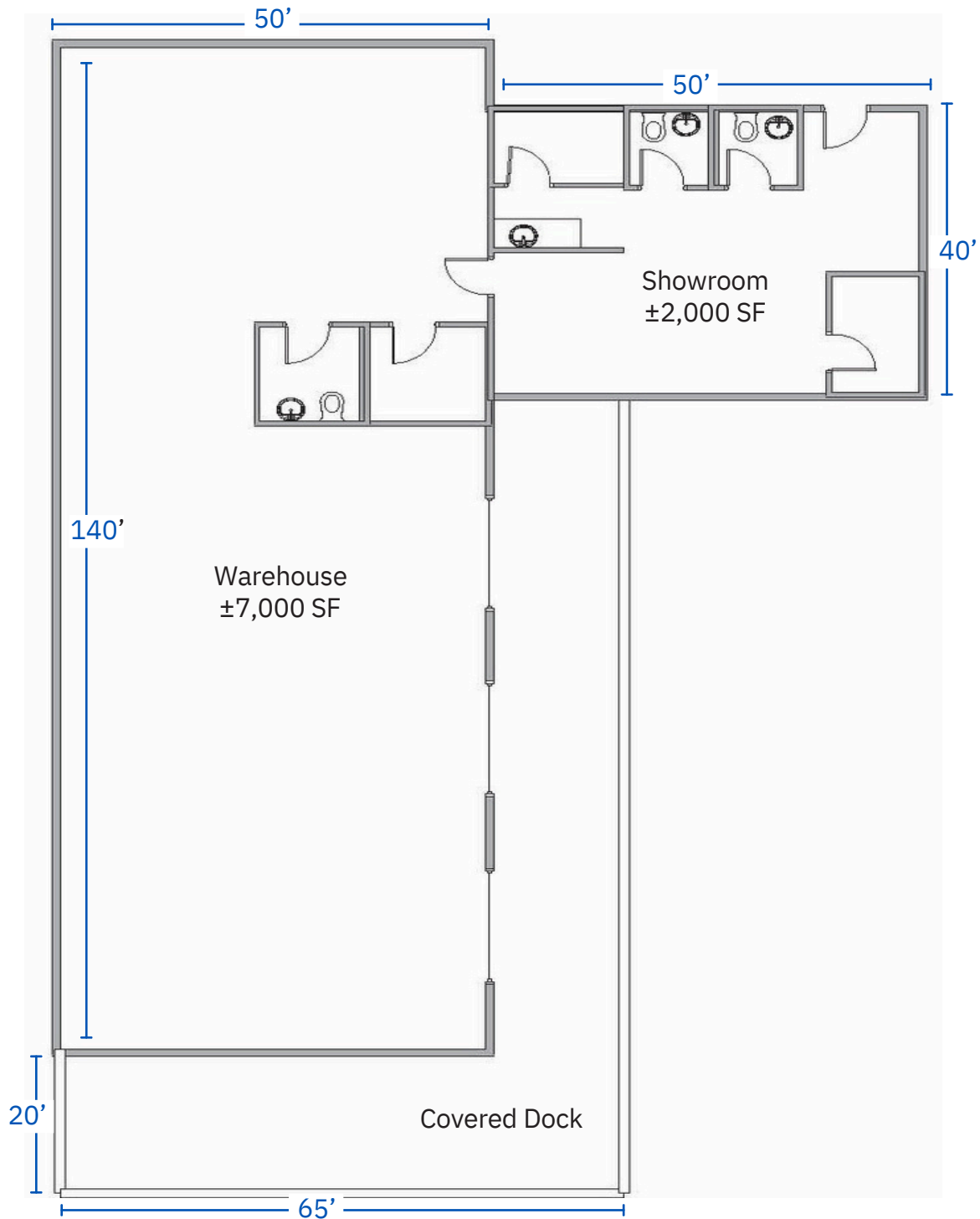
Mark Silverman, SIOR

Executive Vice President
msilverman@naisandiego.com
d 619 241 2336 | c 619 857 2813
license # 00899837

Sarah Anane

Vice President
sanane@naisandiego.com
d 619 241 2342 | c 217 899 5889
license # 01989603

Yard Area with Warehouse For Lease
8025 Arjons Drive
San Diego, CA 92126



For more
information

Mark Silverman, SIOR

Executive Vice President
msilverman@naisandiego.com
d 619 241 2336 | c 619 857 2813
license # 00899837

Sarah Anane

Vice President
sanane@naisandiego.com
d 619 241 2342 | c 217 899 5889
license # 01989603

