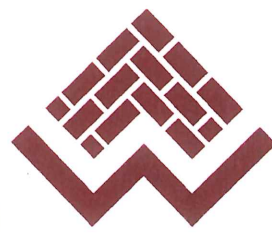


WILEY BROS.



Re: Office - Warehouse Building - **9,076 Square Feet**
8464 Endicott Lane
BUCKNER PARK INDUSTRIAL DISTRICT
Dallas, Texas

This "free standing" all masonry building will be available JULY 2024. A **FLOOR PLAN** of the space is on the reverse side of this newsletter. The building is located in the Buckner Park Industrial District of the City of Dallas. Listed below are some of the features of the building.

1. The building contains **9,076 square feet**.
2. The **1,100 square feet** of A/C office space include:
 - A. 3 - Private offices
 - B. Large general office - Reception area
 - C. 2 - Rest rooms
3. Fluorescent lights in warehouse.
4. Warehouse heated with gas fired heaters.
5. 14' Clear height in the warehouse.
6. 2 - Overhead doors (8' x 10') - DOCK HIGH.
7. 1 - Overhead door (12' x 12') - GRADE LEVEL.
8. 14 - Parking spaces - All concrete paving.
9. The building has a fire sprinkler system.

Please contact our office for arrangements to see this space.

Monthly Rental - \$7,600.00 (10.05/SF) based on a 3 year lease.

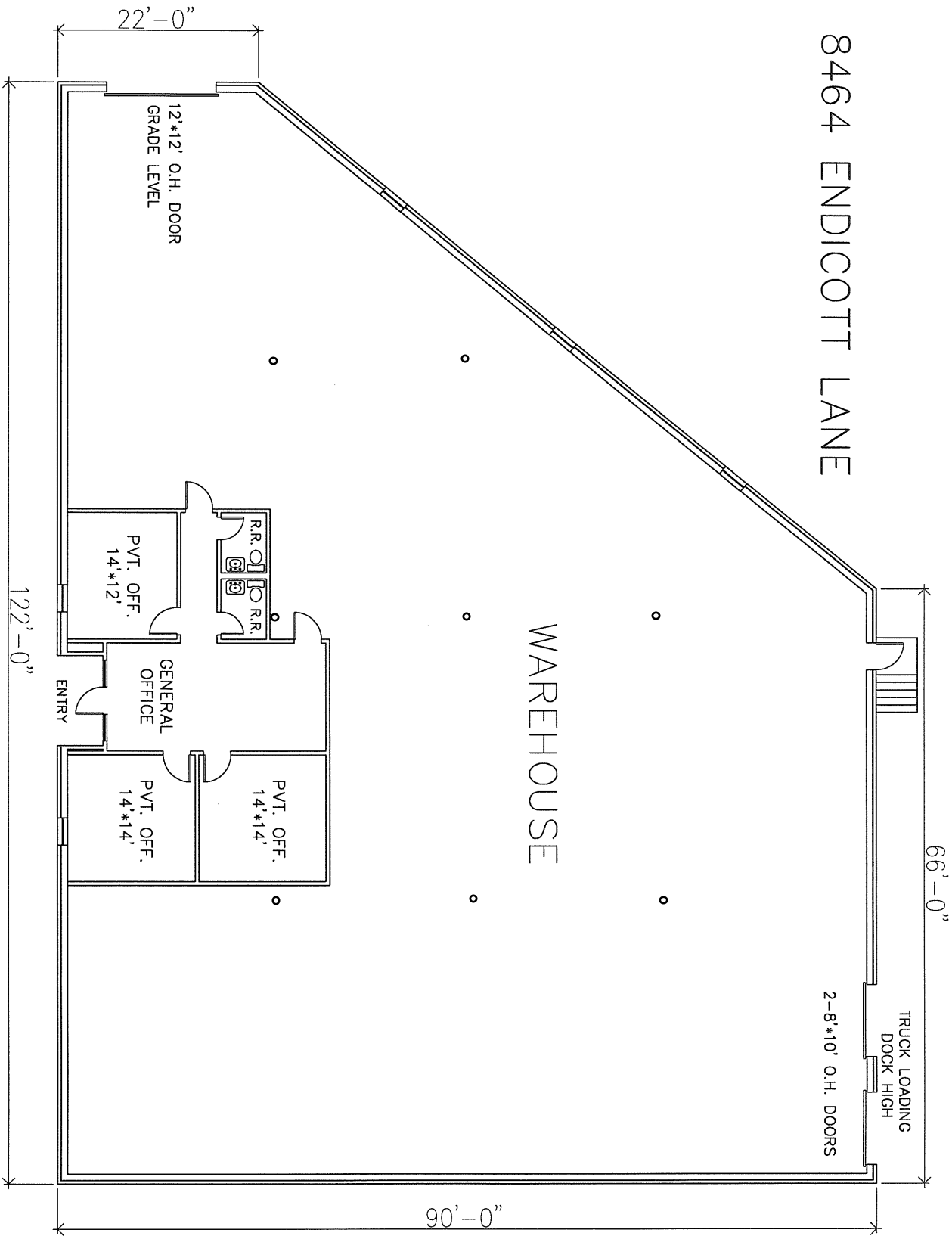
Very truly yours,

WILEY BROS. MANAGEMENT CORP.

By: *James E. Wiley Jr.*

END464-4.325

2803 Virgo Lane, P O Box 541323, Dallas, TX 75354-1323



PROJECT: OFFICE-WAREHOUSE SPACE AT 8464 ENDICOTT LANE	
DESIGNED BY JTW	DATE JUN 11
DRAWN BY GHW	SCALE AS SHOWN
SHEET NO. 1 OF 1	
SHEET	
WILEY BROS.	

PROJECT: OFFICE-WAREHOUSE SPACE AT 8464 ENDICOTT LANE	
DESIGNED BY JTW	DATE JUN 11
DRAWN BY GHW	SCALE AS SHOWN
SHEET NO. 1 OF 1	
SHEET	
WILEY BROS.	

PROJECT: OFFICE-WAREHOUSE SPACE AT 8464 ENDICOTT LANE	
DESIGNED BY JTW	DATE JUN 11
DRAWN BY GHW	SCALE AS SHOWN
SHEET NO. 1 OF 1	
SHEET	
WILEY BROS.	

PROJECT: OFFICE-WAREHOUSE SPACE AT 8464 ENDICOTT LANE	
DESIGNED BY JTW	DATE JUN 11
DRAWN BY GHW	SCALE AS SHOWN
SHEET NO. 1 OF 1	
SHEET	
WILEY BROS.	