



HISTORIC DILL BUILDING

2020-A E. FRANKLIN STREET, RICHMOND, VA 23223

NOW LEASING!



CREATIVE OFFICE SPACE IN BOOMING SHOCKOE BOTTOM / CHURCH HILL AREA

FEATURES

- ▶ Four private offices, conference room, reception area, work room, dual restrooms, storage
- ▶ Abundant natural light, tall windows in every office, reception and conference room
- ▶ Access to property amenities, rooftop pool, lounge and 24-hour fitness center
- ▶ Professionally-managed by local, on-site property management firm
- ▶ Off-street parking available, garage and surface lot
- ▶ Central location with excellent access to main interstates I-95, I-64 and I-195

SUMMARY

Available Space Office / Medical 2,108 sq. ft.

In the heart of Richmond's Shockoe Bottom...

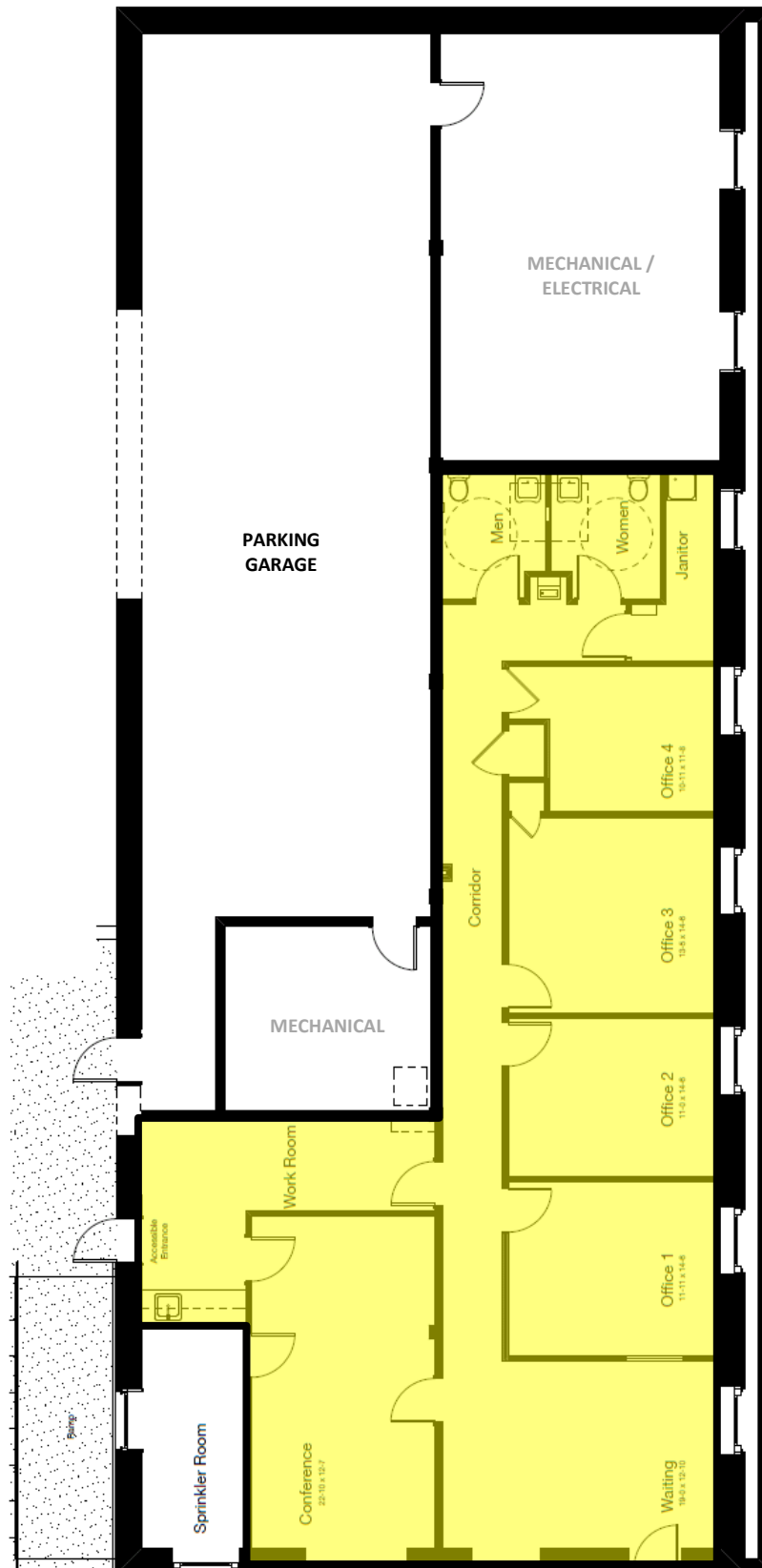
The Dill Building is a historic warehouse transformed into a beautiful mixed-use community of 53 luxury apartments and one street level office suite with dedicated, off-street parking. Once the tobacco headquarters of the South, Shockoe Bottom is now home to urban, loft-style apartment homes, trendy shops and is just steps away from the riverfront and Canal Walk.

CONTACT

Sean Eichert, (804) 419-2295
seichert@realestateservicesco.com, realestateservicesco.com

Real Estate Services Co.
13281 River's Bend Blvd, Suite 201, Chester, VA 23836

FLOOR PLAN



AERIAL MAP

