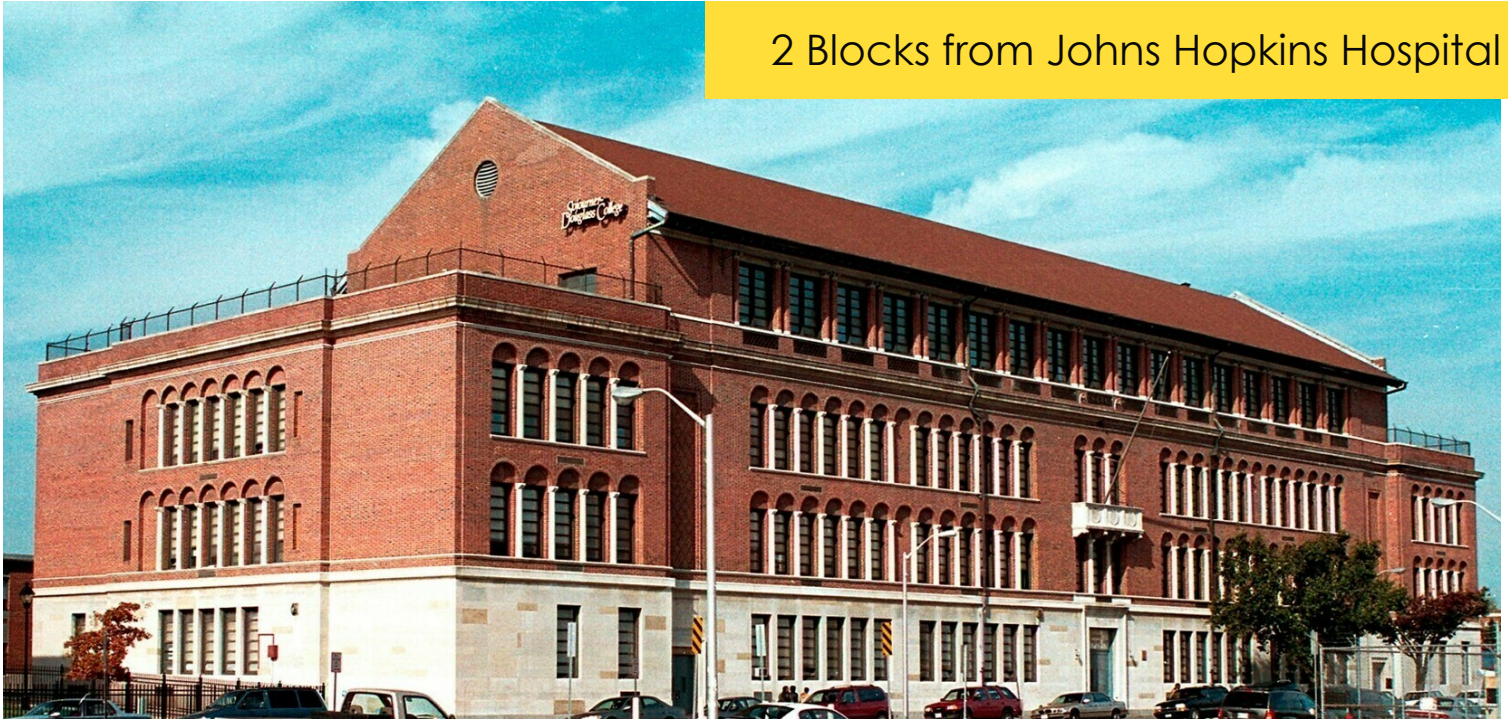


# ADAPTIVE RE-USE PROJECT FOR SALE SOJOURNER DOUGLASS COLLEGE CAMPUS

200 N Central Ave, Baltimore, MD 21202

2 Blocks from Johns Hopkins Hospital



## LISTING DATA

**AVAILABLE SF:** 153,447 SF  
**LAND ACREAGE:** 2.73 Acres

## ECONOMIC DATA

**SALE PRICE:** \$8,899,926

## PROPERTY INFORMATION

**COUNTY:** Baltimore  
**MARKET:** Baltimore City  
**SUBMARKET:** Johns Hopkins Hospital

## BUILDING DATA

**TOTAL BUILDING SF:** 153,447 SF  
**YEAR BUILT:** 1923  
**ZONING:** EC-2

## PROPERTY OVERVIEW

Unique opportunity to acquire one of the few remaining large scale projects in Baltimore. Site is adaptable for a variety of uses and this is great for investors seeking an adaptive re-use or redevelopment that could include market rate residential, affordable housing, corporate housing, office uses, life sciences, and array of auxiliary uses.

## LOCATION OVERVIEW

Centrally located and anchored between downtown Baltimore and the Johns Hopkins Medical Institution.

## PROPERTY HIGHLIGHTS

- Investment opportunity for redevelopment or adaptive re-use
- 4 stories 12'6" slab to slab
- Adaptable for a variety of uses
- Large parking field
- In the heart of the widely acclaimed \$1B Perkins/ Somerset/ Oldtown Redevelopment

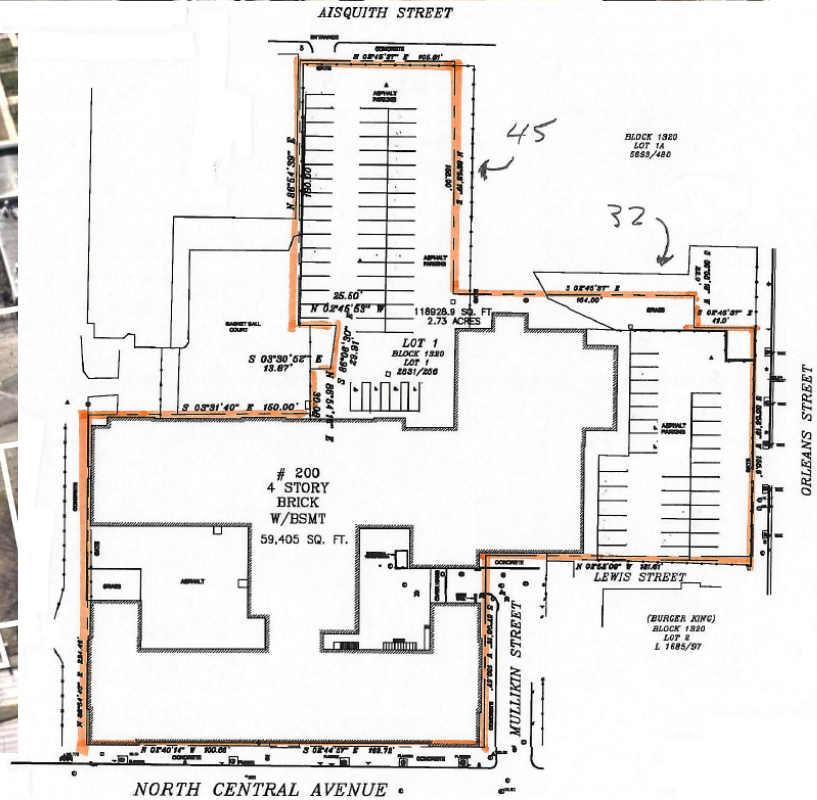
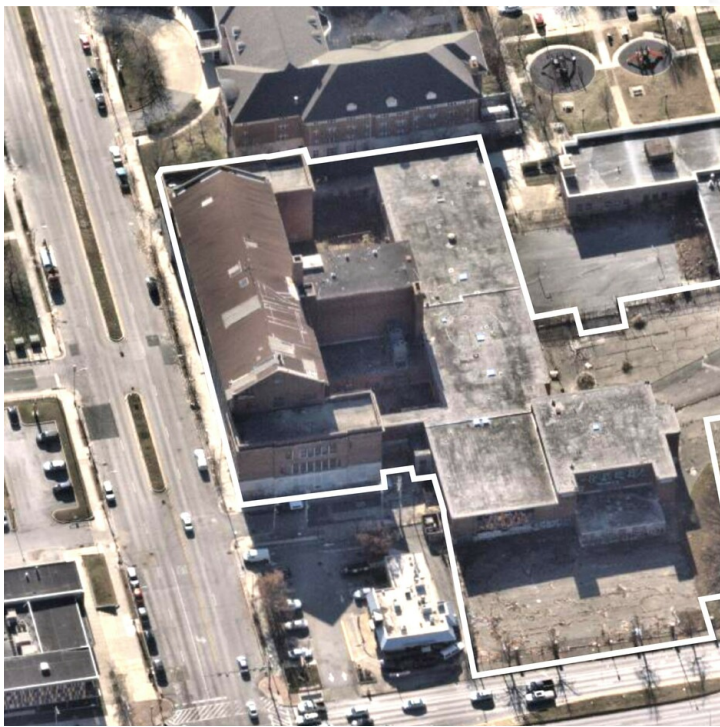
**Steve Weiss**  
Senior Vice President  
443.741.4051  
sweiss@lee-associates.com

**Gideon Price**  
Associate  
410.630.4793  
gprice@lee-associates.com

All information furnished regarding property for sale, rental or financing is from sources deemed reliable, but no warranty or representation is made to the accuracy thereof and same is submitted to errors, omissions, change of price, rental or other conditions prior to sale, lease or financing or withdrawal without notice. No liability of any kind is to be imposed on the broker herein.

# ADAPTIVE RE-USE PROJECT FOR SALE SOJOURNER DOUGLASS COLLEGE CAMPUS

200 N Central Ave, Baltimore, MD 21202



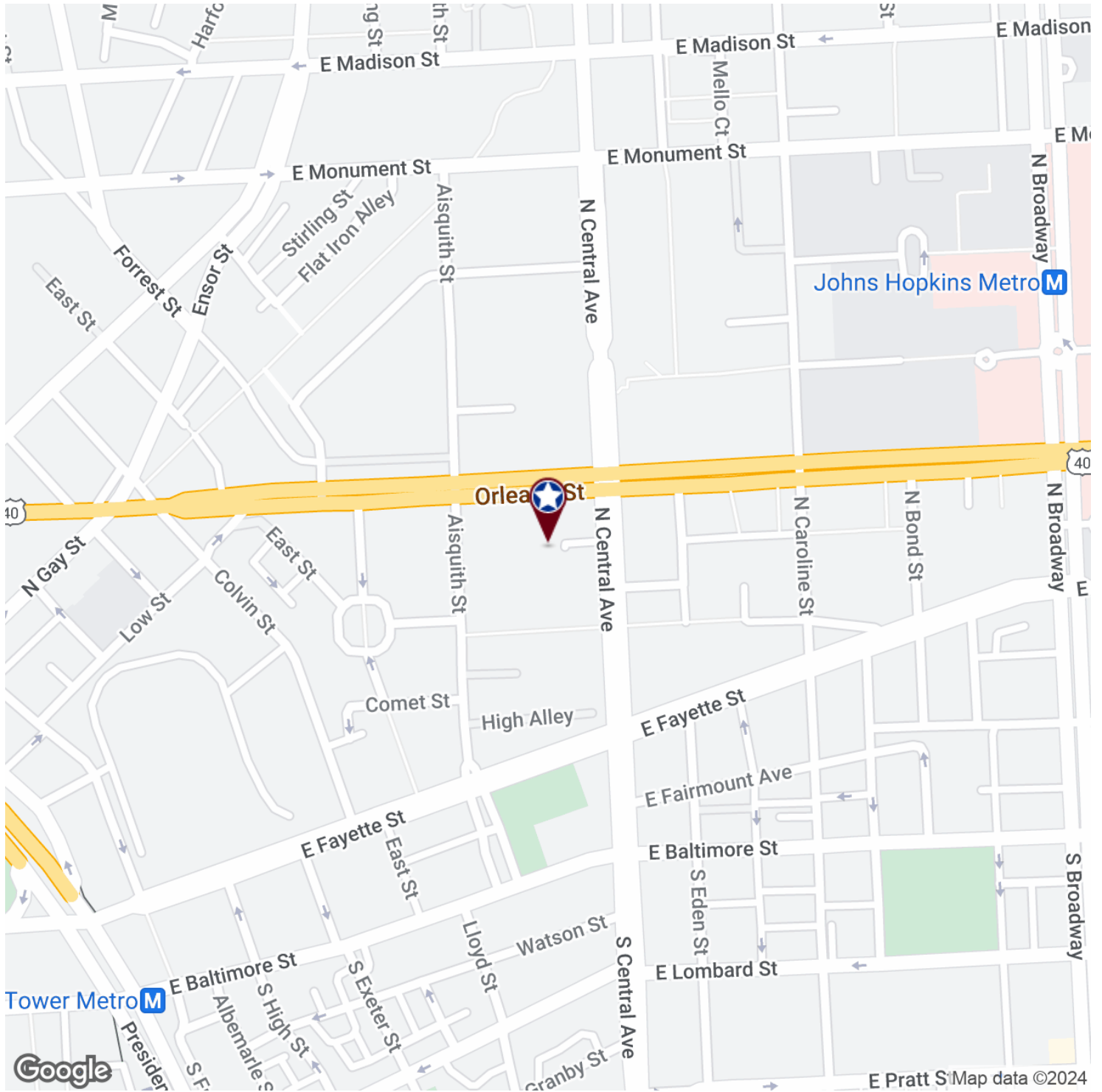
**Steve Weiss**  
Senior Vice President  
443.741.4051  
sweiss@lee-associates.com

**Gideon Price**  
Associate  
410.630.4793  
gprice@lee-associates.com

All information furnished regarding property for sale, rental or financing is from sources deemed reliable, but no warranty or representation is made to the accuracy thereof and same is submitted to errors, omissions, change of price, rental or other conditions prior to sale, lease or financing or withdrawal without notice. No liability of any kind is to be imposed on the broker herein.

# ADAPTIVE RE-USE PROJECT FOR SALE SOJOURNER DOUGLASS COLLEGE CAMPUS

200 N Central Ave, Baltimore, MD 21202



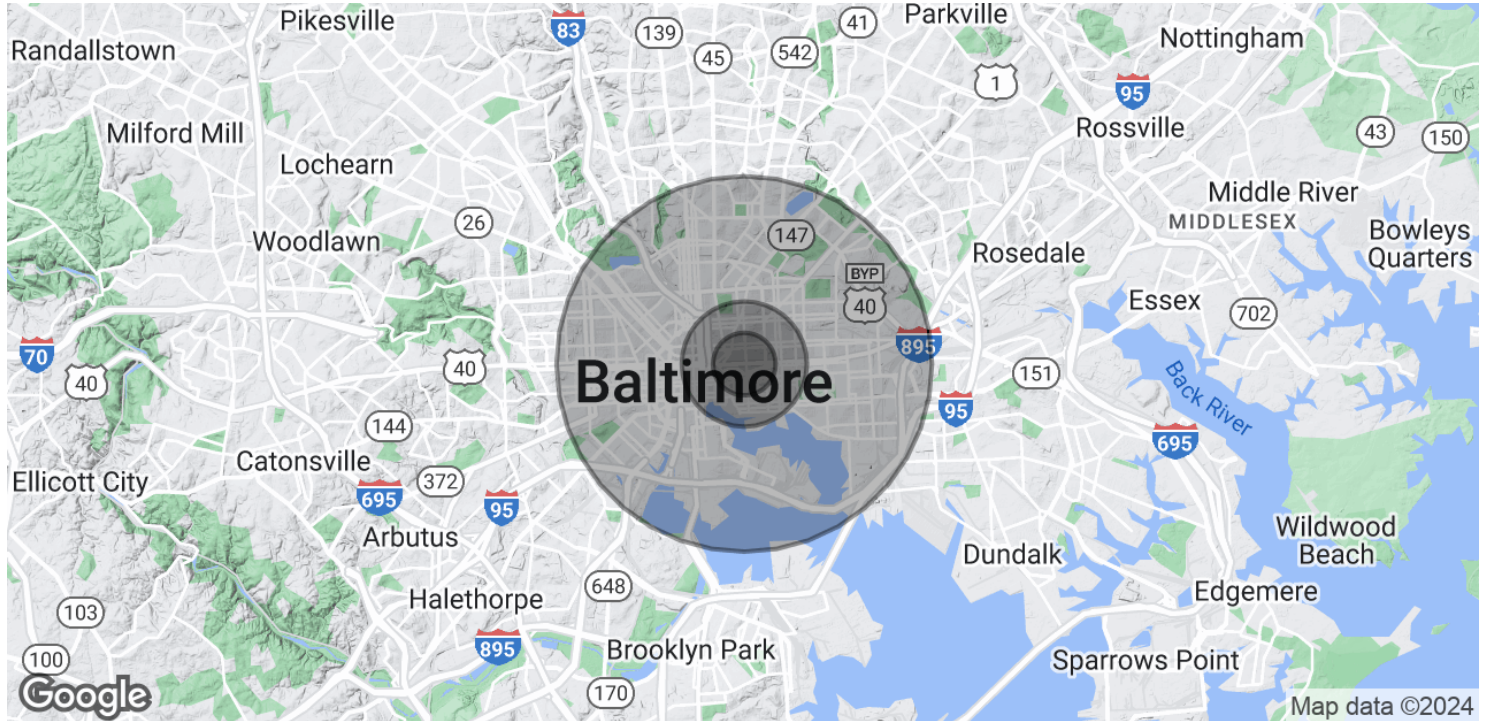
**Steve Weiss**  
Senior Vice President  
443.741.4051  
sweiss@lee-associates.com

**Gideon Price**  
Associate  
410.630.4793  
gprice@lee-associates.com

All information furnished regarding property for sale, rental or financing is from sources deemed reliable, but no warranty or representation is made to the accuracy thereof and same is submitted to errors, omissions, change of price, rental or other conditions prior to sale, lease or financing or withdrawal without notice. No liability of any kind is to be imposed on the broker herein.

# ADAPTIVE RE-USE PROJECT FOR SALE SOJOURNER DOUGLASS COLLEGE CAMPUS

200 N Central Ave, Baltimore, MD 21202



## POPULATION

	0.5 MILES	1 MILE	3 MILES
Total Population	9,534	43,977	254,466
Average Age	36.4	33.9	35.4
Average Age (Male)	36.2	34.0	34.7
Average Age (Female)	33.5	33.5	36.8

## HOUSEHOLDS & INCOME

	0.5 MILES	1 MILE	3 MILES
Total Households	4,108	24,501	138,010
# of Persons per HH	2.3	1.8	1.8
Average HH Income	\$39,582	\$63,503	\$62,905
Average House Value	\$111,600	\$172,289	\$194,876

\* Demographic data derived from 2020 ACS - US Census

**Steve Weiss**  
Senior Vice President  
443.741.4051  
sweiss@lee-associates.com

**Gideon Price**  
Associate  
410.630.4793  
gprice@lee-associates.com

All information furnished regarding property for sale, rental or financing is from sources deemed reliable, but no warranty or representation is made to the accuracy thereof and same is submitted to errors, omissions, change of price, rental or other conditions prior to sale, lease or financing or withdrawal without notice. No liability of any kind is to be imposed on the broker herein.