

For Lease

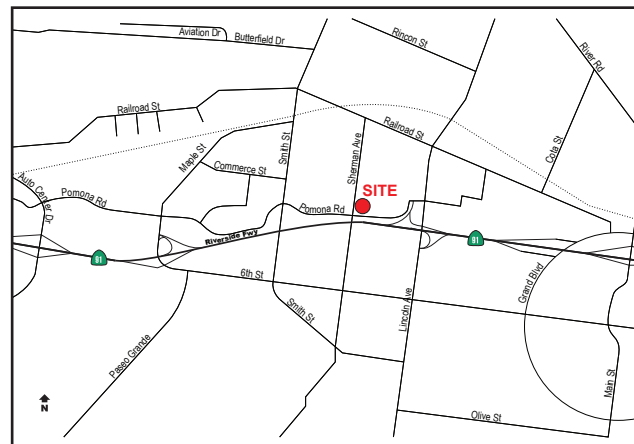
Corona Lewis Business Center 1,920 SF Office/Showroom Unit For Lease

1251 Pomona Road Unit 104, Corona, CA



Property Details

- ±500 SF of Office Space
- ±1,420 SF of Warehouse Space
- 1 GL Door
- High Identity Building Signage
- 2:1 Parking Ratio
- 14' Warehouse Height
- 100 Amps Electrical Service
- Freeway Visibility
- Immediate Access to Riverside (91) Freeway



Reed Rutter
ASSOCIATE
949.933.5744
RRutter@voitco.com
Lic. #02153762

Michael Zehner
SENIOR VICE PRESIDENT
714.935.2328
mczehner@voitco.com
Lic. # 01917963

Voit
REAL ESTATE SERVICES

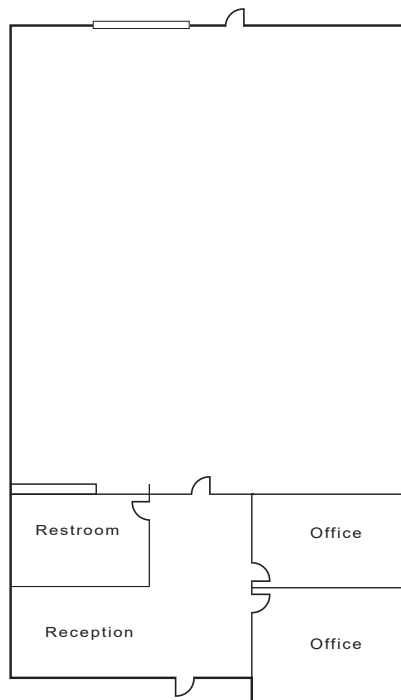
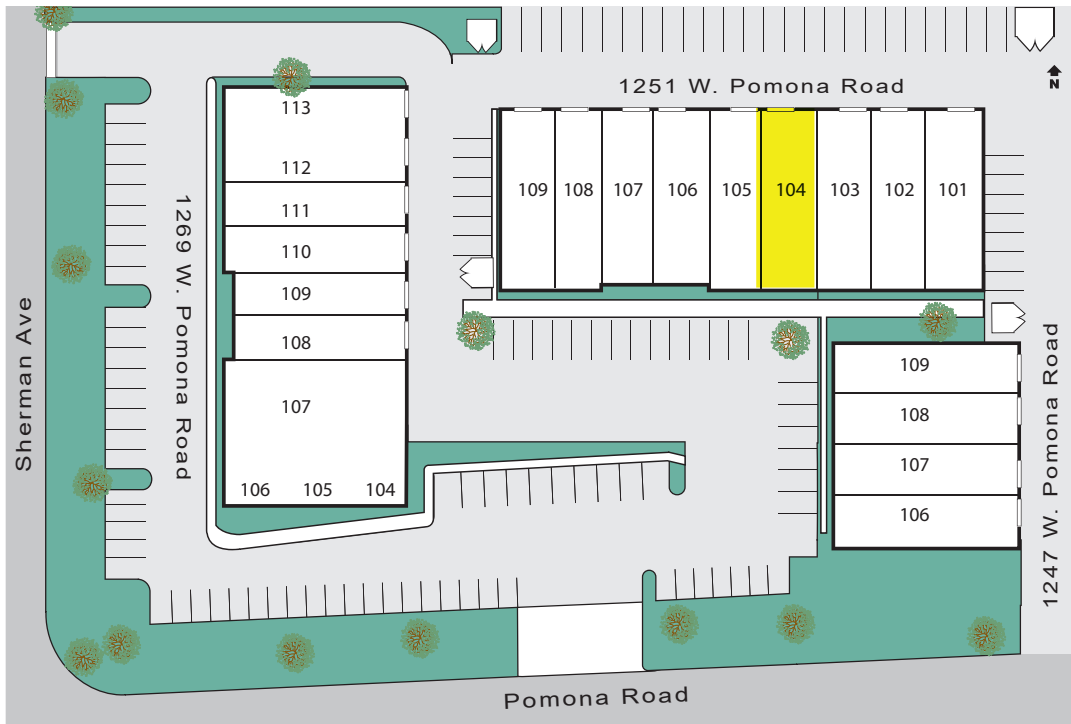
2020 Main Street, Suite 100 | Irvine, California 92614 | 949.851.5100 | 949.261.9092 Fax | Lic #01991785 | www.VoitCo.com

Licensed as Real Estate Salespersons by the CA DRE. The information contained herein has been obtained from sources we deem reliable. While we have no reason to doubt its accuracy, we do not guarantee it. ©2023 Voit Real Estate Services, Inc. All Rights Reserved. License #01991785.

For Lease

Corona Lewis Business Center 1,920 SF Office/Showroom Unit For Lease

1251 Pomona Road Unit 104, Corona, CA



Reed Rutter
ASSOCIATE
949.933.5744
RRutter@voitco.com
Lic. #02153762

Michael Zehner
SENIOR VICE PRESIDENT
714.935.2328
mczehner@voitco.com
Lic. # 01917963

Voit
REAL ESTATE SERVICES

2020 Main Street, Suite 100 | Irvine, California 92614 | 949.851.5100 | 949.261.9092 Fax | Lic #01991785 | www.VoitCo.com

Licensed as Real Estate Salespersons by the CA DRE. The information contained herein has been obtained from sources we deem reliable. While we have no reason to doubt its accuracy, we do not guarantee it. ©2023 Voit Real Estate Services, Inc. All Rights Reserved. License #01991785.