

COMMERCIAL PROPERTY FOR SALE



REAL ESTATE SERVICES
TRUSTED SINCE 1962

3850 FOOTHILL BOULEVARD

GLENDALE, CA 91214

KRIS HONS

CHIEF OPERATING OFFICER
O: 818.956.7001 X127 C: 626.826.2431
KHONS@STEVENSONREALESTATE.COM
CALDRE #01807261

DAVID "RANDY" STEVENSON

PRESIDENT
O: 818.956.7001 X155 C: 818.634.3281
RANDYS@STEVENSONREALESTATE.COM
CALDRE #01228475

1111 NORTH BRAND BOULEVARD
SUITE 250
GLENDALE, CA 91202
STEVENSONREALESTATE.COM
CALDRE #00983560

3850 FOOTHILL BOULEVARD

GLENDALE, CA 91214



OFFERING SUMMARY

Sales Price:	\$3,450,000
Building Size:	6,331 SF (Buyer to verify)
Lot Size:	29,169 SF
Zoning:	CH (Commercial Hillside)
Price/SF:	\$544.94
APN:	5604-012-001

PROPERTY OVERVIEW

This is an outstanding opportunity to acquire a mixed-use property that consists of four (4) separate buildings in the heart of the Glendale foothills.

Enterprise Rent-A-Car occupies a retail building that is approximately 2,216 square feet. It has a NNN lease and is in the middle of a three-year option that expires December 31, 2027. It has an additional three-year option, and the rent for the option will be at fair market value.

Campbell's Automotive Repair Service occupies an automotive building that is approximately 2,209 square feet and has four (4) bays. It has a modified gross lease and is in the middle of a two-year lease that expires October 1, 2026. It has an option for two additional years that expires October 1, 2028.

There are two single-family homes on the property that are leased for one year commencing October 1, 2025. One house is 1,156 square feet and the other house is 750 square feet. Both houses have dedicated parking spaces.

Contact broker for financial information.

DISCLAIMER: All information provided herein has been furnished from sources which we deem reliable, but for which we assume no liability, expressed or implied. Interested parties are to conduct an independent investigation of all information related to the property including, but not limited to its physical condition, compliance with applicable governmental requirements, development potential, current or projected financial performance or any party's intended use.



KRIS HONS
CHIEF OPERATING OFFICER
O: 818.956.7001 X127 C: 626.826.2431
KHONS@STEVENSONREALESTATE.COM
CALDRE #01807261

DAVID "RANDY" STEVENSON
PRESIDENT
O: 818.956.7001 X155 C: 818.634.3281
RANDYS@STEVENSONREALESTATE.COM
CALDRE #01228475

1111 NORTH BRAND BOULEVARD
SUITE 250
GLENDALE, CA 91202
STEVENSONREALESTATE.COM
CALDRE #00983560

3850 FOOTHILL BOULEVARD

GLENDALE, CA 91214



KRIS HONS

CHIEF OPERATING OFFICER
O: 818.956.7001 X127 C: 626.826.2431
KHONS@STEVENSONREALESTATE.COM
CALDRE #01807261

DAVID "RANDY" STEVENSON

PRESIDENT
O: 818.956.7001 X155 C: 818.634.3281
RANDYS@STEVENSONREALESTATE.COM
CALDRE #01228475

1111 NORTH BRAND BOULEVARD
SUITE 250
GLENDALE, CA 91202
STEVENSONREALESTATE.COM
CALDRE #00983560

3850 FOOTHILL BOULEVARD

GLENDALE, CA 91214



KRIS HONS

CHIEF OPERATING OFFICER
O: 818.956.7001 X127 C: 626.826.2431
KHONS@STEVENSONREALESTATE.COM
CALDRE #01807261

DAVID "RANDY" STEVENSON

PRESIDENT
O: 818.956.7001 X155 C: 818.634.3281
RANDYS@STEVENSONREALESTATE.COM
CALDRE #01228475

1111 NORTH BRAND BOULEVARD
SUITE 250
GLENDALE, CA 91202
STEVENSONREALESTATE.COM
CALDRE #00983560

3850 FOOTHILL BOULEVARD

GLENDALE, CA 91214



KRIS HONS

CHIEF OPERATING OFFICER
O: 818.956.7001 X127 C: 626.826.2431
KHONS@STEVENSONREALESTATE.COM
CALDRE #01807261

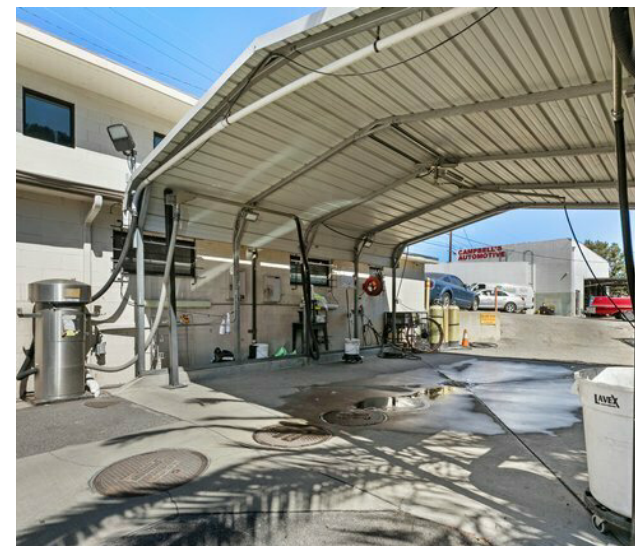
DAVID "RANDY" STEVENSON

PRESIDENT
O: 818.956.7001 X155 C: 818.634.3281
RANDYS@STEVENSONREALESTATE.COM
CALDRE #01228475

1111 NORTH BRAND BOULEVARD
SUITE 250
GLENDALE, CA 91202
STEVENSONREALESTATE.COM
CALDRE #00983560

3850 FOOTHILL BOULEVARD

GLENDALE, CA 91214



KRIS HONS

CHIEF OPERATING OFFICER
O: 818.956.7001 X127 C: 626.826.2431
KHONS@STEVENSONREALESTATE.COM
CALDRE #01807261

DAVID "RANDY" STEVENSON

PRESIDENT
O: 818.956.7001 X155 C: 818.634.3281
RANDYS@STEVENSONREALESTATE.COM
CALDRE #01228475

1111 NORTH BRAND BOULEVARD
SUITE 250
GLENDALE, CA 91202
STEVENSONREALESTATE.COM
CALDRE #00983560

3850 FOOTHILL BOULEVARD

GLENDALE, CA 91214

**KRIS HONS**

CHIEF OPERATING OFFICER
O: 818.956.7001 X127 C: 626.826.2431
KHONS@STEVENSONREALESTATE.COM
CALDRE #01807261

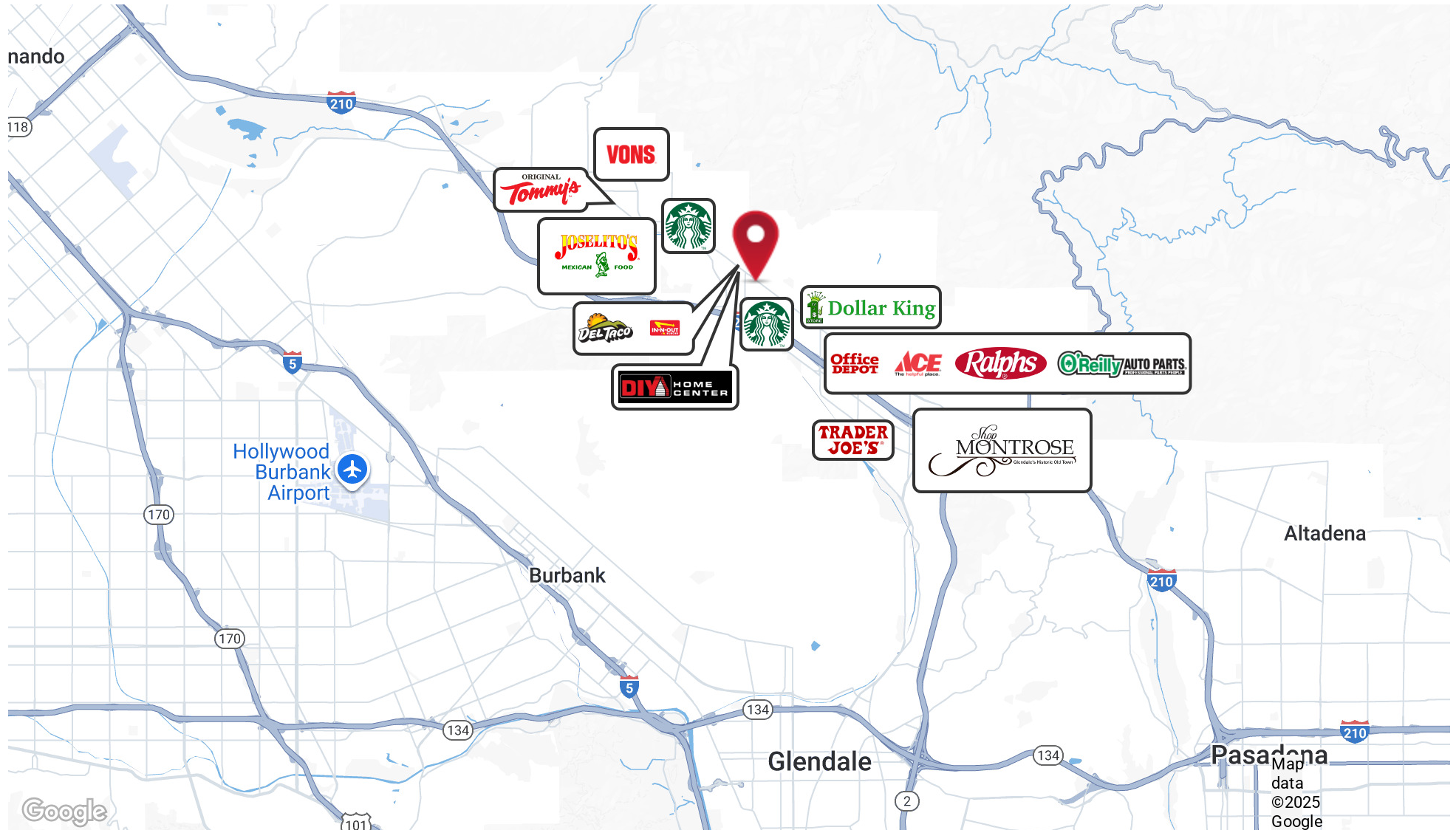
DAVID "RANDY" STEVENSON

PRESIDENT
O: 818.956.7001 X155 C: 818.634.3281
RANDYS@STEVENSONREALESTATE.COM
CALDRE #01228475

1111 NORTH BRAND BOULEVARD
SUITE 250
GLENDALE, CA 91202
STEVENSONREALESTATE.COM
CALDRE #00983560

3850 FOOTHILL BOULEVARD

GLENDALE, CA 91214

**KRIS HONS**

CHIEF OPERATING OFFICER
 O: 818.956.7001 X127 C: 626.826.2431
 KHONS@STEVENSONREALESTATE.COM
 CALDRE #01807261

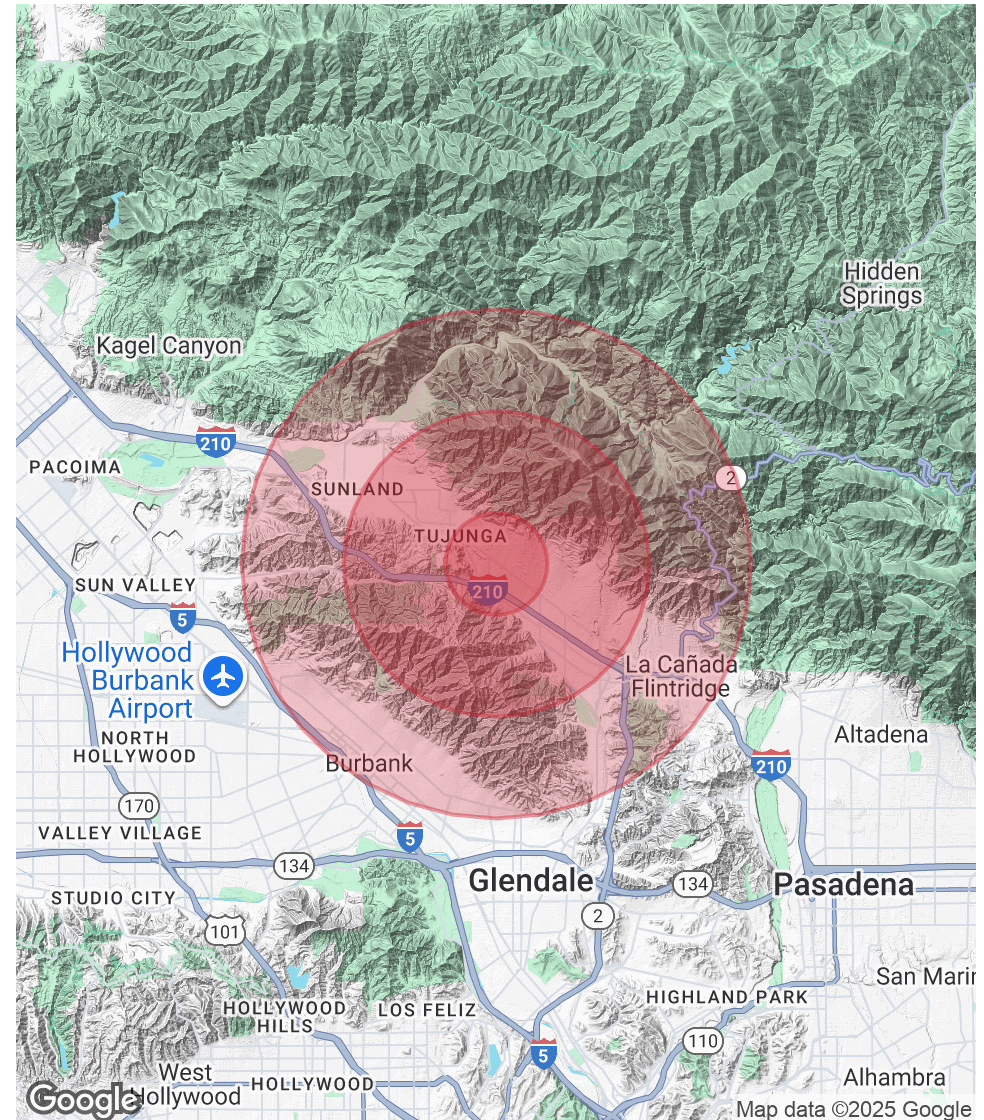
DAVID "RANDY" STEVENSON

PRESIDENT
 O: 818.956.7001 X155 C: 818.634.3281
 RANDYS@STEVENSONREALESTATE.COM
 CALDRE #01228475

1111 NORTH BRAND BOULEVARD
 SUITE 250
 GLENDALE, CA 91202
 STEVENSONREALESTATE.COM
 CALDRE #00983560

GLENDAL, CA 91214

Demographics data derived from AlphaMap



CHIEF OPERATING OFFICER
O: 818.956.7001 X127 C: 626.826.2431
KHONS@STEVENSONREALESTATE.COM
CALDRE #01807261

PRESIDENT
O: 818.956.7001 X155 C: 818.634.3281
RANDYS@STEVENSONREALESTATE.COM
CALDRE #01228475

1111 NORTH BRAND BOULEVARD
SUITE 250
GLENDALE, CA 91202
STEVENSONREALESTATE.COM
CALDRE #00983560