

LARRY MAHAN BUSINESS CENTER

Office/Warehouse

SPACE FOR LEASE

1121-1155 Larry Mahan - El Paso, TX 79925



Call for more information or to schedule your appointment

Francis Properties

Managed by Prime Capital Management

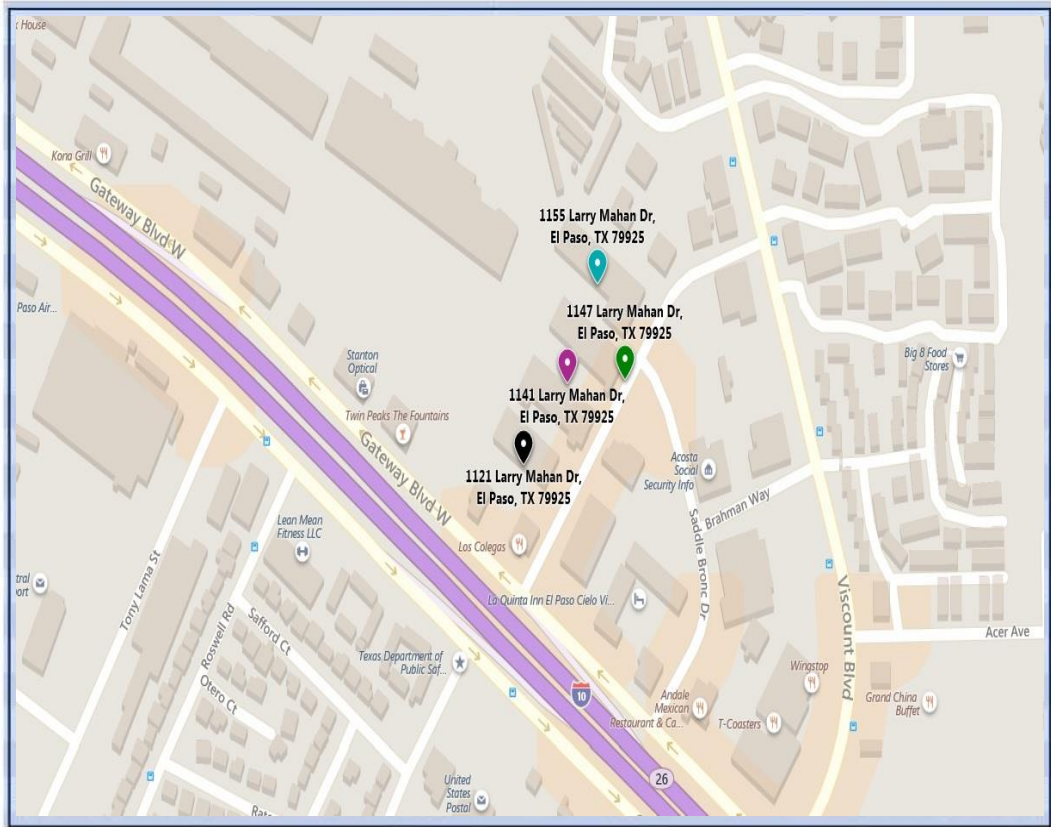
1701 E. Yandell

El Paso, Texas 79902

915-351-8000

www.francisproperties.com





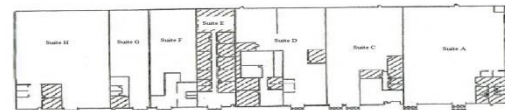
- Located on Larry Mahan and Gateway West Blvd, next to the Fountains at Farah
- Easy access to I-10
- Ample parking
- Grade level or dock high doors
- M-1 Zoning

Space Available:

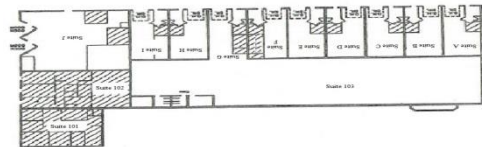
- 1141 Suite D – 1,250 SF
- 1141 Suite E – 1,250 SF
- 1147 Suite D – 4,350 SF
- 1147 Suite E – 2,400 SF
- 1155 Suite C – 2,415 SF
- 1155 Suite J2 – 2,995 SF



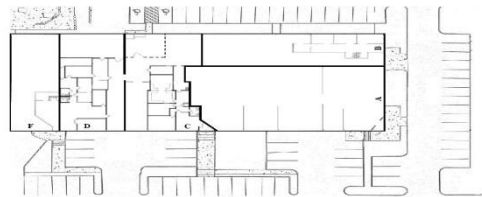
1155 Larry Mahan



1147 Larry Mahan



1141 Larry Mahan



1121 Larry Mahan

