



4500 TUCK ROAD

LOGANVILLE,
GA 30052

Land For Sale - 56.44 +/- Acres

JASON MCCART, SIOR

Senior Vice President

770.601.5451

jmccart@kingindustrial.com

King Industrial
Realty, Inc.

Industrial • Commercial • Investment

404.942.2000 | kingindustrial.com

EXECUTIVE SUMMARY



PROPERTY HIGHLIGHTS

- Flat to Sloping Topo
- Zoning: County Portion - Light Commercial; City Portion - CH
- County portion has been set aside for annexation into the City.
- Detention pond in place is designed to carry an additional 23 acres.
- All Utilities Available
- Power: Onsite 3 Phase Power at Property
- Sewer: City portion already available by way of easement. County portion available upon annexation into City.
- Owner will consider sub-dividing.
- Approved plans for City portion ready to be submitted for permitting.
- Possible Commercial/Industrial/Residential Development

OFFERING SUMMARY

Lot Size: 56.44 Acres

JASON MCCART, SIOR

Senior Vice President

770.601.5451

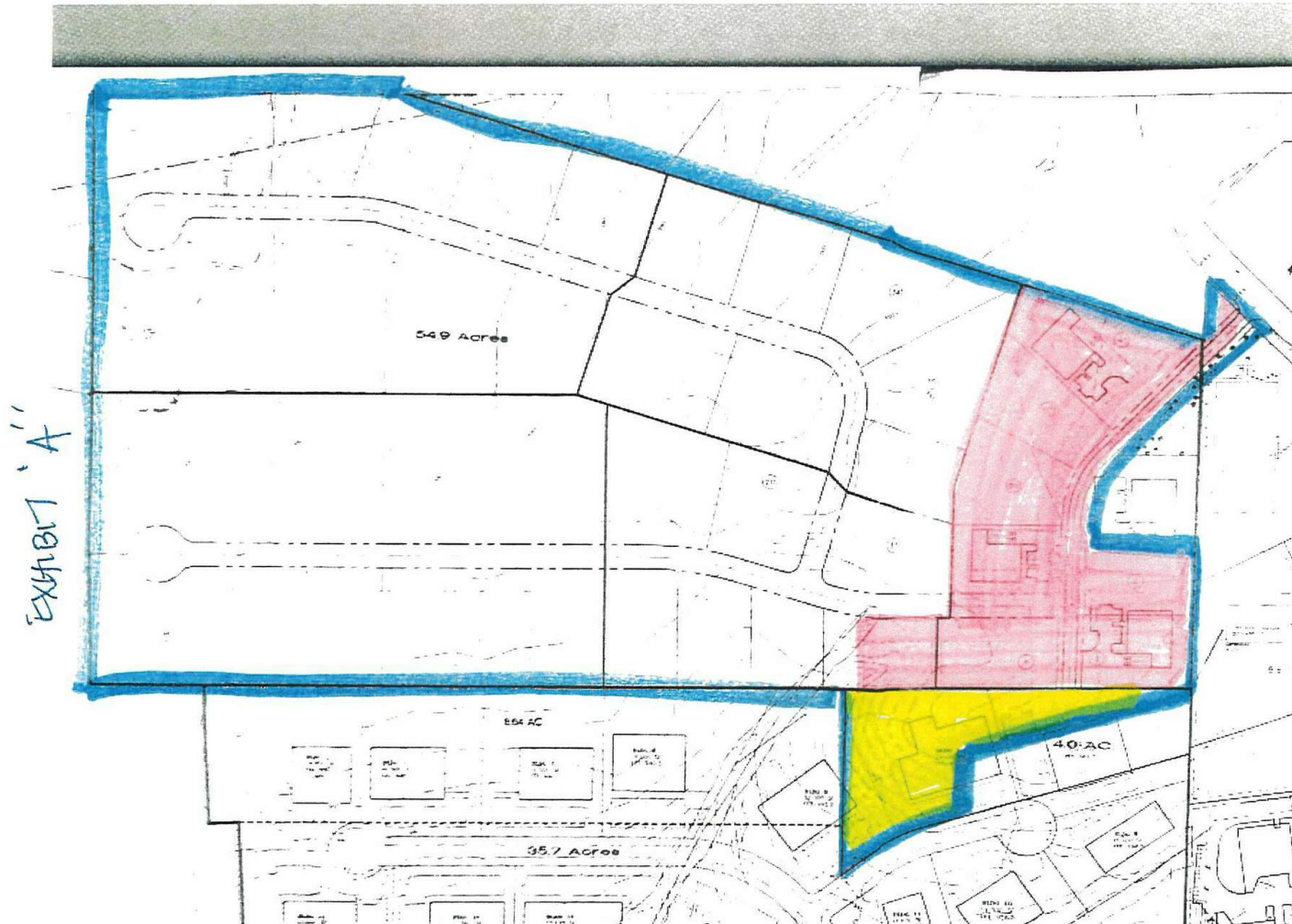
jmccart@kingindustrial.com

Every effort has been made to provide accurate information, but no liability is assumed for errors or omissions.



Industrial • Commercial • Investment
404.942.2000 | kingindustrial.com

SURVEY



JASON MCCART, SIOR

Senior Vice President

770.601.5451

jmccart@kingindustrial.com

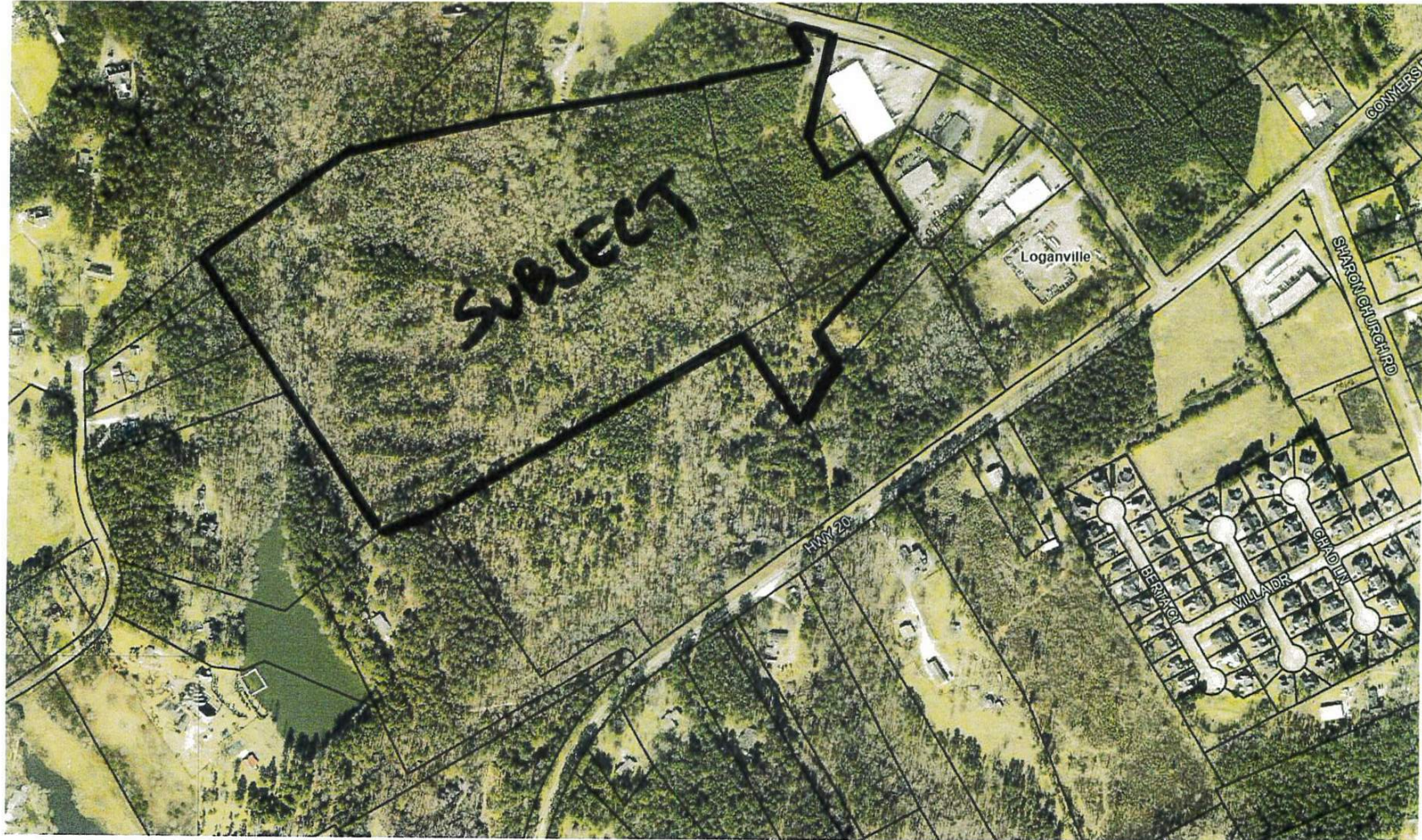
Every effort has been made to provide accurate information, but no liability is assumed for errors or omissions.

King Industrial
Realty, Inc.

CORFAC
INTERNATIONAL

Industrial • Commercial • Investment
404.942.2000 | kingindustrial.com

ADDITIONAL PHOTOS



JASON MCCART, SIOR

Senior Vice President

770.601.5451

jmccart@kingindustrial.com

Every effort has been made to provide accurate information, but no liability is assumed for errors or omissions.

King Industrial
Realty, Inc.

CORFAC
INTERNATIONAL

Industrial • Commercial • Investment
404.942.2000 | kingindustrial.com

RETAILER MAP



Subject Property ▶

Imagery ©2023 , Airbus, CNES / Airbus, Landsat / Copernicus, Maxar Technologies, U.S. Geological Survey, USDA/FPAC/GEO

JASON MCCART, SIOR

Senior Vice President

770.601.5451

jmccart@kingindustrial.com

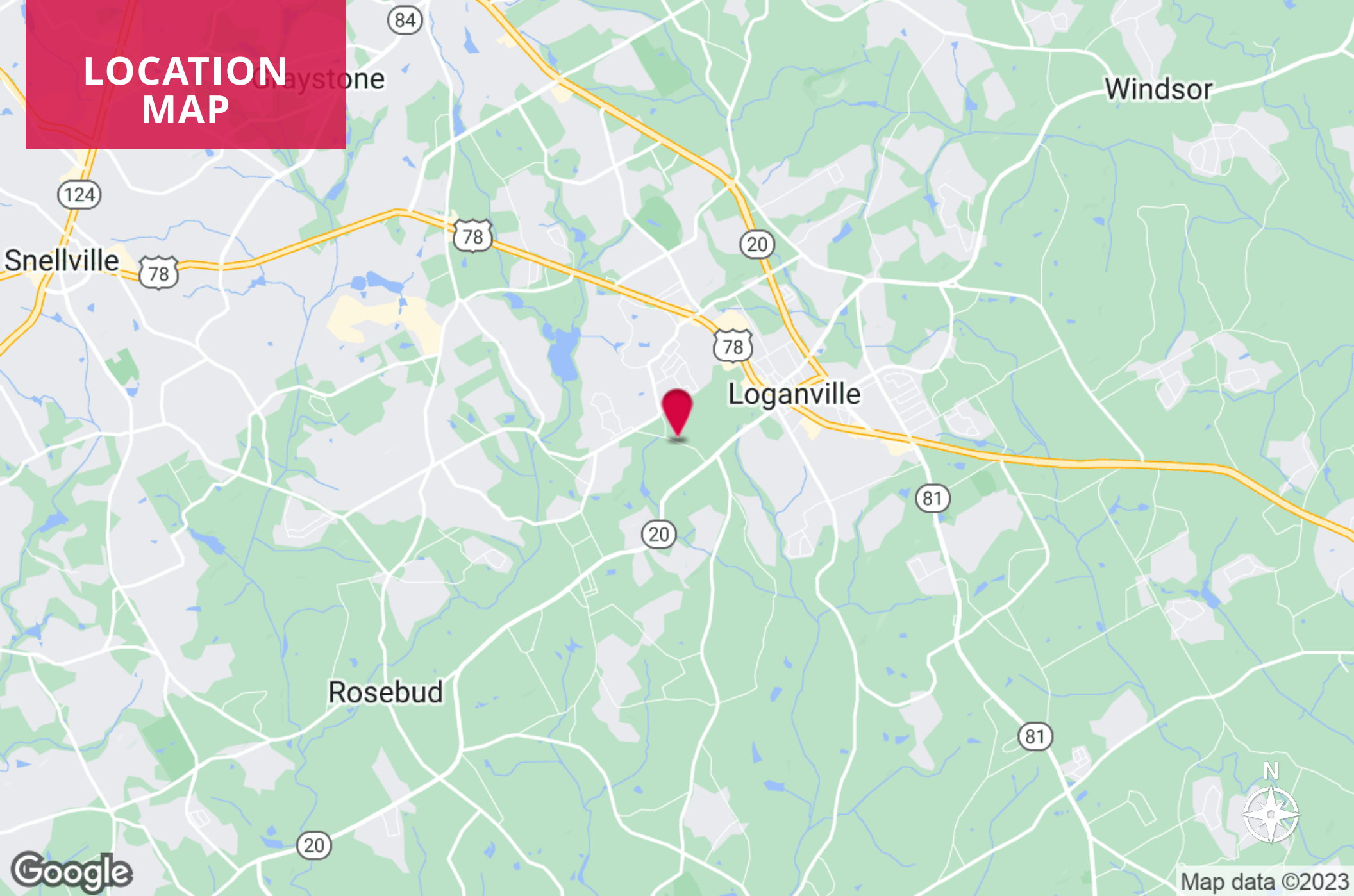
Every effort has been made to provide accurate information, but no liability is assumed for errors or omissions.

King Industrial
Realty, Inc.

CORFAC
INTERNATIONAL

Industrial • Commercial • Investment
404.942.2000 | kingindustrial.com

LOCATION MAP



JASON MCCART, SIOR

Senior Vice President

770.601.5451

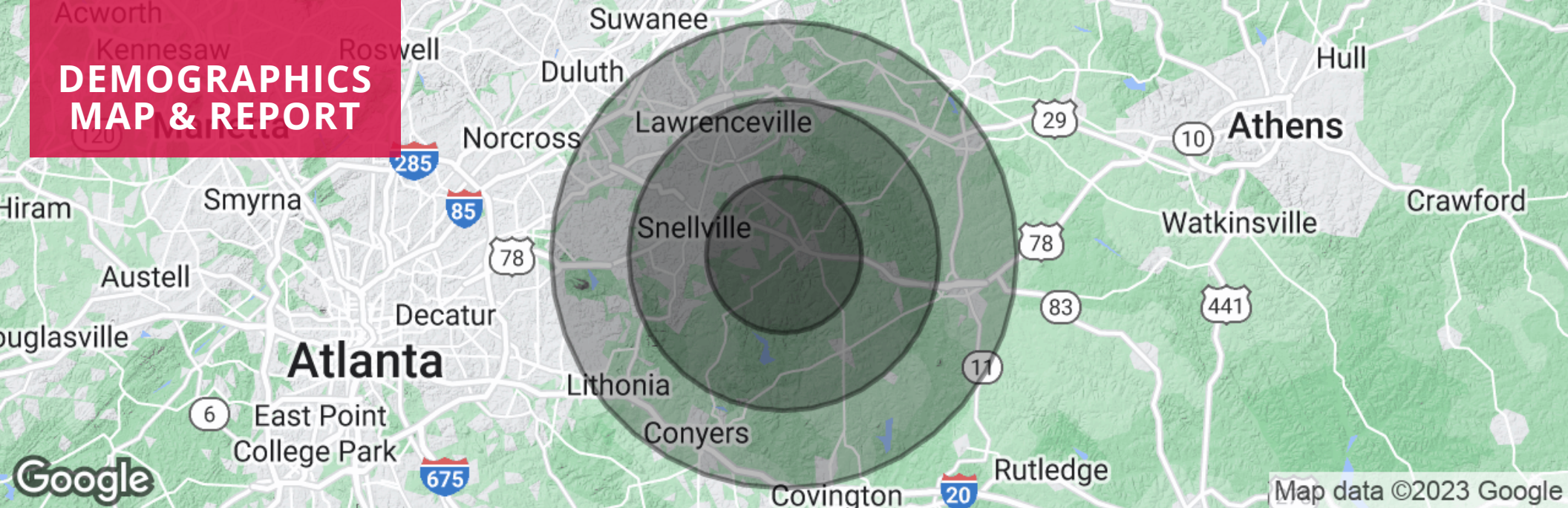
jmccart@kingindustrial.com

Every effort has been made to provide accurate information, but no liability is assumed for errors or omissions.



Industrial • Commercial • Investment
404.942.2000 | kingindustrial.com

DEMOGRAPHICS MAP & REPORT



POPULATION

	5 MILES	10 MILES	15 MILES
Total Population	82,384	334,307	822,438
Average Age	36.1	37.2	36.5
Average Age (Male)	35.5	35.6	35.0
Average Age (Female)	37.8	38.4	37.7

HOUSEHOLDS & INCOME

	5 MILES	10 MILES	15 MILES
Total Households	27,329	110,745	279,478
# of Persons per HH	3.0	3.0	2.9
Average HH Income	\$86,971	\$92,802	\$82,731
Average House Value	\$238,796	\$236,586	\$203,015

JASON MCCART, SIOR

Senior Vice President

770.601.5451

jmccart@kingindustrial.com

Every effort has been made to provide accurate information, but no liability is assumed for errors or omissions.

King Industrial
Realty, Inc.

CORFAC
INTERNATIONAL

Industrial • Commercial • Investment
404.942.2000 | kingindustrial.com

TUCK ROAD

GA 20

EXCLUSIVELY LISTED BY:

JASON MCCART, SIOR

Senior Vice President

jmccart@kingindustrial.com

770.601.5451

King Industrial
Realty, Inc.

Industrial • Commercial • Investment
404.942.2000 | kingindustrial.com