



## BUILDING INFORMATION

- Type: Office Condo
- RBA: 47,234 SF
- Stories: 3
- Class: B
- Renovated: 2020
- Construction: Masonry
- Parking: Surface - 210 (4.45/1,000 SF)
- Walk Score®: Car-Dependent (42)  
Transit Score®: Some Transit (39)

## NEW RENOVATION

- Roof
- Parking Lot
- Updated Restrooms
- Elevators
- Entry Door
- Directory
- Sprinkler Systems
- Individual HVAC Units

**KENNETH FELLOWS**

kfellows@klnb.com | 301-222-0210

**ROBERT PUGH**

rpugh@klnb.com | 301-222-0211

**KEIRY MARTINEZ**

kmartinez@klnb.com | 703-334-5629

# AERIAL

## 4 TAFT COURT

ROCKVILLE, MARYLAND 20850



**KENNETH FELLOWS**

kfellows@klnb.com | 301-222-0210

**ROBERT PUGH**

rpugh@klnb.com | 301-222-0211

**KEIRY MARTINEZ**

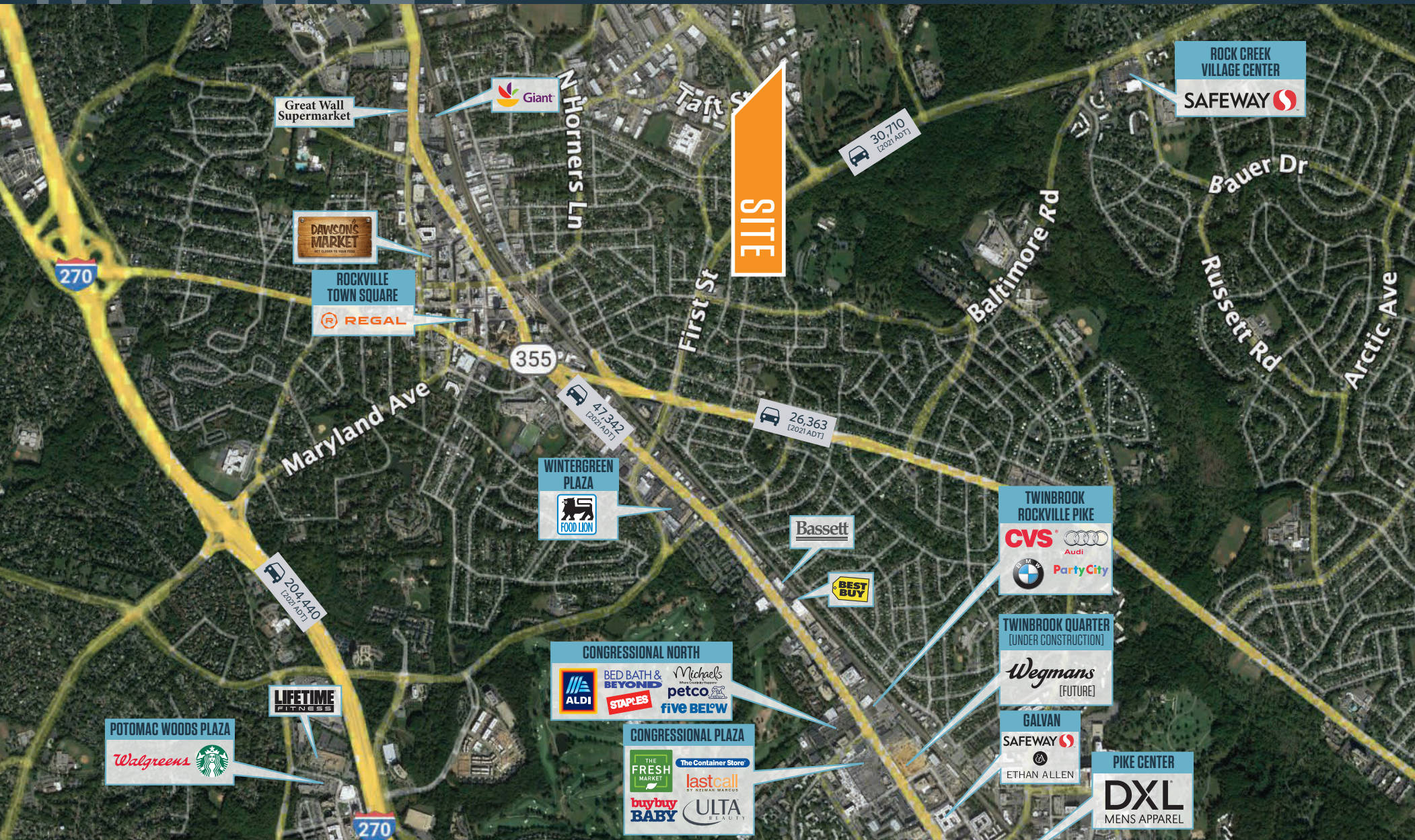
kmartinez@klnb.com | 703-334-5629

**klnb**

# MARKET

# 4 TAFT COURT

ROCKVILLE, MARYLAND 20850



**KENNETH FELLOWS**

kfellows@klnb.com | 301-222-0210

**ROBERT PUGH**

rpugh@klnb.com | 301-222-0211

**KEIRY MARTINEZ**

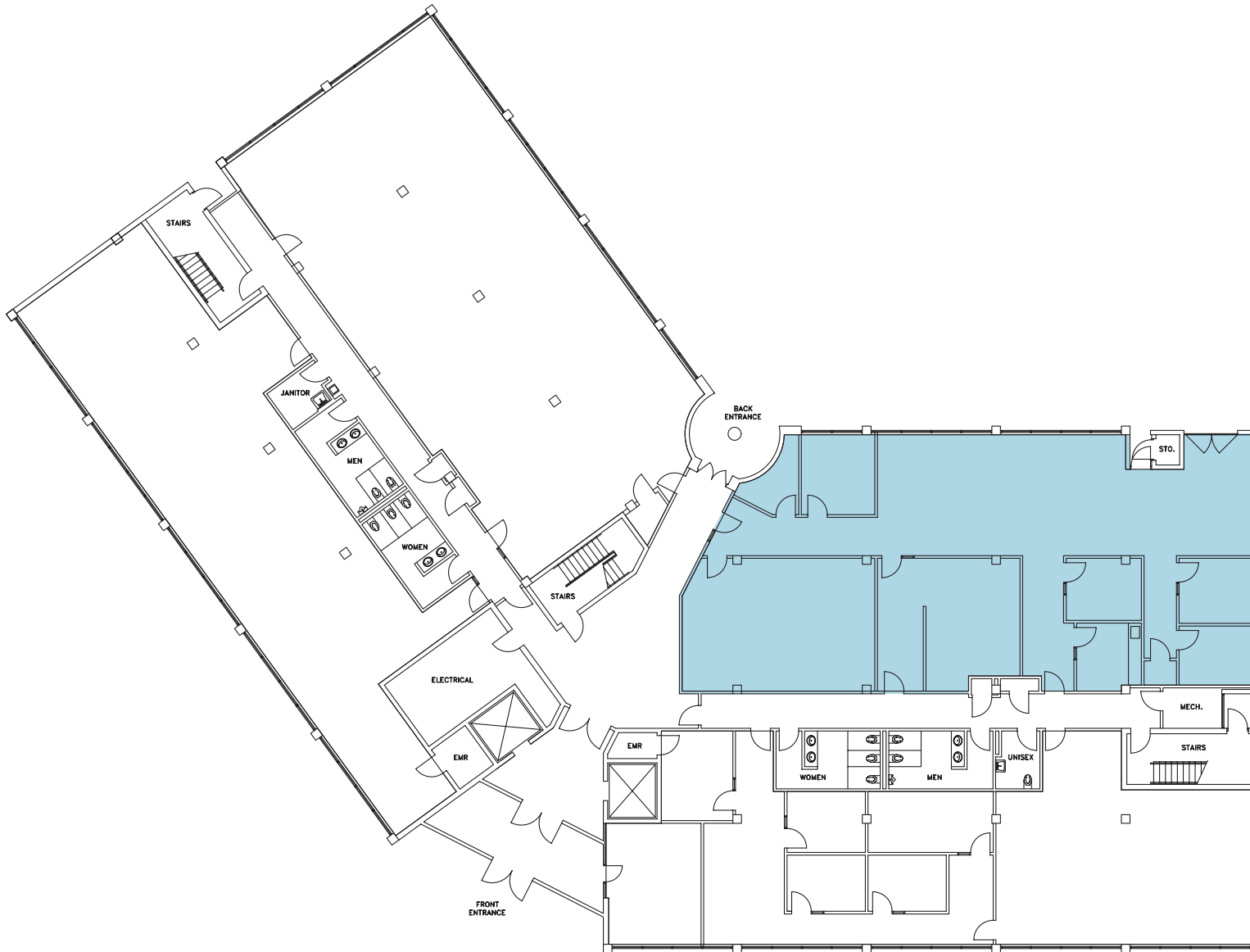
kmartinez@klnb.com | 703-334-5629



# FLOOR PLAN

## 4 TAFT COURT

ROCKVILLE, MARYLAND 20850



## 1ST FLOOR

 SUITE 125

4,167 SF

**KENNETH FELLOWS**

kfellows@klnb.com | 301-222-0210

**ROBERT PUGH**

rpugh@klnb.com | 301-222-0211

**KEIRY MARTINEZ**

kmartinez@klnb.com | 703-334-5629





### 2ND FLOOR

 SUITE 200

10,384 SF

 SUITE 250

3,587 SF

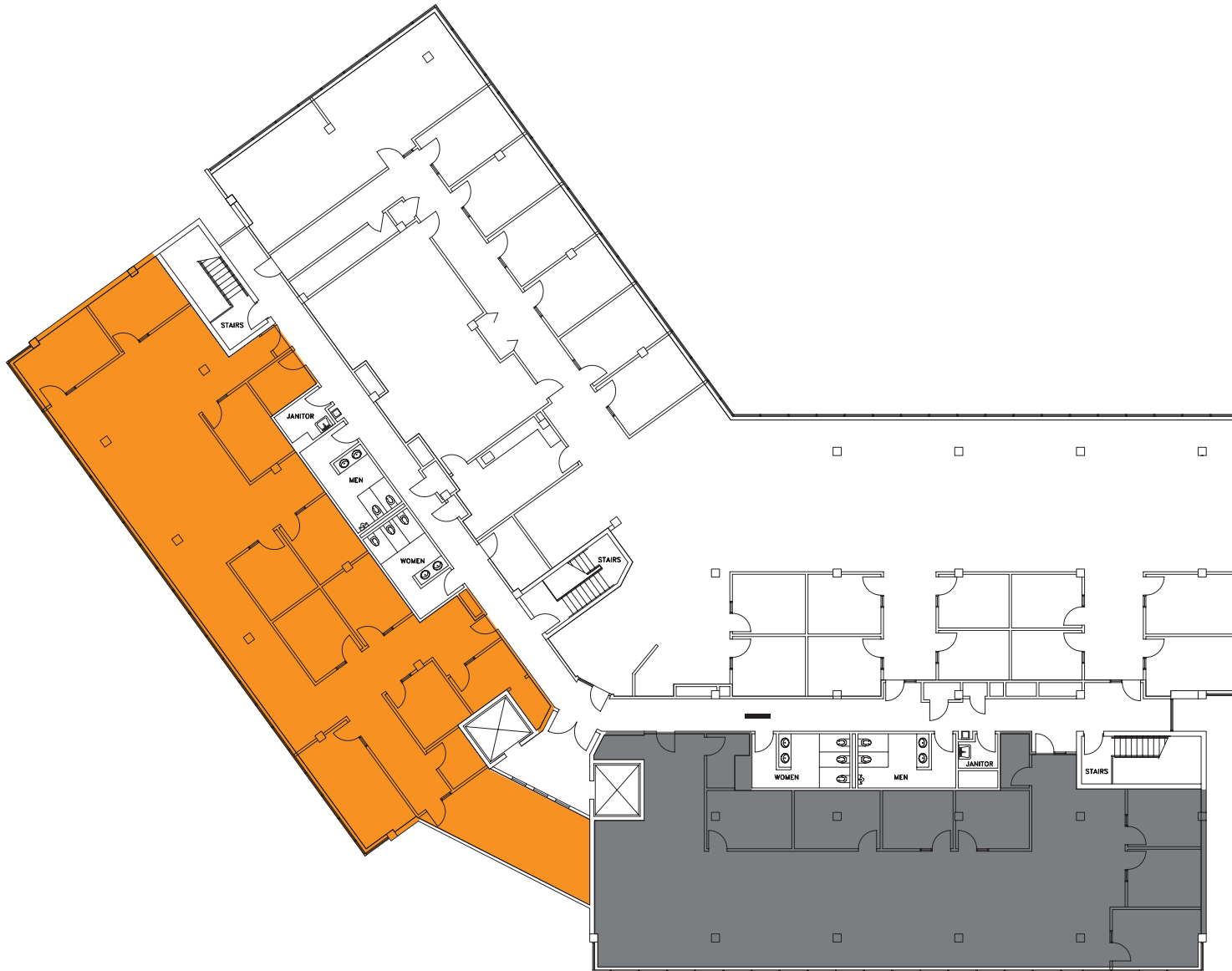
 SUITE 275

3,583 SF

# FLOOR PLAN

## 4 TAFT COURT

ROCKVILLE, MARYLAND 20850



### 3RD FLOOR

 SUITE 350

4,600 SF

 SUITE 375

4,140 SF

**KENNETH FELLOWS**

kfellows@klnb.com | 301-222-0210

**ROBERT PUGH**

rpugh@klnb.com | 301-222-0211

**KEIRY MARTINEZ**

kmartinez@klnb.com | 703-334-5629

**klnb**

# PHOTOS

## 4 TAFT COURT

ROCKVILLE, MARYLAND 20850



**KENNETH FELLOWS**

kfellows@klnb.com | 301-222-0210

**ROBERT PUGH**

rpugh@klnb.com | 301-222-0211

**KEIRY MARTINEZ**

kmartinez@klnb.com | 703-334-5629

**klnb**



# 4 TAFT COURT

ROCKVILLE, MARYLAND 20850

## FOR MORE INFORMATION, PLEASE CONTACT:

### KENNETH FELLOWS

kfellows@klnb.com  
301-222-0210

### ROBERT PUGH

rpugh@klnb.com  
301-222-0211

### KEIRY MARTINEZ

kmartinez@klnb.com  
703-334-5629

2273 Research Boulevard, Suite 150, Rockville, MD 20850

.....

## klnb.com

 [facebook.com/KLNBCRE](https://facebook.com/KLNBCRE)

 [@KLNBCRE](https://twitter.com/KLNBCRE)

 [linkedin.com/company/klnb](https://linkedin.com/company/klnb)

 [instagram.com/klnbcre](https://instagram.com/klnbcre)

**CLICK TO VIEW PROPERTY WEBSITE**

While we have no reason to doubt the accuracy of any of the information supplied, we cannot, and do not, guarantee its accuracy. All information should be independently verified prior to a purchase or lease of the property. We are not responsible for errors, omissions, misuse, or misinterpretation of information contained herein and make no warranty of any kind, express or implied, with respect to the property or any other matters.