

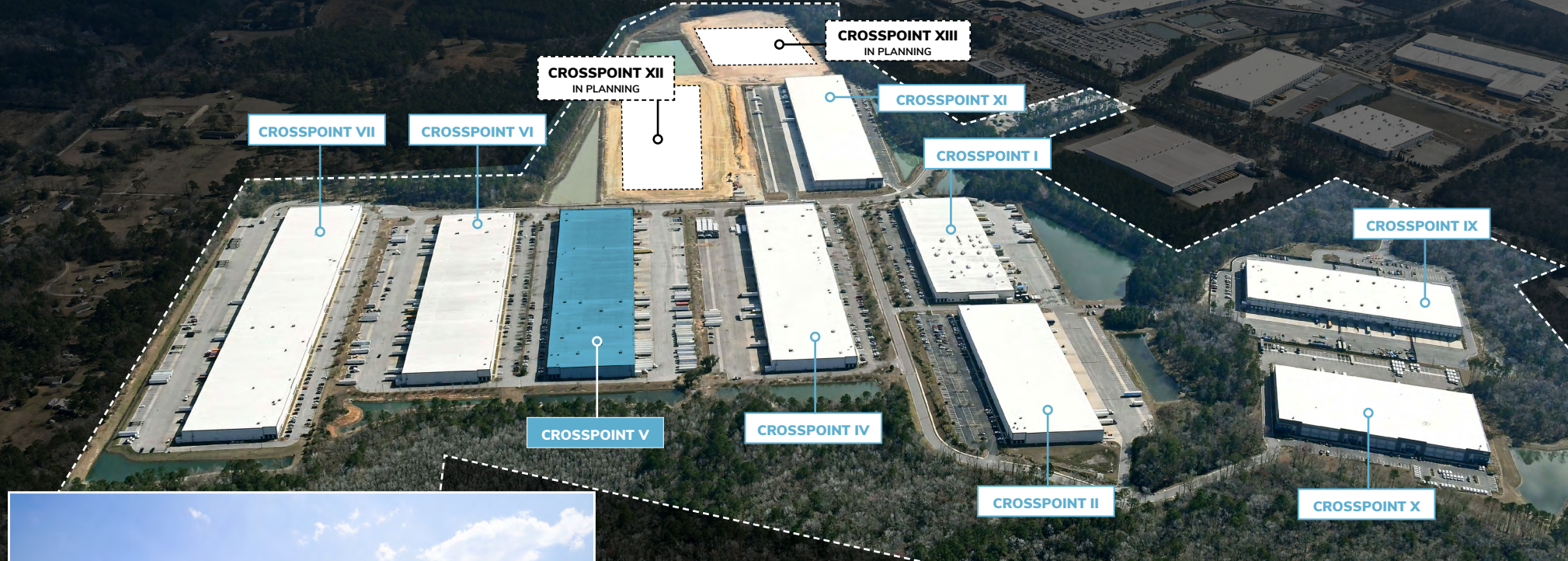
INDUSTRIAL SPACE FOR LEASE

CROSSPOINT
AT PALMETTO COMMERCE PARK

Crosspoint V

39,000 SF Class "A" Industrial Space
for Lease in North Charleston

4269 CROSSPOINT DRIVE | LADSON, SOUTH CAROLINA



FOR MORE INFORMATION:

Michael G. White, SIOR, CCIM

BROKER-IN-CHARGE

mike.white@charlestonindustrial.com

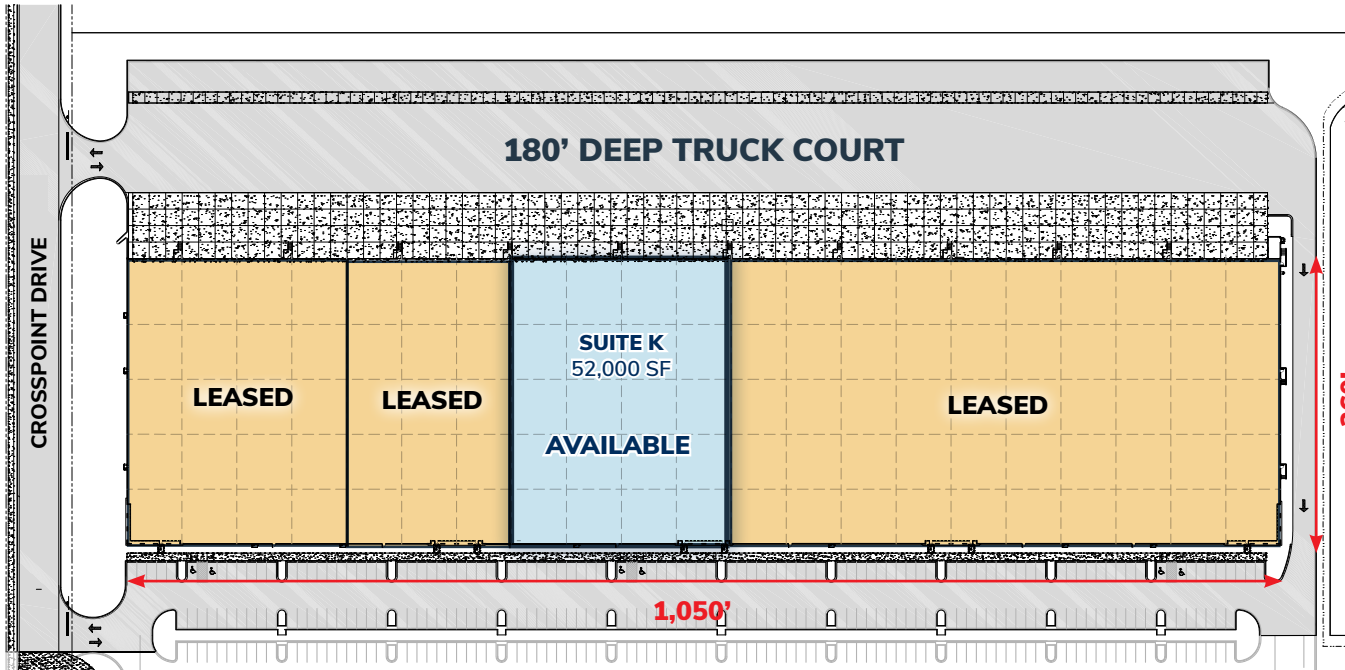
Mobile / (843) 819-1234

CK Childress
Klein

CHARLESTON INDUSTRIAL

www.crosspointcharleston.com

CROSSPOINT V FLOOR PLAN
4269 CROSSPOINT DRIVE



SUITE K SPECIFICATIONS

- 52,000 SF Total (4 Bays)
- 1,525 SF Office
- Twelve (12) 9' x 10' Dock Doors, 4 with Pit Levelers
- 16 Trailer Parking Spaces
- 37 Auto Parking Spaces
- Dimensions: 150' wide x 260' deep
- 2 HVLS Fans

BUILDING SPECIFICATIONS

- 273,000 SF Total Building Size
- 30' Clear Height
- Rear-Loading Facility
- 50' x 50' Bays with 60'-Deep Loading Bay
- 277/480-Volt, 3-Phase Electrical
- ESFR Fire Sprinkler System
- Concrete Tilt-Wall Construction



FOR MORE INFORMATION:

Michael G. White, SIOR, CCIM

BROKER-IN-CHARGE

mike.white@charlestonindustrial.com

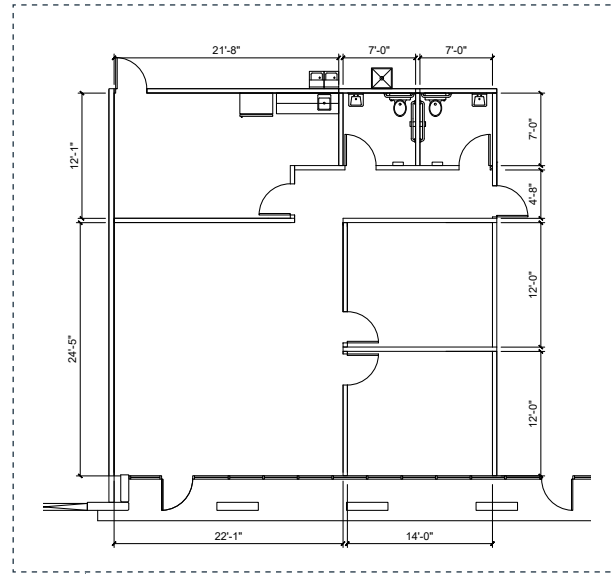
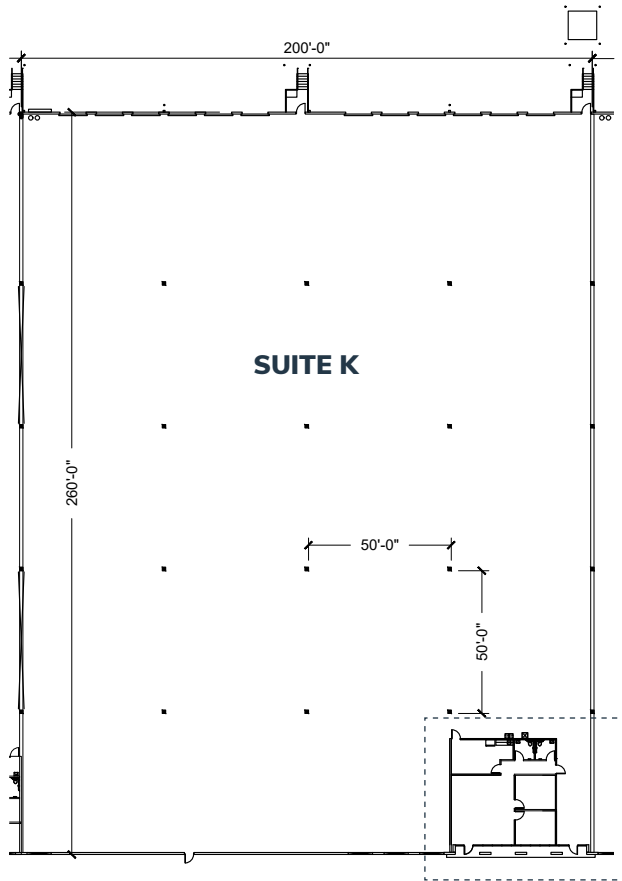
Mobile / (843) 819-1234



CHARLESTON INDUSTRIAL

www.crosspointcharleston.com

CROSSPOINT V (SUITE K)
4269 CROSSPOINT DRIVE



OFFICE ENLARGED

SUITE K SPECIFICATIONS

- 52,000 SF Total (4 Bays)
- 1,525 SF Office
- Twelve (12) 9' x 10' Dock Doors, 4 with Pit Levelers
- 16 Trailer Parking Spaces
- 37 Auto Parking Spaces
- Dimensions: 150' wide x 260' deep
- 2 HVLS Fans

BUILDING SPECIFICATIONS

- 273,000 SF Total Building Size
- 30' Clear Height
- Rear-Loading Facility
- 50' x 50' Bays with 60'-Deep Loading Bay
- 277/480-Volt, 3-Phase Electrical
- ESFR Fire Sprinkler System
- Concrete Tilt-Wall Construction



FOR MORE INFORMATION:

Michael G. White, SIOR, CCIM

BROKER-IN-CHARGE

mike.white@charlestonindustrial.com

Mobile / (843) 819-1234



CHARLESTON INDUSTRIAL

www.crosspointcharleston.com

SUMMERVILLE

AERIAL SITE PLAN

4269 CROSSPOINT DRIVE



**BOEING
IRC & 737
PROPULSION**

**MERCEDES-
BENZ VANS
MANUFACTURING**

**PALMETTO COMMERCE I-26
INTERCHANGE PROJECT
2026 COMPLETION DATE**

CROSSPOINT

AT PALMETTO COMMERCE PARK

LADSON ROAD

ASHLEY PHOSPHATE RD

NORTH
CHARLESTON

PALMETTO COMMERCE PKWY

DORCHESTER ROAD

10 MILES TO:
CHARLESTON
INTERNATIONAL
AIRPORT

**BOEING
787 FINAL
ASSEMBLY
CAMPUS**

DRIVING DISTANCES

- 0.6 MILES TO BOEING 787 INTERIORS CENTER
- 0.6 MILES TO BOEING 737 PROPULSION
- 0.5 MILES TO MERCEDES-BENZ VANS CAMPUS
- 10 MILES TO BOEING 787 DREAMLINER FINAL ASSEMBLY CAMPUS
- 21 MILES TO WANDO WELCH TERMINAL PORT OF CHARLESTON
- 22 MILES TO VOLVO CARS MANUFACTURING CAMPUS
- 41 MILES TO I-95 AND I-26 INTERCHANGE

FOR MORE INFORMATION:

Michael G. White, SIOR, CCIM

BROKER-IN-CHARGE

mike.white@charlestonindustrial.com

Mobile / (843) 819-1234

CK Childress
Klein

CHARLESTON INDUSTRIAL

www.crosspointcharleston.com