

# +8,927 SF INDUSTRIAL BUILDING FOR LEASE

561 W. Rincon Street | Corona, CA 92880



LAWRENCE C. NULL, SIOR  
Senior Vice President  
951.276.3616  
lnull@lee-associates.com  
DRE #00822133

JUSTIN NULL  
Vice President  
951.276.3634  
jnull@lee-associates.com  
DRE #01899025

GARRET GILLILAND  
Associates  
951.276.3648  
ggilliland@lee-associates.com  
DRE #02075196

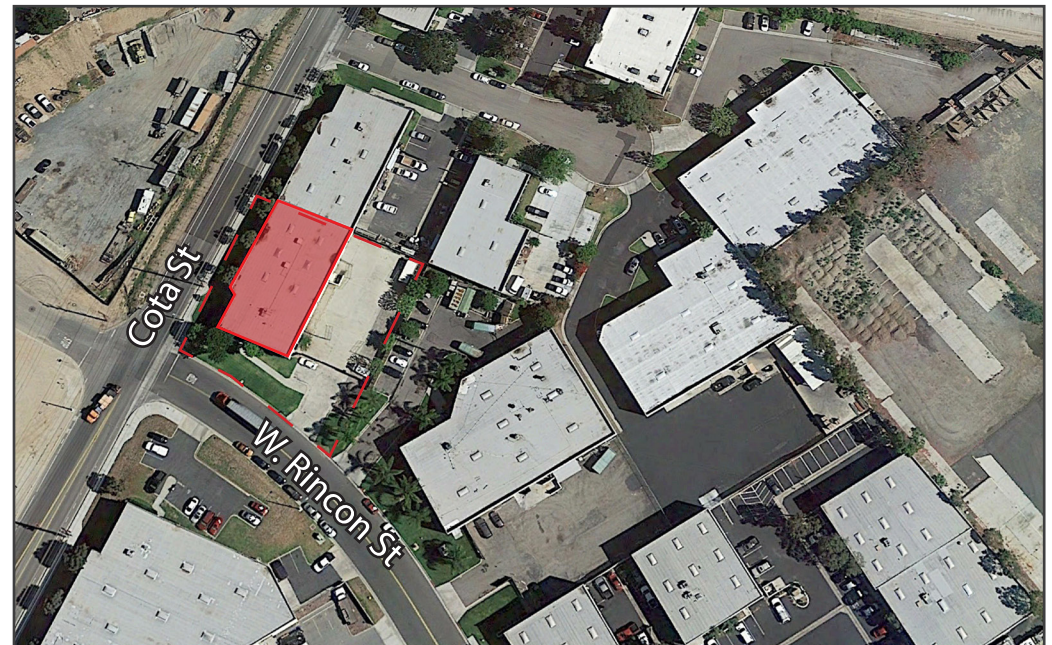
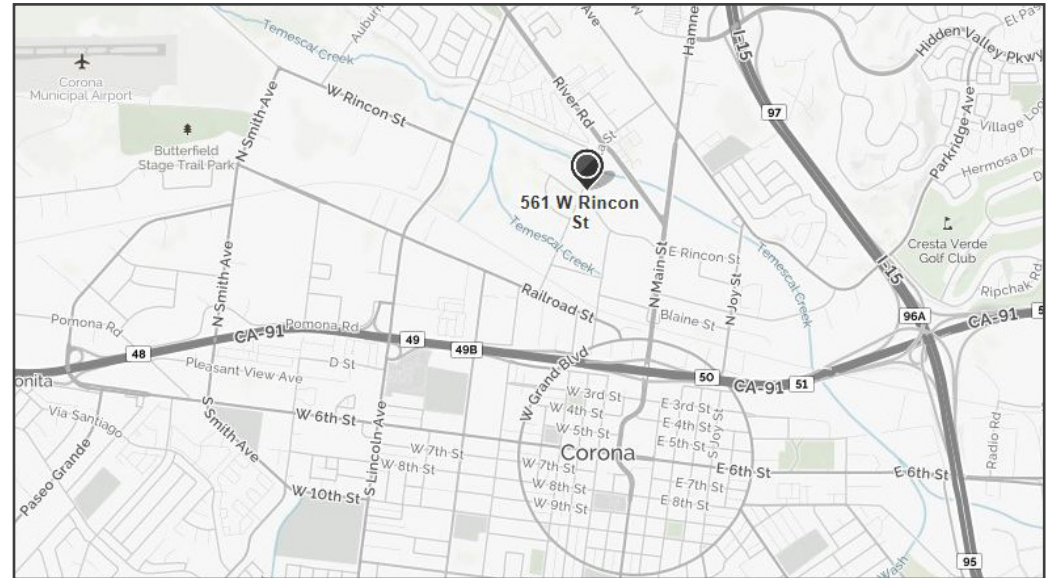
ROGER EGGE  
Private Capital Realty Advisors, Inc.  
949.458.7378  
rdegge@privatecapitalra.com  
DRE #00923848

# ±8,927 SF INDUSTRIAL BUILDING FOR LEASE

561 W. Rincon Street | Corona, CA 92880

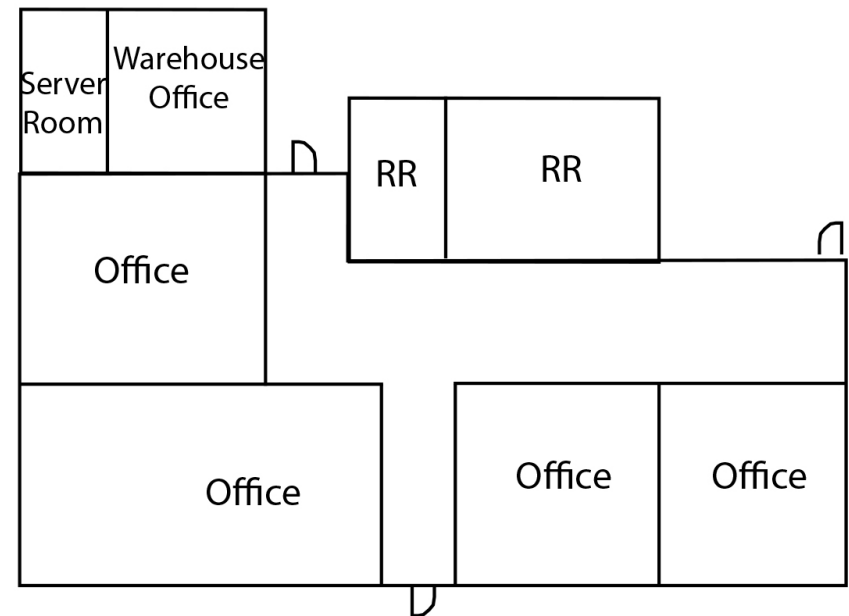
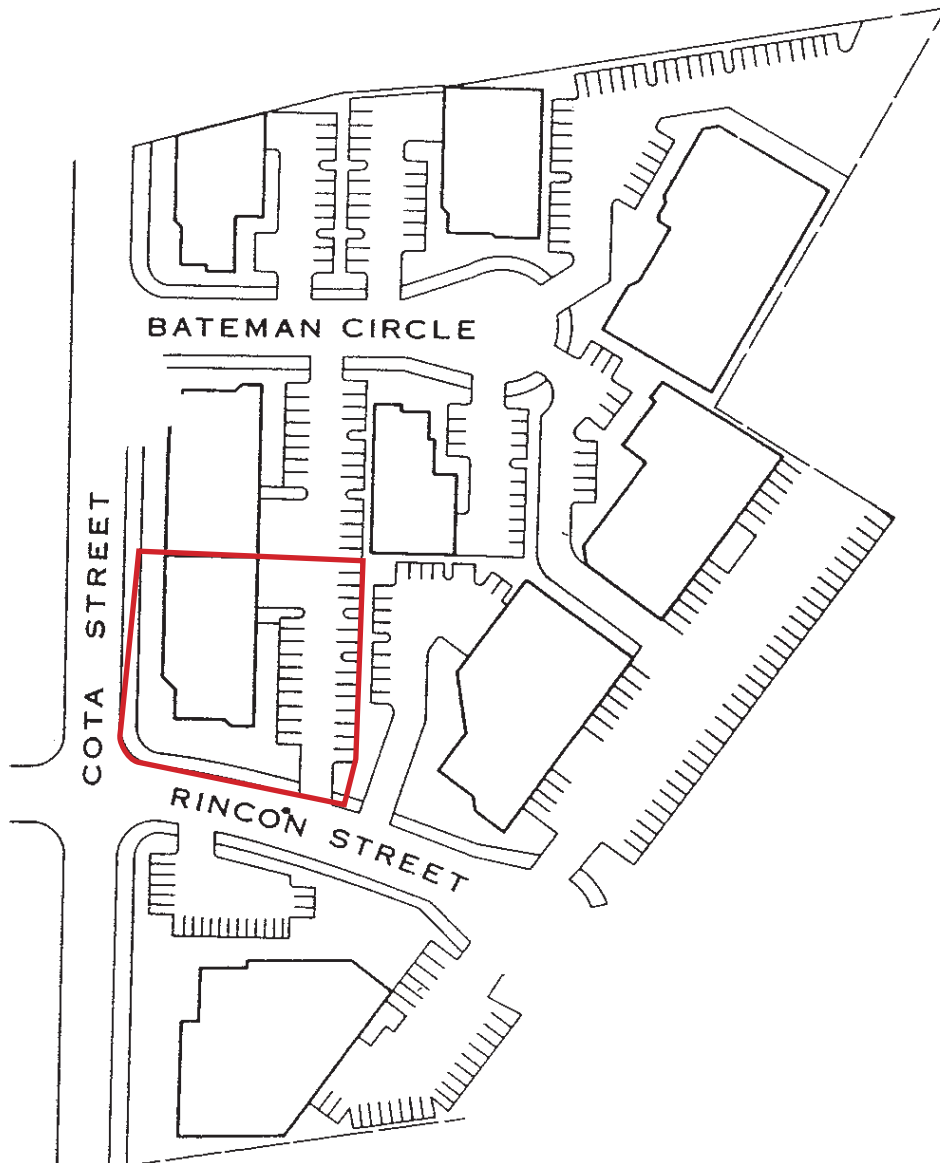
## BUILDING FEATURES

AVAILABLE SF:	±8,927 SF Industrial Building
OFFICE SF:	±1,200 SF
PROPERTY TYPE :	Freestanding Industrial Building
ZONING:	M1
GL DOORS:	1 (12'x14')
CEILING HEIGHT:	14'
PARKING:	18 Parking Spaces
POWER:	200Amps; 120/208V (Verify)
WAREHOUSE:	Large Shop Restrooms, Distributed Power & Air Lines
MEZZANINE:	Bonus Mezzanine & Storage
YARD:	Large, Secured, Gated Yard
LIGHTING:	Extensive Strip Fluorescent Warehouse Lighting



# +8,927 SF INDUSTRIAL BUILDING FOR LEASE

561 W. Rincon Street | Corona, CA 92880



# +8,927 SF INDUSTRIAL BUILDING FOR LEASE

561 W. Rincon Street | Corona, CA 92880



**LEE & ASSOCIATES, INC. - RIVERSIDE | 4193 FLAT ROCK DRIVE, SUITE 100 | RIVERSIDE, CA 92505**

No warranty or representation has been made as to the accuracy of the foregoing information. Terms of sale or lease and availability are subject to change or withdrawal without notice. Corporate DRE #01048055

Broker Contacts: Lawrence C. Null, SIOR, DRE #00822133 | Justin Null, DRE #01899025 | Garret Gilliland, DRE #02075196 | Roger Egge, DRE #00923848