

3050 BISCAYNE BLVD

FULLY BUILT-OUT OFFICE SPACES



EDGEWATER
Miami, Florida

FOR LEASE



Lyle Chariff
President/Broker
(305) 576-7474
lyle@chariff.com

info@chariff.com

Mauricio Zapata
Principal/Broker
(305) 576-7474
mauricio@chariff.com

305-576-7474

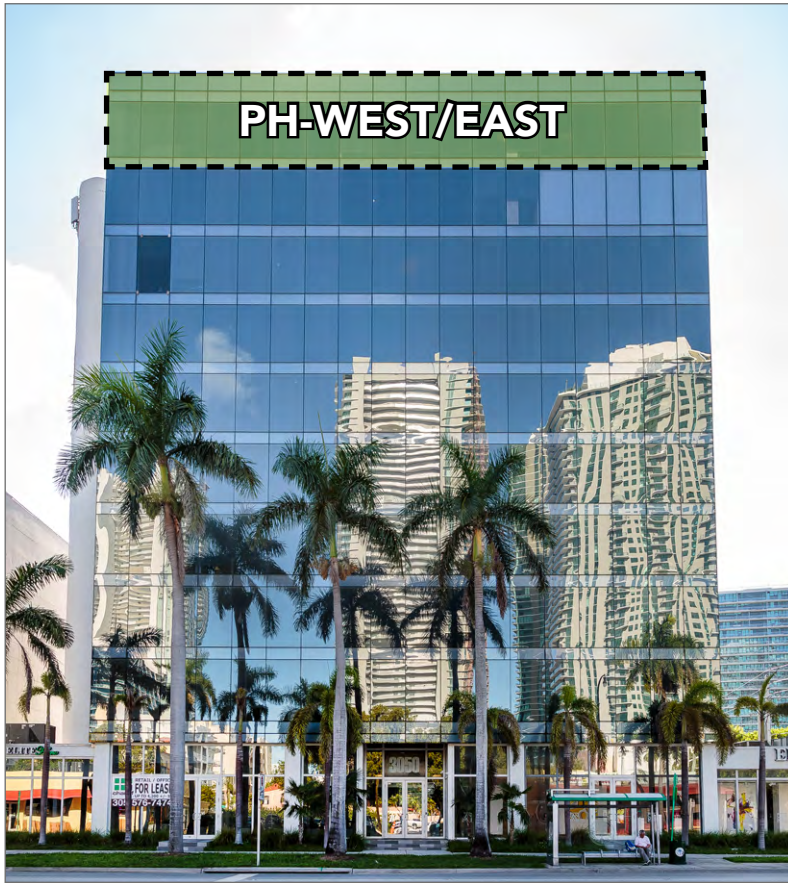
Jenna Cohen
Realtor Associate
(786) 262-8279
jenna@chariff.com

@chariff @chariffrealty

www.chariff.com

All information has been secured from the seller/lessor and the accuracy thereof is not warranted and therefore must be verified by the buyer/lessee prior to purchase/lease. All information is subject to errors, omissions, change, and withdrawal without notice. Any reference to age, market data, and/or square footage must be verified and is not guaranteed. Buyer/lessee bears all risks.

MODERN BUILDING IN EDGEWATER



Offering several turn-key offices with great views fronting Biscayne Boulevard. Perfect for businesses that wish to be in the heart of the Edgewater market and it's surrounding demographics. One of the few buildings in the Biscayne Corridor that offers ground floor parking and access for staff and customers alike.

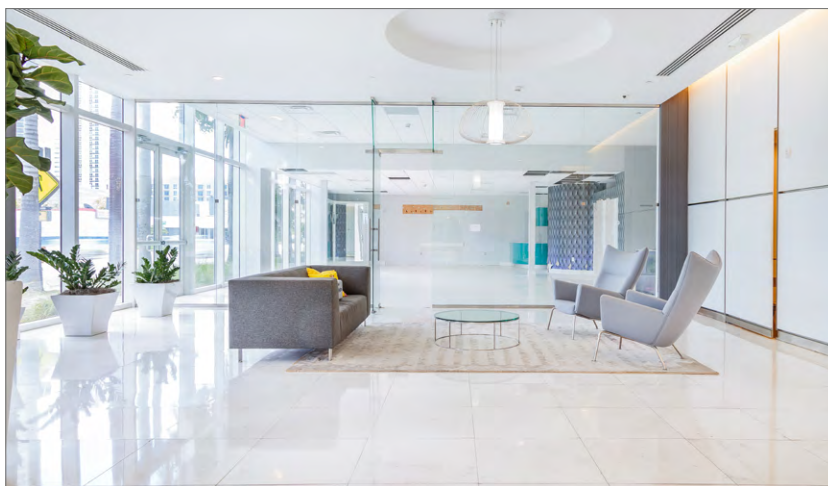
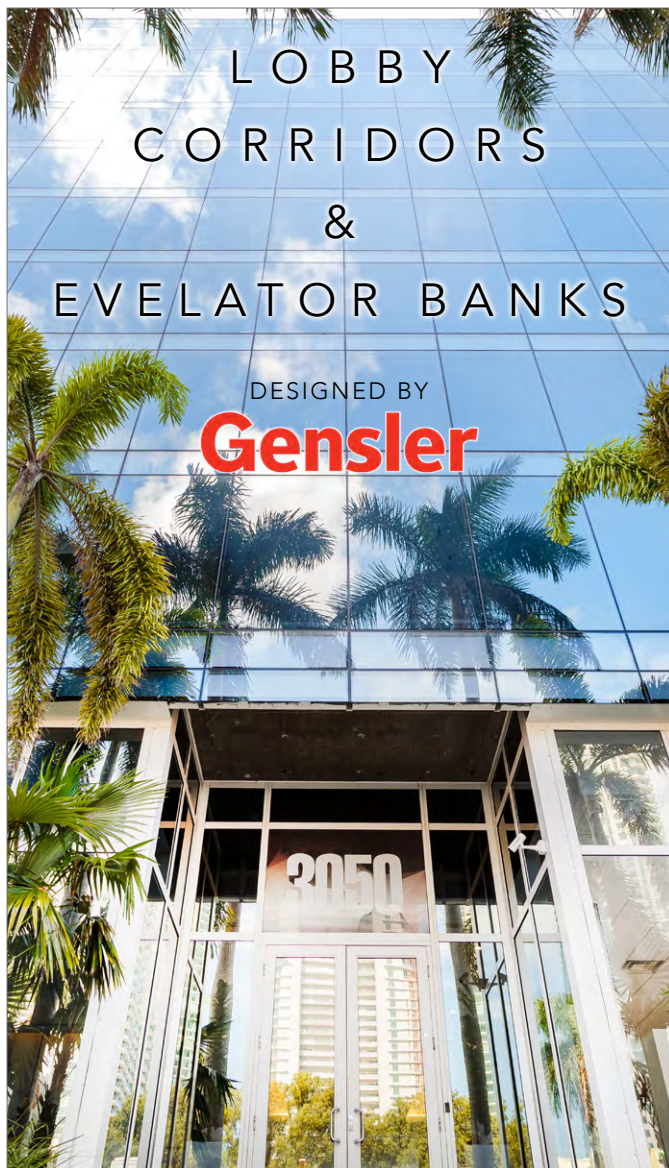
Offices are poised for immediate occupancy, offering expansive views and already built out spaces. Most businesses headquartered at 3050 Biscayne are small to mid-sized enterprises with uses varying from law practices, technology, design to specialized consulting and more.

Office spaces are fully air conditioned, with great natural light and tall windows.

AVAILABLE SPACES

	PH-WEST 3,335 SF +/-	LEASING RATE \$45/ MG
	PH-EAST 4,415 SF +/-	LEASING RATE \$46/ MG





Lyle Chariff
President/Broker
(305) 576-7474
lyle@chariff.com

info@chariff.com

Mauricio Zapata
Principal/Broker
(305) 576-7474
mauricio@chariff.com

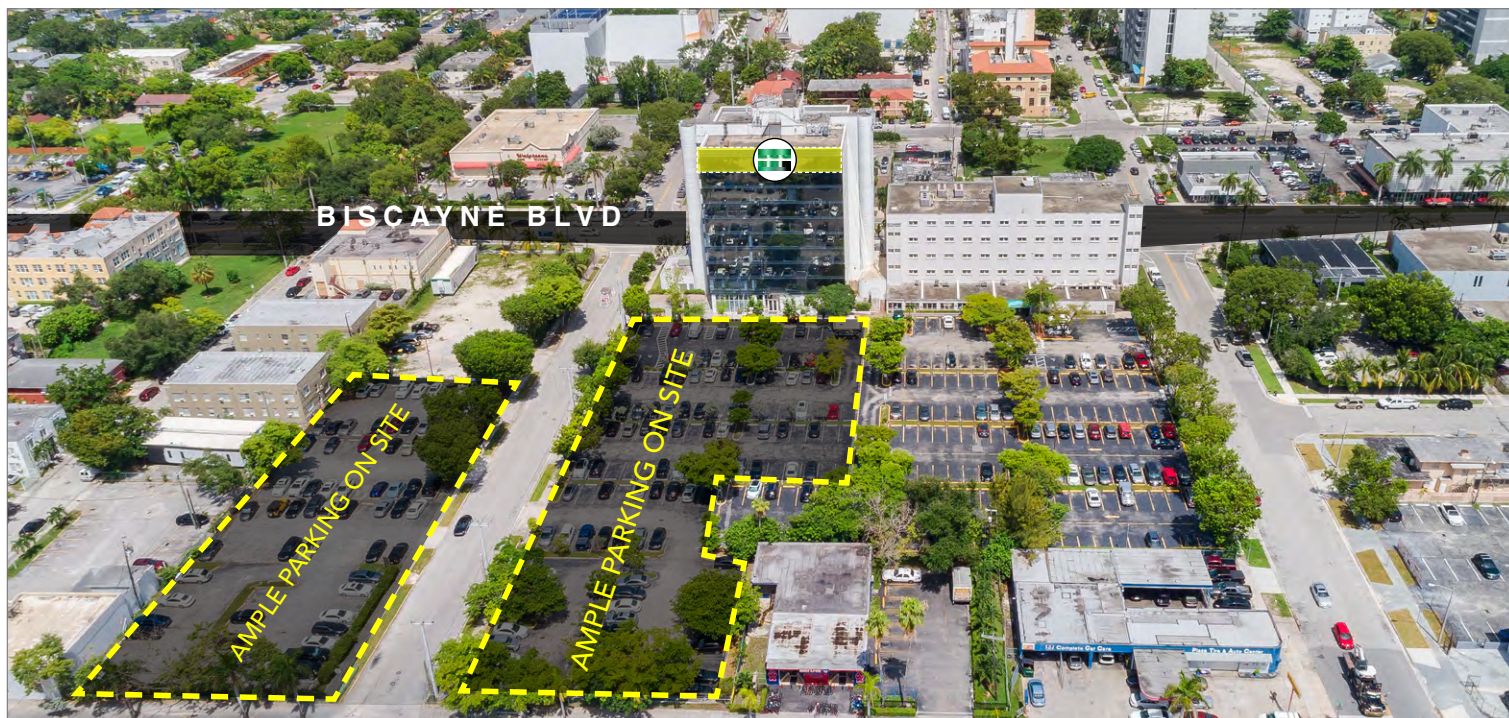
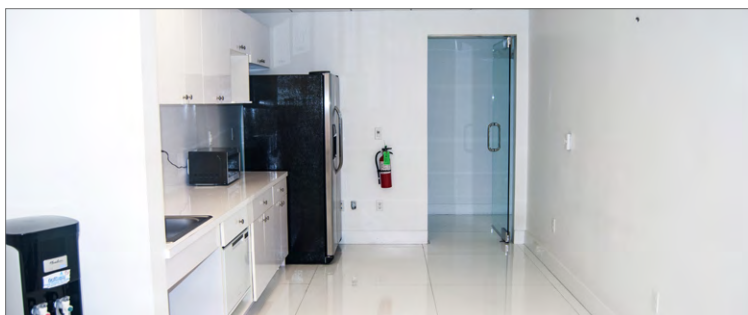
305-576-7474

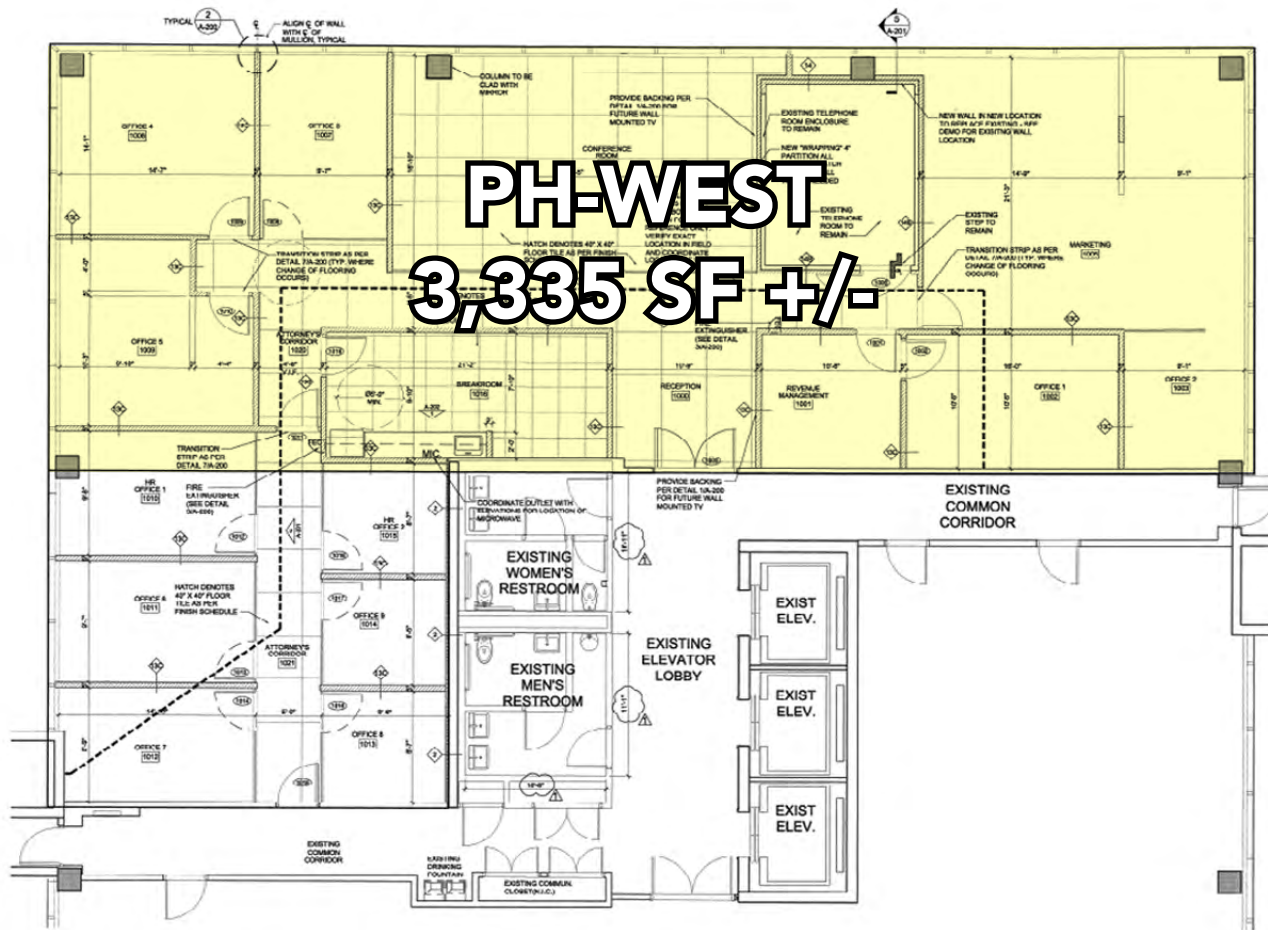
Jenna Cohen
Realtor Associate
(786) 262-8279
jenna@chariff.com

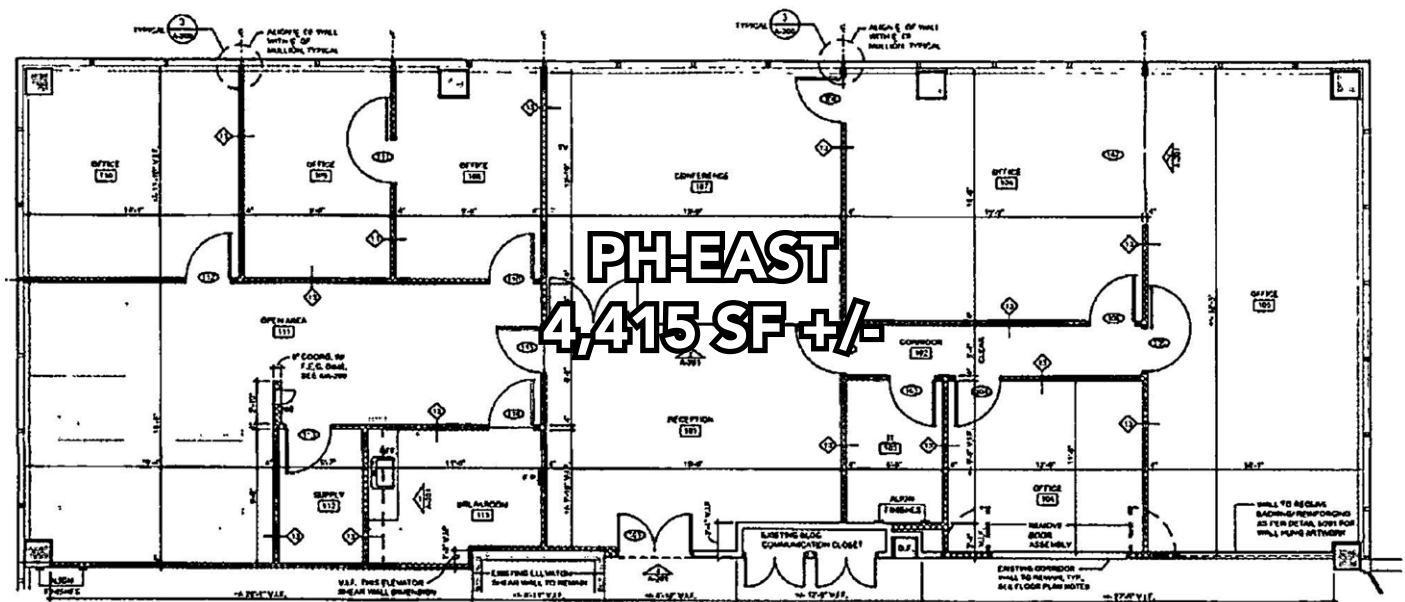
@chariff @chariffrealty

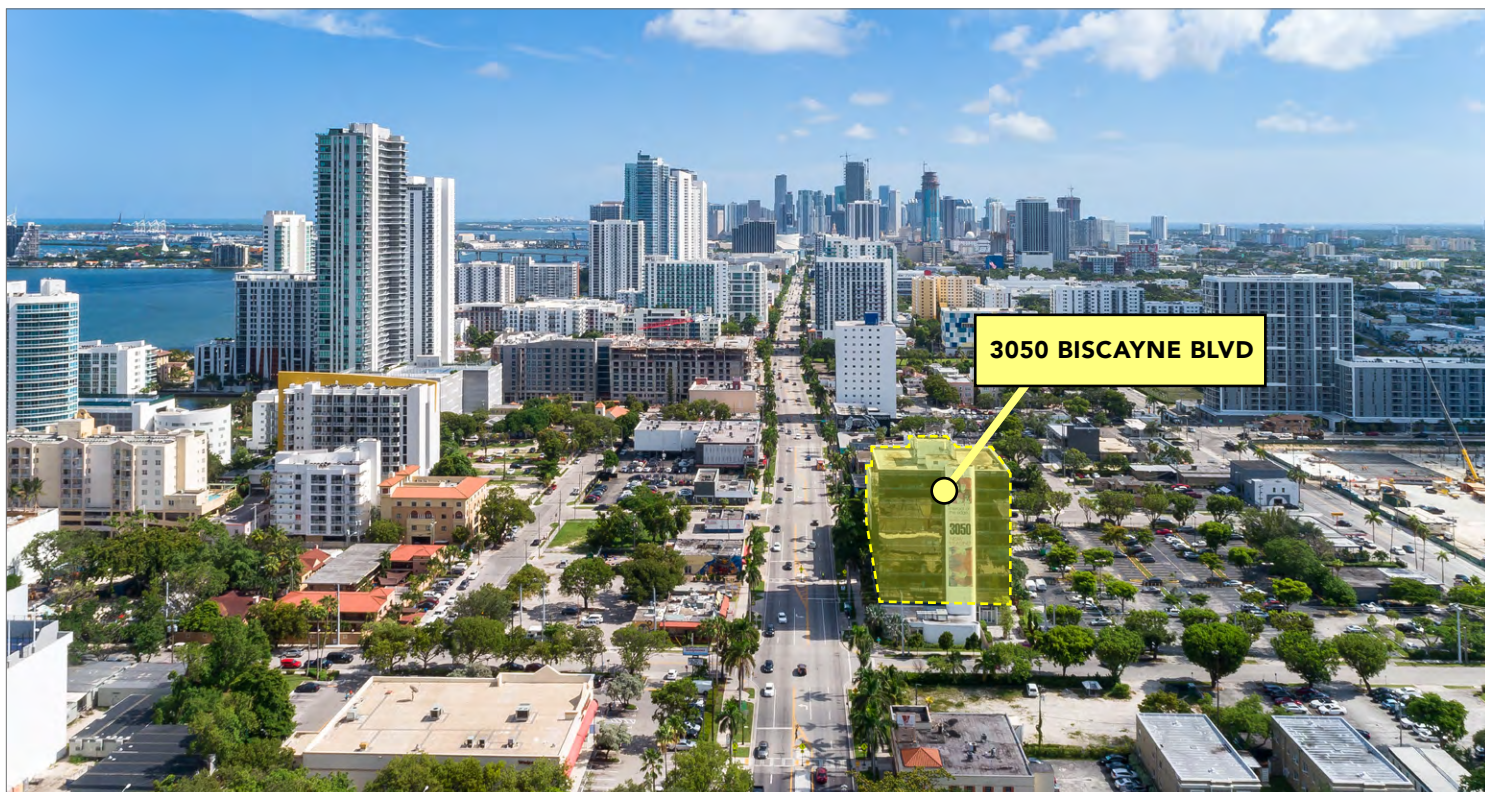
www.chariff.com

All information has been secured from the seller/lessor and the accuracy thereof is not warranted and therefore must be verified by the buyer/lessee prior to purchase/lease. All information is subject to errors, omissions, change, and withdrawal without notice. Any reference to age, market data, and/or square footage must be verified and is not guaranteed. Buyer/lessee bears all risks.









LYLE CHARIFF
Broker/President
lyle@chariff.com

MAURICIO ZAPATA
Broker/Principal
mauricio@chariff.com

JENNA COHEN
(786) 262-8279
jenna@chariff.com

(O) 305-576-7474
(F) 305-576-7494

 @chariff
 @chariff
 @chariffrealty



5801 BISCAYNE BOULEVARD
MIAMI, FLORIDA 33137

www.chariff.com